

YEAR

2007

LINK FAN KAM RD (from KAM TIN RD to CASTLE PEAK RD)

COVERAGE (B) STATION

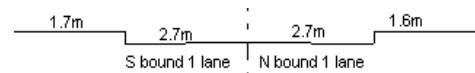
6212

ROAD NETWORK

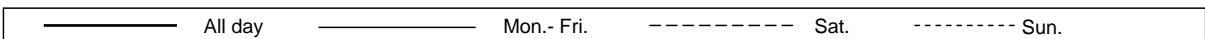
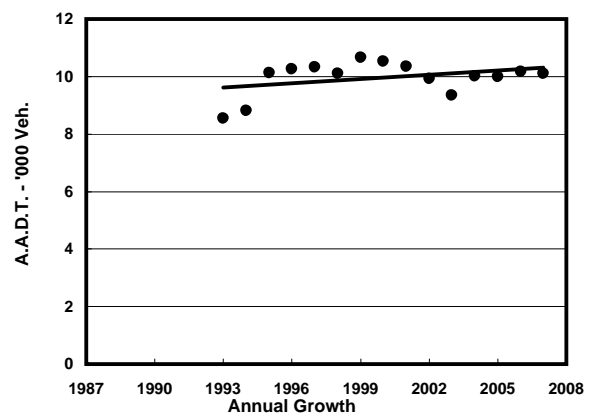
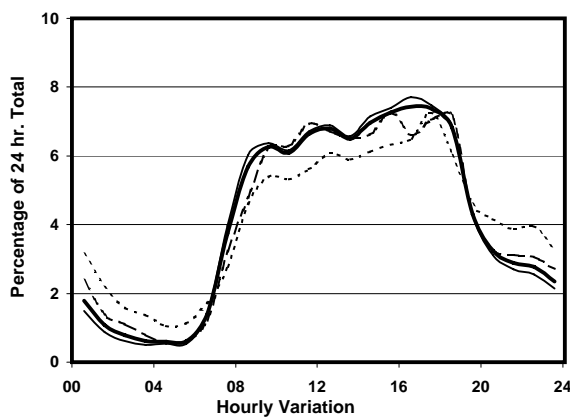
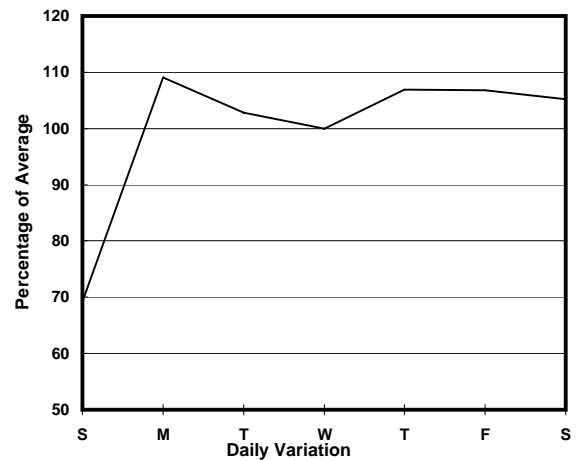
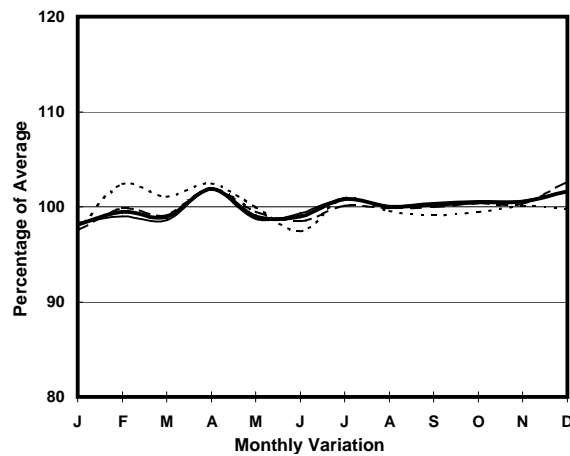
MAJOR

ROAD TYPE

RURAL ROAD



## 1. TRAFFIC FLOW VARIATION AND GROWTH



## 2. TRAFFIC CHARACTERISTICS (BY DIRECTION)

Parameter	All - Day	Mon. - Fri.	Sat.	Sun.
<b>SOUTH BOUND</b>				
A.A.D.T.	5150	5500	5500	3630
R 12 / 24 - %	77.6	79.3	75.5	68
R 16 / 24 - %	90.7	91.9	89.2	84.6
AM Peak Hour	0900-1000	0900-1000	0900-1000	0900-1000
One-way flow at AM peak hour	320	350	340	200
T - % (AM)	-	9.5	-	-
PM Peak Hour	1600-1700	1600-1700	1800-1900	1700-1800
One-way flow at PM peak hour	380	420	400	260
T - % (PM)	-	13.1	-	-
Prop.of commercial vehicles - 16 hr.	-	10	-	-
<b>NORTH BOUND</b>				
A.A.D.T.	4950	5290	5290	3500
R 12 / 24 - %	77.6	79.3	75.5	68
R 16 / 24 - %	90.8	92	89.2	84.6
AM Peak Hour	0900-1000	0900-1000	0900-1000	0900-1000
One-way flow at AM peak hour	310	340	330	190
T - % (AM)	-	2.7	-	-
PM Peak Hour	1600-1700	1600-1700	1800-1900	1700-1800
One-way flow at PM peak hour	370	410	380	250
T - % (PM)	-	12.2	-	-
Prop.of commercial vehicles - 16 hr.	-	10.5	-	-

## 3. OTHER INFORMATION AND COMMENT

**4. Vehicle classification and occupancy - Monday to Friday**

Time		Class of vehicle									
		Motor	Private	Taxi	Private	PLB	Goods veh.		Non	Fr. Bus	
		Cycle	Car		LB		Light	M & H	Fr. Bus	SD	DD
0700-0800	Pro	0.0	28.9	20.8	4.6	10.4	23.1	9.2	1.2	1.4	0.3
	Ocp	0.0	1.3	1.6	2.3	10.9	2.1	1.5	23.0	25.4	39.0
0800-0900	Pro	0.0	42.9	19.4	1.7	5.9	18.5	9.3	0.8	1.3	0.2
	Ocp	0.0	1.5	1.3	7.5	15.6	1.4	1.5	1.0	22.0	38.0
0900-1000	Pro	0.0	46.8	14.9	0.7	4.1	27.1	5.4	0.0	0.8	0.2
	Ocp	0.0	1.2	1.4	1.0	9.7	1.3	1.1	0.0	15.0	0.0
1000-1100	Pro	0.0	37.4	5.7	1.1	5.7	37.4	11.3	0.0	1.4	0.0
	Ocp	0.0	1.4	1.2	1.0	7.2	1.1	1.2	0.0	11.4	0.0
1100-1200	Pro	1.5	36.7	10.3	0.7	3.7	38.2	8.1	0.0	0.7	0.2
	Ocp	1.0	1.4	1.4	4.0	5.8	1.6	1.1	0.0	13.5	20.0
1200-1300	Pro	0.8	36.8	6.1	4.6	3.8	34.5	7.7	4.6	1.0	0.2
	Ocp	1.0	1.4	1.9	6.2	6.4	1.7	1.0	13.2	10.6	14.0
1300-1400	Pro	0.0	36.9	9.5	3.8	4.7	36.9	6.6	0.0	1.7	0.0
	Ocp	0.0	1.6	1.6	3.3	7.8	1.9	1.1	0.0	13.7	0.0
1400-1500	Pro	0.0	40.3	5.8	1.6	4.1	37.9	8.2	0.8	1.0	0.2
	Ocp	0.0	1.5	1.6	1.5	7.2	1.4	1.1	4.0	14.4	19.0
1500-1600	Pro	2.2	38.1	7.9	0.7	2.2	38.1	8.6	0.7	1.4	0.0
	Ocp	1.0	1.5	1.9	3.0	13.3	1.5	1.1	14.0	9.3	0.0
1600-1700 Peak hour	Pro	0.0	42.9	4.6	3.1	3.1	33.7	10.0	1.5	1.0	0.2
	Ocp	0.0	1.6	1.8	4.0	11.8	1.5	1.2	7.0	11.8	21.0
1700-1800	Pro	0.7	41.7	18.0	0.7	5.0	21.6	7.9	2.9	1.3	0.2
	Ocp	1.0	1.5	1.2	2.0	9.4	1.4	1.0	5.3	18.6	22.0
1800-1900	Pro	2.5	60.3	11.6	0.8	5.8	9.9	6.6	0.8	1.7	0.0
	Ocp	1.3	1.4	1.5	1.0	12.1	1.4	1.0	6.0	24.0	0.0
1900-2000	Pro	1.1	50.3	12.8	1.1	7.5	21.4	4.3	0.0	1.6	0.0
	Ocp	1.0	1.5	1.4	1.0	8.4	1.6	1.3	0.0	15.2	0.0
2000-2100	Pro	2.6	59.4	9.0	0.0	5.2	16.8	5.2	0.0	1.6	0.3
	Ocp	1.0	1.5	1.3	0.0	11.3	1.5	1.0	0.0	7.6	14.0
2100-2200	Pro	0.0	43.5	12.9	0.0	9.7	22.6	8.1	0.0	3.2	0.0
	Ocp	0.0	1.5	2.1	0.0	6.8	1.7	1.4	0.0	6.5	0.0
2200-2300	Pro	1.6	62.3	10.9	0.0	6.2	9.3	7.8	0.0	1.6	0.4
	Ocp	1.0	1.4	1.3	0.0	7.5	1.0	1.4	0.0	13.3	14.0
16 hours	Pro	0.8	43.4	11.2	1.6	5.1	27.8	7.8	1.0	1.3	0.1
	Ocp	1.1	1.5	1.5	3.7	9.6	1.5	1.2	9.5	14.6	20.1

**Legend**

- Pro.** Proportion of vehicles in % (Sum may not add up to 100% due to figure rounding)
- Ocp.** Average occupancy of vehicles
- M&H** Medium and Heavy