

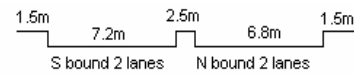
YEAR 2007

COVERAGE (B) STATION 6213

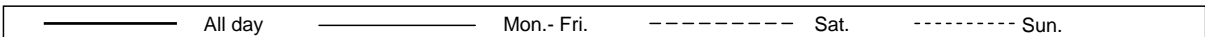
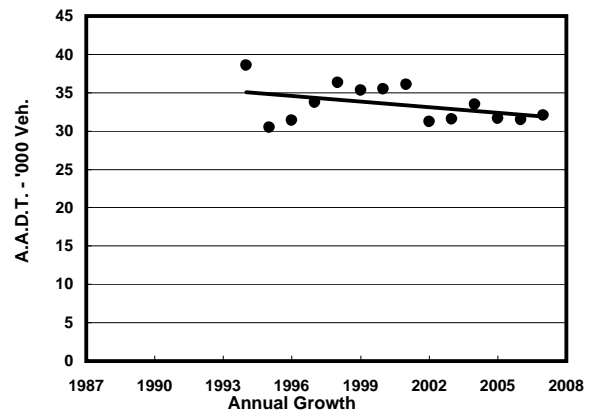
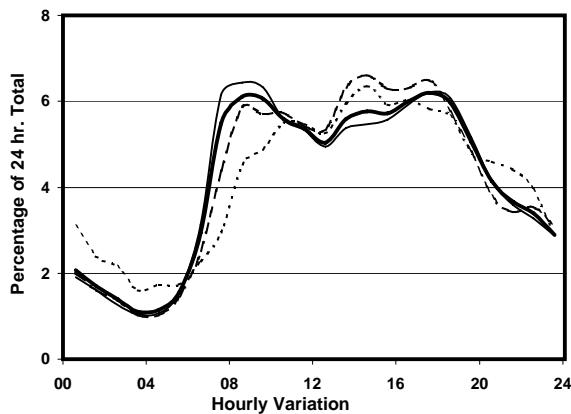
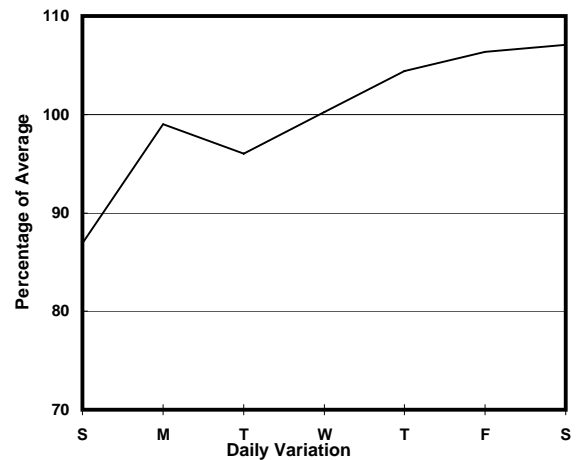
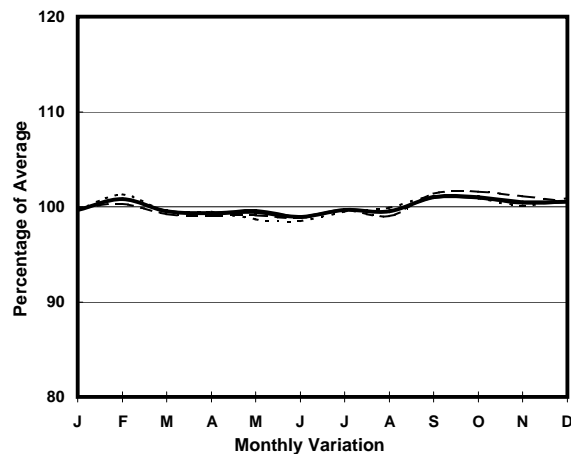
ROAD NETWORK MAJOR

ROAD TYPE RURAL TRUNK ROAD

LINK CASTLE PEAK RD - HUNG SHUI KIU (from TIN HA RD to LAM TEI INT)



1. TRAFFIC FLOW VARIATION AND GROWTH



2. TRAFFIC CHARACTERISTICS (BY DIRECTION)

Parameter	All - Day	Mon. - Fri.	Sat.	Sun.
SOUTH BOUND				
A.A.D.T.	16950	17390	18330	14200
R 12 / 24 - %	73.3	74	73.9	68.5
R 16 / 24 - %	86.5	86.8	86.9	84.1
AM Peak Hour	0800-0900	0700-0800	0800-0900	0900-1000
One-way flow at AM peak hour	1190	1310	1300	800
T - % (AM)	-	29.5	-	-
PM Peak Hour	1700-1800	1700-1800	1700-1800	1600-1700
One-way flow at PM peak hour	1050	1090	1160	860
T - % (PM)	-	23.2	-	-
Prop.of commercial vehicles - 16 hr.	-	22.5	-	-
NORTH BOUND				
A.A.D.T.	15080	15250	16200	13830
R 12 / 24 - %	63.9	64.2	66.2	60.1
R 16 / 24 - %	83.7	84.2	84.8	80.1
AM Peak Hour	0900-1000	0900-1000	0900-1000	0900-1000
One-way flow at AM peak hour	820	870	840	570
T - % (AM)	-	26.6	-	-
PM Peak Hour	1800-1900	1800-1900	1700-1800	1700-1800
One-way flow at PM peak hour	940	970	1080	850
T - % (PM)	-	12.5	-	-
Prop.of commercial vehicles - 16 hr.	-	21.3	-	-

3. OTHER INFORMATION AND COMMENT

4. Vehicle classification and occupancy - Monday to Friday

Time		Class of vehicle									
		Motor	Private	Taxi	Private	PLB	Goods veh.		Non	Fr. Bus	
		Cycle	Car		LB		Light	M & H	Fr. Bus	SD	DD
0700-0800	Pro	1.3	24.4	15.3	1.6	4.2	23.4	18.4	9.3	0.4	1.8
	Ocp	1.2	1.5	1.8	11.3	10.4	1.5	1.1	8.8	11.8	27.4
0800-0900	Pro	1.9	43.2	9.6	2.3	3.4	23.0	12.3	2.6	0.3	1.3
	Ocp	1.1	1.4	1.4	4.9	10.5	1.5	1.2	9.2	7.2	26.0
0900-1000	Pro	1.1	25.4	15.7	2.0	2.9	27.4	21.0	3.1	0.3	1.2
	Ocp	1.2	1.4	1.3	3.6	8.5	1.5	1.1	1.2	5.2	13.5
1000-1100	Pro	1.4	20.6	14.2	2.0	5.6	24.5	28.2	2.0	0.3	1.3
	Ocp	1.2	1.6	1.5	3.7	6.7	1.5	1.3	7.3	5.0	16.8
1100-1200	Pro	2.8	30.2	11.3	1.1	4.8	25.9	21.1	1.1	0.3	1.3
	Ocp	1.1	1.6	1.6	2.3	8.4	1.6	1.2	1.0	9.5	13.4
1200-1300	Pro	1.4	26.6	10.9	2.0	4.0	26.6	24.1	2.9	0.3	1.2
	Ocp	1.2	1.7	1.5	2.7	9.0	1.6	1.2	10.0	9.3	13.3
1300-1400	Pro	2.0	33.7	11.4	2.0	2.5	21.7	22.6	2.5	0.3	1.3
	Ocp	1.1	1.7	1.8	3.3	13.4	1.5	1.2	3.0	9.0	12.6
1400-1500	Pro	1.5	32.8	10.5	1.2	3.4	20.3	27.6	1.5	0.2	1.0
	Ocp	1.2	1.4	1.6	2.4	9.1	1.5	1.2	5.5	8.3	12.2
1500-1600	Pro	1.2	29.3	15.7	1.2	4.4	21.8	23.2	1.7	0.3	1.3
	Ocp	1.0	1.6	1.6	4.0	8.5	1.6	1.2	6.7	10.8	12.6
1600-1700	Pro	1.3	30.5	14.6	1.0	3.3	20.9	21.9	4.8	0.3	1.4
	Ocp	1.0	1.5	1.6	4.8	10.8	1.7	1.2	3.6	11.5	13.5
1700-1800	Pro	1.4	30.6	12.4	1.7	4.1	24.6	19.1	4.8	0.2	1.1
	Ocp	1.2	1.5	1.6	2.7	9.4	1.6	1.2	5.6	12.3	19.8
1800-1900	Pro	2.1	47.7	10.8	2.1	3.7	20.9	7.3	3.9	0.2	1.3
	Ocp	1.1	1.7	1.7	3.4	13.4	1.6	1.2	4.5	11.5	25.2
1900-2000	Pro	1.3	51.3	11.3	1.3	4.0	15.8	6.2	7.2	0.3	1.2
	Ocp	1.0	1.5	1.4	1.2	11.7	1.4	1.0	1.3	8.8	21.6
2000-2100	Pro	2.0	48.7	19.8	0.3	6.6	14.0	2.6	4.6	0.3	1.2
	Ocp	1.0	1.6	1.5	2.0	9.3	1.5	1.2	3.6	7.8	17.1
2100-2200	Pro	5.1	42.9	24.7	1.5	4.7	14.9	1.1	3.3	0.4	1.5
	Ocp	1.1	1.7	1.7	2.3	8.8	1.6	1.0	1.6	5.0	18.5
2200-2300	Pro	2.5	53.7	25.6	1.1	4.6	6.4	1.8	2.5	0.4	1.4
	Ocp	1.1	1.8	1.7	2.3	9.5	1.3	1.0	5.4	6.2	15.6
16 hours	Pro	1.8	35.4	14.1	1.5	4.1	21.2	16.6	3.6	0.3	1.3
	Ocp	1.1	1.6	1.6	3.8	9.7	1.6	1.2	5.0	8.6	18.0

Legend

- Pro.** Proportion of vehicles in % (Sum may not add up to 100% due to figure rounding)
- Ocp.** Average occupancy of vehicles
- M&H** Medium and Heavy