

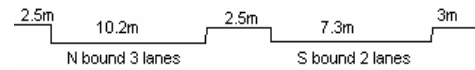
YEAR 2007

COVER AGE (B) STATION 6214

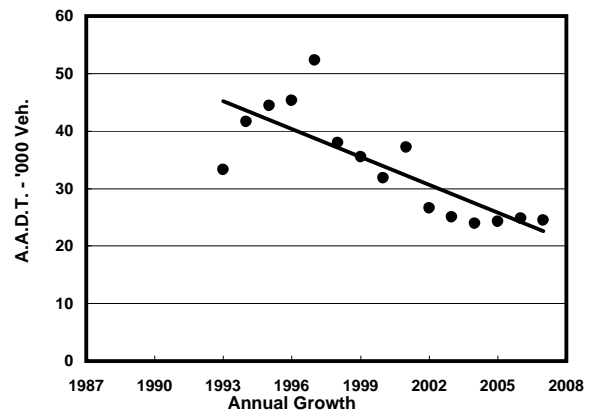
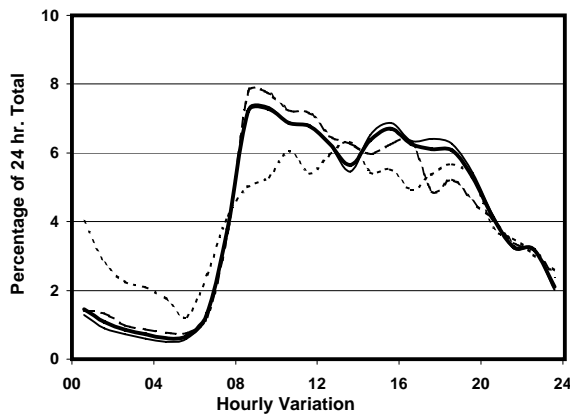
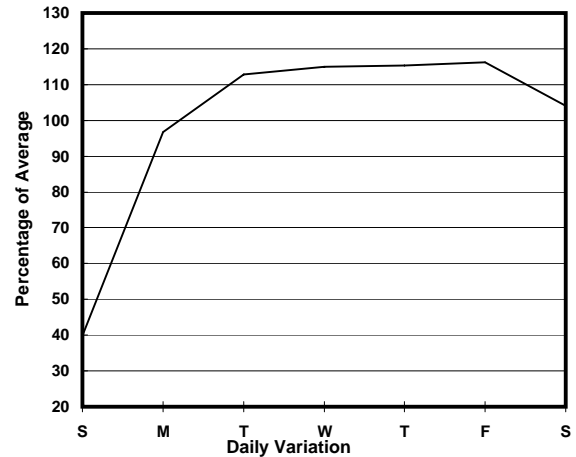
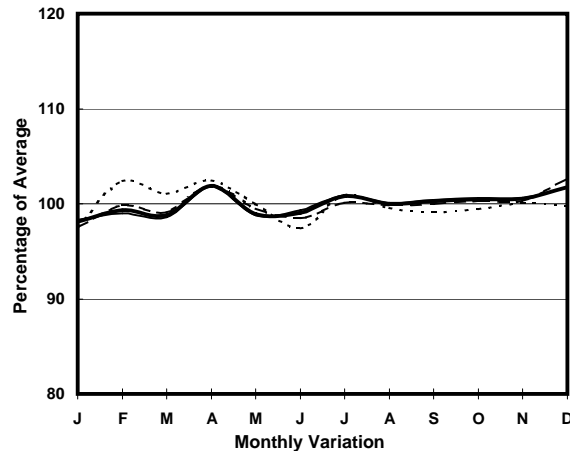
ROAD NETWORK MAJOR

ROAD TYPE LOCAL DISTRIBUTOR

LINK CONTAINER PORT RD S (from N/O PMH INT to S/O PMH INT)



1. TRAFFIC FLOW VARIATION AND GROWTH



— All day — Mon.- Fri. - - - - Sat. - - - - - Sun.

2. TRAFFIC CHARACTERISTICS (BY DIRECTION)

Parameter	All - Day	Mon. - Fri.	Sat.	Sun.
SOUTH BOUND				
A.A.D.T.	11280	13130	11530	4490
R 12 / 24 - %	75.7	76.5	76.1	63.3
R 16 / 24 - %	91.7	92.8	89.9	80.9
AM Peak Hour	0800-0900	0800-0900	0900-1000	0800-0900
One-way flow at AM peak hour	770	900	890	230
T - % (AM)	-	44.1	-	-
PM Peak Hour	1800-1900	1700-1800	1600-1700	1700-1800
One-way flow at PM peak hour	760	930	700	310
T - % (PM)	-	54.7	-	-
Prop.of commercial vehicles - 16 hr.	-	54.5	-	-
NORTH BOUND				
A.A.D.T.	13180	15000	14750	5590
R 12 / 24 - %	75	75.9	74.2	66.7
R 16 / 24 - %	90.7	91.5	90.5	80.8
AM Peak Hour	0900-1000	0900-1000	0800-0900	0900-1000
One-way flow at AM peak hour	1030	1190	1180	380
T - % (AM)	-	56	-	-
PM Peak Hour	1600-1700	1600-1700	1600-1700	1600-1700
One-way flow at PM peak hour	820	920	960	320
T - % (PM)	-	60.9	-	-
Prop.of commercial vehicles - 16 hr.	-	59.7	-	-

3. OTHER INFORMATION AND COMMENT

4. Vehicle classification and occupancy - Monday to Friday

Time		Class of vehicle									
		Motor	Private	Taxi	Private	PLB	Goods veh.		Non	Fr. Bus	
		Cycle	Car		LB		Light	M & H	Fr. Bus	SD	DD
0700-0800	Pro	1.6	4.2	17.4	0.3	1.8	13.7	57.3	3.7	0.0	0.0
	Ocp	1.0	1.1	1.7	1.0	11.1	1.4	1.1	16.1	0.0	0.0
0800-0900	Pro	2.1	9.9	24.8	0.0	0.5	17.6	43.5	1.6	0.0	0.0
	Ocp	1.0	1.2	1.8	0.0	16.0	1.6	1.2	25.0	0.0	0.0
0900-1000 Peak hour	Pro	1.4	10.3	9.1	0.0	0.4	24.2	53.5	1.0	0.0	0.0
	Ocp	1.0	1.1	1.8	0.0	5.5	1.4	1.2	1.0	0.0	0.0
1000-1100	Pro	1.9	5.9	5.2	0.2	0.5	27.6	58.3	0.5	0.0	0.0
	Ocp	1.0	1.4	1.7	1.0	8.0	1.6	1.2	2.5	0.0	0.0
1100-1200	Pro	1.3	5.2	4.3	0.2	0.9	27.3	60.6	0.2	0.0	0.0
	Ocp	1.0	1.2	1.7	1.0	6.8	1.4	1.2	1.0	0.0	0.0
1200-1300	Pro	2.9	11.1	5.1	0.2	0.7	22.9	56.6	0.5	0.0	0.0
	Ocp	1.1	1.5	1.8	1.0	3.3	1.5	1.2	1.0	0.0	0.0
1300-1400	Pro	1.4	7.0	7.0	0.5	0.7	25.8	57.5	0.0	0.0	0.0
	Ocp	1.0	1.4	2.1	5.0	7.0	1.5	1.3	0.0	0.0	0.0
1400-1500	Pro	1.2	8.4	4.0	0.8	0.8	26.5	58.0	0.2	0.0	0.0
	Ocp	1.0	1.4	2.3	3.8	6.3	1.4	1.2	1.0	0.0	0.0
1500-1600	Pro	1.5	4.6	3.8	0.6	1.1	29.1	58.7	0.6	0.0	0.0
	Ocp	1.0	1.3	1.6	3.7	6.0	1.5	1.2	10.7	0.0	0.0
1600-1700	Pro	1.0	5.9	4.7	0.5	0.8	29.5	57.4	0.3	0.0	0.0
	Ocp	1.0	1.6	2.0	2.0	4.7	1.6	1.2	1.0	0.0	0.0
1700-1800	Pro	1.0	8.9	8.1	0.3	0.8	24.8	53.7	2.5	0.0	0.0
	Ocp	1.0	1.4	2.1	1.0	8.3	1.4	1.0	23.2	0.0	0.0
1800-1900	Pro	3.4	14.2	11.4	0.3	0.8	17.3	50.9	1.8	0.0	0.0
	Ocp	1.0	1.3	1.9	1.0	16.3	1.5	1.1	14.9	0.0	0.0
1900-2000	Pro	3.9	9.9	16.4	0.5	0.5	10.4	57.8	0.5	0.0	0.0
	Ocp	1.1	1.2	2.0	1.5	16.0	1.5	1.1	38.5	0.0	0.0
2000-2100	Pro	0.0	9.2	21.4	0.0	1.0	7.5	60.7	0.3	0.0	0.0
	Ocp	0.0	1.4	1.5	0.0	4.3	1.3	1.0	1.0	0.0	0.0
2100-2200	Pro	0.9	8.1	15.2	0.5	0.9	5.2	69.2	0.0	0.0	0.0
	Ocp	1.0	1.5	1.7	1.0	9.5	1.2	1.1	0.0	0.0	0.0
2200-2300	Pro	2.6	7.7	22.4	0.6	0.0	4.5	60.9	1.3	0.0	0.0
	Ocp	1.0	1.6	2.0	3.0	0.0	1.1	1.0	24.0	0.0	0.0
16 hours	Pro	1.8	8.2	10.5	0.3	0.8	21.2	56.3	0.9	0.0	0.0
	Ocp	1.0	1.3	1.8	2.5	8.5	1.5	1.2	16.0	0.0	0.0

Legend

- Pro.** Proportion of vehicles in % (Sum may not add up to 100% due to figure rounding)
- Ocp.** Average occupancy of vehicles
- M&H** Medium and Heavy