

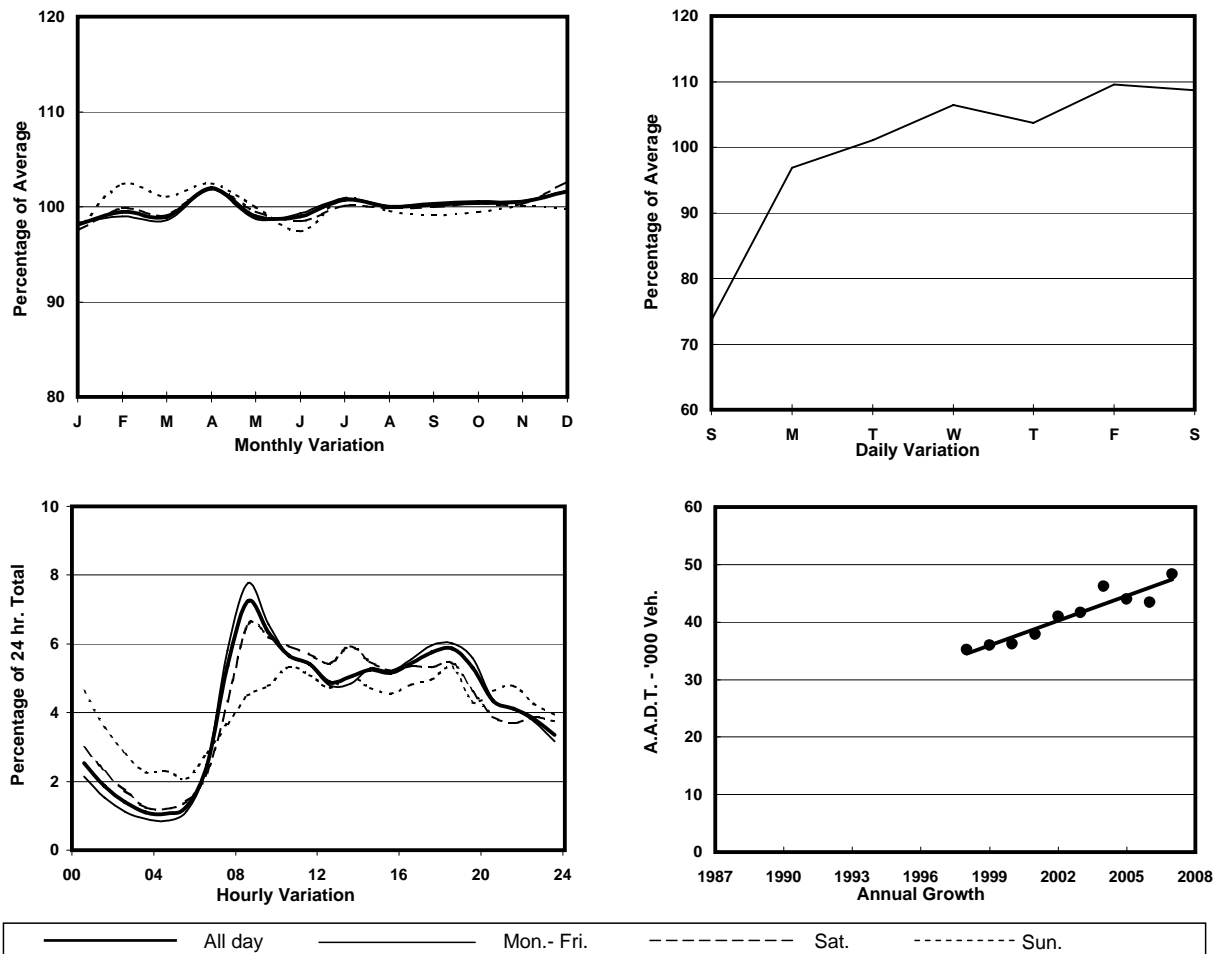
YEAR 2007

LINK KWAI TSING RD & TSING YI S BRIDGE (from TSING YI RD to KWAI TAI RD INT)

COVERAGE (B) STATION 6219
ROAD NETWORK MAJOR
ROAD TYPE DISTRICT DISTRIBUTOR

8.8m 10m
E bound 2 lanes vW bound 3 lanes

1. TRAFFIC FLOW VARIATION AND GROWTH



2. TRAFFIC CHARACTERISTICS (BY DIRECTION)

Parameter	All - Day	Mon. - Fri.	Sat.	Sun.
EAST BOUND				
A.A.D.T.	24860	26010	27470	19000
R 12 / 24 - %	68.4	69.7	68	59.6
R 16 / 24 - %	85.3	86.8	83.6	76.8
AM Peak Hour	0800-0900	0800-0900	0800-0900	0900-1000
One-way flow at AM peak hour	1880	2090	1920	980
T - % (AM)	-	27.8	-	-
PM Peak Hour	1800-1900	1700-1800	1800-1900	1800-1900
One-way flow at PM peak hour	1430	1550	1500	1020
T - % (PM)	-	35.5	-	-
Prop.of commercial vehicles - 16 hr.	-	30.7	-	-
WEST BOUND				
A.A.D.T.	23480	24740	25790	17190
R 12 / 24 - %	66.4	68	66	55.4
R 16 / 24 - %	84.7	86.5	82.5	74.3
AM Peak Hour	0800-0900	0800-0900	0800-0900	0900-1000
One-way flow at AM peak hour	1630	1850	1580	750
T - % (AM)	-	30.6	-	-
PM Peak Hour	1800-1900	1800-1900	1800-1900	1800-1900
One-way flow at PM peak hour	1400	1520	1410	910
T - % (PM)	-	32.7	-	-
Prop.of commercial vehicles - 16 hr.	-	35	-	-

3. OTHER INFORMATION AND COMMENT

4. Vehicle classification and occupancy - Monday to Friday

Time		Class of vehicle									
		Motor	Private	Taxi	Private	PLB	Goods veh.		Non	Fr. Bus	
		Cycle	Car		LB		Light	M & H	Fr. Bus	SD	DD
0700-0800	Pro	4.8	11.9	24.1	2.2	8.7	11.4	19.7	11.7	0.0	5.5
	Ocp	1.1	1.6	2.0	9.3	13.4	1.6	1.0	14.8	0.0	49.3
0800-0900	Pro	4.0	22.4	24.6	0.6	5.8	13.5	20.0	6.1	0.0	2.9
	Ocp	1.1	1.4	1.8	2.5	13.7	1.5	1.2	12.6	0.0	54.7
0900-1000	Pro	2.9	18.4	18.7	0.9	5.4	19.1	27.5	3.8	0.0	3.4
	Ocp	1.1	1.3	1.7	2.1	13.5	1.5	1.2	8.9	0.0	33.7
1000-1100	Pro	2.7	13.0	15.9	0.4	6.0	23.9	33.9	0.9	0.0	3.4
	Ocp	1.0	1.4	1.7	5.0	12.1	1.5	1.1	6.5	0.0	18.5
1100-1200	Pro	1.4	16.6	11.6	1.5	5.4	24.0	34.7	1.2	0.1	3.5
	Ocp	1.1	1.5	1.7	3.0	10.3	1.4	1.2	4.9	1.0	21.3
1200-1300	Pro	3.1	16.4	12.8	0.9	6.1	23.7	31.7	2.0	0.0	3.4
	Ocp	1.0	1.5	1.6	2.6	11.7	1.6	1.3	5.0	0.0	20.2
1300-1400	Pro	2.3	15.9	11.2	0.8	6.2	23.8	34.5	1.5	0.0	3.8
	Ocp	1.1	1.7	1.9	1.8	10.7	1.6	1.2	6.3	0.0	25.9
1400-1500	Pro	2.0	17.9	12.0	0.9	5.4	26.2	30.7	1.5	0.0	3.5
	Ocp	1.1	1.7	1.8	2.0	11.8	1.5	1.2	4.3	0.0	22.5
1500-1600	Pro	1.5	16.3	10.0	1.7	4.8	26.8	32.8	2.3	0.0	3.6
	Ocp	1.1	1.5	1.9	3.1	11.3	1.6	1.2	10.3	0.0	24.3
1600-1700	Pro	2.0	18.4	13.7	2.0	6.1	21.3	28.1	4.5	0.1	3.9
	Ocp	1.0	1.6	1.6	3.4	13.0	1.5	1.2	4.8	1.0	34.0
1700-1800	Pro	3.2	18.7	12.2	1.1	7.1	21.5	25.4	6.6	0.0	4.1
	Ocp	1.0	1.5	1.7	4.5	14.3	1.7	1.1	10.9	0.0	41.3
1800-1900	Pro	4.1	24.7	15.0	0.7	6.9	16.8	22.5	5.1	0.1	4.2
	Ocp	1.0	1.5	1.8	4.0	16.2	1.6	1.1	11.0	1.0	49.8
1900-2000	Pro	3.2	34.1	18.1	0.8	7.0	14.7	14.9	4.0	0.0	3.2
	Ocp	1.1	1.4	1.9	2.3	12.6	1.7	1.1	10.1	0.0	38.1
2000-2100	Pro	2.8	31.6	24.2	0.2	9.3	7.7	16.2	4.0	0.0	4.1
	Ocp	1.1	1.6	1.8	1.0	11.2	1.7	1.1	8.2	0.0	28.2
2100-2200	Pro	4.2	26.9	25.7	0.6	11.3	6.8	15.3	4.0	0.1	5.0
	Ocp	1.0	1.8	1.8	1.3	11.9	1.6	1.1	7.6	1.0	27.3
2200-2300	Pro	3.4	27.4	34.6	0.2	8.8	6.1	11.7	2.7	0.0	5.3
	Ocp	1.1	2.0	1.8	2.0	11.0	1.5	1.2	7.7	0.0	29.4
16 hours	Pro	3.0	20.7	17.5	1.0	6.7	18.2	25.0	4.0	0.1	3.8
	Ocp	1.1	1.5	1.8	3.8	12.6	1.6	1.2	10.2	1.0	33.9

Legend

- Pro.** Proportion of vehicles in % (Sum may not add up to 100% due to figure rounding)
- Ocp.** Average occupancy of vehicles
- M&H** Medium and Heavy