

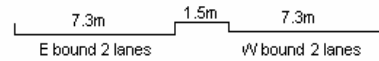
YEAR 2007

COVERAGE (B) STATION 6221

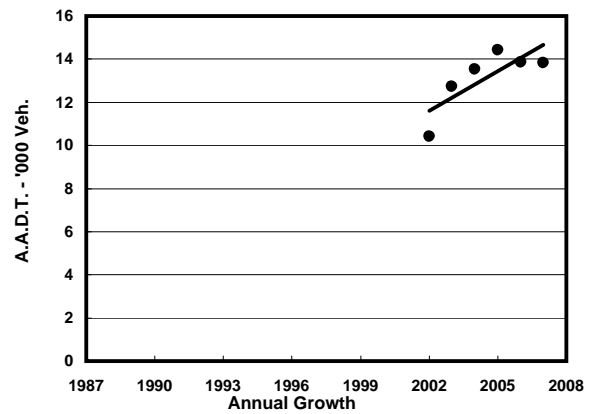
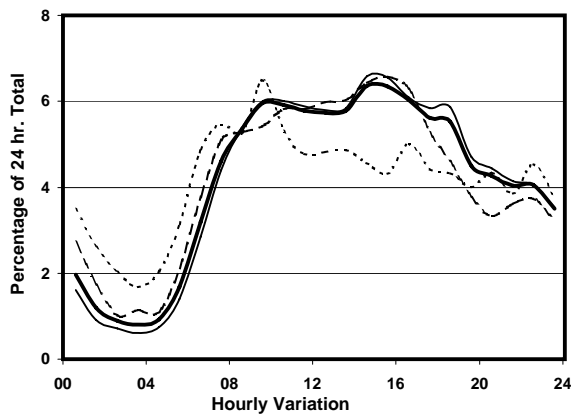
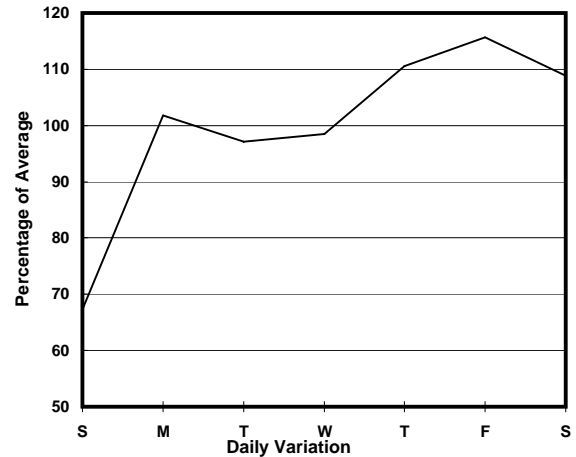
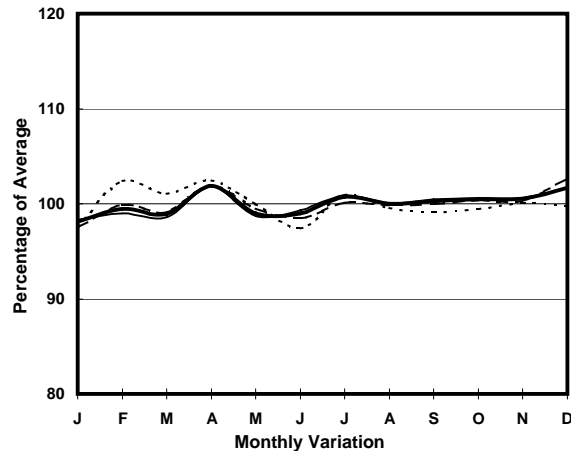
ROAD NETWORK MAJOR

ROAD TYPE DISTRICT DISTRIBUTOR

LINK TSING YI N COASTAL RD FO (from TSING TSUEN RD to TAM KON SHAN INT W END)



### 1. TRAFFIC FLOW VARIATION AND GROWTH



Legend: — All day, - - - Mon.- Fri., . . . Sat., - . . Sun.

### 2. TRAFFIC CHARACTERISTICS (BY DIRECTION)

| Parameter                            | All - Day | Mon. - Fri. | Sat.      | Sun.      |
|--------------------------------------|-----------|-------------|-----------|-----------|
| <b>EAST BOUND</b>                    |           |             |           |           |
| A.A.D.T.                             | 5700      | 6120        | 6260      | 3730      |
| R 12 / 24 - %                        | 68.8      | 70.2        | 68.2      | 58.1      |
| R 16 / 24 - %                        | 85.5      | 87.5        | 82.3      | 74.9      |
| AM Peak Hour                         | 0900-1000 | 0900-1000   | 0800-0900 | 0900-1000 |
| One-way flow at AM peak hour         | 300       | 320         | 290       | 230       |
| T - % (AM)                           | -         | 32.5        | -         | -         |
| PM Peak Hour                         | 1600-1700 | 1800-1900   | 1600-1700 | 1600-1700 |
| One-way flow at PM peak hour         | 380       | 410         | 450       | 210       |
| T - % (PM)                           | -         | 24.1        | -         | -         |
| Prop.of commercial vehicles - 16 hr. | -         | 31.6        | -         | -         |
| <b>WEST BOUND</b>                    |           |             |           |           |
| A.A.D.T.                             | 8120      | 8610        | 9040      | 5750      |
| R 12 / 24 - %                        | 69.2      | 70.3        | 69        | 60.6      |
| R 16 / 24 - %                        | 86.1      | 87.7        | 83.7      | 77.4      |
| AM Peak Hour                         | 0900-1000 | 0900-1000   | 0900-1000 | 0900-1000 |
| One-way flow at AM peak hour         | 530       | 560         | 540       | 390       |
| T - % (AM)                           | -         | 31          | -         | -         |
| PM Peak Hour                         | 1600-1700 | 1600-1700   | 1600-1700 | 1600-1700 |
| One-way flow at PM peak hour         | 460       | 490         | 510       | 270       |
| T - % (PM)                           | -         | 33.8        | -         | -         |
| Prop.of commercial vehicles - 16 hr. | -         | 31.2        | -         | -         |

### 3. OTHER INFORMATION AND COMMENT

**4. Vehicle classification and occupancy - Monday to Friday**

| Time                   |     | Class of vehicle |         |      |         |     |            |       |         |         |      |
|------------------------|-----|------------------|---------|------|---------|-----|------------|-------|---------|---------|------|
|                        |     | Motor            | Private | Taxi | Private | PLB | Goods veh. |       | Non     | Fr. Bus |      |
|                        |     | Cycle            | Car     |      | LB      |     | Light      | M & H | Fr. Bus | SD      | DD   |
| 0700-0800              | Pro | 3.9              | 31.2    | 15.0 | 0.0     | 0.0 | 24.1       | 12.4  | 9.8     | 0.0     | 3.7  |
|                        | Ocp | 1.0              | 1.9     | 1.3  | 0.0     | 0.0 | 1.8        | 1.2   | 15.5    | 0.0     | 49.7 |
| 0800-0900              | Pro | 2.8              | 33.4    | 10.8 | 1.4     | 0.0 | 20.7       | 21.6  | 6.6     | 0.0     | 2.6  |
|                        | Ocp | 1.0              | 1.4     | 2.2  | 1.7     | 0.0 | 1.9        | 1.5   | 28.2    | 0.0     | 49.0 |
| 0900-1000              | Pro | 1.0              | 33.4    | 8.4  | 0.5     | 0.0 | 25.1       | 23.6  | 4.9     | 0.2     | 2.9  |
|                        | Ocp | 1.0              | 1.3     | 2.5  | 1.0     | 0.0 | 1.4        | 1.3   | 22.7    | 1.0     | 31.8 |
| 1000-1100              | Pro | 0.5              | 22.7    | 8.4  | 0.0     | 0.0 | 34.6       | 28.6  | 2.5     | 0.1     | 2.6  |
|                        | Ocp | 1.0              | 1.3     | 2.3  | 0.0     | 0.0 | 1.5        | 1.3   | 29.2    | 1.0     | 20.9 |
| 1100-1200              | Pro | 0.6              | 22.6    | 8.3  | 1.7     | 0.0 | 35.8       | 24.2  | 3.9     | 0.0     | 3.0  |
|                        | Ocp | 1.0              | 1.9     | 1.9  | 2.3     | 0.0 | 1.7        | 1.5   | 9.7     | 0.0     | 17.4 |
| 1200-1300              | Pro | 1.0              | 26.1    | 12.6 | 0.5     | 0.0 | 31.7       | 21.6  | 4.0     | 0.0     | 2.5  |
|                        | Ocp | 1.0              | 1.6     | 2.0  | 2.0     | 0.0 | 1.4        | 1.3   | 13.6    | 0.0     | 18.8 |
| 1300-1400              | Pro | 0.5              | 28.3    | 9.1  | 0.5     | 0.0 | 28.8       | 26.7  | 3.2     | 0.0     | 2.9  |
|                        | Ocp | 1.0              | 1.5     | 1.7  | 1.0     | 0.0 | 1.7        | 1.4   | 19.2    | 0.0     | 19.9 |
| 1400-1500<br>Peak hour | Pro | 2.4              | 22.4    | 7.5  | 0.0     | 0.0 | 36.1       | 26.3  | 3.1     | 0.0     | 2.3  |
|                        | Ocp | 1.0              | 1.6     | 2.0  | 0.0     | 0.0 | 1.6        | 1.5   | 20.9    | 0.0     | 21.7 |
| 1500-1600              | Pro | 0.0              | 24.9    | 9.2  | 0.5     | 0.0 | 33.1       | 22.2  | 7.0     | 0.0     | 3.0  |
|                        | Ocp | 0.0              | 1.6     | 1.5  | 2.0     | 0.0 | 1.6        | 1.2   | 10.4    | 0.0     | 20.9 |
| 1600-1700              | Pro | 1.0              | 22.9    | 12.7 | 0.5     | 0.0 | 25.5       | 30.1  | 4.6     | 0.0     | 2.7  |
|                        | Ocp | 1.0              | 1.6     | 1.6  | 2.0     | 0.0 | 1.8        | 1.4   | 18.9    | 0.0     | 23.5 |
| 1700-1800              | Pro | 1.5              | 28.1    | 13.0 | 0.5     | 0.0 | 23.6       | 26.6  | 4.0     | 0.0     | 2.8  |
|                        | Ocp | 1.0              | 1.7     | 1.8  | 3.0     | 0.0 | 1.7        | 1.4   | 30.4    | 0.0     | 32.9 |
| 1800-1900              | Pro | 1.0              | 35.9    | 13.1 | 0.0     | 0.0 | 24.3       | 17.2  | 5.6     | 0.0     | 2.9  |
|                        | Ocp | 1.0              | 1.8     | 2.0  | 0.0     | 0.0 | 1.7        | 1.4   | 29.1    | 0.0     | 46.5 |
| 1900-2000              | Pro | 0.6              | 35.5    | 14.8 | 0.0     | 0.0 | 17.2       | 24.3  | 4.7     | 0.0     | 3.0  |
|                        | Ocp | 2.0              | 1.7     | 1.6  | 0.0     | 0.0 | 1.7        | 1.6   | 13.6    | 0.0     | 41.1 |
| 2000-2100              | Pro | 2.3              | 32.3    | 15.8 | 0.6     | 0.0 | 16.4       | 22.3  | 6.5     | 0.1     | 3.7  |
|                        | Ocp | 1.3              | 1.9     | 2.1  | 2.0     | 0.0 | 1.5        | 1.5   | 12.0    | 1.0     | 31.9 |
| 2100-2200              | Pro | 1.6              | 43.4    | 13.9 | 0.0     | 0.0 | 8.2        | 20.5  | 8.2     | 0.0     | 4.3  |
|                        | Ocp | 1.0              | 1.7     | 3.1  | 0.0     | 0.0 | 1.5        | 1.2   | 24.0    | 0.0     | 32.8 |
| 2200-2300              | Pro | 3.6              | 37.2    | 16.8 | 0.0     | 0.0 | 13.1       | 20.4  | 5.1     | 0.0     | 3.8  |
|                        | Ocp | 1.0              | 1.5     | 2.0  | 0.0     | 0.0 | 2.2        | 1.4   | 19.9    | 0.0     | 27.6 |
| 16 hours               | Pro | 1.5              | 29.4    | 11.5 | 0.4     | 0.0 | 25.8       | 23.4  | 5.0     | 0.1     | 3.0  |
|                        | Ocp | 1.0              | 1.6     | 2.0  | 1.9     | 0.0 | 1.6        | 1.4   | 19.7    | 1.0     | 30.5 |

**Legend**

**Pro.** Proportion of vehicles in % (Sum may not add up to 100% due to figure rounding)  
**Ocp.** Average occupancy of vehicles  
**M&H** Medium and Heavy