

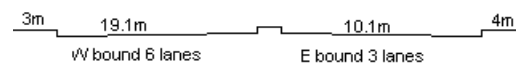
YEAR 2008

CORE STATION 1002

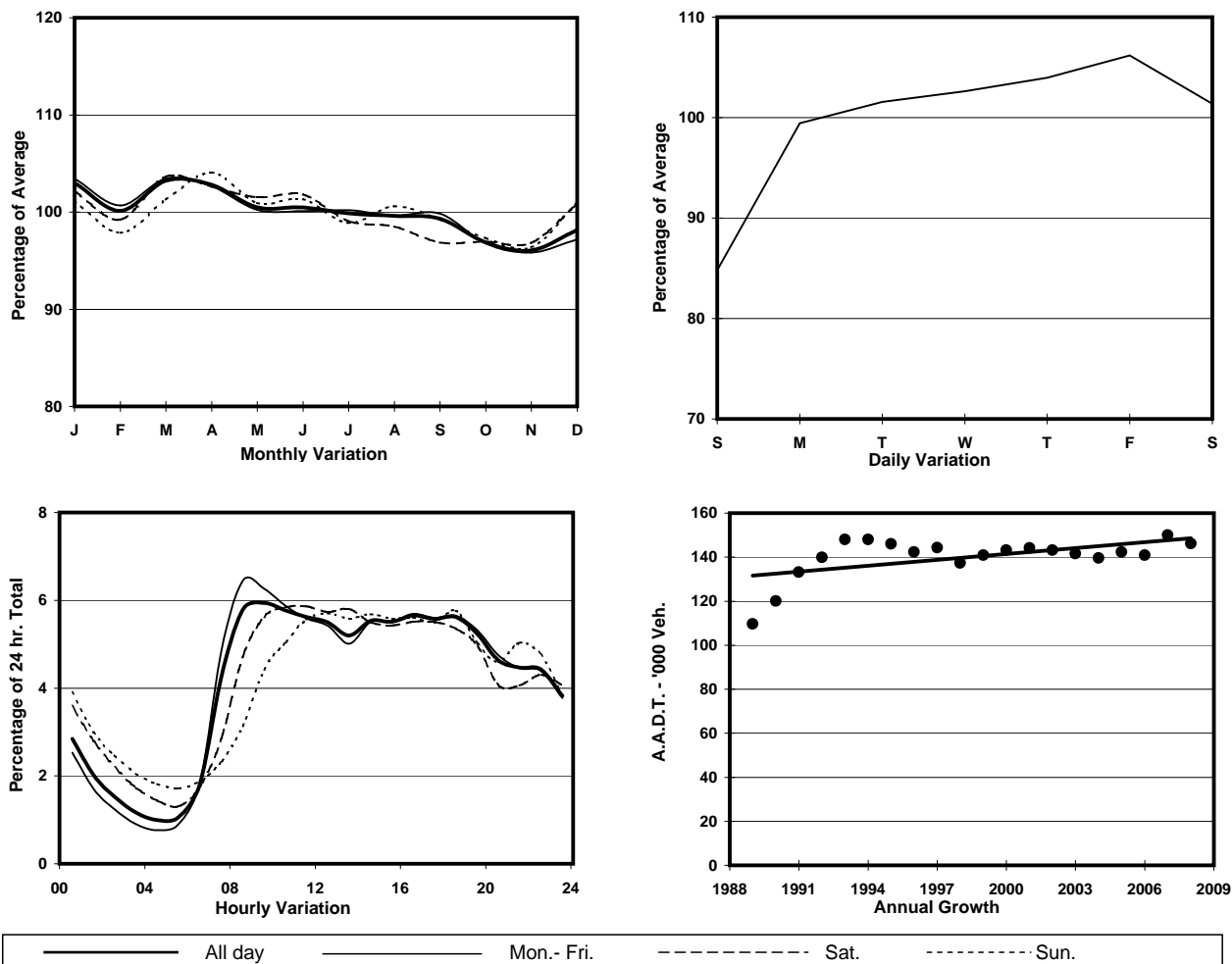
ROAD NETWORK MAJOR

ROAD TYPE URBAN TRUNK ROAD

LINK VICTORIA PARK RD (from HOUSTON ST to ISLAND EASTERN CORRIDOR)



## 1. TRAFFIC FLOW VARIATION AND GROWTH



## 2. TRAFFIC CHARACTERISTICS (BY DIRECTION)

Parameter	All - Day	Mon. - Fri.	Sat.	Sun.
<b>EAST BOUND</b>				
A.A.D.T.	69530	72180	70680	59120
R 12 / 24 - %	64.7	66.1	62.6	58.2
R 16 / 24 - %	84.5	86.2	80.6	78.6
AM Peak Hour	0900-1000	0900-1000	0900-1000	0900-1000
One-way flow at AM peak hour	3910	4350	3500	2340
T - % (AM)	-	9.5	-	-
PM Peak Hour	1600-1700	1600-1700	1600-1700	1600-1700
One-way flow at PM peak hour	4220	4400	4260	3530
T - % (PM)	-	7.6	-	-
Prop.of commercial vehicles - 16 hr.	-	8	-	-
<b>WEST BOUND</b>				
A.A.D.T.	76650	79280	78690	65890
R 12 / 24 - %	67.2	68.6	64.7	61.5
R 16 / 24 - %	85	86.5	81.5	80
AM Peak Hour	0900-1000	0800-0900	0900-1000	0900-1000
One-way flow at AM peak hour	4780	5430	4900	3180
T - % (AM)	-	9.3	-	-
PM Peak Hour	1800-1900	1800-1900	1700-1800	1800-1900
One-way flow at PM peak hour	4250	4410	4110	3840
T - % (PM)	-	7.2	-	-
Prop.of commercial vehicles - 16 hr.	-	8	-	-

## 3. OTHER INFORMATION AND COMMENT

**4. Vehicle classification and occupancy - Monday to Friday**

Time		Class of vehicle									
		Motor	Private	Taxi	Private	PLB	Goods veh.		Non	Fr. Bus	
		Cycle	Car		LB		Light	M & H	Fr. Bus	SD	DD
0700-0800	Pro	4.2	22.1	41.2	2.6	1.3	12.5	3.9	8.0	0.1	4.2
	Ocp	1.1	1.4	1.8	7.0	12.1	1.4	1.5	22.5	1.0	50.0
0800-0900 Peak hour	Pro	3.8	39.1	36.5	0.9	0.8	9.1	2.7	3.5	0.1	3.6
	Ocp	1.1	1.3	1.9	6.5	13.5	1.6	1.5	15.1	15.0	69.9
0900-1000	Pro	2.7	33.6	38.3	0.8	0.4	16.5	3.2	1.5	0.1	3.0
	Ocp	1.1	1.3	1.9	1.6	11.4	1.6	1.4	11.8	4.0	31.0
1000-1100	Pro	3.0	32.5	32.0	0.8	0.3	23.1	4.6	0.9	0.1	2.7
	Ocp	1.0	1.3	1.9	2.8	5.0	1.6	1.3	10.4	1.0	27.8
1100-1200	Pro	3.2	27.4	30.9	1.3	0.3	27.9	4.7	1.7	0.1	2.6
	Ocp	1.1	1.4	2.0	1.7	6.0	1.5	1.4	4.8	5.5	25.9
1200-1300	Pro	2.8	35.9	31.7	0.9	0.4	20.7	3.0	2.2	0.1	2.3
	Ocp	1.1	1.4	2.0	3.1	5.0	1.6	1.6	12.4	6.0	24.9
1300-1400	Pro	2.7	32.3	30.0	0.8	0.3	24.6	4.6	2.2	0.1	2.5
	Ocp	1.0	1.5	2.0	4.6	4.2	1.6	1.4	11.6	11.5	26.1
1400-1500	Pro	3.6	34.4	30.3	1.3	0.4	20.5	4.1	3.0	0.1	2.3
	Ocp	1.1	1.5	2.0	1.9	3.0	1.6	1.4	13.0	9.0	23.7
1500-1600	Pro	3.5	35.6	28.8	2.1	0.3	21.5	3.3	2.3	0.1	2.4
	Ocp	1.1	1.4	2.0	3.8	3.8	1.6	1.3	13.2	6.3	25.6
1600-1700	Pro	3.5	34.8	31.9	1.9	0.2	19.3	3.1	2.4	0.1	2.8
	Ocp	1.1	1.5	1.7	2.5	4.8	1.6	1.5	6.5	1.0	25.5
1700-1800	Pro	5.5	37.4	30.3	1.4	0.5	16.3	1.8	3.4	0.1	3.3
	Ocp	1.1	1.4	2.0	2.6	7.2	1.5	1.3	9.0	1.0	34.7
1800-1900	Pro	5.9	47.2	28.5	0.9	0.8	10.3	1.3	1.9	0.1	3.1
	Ocp	1.1	1.5	2.0	5.9	11.8	1.5	1.4	18.9	23.5	52.2
1900-2000	Pro	3.5	49.7	33.6	0.4	1.0	5.6	1.0	1.8	0.1	3.3
	Ocp	1.1	1.4	2.1	1.0	13.2	1.6	1.6	6.4	3.5	39.9
2000-2100	Pro	3.4	41.9	43.7	0.2	1.3	4.5	0.7	0.8	0.2	3.2
	Ocp	1.1	1.4	2.0	1.3	9.2	1.5	1.6	5.7	3.7	27.1
2100-2200	Pro	3.4	38.1	47.7	0.1	1.1	5.3	0.8	0.6	0.1	2.8
	Ocp	1.1	1.5	1.8	1.0	10.7	1.7	1.5	8.5	1.0	27.3
2200-2300	Pro	3.2	35.9	51.3	0.3	1.3	4.4	0.5	0.4	0.1	2.6
	Ocp	1.1	1.6	1.8	1.4	7.9	1.4	1.6	4.4	1.0	25.8
16 hours	Pro	3.6	36.3	35.1	1.0	0.6	15.3	2.8	2.3	0.1	2.9
	Ocp	1.1	1.4	1.9	3.6	9.5	1.6	1.4	13.3	4.9	36.1

**Legend**

- Pro.** Proportion of vehicles in % (Sum may not add up to 100% due to figure rounding)
- Ocp.** Average occupancy of vehicles
- M&H** Medium and Heavy