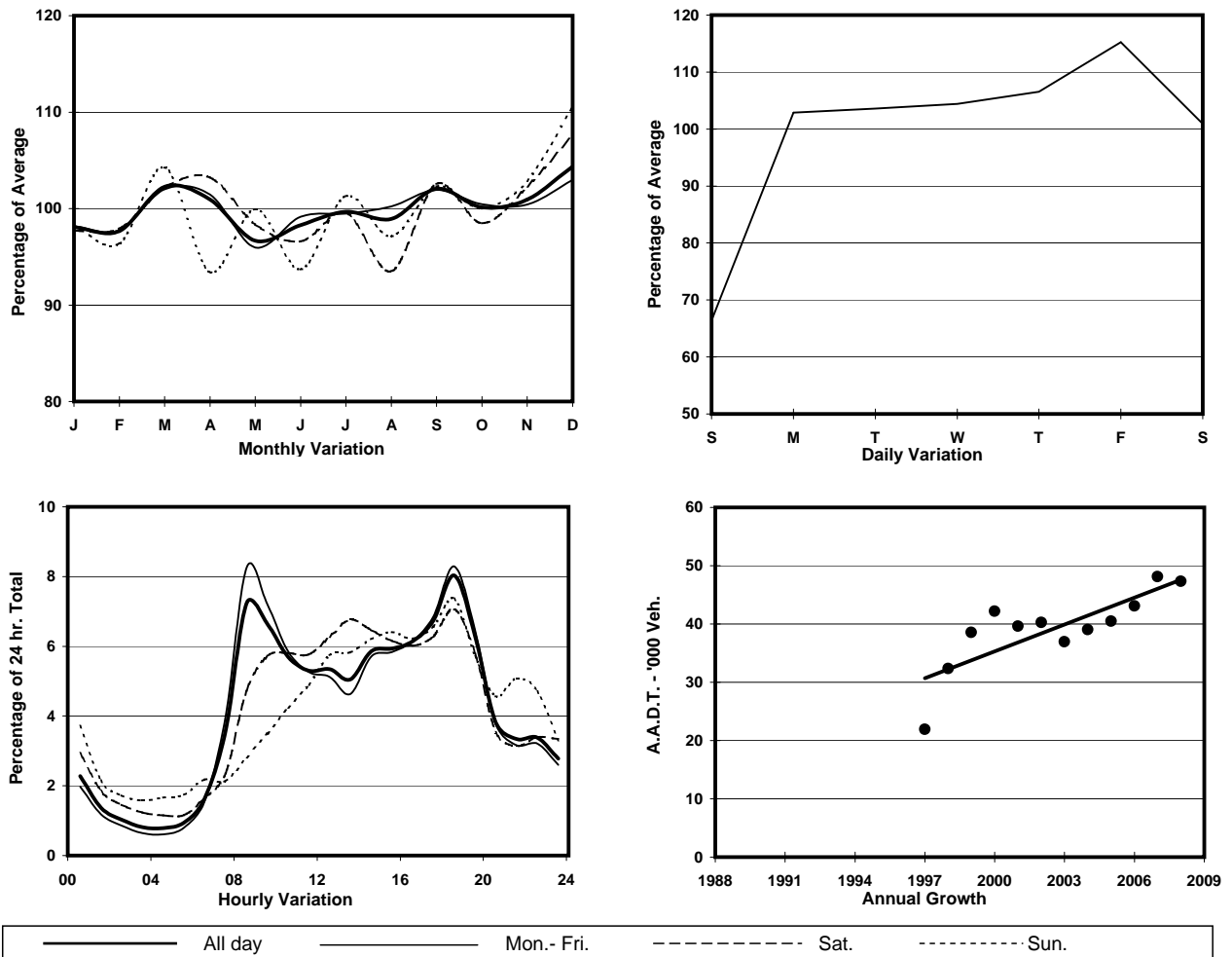


YEAR 2008
CORE STATION 1026
ROAD NETWORK MAJOR
ROAD TYPE URBAN TRUNK ROAD

LINK WESTERN HARBOUR CROSSING (from TOLL PLAZA to SOUTH PORTAL)



1. TRAFFIC FLOW VARIATION AND GROWTH



2. TRAFFIC CHARACTERISTICS (BY DIRECTION)

Parameter	All - Day	Mon. - Fri.	Sat.	Sun.
SOUTH BOUND				
A.A.D.T.	23510	25430	24390	16020
R 12 / 24 - %	72.4	74.8	68.5	59.2
R 16 / 24 - %	87.1	88.8	83.4	79.6
AM Peak Hour	0800-0900	0800-0900	0900-1000	0900-1000
One-way flow at AM peak hour	2060	2580	1720	560
T - % (AM)	-	19.7	-	-
PM Peak Hour	1800-1900	1800-1900	1800-1900	1800-1900
One-way flow at PM peak hour	1600	1750	1510	1170
T - % (PM)	-	10.6	-	-
Prop.of commercial vehicles - 16 hr.	-	12.3	-	-
NORTH BOUND				
A.A.D.T.	23820	25890	24270	16070
R 12 / 24 - %	70.7	71.5	70.2	64.6
R 16 / 24 - %	89.6	90.7	87.1	84.3
AM Peak Hour	0800-0900	0800-0900	0900-1000	0900-1000
One-way flow at AM peak hour	1360	1650	1070	570
T - % (AM)	-	10.4	-	-
PM Peak Hour	1800-1900	1800-1900	1800-1900	1800-1900
One-way flow at PM peak hour	2200	2510	1930	1200
T - % (PM)	-	13.3	-	-
Prop.of commercial vehicles - 16 hr.	-	10.9	-	-

3. OTHER INFORMATION AND COMMENT

4. Vehicle classification and occupancy - Monday to Friday

Time		Class of vehicle									
		Motor	Private	Taxi	Private	PLB	Goods veh.		Non	Fr. Bus	
		Cycle	Car		LB		Light	M & H	Fr. Bus	SD	DD
0700-0800	Pro	1.9	21.0	35.0	0.0	6.5	13.6	1.9	7.1	0.7	12.4
	Ocp	1.3	1.7	2.3	0.0	17.0	1.8	2.0	39.3	29.1	64.6
0800-0900	Pro	1.9	45.8	19.3	0.2	5.9	10.7	2.3	6.8	0.2	7.0
	Ocp	1.0	1.4	2.2	10.5	16.9	1.9	2.0	44.2	27.9	76.8
0900-1000	Pro	0.8	49.4	21.4	0.8	4.6	13.4	1.9	1.9	0.2	5.7
	Ocp	1.1	1.5	2.3	2.3	16.5	1.9	1.6	28.9	16.9	43.8
1000-1100	Pro	1.0	50.6	19.7	1.6	2.5	14.6	2.6	1.0	0.2	6.2
	Ocp	1.1	1.5	2.4	3.2	15.1	1.9	1.9	29.4	12.8	34.9
1100-1200	Pro	0.6	47.7	22.6	1.4	2.0	14.8	3.0	1.4	0.3	6.1
	Ocp	1.3	1.5	2.5	3.1	16.5	1.8	1.6	24.8	13.7	33.8
1200-1300	Pro	1.5	51.8	22.1	1.2	2.9	10.5	1.9	1.2	0.3	6.6
	Ocp	1.0	1.5	2.5	2.3	14.8	2.1	1.7	25.3	26.2	32.1
1300-1400	Pro	0.6	48.5	18.1	1.8	4.1	13.0	3.9	2.2	0.3	7.6
	Ocp	1.0	1.6	2.4	4.3	15.5	1.9	2.1	30.1	13.0	38.0
1400-1500	Pro	1.1	48.4	23.8	1.2	2.6	12.7	2.3	1.8	0.3	5.8
	Ocp	1.3	1.6	2.6	2.6	14.7	2.3	2.1	31.8	12.9	35.0
1500-1600	Pro	0.6	50.8	22.7	0.8	2.4	12.2	2.9	2.0	0.3	5.3
	Ocp	1.0	1.7	2.0	4.8	14.3	2.0	1.6	23.3	19.1	34.0
1600-1700	Pro	0.7	53.7	20.1	1.2	2.8	10.9	1.9	2.1	0.2	6.3
	Ocp	1.6	1.6	2.4	3.1	15.3	1.8	1.6	15.9	12.9	40.7
1700-1800	Pro	1.6	57.3	18.7	0.3	4.6	8.5	0.9	1.4	0.2	6.5
	Ocp	1.2	1.6	2.5	1.5	16.3	2.0	2.0	32.8	23.0	51.9
1800-1900 Peak hour	Pro	1.3	54.9	18.0	0.9	5.6	7.1	1.4	4.1	0.2	6.6
	Ocp	1.3	1.5	2.6	2.3	17.0	1.7	1.5	43.2	21.5	69.2
1900-2000	Pro	1.3	62.9	16.9	0.3	5.2	4.2	0.6	2.9	0.2	5.4
	Ocp	1.2	1.4	2.4	1.7	17.0	1.5	1.7	34.9	18.9	55.7
2000-2100	Pro	0.4	53.2	21.7	0.6	9.2	2.6	0.8	2.4	0.3	8.8
	Ocp	1.0	1.6	2.3	2.7	16.7	1.5	1.3	23.1	17.2	45.3
2100-2200	Pro	1.1	55.6	20.0	0.6	8.2	1.7	0.3	1.4	0.4	10.7
	Ocp	1.5	1.4	2.3	2.5	17.0	1.5	2.0	21.4	15.2	42.2
2200-2300	Pro	0.4	51.6	29.7	0.2	6.4	1.8	0.4	0.9	0.3	8.3
	Ocp	1.0	1.7	2.4	2.0	16.5	1.1	1.0	42.8	12.2	45.2
16 hours	Pro	1.1	51.3	21.0	0.8	4.5	9.8	1.9	2.6	0.3	6.8
	Ocp	1.2	1.5	2.4	3.2	16.4	1.9	1.8	35.1	18.6	48.8

Legend

- Pro.** Proportion of vehicles in % (Sum may not add up to 100% due to figure rounding)
- Ocp.** Average occupancy of vehicles
- M&H** Medium and Heavy