

YEAR

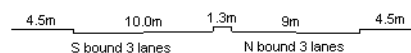
2008

LINK

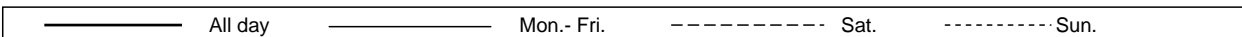
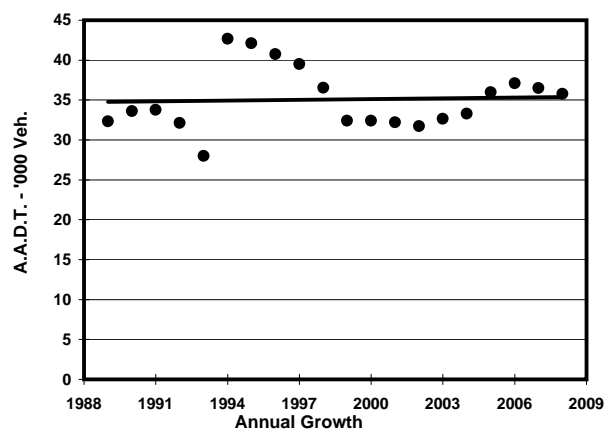
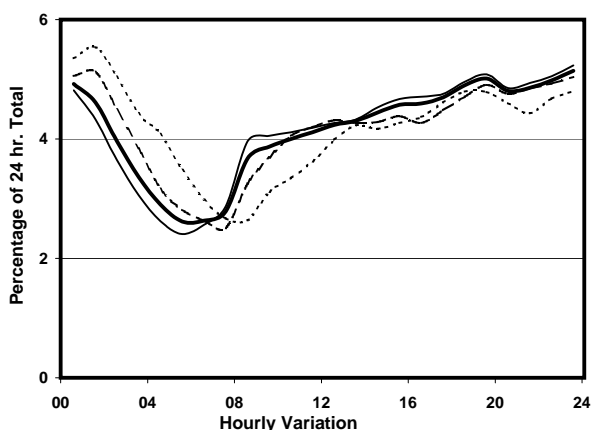
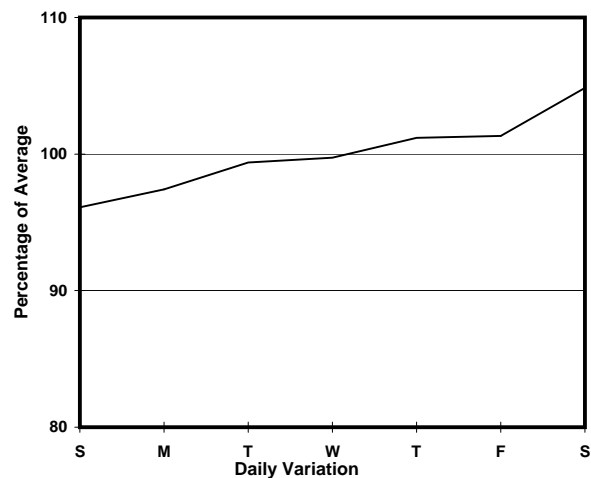
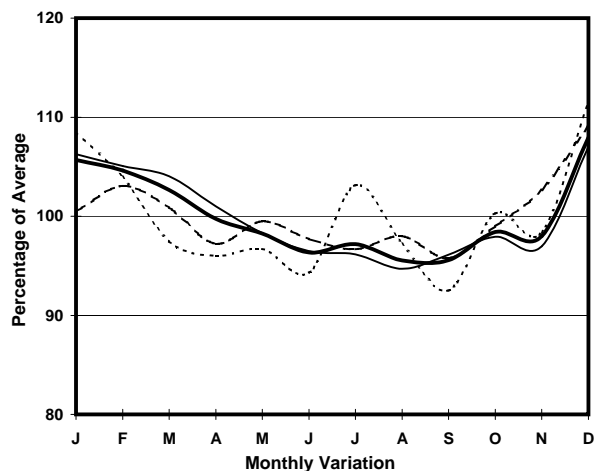
NATHAN RD (from SHANTUNG ST to DUNDAS ST)

CORE STATION
ROAD NETWORK
ROAD TYPE

3006
MAJOR
PRIMARY DISTRIBUTOR



1. TRAFFIC FLOW VARIATION AND GROWTH



2. TRAFFIC CHARACTERISTICS (BY DIRECTION)

Parameter	All - Day	Mon. - Fri.	Sat.	Sun.
SOUTH BOUND				
A.A.D.T.	19290	19380	20340	18050
R 12 / 24 - %	54.5	55.6	52.4	50.7
R 16 / 24 - %	74.6	75.9	72.5	69.9
AM Peak Hour	0900-1000	0800-0900	0900-1000	0900-1000
One-way flow at AM peak hour	840	930	850	620
T - % (AM)	-	30.2	-	-
PM Peak Hour	1800-1900	1800-1900	1800-1900	1800-1900
One-way flow at PM peak hour	990	990	1020	970
T - % (PM)	-	24.5	-	-
Prop.of commercial vehicles - 16 hr.	-	27.1	-	-
NORTH BOUND				
A.A.D.T.	16500	16420	17240	16440
R 12 / 24 - %	45.2	46.5	43.6	40.5
R 16 / 24 - %	64.3	65.9	62.3	58.2
AM Peak Hour	0900-1000	0900-1000	0900-1000	0700-0800
One-way flow at AM peak hour	540	560	540	450
T - % (AM)	-	49.2	-	-
PM Peak Hour	1800-1900	1800-1900	1800-1900	1800-1900
One-way flow at PM peak hour	760	780	750	680
T - % (PM)	-	42.6	-	-
Prop.of commercial vehicles - 16 hr.	-	38.9	-	-

3. OTHER INFORMATION AND COMMENT

4. Vehicle classification and occupancy - Monday to Friday

Time		Class of vehicle									
		Motor Cycle	Private Car	Taxi	Private LB	PLB	Goods veh.		Non Fr. Bus	Fr. Bus	
							Light	M & H		SD	DD
0700-0800	Pro	1.5	6.6	23.2	1.5	2.5	9.6	1.5	1.0	1.0	51.6
	Ocp	1.3	1.6	2.0	5.0	2.6	1.6	2.0	1.0	8.0	27.0
0800-0900	Pro	1.7	28.2	20.5	0.6	0.3	10.7	1.4	1.7	0.8	34.1
	Ocp	1.2	1.7	2.1	6.5	1.0	2.1	2.2	12.2	8.5	30.2
0900-1000	Pro	2.1	13.2	26.7	0.3	0.5	19.9	1.3	0.5	0.7	34.7
	Ocp	1.1	1.7	1.9	4.0	15.0	1.8	1.8	17.0	6.1	17.7
1000-1100	Pro	1.9	6.7	28.7	0.5	0.5	26.3	1.9	0.3	0.8	32.5
	Ocp	1.0	1.8	1.7	1.5	9.0	1.6	2.1	1.0	6.1	15.3
1100-1200	Pro	2.2	14.6	31.8	0.6	0.8	19.2	1.6	1.4	0.5	27.3
	Ocp	1.0	1.4	2.0	4.5	11.7	1.8	1.3	3.0	7.0	17.0
1200-1300	Pro	1.9	13.2	36.5	0.5	0.3	16.4	0.5	1.1	0.6	29.1
	Ocp	1.1	1.5	1.8	1.5	1.0	1.6	1.0	2.5	6.8	18.5
1300-1400	Pro	1.4	10.3	36.2	0.0	2.0	15.8	1.1	1.1	0.6	31.3
	Ocp	1.0	1.3	1.8	0.0	6.1	1.7	1.5	8.8	7.3	18.7
1400-1500	Pro	4.5	12.9	32.6	1.9	2.6	17.7	0.7	0.5	0.6	25.9
	Ocp	1.1	1.6	2.0	4.6	2.5	1.8	2.3	12.0	6.7	22.7
1500-1600	Pro	0.2	13.3	35.5	0.7	2.5	20.6	1.1	0.5	0.5	25.1
	Ocp	1.0	1.6	2.1	1.3	4.5	1.7	1.4	3.5	9.9	21.6
1600-1700	Pro	3.2	12.8	32.9	0.2	2.2	17.5	0.5	0.7	0.7	29.2
	Ocp	1.1	1.7	1.9	4.0	5.1	1.6	1.0	13.7	8.0	25.6
1700-1800	Pro	1.5	13.1	32.6	0.5	4.1	13.6	0.8	1.0	0.4	32.4
	Ocp	1.0	1.6	2.0	3.0	5.3	1.7	2.0	2.0	6.7	29.2
1800-1900	Pro	3.8	18.0	34.0	0.0	4.3	6.8	0.2	0.5	0.6	31.8
	Ocp	1.1	1.7	1.8	0.0	8.8	1.7	1.0	12.5	9.4	38.5
1900-2000 Peak hour	Pro	2.2	21.9	41.8	0.0	5.1	5.1	0.2	0.9	0.3	22.4
	Ocp	1.2	1.8	2.1	0.0	10.7	1.4	1.0	10.5	6.8	34.5
2000-2100	Pro	2.3	18.3	45.1	0.0	5.2	2.8	0.0	0.8	0.5	25.0
	Ocp	1.1	1.9	2.0	0.0	9.4	1.7	0.0	10.7	8.1	24.8
2100-2200	Pro	2.4	12.1	48.1	0.5	4.7	1.1	0.0	1.3	0.7	29.2
	Ocp	1.1	1.5	1.9	5.0	10.0	1.8	0.0	5.6	6.6	22.6
2200-2300	Pro	2.1	14.7	46.4	0.0	4.9	1.8	0.0	0.0	0.6	29.6
	Ocp	1.4	1.6	1.9	0.0	11.4	1.6	0.0	0.0	3.0	24.3
16 hours	Pro	2.2	14.7	35.0	0.5	2.7	12.8	0.8	0.8	0.6	29.9
	Ocp	1.1	1.6	1.9	3.9	8.1	1.7	1.7	7.7	7.2	24.4

Legend

- Pro.** Proportion of vehicles in % (Sum may not add up to 100% due to figure rounding)
- Ocp.** Average occupancy of vehicles
- M&H** Medium and Heavy