

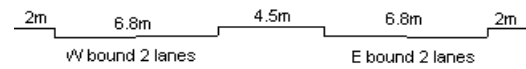
YEAR 2008

CORE STATION 5017

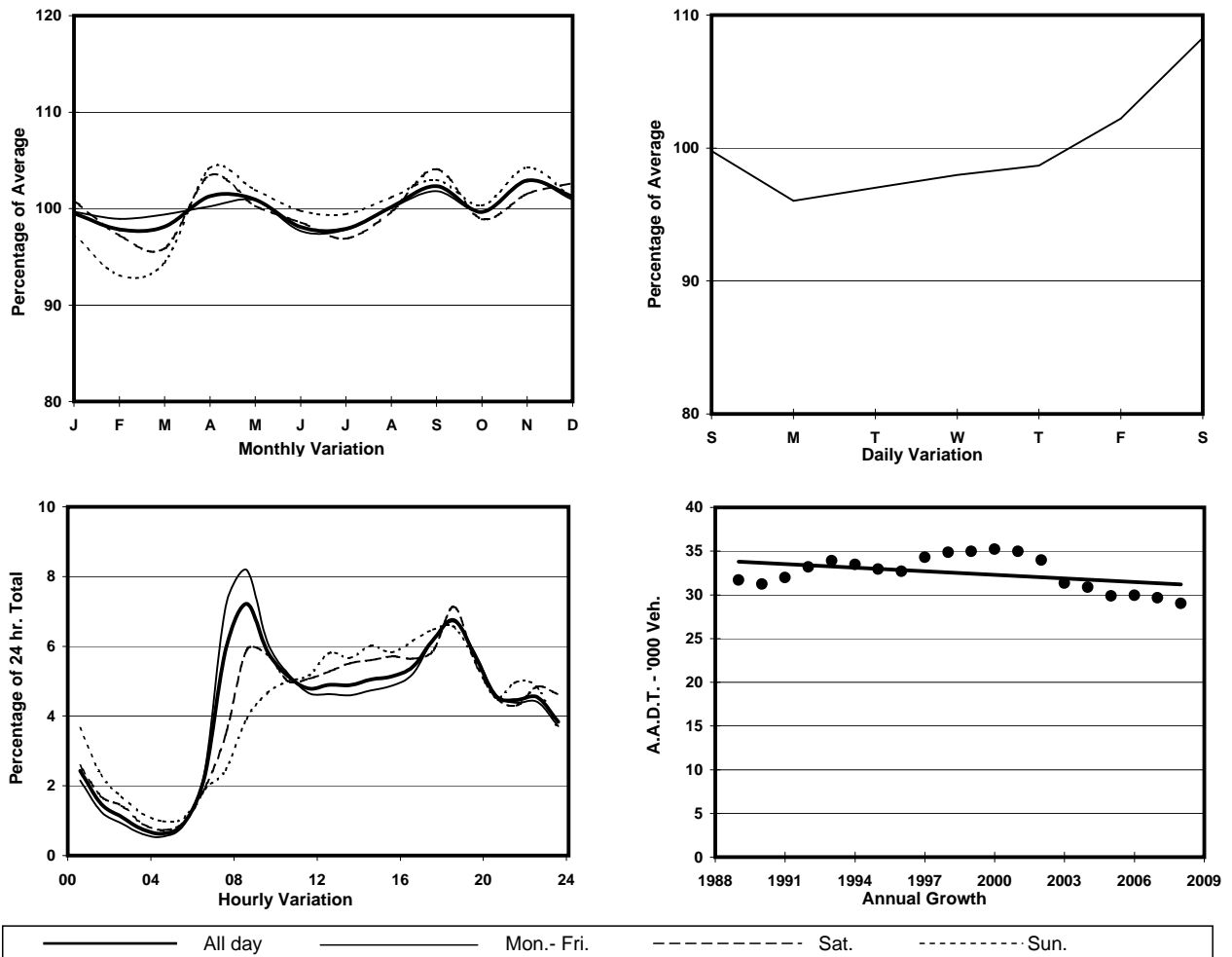
ROAD NETWORK MAJOR

ROAD TYPE RURAL ROAD

LINK CLEAR WATER BAY RD (from ANDERSON RD to HIRAM'S HIGHWAY)



## 1. TRAFFIC FLOW VARIATION AND GROWTH



## 2. TRAFFIC CHARACTERISTICS (BY DIRECTION)

Parameter	All - Day	Mon. - Fri.	Sat.	Sun.
<b>EAST BOUND</b>				
A.A.D.T.	14800	14490	16090	15070
R 12 / 24 - %	62.1	62	62.6	61.9
R 16 / 24 - %	85.2	86.2	83.8	82.3
AM Peak Hour	0800-0900	0800-0900	0800-0900	0900-1000
One-way flow at AM peak hour	830	900	770	640
T - % (AM)	-	9.5	-	-
PM Peak Hour	1800-1900	1800-1900	1800-1900	1700-1800
One-way flow at PM peak hour	1060	1080	1130	900
T - % (PM)	-	2.7	-	-
Prop.of commercial vehicles - 16 hr.	-	5.9	-	-
<b>WEST BOUND</b>				
A.A.D.T.	14220	14090	15380	13790
R 12 / 24 - %	72.7	74.8	69.4	65.6
R 16 / 24 - %	87.9	88.8	86.6	84.9
AM Peak Hour	0800-0900	0700-0800	0800-0900	0900-1000
One-way flow at AM peak hour	1260	1450	1080	710
T - % (AM)	-	7.8	-	-
PM Peak Hour	1800-1900	1700-1800	1800-1900	1800-1900
One-way flow at PM peak hour	900	880	1120	1020
T - % (PM)	-	6.2	-	-
Prop.of commercial vehicles - 16 hr.	-	5.7	-	-

## 3. OTHER INFORMATION AND COMMENT

**4. Vehicle classification and occupancy - Monday to Friday**

Time		Class of vehicle									
		Motor Cycle	Private Car	Taxi	Private LB	PLB	Goods veh.		Non Fr. Bus	Fr. Bus	
							Light	M & H		SD	DD
0700-0800	Pro	5.7	49.1	9.1	2.1	17.1	8.6	1.8	4.9	0.0	1.6
	Ocp	1.1	1.9	2.1	2.9	13.2	1.9	1.1	10.9	0.0	45.4
0800-0900 Peak hour	Pro	3.4	60.5	7.6	1.8	9.4	12.3	1.5	2.4	0.0	1.3
	Ocp	1.1	1.6	1.6	4.3	15.2	1.7	1.3	11.8	0.0	44.3
0900-1000	Pro	4.0	53.6	9.2	1.6	9.4	16.3	3.1	1.1	0.0	1.7
	Ocp	1.1	1.3	1.9	2.6	12.8	1.9	1.6	30.4	0.0	23.4
1000-1100	Pro	4.6	48.9	8.9	0.8	8.4	20.3	5.7	0.8	0.0	1.7
	Ocp	1.1	1.5	1.8	2.0	13.3	1.6	1.3	19.3	0.0	20.9
1100-1200	Pro	4.1	51.0	9.4	2.5	9.4	16.9	3.4	1.6	0.0	1.7
	Ocp	1.1	1.4	1.8	2.3	10.2	1.8	1.5	3.0	0.0	18.4
1200-1300	Pro	2.8	50.5	8.1	2.5	10.5	16.4	3.4	4.0	0.0	1.7
	Ocp	1.1	1.4	1.8	4.6	9.6	1.5	1.2	10.9	0.0	21.6
1300-1400	Pro	3.5	49.5	7.0	1.0	10.2	20.6	5.7	0.6	0.0	2.0
	Ocp	1.2	1.5	1.8	2.3	12.1	1.8	1.3	2.5	0.0	23.7
1400-1500	Pro	4.2	50.5	9.8	2.0	8.8	15.6	5.9	1.3	0.0	1.9
	Ocp	1.1	1.6	1.6	1.8	9.1	1.6	1.4	17.8	0.0	18.8
1500-1600	Pro	4.9	47.4	5.5	3.5	8.4	21.8	3.2	3.5	0.0	1.7
	Ocp	1.1	1.6	1.7	8.1	13.4	1.6	1.0	5.0	0.0	20.5
1600-1700	Pro	4.2	46.4	13.2	2.4	8.5	19.3	2.1	2.4	0.0	1.5
	Ocp	1.0	1.5	2.0	4.6	14.4	1.9	1.4	11.1	0.0	27.7
1700-1800	Pro	5.3	47.1	11.7	2.3	11.0	16.9	1.8	2.5	0.0	1.5
	Ocp	1.1	1.7	1.7	5.3	13.8	1.8	1.3	11.3	0.0	44.2
1800-1900	Pro	3.9	65.0	8.3	1.3	11.7	7.2	0.2	1.1	0.0	1.4
	Ocp	1.1	1.4	2.1	4.8	14.8	1.7	2.0	14.0	0.0	64.4
1900-2000	Pro	4.5	65.4	8.7	0.5	13.8	5.6	0.0	0.5	0.0	1.1
	Ocp	1.2	1.7	1.7	4.0	12.4	1.6	0.0	7.0	0.0	33.4
2000-2100	Pro	2.2	62.7	12.0	0.0	11.7	8.3	0.6	0.9	0.1	1.5
	Ocp	1.1	1.7	1.9	0.0	11.7	1.8	1.5	7.3	1.0	15.1
2100-2200	Pro	3.4	60.0	12.5	0.0	14.7	6.6	0.0	0.9	0.0	1.8
	Ocp	1.2	1.5	1.9	0.0	8.9	1.3	0.0	2.0	0.0	13.9
2200-2300	Pro	6.4	57.6	15.9	0.0	13.4	3.2	0.4	1.1	0.0	2.1
	Ocp	1.2	1.5	1.8	0.0	10.3	1.7	1.0	1.3	0.0	17.6
16 hours	Pro	4.2	54.4	9.6	1.5	11.0	13.5	2.3	1.9	0.1	1.6
	Ocp	1.1	1.5	1.8	4.3	12.4	1.7	1.3	10.8	1.0	28.9

**Legend**

**Pro.** Proportion of vehicles in % (Sum may not add up to 100% due to figure rounding)  
**Ocp.** Average occupancy of vehicles  
**M&H** Medium and Heavy