

YEAR 2008

CORE STATION 5018

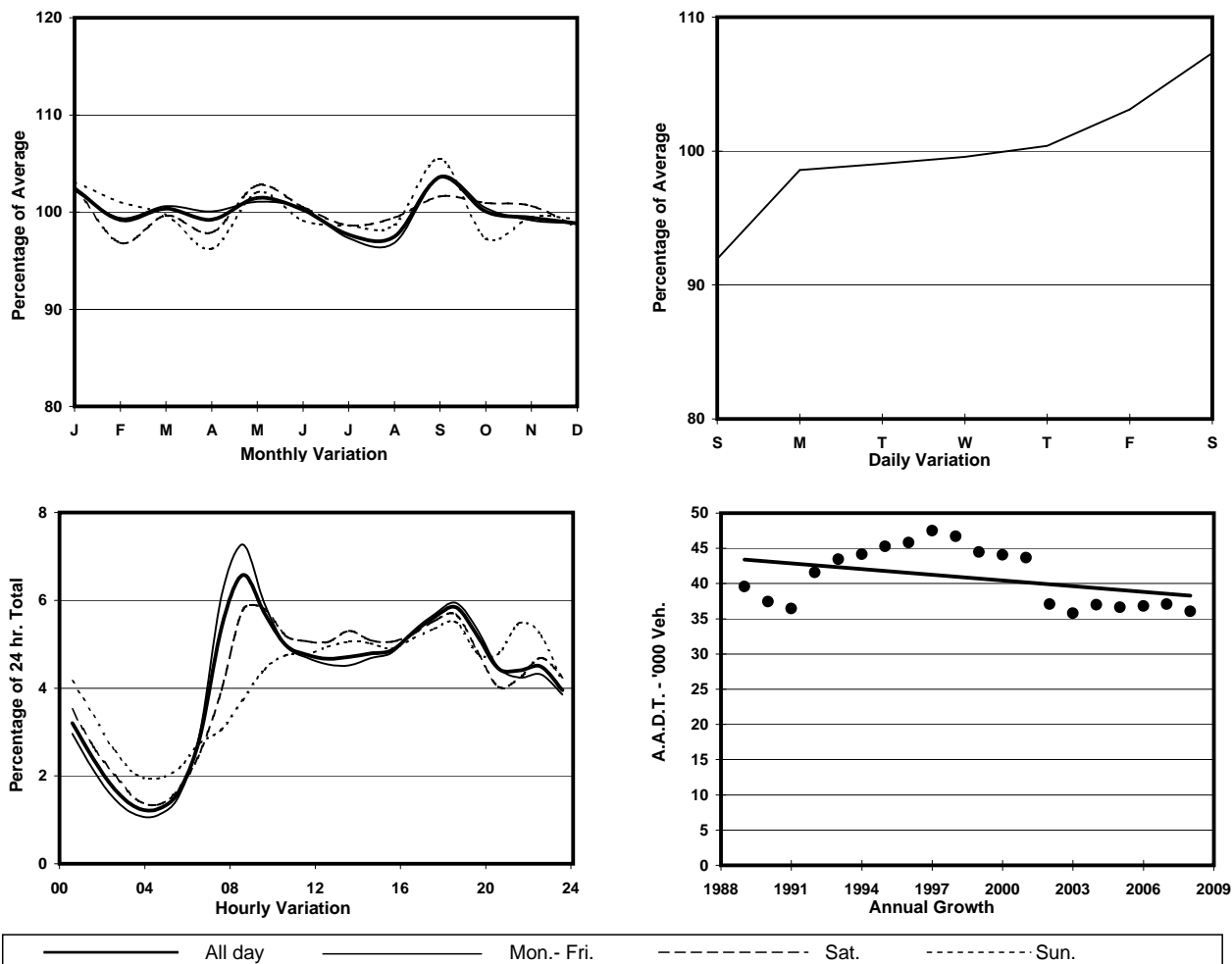
ROAD NETWORK MAJOR

ROAD TYPE DISTRICT DISTRIBUTOR

LINK TSING YI NORTH BRIDGE (from TSUEN TSING INT to TAM KON SHAN INT)



## 1. TRAFFIC FLOW VARIATION AND GROWTH



## 2. TRAFFIC CHARACTERISTICS (BY DIRECTION)

Parameter	All - Day	Mon. - Fri.	Sat.	Sun.
<b>EAST BOUND</b>				
A.A.D.T.	19920	19980	21620	18500
R 12 / 24 - %	65.5	66.8	64.8	59.5
R 16 / 24 - %	82.5	83.6	81.5	78.4
AM Peak Hour	0800-0900	0800-0900	0800-0900	0900-1000
One-way flow at AM peak hour	1500	1680	1400	910
T - % (AM)	-	12.7	-	-
PM Peak Hour	1800-1900	1800-1900	1800-1900	1800-1900
One-way flow at PM peak hour	1120	1130	1210	1010
T - % (PM)	-	15.9	-	-
Prop.of commercial vehicles - 16 hr.	-	17.9	-	-
<b>WEST BOUND</b>				
A.A.D.T.	16130	16260	17280	14780
R 12 / 24 - %	60.3	61.6	60.1	53
R 16 / 24 - %	80.7	82	79.3	75
AM Peak Hour	0800-0900	0800-0900	0900-1000	0900-1000
One-way flow at AM peak hour	870	960	900	560
T - % (AM)	-	26.3	-	-
PM Peak Hour	1800-1900	1800-1900	1800-1900	1800-1900
One-way flow at PM peak hour	990	1020	1000	820
T - % (PM)	-	18.1	-	-
Prop.of commercial vehicles - 16 hr.	-	20.8	-	-

## 3. OTHER INFORMATION AND COMMENT

**4. Vehicle classification and occupancy - Monday to Friday**

Time		Class of vehicle									
		Motor Cycle	Private Car	Taxi	Private LB	PLB	Goods veh.		Non Fr. Bus	Fr. Bus	
							Light	M & H		SD	DD
0700-0800	Pro	2.3	14.2	27.5	1.9	11.7	17.1	5.9	8.7	0.0	10.8
	Ocp	1.0	1.6	2.0	4.4	11.6	1.6	1.1	8.5	0.0	35.6
0800-0900 Peak hour	Pro	3.9	26.9	26.4	1.7	6.3	17.1	5.0	4.8	0.0	8.0
	Ocp	1.0	1.5	1.9	6.3	11.2	1.6	1.5	11.1	0.0	46.3
0900-1000	Pro	3.4	27.6	22.9	2.0	7.2	21.1	3.8	2.2	0.0	9.9
	Ocp	1.1	1.3	1.7	3.3	9.0	1.5	1.5	7.4	0.0	22.2
1000-1100	Pro	4.2	20.4	21.7	1.1	6.8	26.7	8.3	2.0	0.0	8.8
	Ocp	1.1	1.7	1.8	4.0	6.7	1.7	1.6	2.2	0.0	19.2
1100-1200	Pro	3.4	18.5	17.4	0.8	8.3	32.0	8.1	3.1	0.0	8.5
	Ocp	1.2	1.4	1.8	3.0	6.4	1.6	1.5	2.2	0.0	19.4
1200-1300	Pro	1.8	23.1	16.9	1.3	8.6	26.9	8.8	3.8	0.0	8.9
	Ocp	1.0	1.7	1.8	5.0	6.6	1.7	1.5	7.1	0.0	19.6
1300-1400	Pro	2.8	20.6	16.0	1.8	10.0	26.5	10.6	2.8	0.0	8.8
	Ocp	1.2	1.5	1.9	2.4	6.6	1.6	1.6	4.6	0.0	21.3
1400-1500	Pro	2.4	22.0	12.5	0.7	8.1	34.3	9.8	1.7	0.0	8.4
	Ocp	1.1	1.7	1.7	3.3	6.9	1.5	1.4	6.0	0.0	17.8
1500-1600	Pro	3.2	16.3	16.6	2.1	9.2	30.0	6.8	6.3	0.0	9.6
	Ocp	1.3	1.6	1.8	4.6	7.5	1.5	1.6	7.3	0.0	19.5
1600-1700	Pro	2.8	19.7	20.5	2.0	7.0	27.4	7.0	5.6	0.0	8.2
	Ocp	1.1	1.6	1.7	4.2	9.9	1.6	1.5	9.6	0.0	22.1
1700-1800	Pro	4.2	20.3	20.3	2.5	7.1	21.1	6.7	8.6	0.0	9.3
	Ocp	1.2	1.7	1.7	2.5	11.9	1.5	1.5	6.5	0.0	31.9
1800-1900	Pro	3.6	32.2	16.0	0.2	9.7	21.4	2.4	5.1	0.0	9.4
	Ocp	1.0	1.5	1.9	1.0	14.0	1.8	1.6	9.5	0.0	38.7
1900-2000	Pro	3.6	40.0	17.0	0.7	9.0	12.7	3.2	3.8	0.0	10.1
	Ocp	1.2	1.5	2.1	4.0	11.6	1.5	1.7	8.6	0.0	31.3
2000-2100	Pro	4.2	35.0	25.1	0.0	9.9	10.7	2.9	1.3	0.0	10.9
	Ocp	1.0	1.5	1.9	0.0	8.2	1.4	1.6	4.0	0.0	19.9
2100-2200	Pro	3.6	26.4	34.6	0.0	9.4	11.8	3.0	0.9	0.0	10.2
	Ocp	1.1	1.8	2.0	0.0	7.4	1.5	1.1	1.0	0.0	21.1
2200-2300	Pro	3.6	38.1	27.8	0.3	10.9	6.1	2.2	1.1	0.0	9.8
	Ocp	1.4	1.6	1.9	2.0	6.2	1.8	1.9	18.0	0.0	18.8
16 hours	Pro	3.3	25.0	21.2	1.3	8.6	21.4	5.8	4.1	0.0	9.3
	Ocp	1.1	1.6	1.8	3.9	9.2	1.6	1.5	7.8	0.0	26.5

**Legend**

**Pro.** Proportion of vehicles in % (Sum may not add up to 100% due to figure rounding)  
**Ocp.** Average occupancy of vehicles  
**M&H** Medium and Heavy