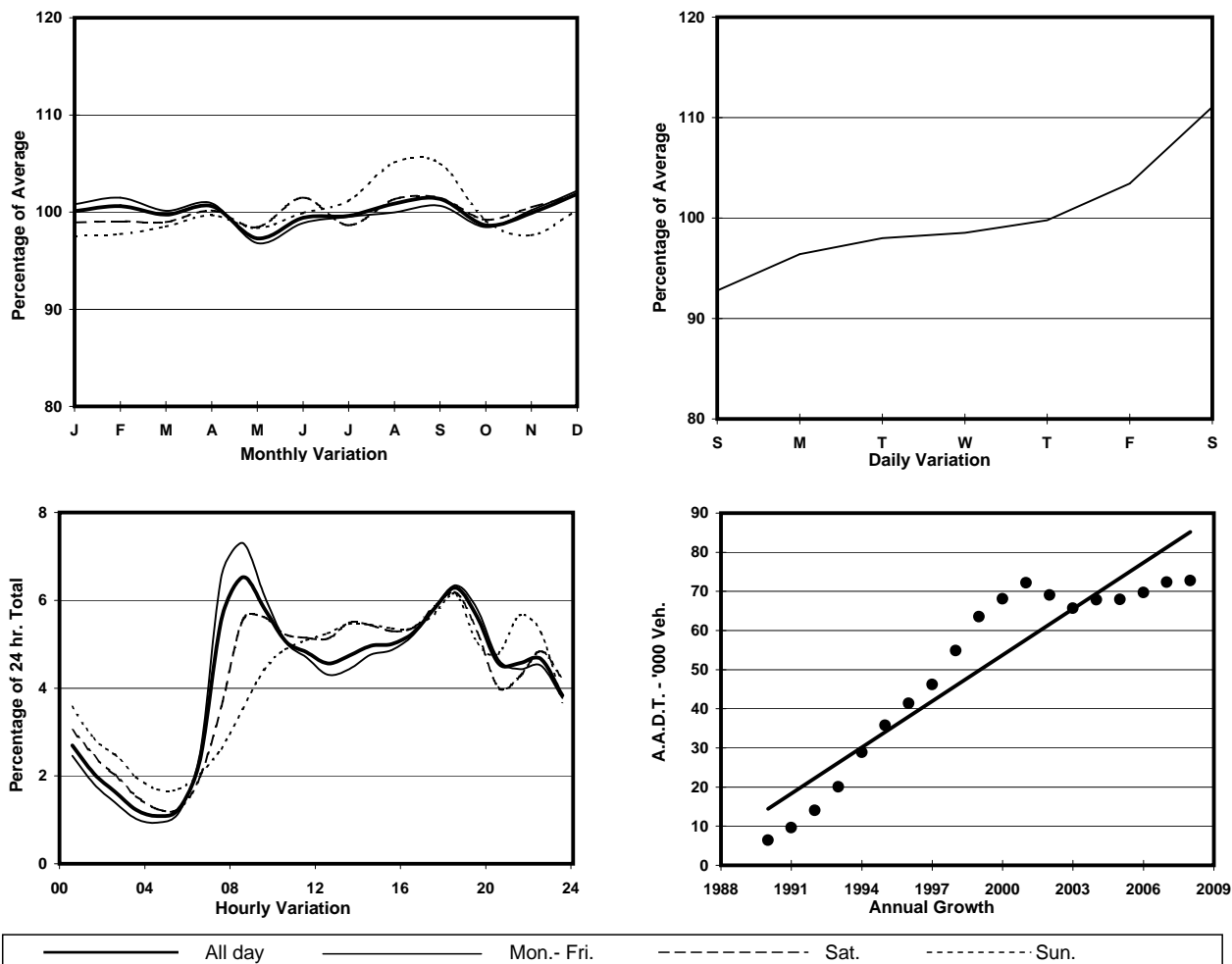


YEAR 2008  
CORE STATION 5021  
ROAD NETWORK MAJOR  
ROAD TYPE URBAN TRUNK ROAD

LINK TSEUNG KWAN O TUNNEL (from TOLL PLAZA to TSEUNG KWAN O TUNNEL RD RA)



## 1. TRAFFIC FLOW VARIATION AND GROWTH



## 2. TRAFFIC CHARACTERISTICS (BY DIRECTION)

Parameter	All - Day	Mon. - Fri.	Sat.	Sun.
<b>EAST BOUND</b>				
A.A.D.T.	36640	36480	40710	34350
R 12 / 24 - %	59.5	60.2	60	55.4
R 16 / 24 - %	82.4	83.6	80.4	78
AM Peak Hour	0800-0900	0800-0900	0900-1000	0900-1000
One-way flow at AM peak hour	1820	2000	1860	1260
T - % (AM)	-	10	-	-
PM Peak Hour	1800-1900	1800-1900	1800-1900	1800-1900
One-way flow at PM peak hour	2430	2500	2540	2050
T - % (PM)	-	16	-	-
Prop.of commercial vehicles - 16 hr.	-	15.6	-	-
<b>WEST BOUND</b>				
A.A.D.T.	36090	35980	40410	33290
R 12 / 24 - %	69.4	70.9	67.8	63.3
R 16 / 24 - %	85.3	86.2	84.1	82.1
AM Peak Hour	0800-0900	0800-0900	0800-0900	0900-1000
One-way flow at AM peak hour	2930	3300	2740	1730
T - % (AM)	-	18	-	-
PM Peak Hour	1800-1900	1800-1900	1800-1900	1800-1900
One-way flow at PM peak hour	2140	2100	2470	2100
T - % (PM)	-	11.8	-	-
Prop.of commercial vehicles - 16 hr.	-	17.3	-	-

## 3. OTHER INFORMATION AND COMMENT

**4. Vehicle classification and occupancy - Monday to Friday**

Time		Class of vehicle									
		Motor Cycle	Private Car	Taxi	Private LB	PLB	Goods veh.		Non Fr. Bus	Fr. Bus	
							Light	M & H		SD	DD
0700-0800	Pro	4.9	27.9	22.9	1.9	5.4	18.2	7.7	7.2	0.1	3.8
	Ocp	1.1	1.5	1.9	5.6	12.8	1.5	1.1	18.4	15.6	35.9
0800-0900 Peak hour	Pro	4.4	44.8	19.3	1.0	4.3	13.2	6.8	3.1	0.1	3.1
	Ocp	1.1	1.3	1.9	5.9	11.8	1.5	1.2	25.9	15.0	42.3
0900-1000	Pro	3.7	37.1	16.0	0.7	4.6	20.7	11.7	2.4	0.1	3.1
	Ocp	1.1	1.2	1.8	5.5	9.4	1.6	1.2	15.0	7.6	20.0
1000-1100	Pro	3.2	34.9	15.0	1.4	4.1	24.7	12.7	0.9	0.1	3.0
	Ocp	1.1	1.4	1.8	2.8	8.0	1.5	1.3	8.3	9.3	15.9
1100-1200	Pro	3.5	29.3	11.4	1.7	4.8	27.6	16.4	1.9	0.1	3.3
	Ocp	1.0	1.4	1.8	3.1	7.4	1.6	1.3	7.4	7.8	13.6
1200-1300	Pro	2.8	31.9	8.9	1.6	4.7	28.1	15.2	2.9	0.1	3.7
	Ocp	1.1	1.5	2.0	10.0	7.9	1.5	1.3	18.6	8.3	15.1
1300-1400	Pro	3.5	31.6	9.4	1.6	5.6	28.2	15.2	1.2	0.1	3.5
	Ocp	1.1	1.5	1.9	3.3	8.4	1.6	1.2	10.7	15.3	15.8
1400-1500	Pro	1.6	31.3	7.6	1.8	5.3	30.2	18.0	1.0	0.1	3.1
	Ocp	1.0	1.5	1.9	1.9	6.4	1.6	1.3	3.3	12.3	16.4
1500-1600	Pro	1.9	33.0	7.3	1.3	5.0	28.7	16.3	2.9	0.1	3.5
	Ocp	1.2	1.6	1.9	5.4	9.6	1.6	1.3	10.0	10.0	18.8
1600-1700	Pro	2.4	33.3	11.2	2.7	4.0	23.6	14.7	4.7	0.1	3.3
	Ocp	1.0	1.5	1.7	4.0	10.5	1.6	1.2	8.7	8.5	21.7
1700-1800	Pro	4.1	42.5	11.6	1.2	5.8	15.2	11.3	4.8	0.1	3.4
	Ocp	1.1	1.5	1.7	2.7	10.8	1.6	1.3	18.7	16.0	28.3
1800-1900	Pro	5.2	45.0	13.2	1.2	5.4	16.1	9.0	1.9	0.1	3.0
	Ocp	1.1	1.5	2.0	1.8	10.3	1.5	1.1	14.1	29.3	38.6
1900-2000	Pro	3.0	49.3	12.9	0.6	6.7	16.5	4.8	2.2	0.1	3.9
	Ocp	1.1	1.5	2.0	2.8	12.8	1.3	1.1	27.7	12.5	36.6
2000-2100	Pro	4.1	51.4	16.4	0.3	5.8	12.5	4.9	0.9	0.1	3.5
	Ocp	1.2	1.3	1.9	1.3	9.8	1.3	1.2	4.6	17.0	26.4
2100-2200	Pro	4.0	43.9	26.9	0.4	6.8	9.1	3.8	0.8	0.1	4.2
	Ocp	1.2	1.5	2.0	1.7	9.6	1.6	1.4	1.7	19.5	26.4
2200-2300	Pro	2.9	48.7	27.8	0.6	6.1	6.6	3.1	0.1	0.1	4.0
	Ocp	1.1	1.6	1.9	2.4	11.1	1.4	1.2	9.0	6.0	26.0
16 hours	Pro	3.5	38.9	15.1	1.2	5.2	19.5	10.4	2.5	0.1	3.4
	Ocp	1.1	1.5	1.9	4.1	10.0	1.5	1.2	15.9	13.2	26.1

**Legend**

**Pro.** Proportion of vehicles in % (Sum may not add up to 100% due to figure rounding)  
**Ocp.** Average occupancy of vehicles  
**M&H** Medium and Heavy