

YEAR 2008

CORE STATION 5024

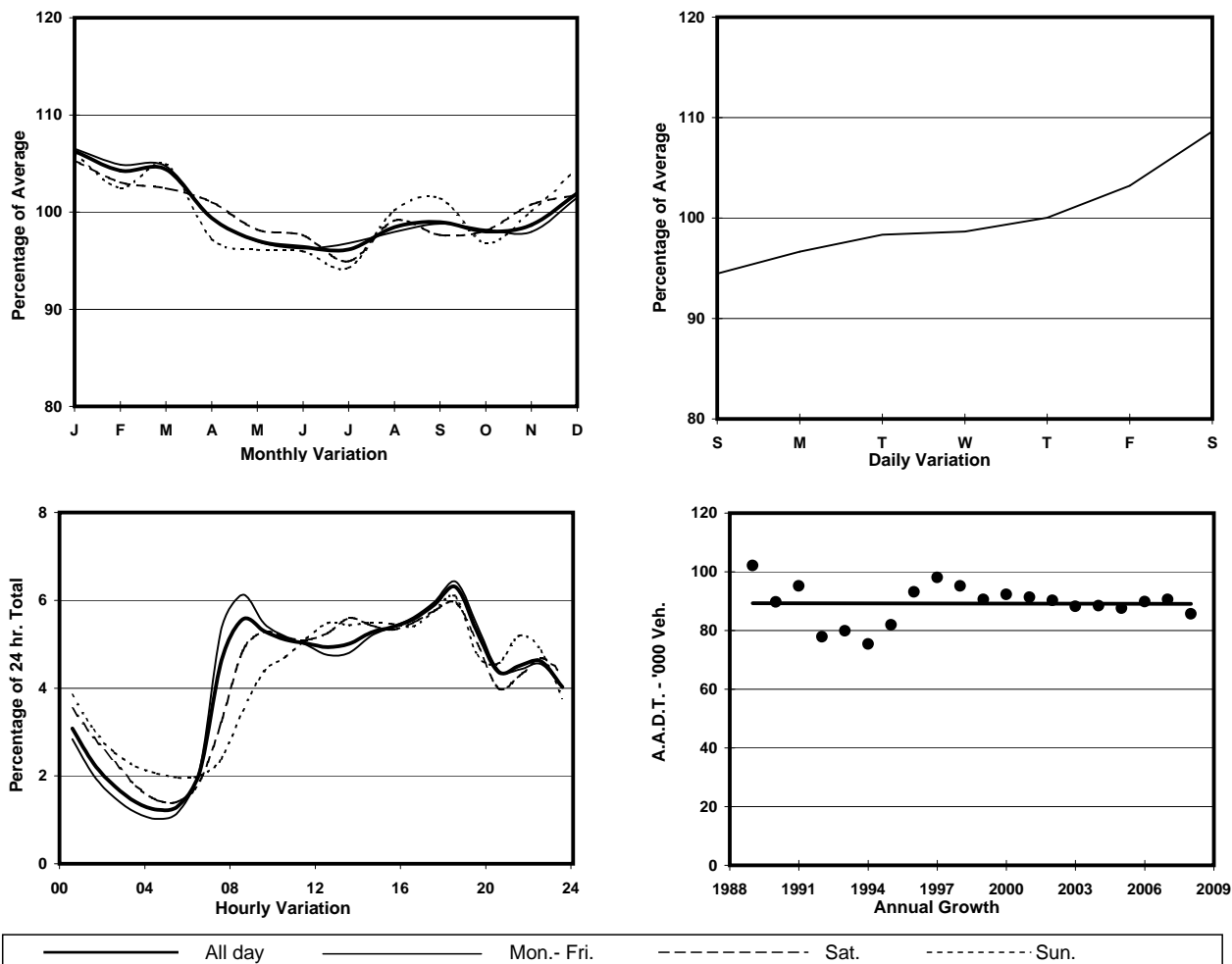
ROAD NETWORK MAJOR

ROAD TYPE URBAN TRUNK ROAD

LINK LION ROCK TUNNEL (from TOLL PLAZA to SOUTH PORTAL)



1. TRAFFIC FLOW VARIATION AND GROWTH



2. TRAFFIC CHARACTERISTICS (BY DIRECTION)

Parameter	All - Day	Mon. - Fri.	Sat.	Sun.
SOUTH BOUND				
A.A.D.T.	41770	41560	45630	39770
R 12 / 24 - %	69.3	70.5	67.5	64.8
R 16 / 24 - %	85.1	85.9	83.6	82.4
AM Peak Hour	0800-0900	0800-0900	0900-1000	0900-1000
One-way flow at AM peak hour	2720	2930	2860	2130
T - % (AM)	-	17.6	-	-
PM Peak Hour	1800-1900	1800-1900	1800-1900	1800-1900
One-way flow at PM peak hour	2640	2610	2770	2720
T - % (PM)	-	14.8	-	-
Prop.of commercial vehicles - 16 hr.	-	17.3	-	-
NORTH BOUND				
A.A.D.T.	43940	43840	47650	41600
R 12 / 24 - %	59	60.3	57.5	53.8
R 16 / 24 - %	80.6	82.3	77.4	74.9
AM Peak Hour	0800-0900	0800-0900	0900-1000	0900-1000
One-way flow at AM peak hour	2060	2310	2070	1440
T - % (AM)	-	23.4	-	-
PM Peak Hour	1800-1900	1800-1900	1700-1800	1700-1800
One-way flow at PM peak hour	2760	2880	2780	2280
T - % (PM)	-	14.6	-	-
Prop.of commercial vehicles - 16 hr.	-	18.7	-	-

3. OTHER INFORMATION AND COMMENT

4. Vehicle classification and occupancy - Monday to Friday

Time		Class of vehicle									
		Motor Cycle	Private Car	Taxi	Private LB	PLB	Goods veh.		Non Fr. Bus	Fr. Bus	
							Light	M & H		SD	DD
0700-0800	Pro	2.1	35.4	13.5	1.0	0.4	20.0	10.9	7.8	0.1	8.9
	Ocp	1.2	1.6	2.0	2.4	10.0	1.5	1.2	7.1	1.0	46.0
0800-0900	Pro	2.2	46.6	10.5	0.5	0.5	19.6	7.4	6.0	0.0	6.7
	Ocp	1.2	1.4	2.1	3.3	13.1	1.6	1.3	14.3	0.0	47.9
0900-1000	Pro	2.5	39.3	9.5	0.7	0.3	27.3	8.6	4.8	0.0	6.9
	Ocp	1.0	1.4	1.9	4.1	10.8	1.5	1.3	13.2	0.0	27.0
1000-1100	Pro	2.0	34.3	11.3	1.1	0.4	30.5	11.5	3.0	0.0	5.9
	Ocp	1.3	1.6	2.0	2.3	9.4	1.5	1.3	13.1	0.0	25.2
1100-1200	Pro	1.4	36.4	12.7	2.0	0.1	27.6	11.3	3.2	0.0	5.5
	Ocp	1.1	1.7	1.8	2.1	15.0	1.5	1.3	14.3	0.0	27.2
1200-1300	Pro	1.4	39.1	11.4	0.9	0.3	28.5	10.3	2.3	0.0	5.9
	Ocp	1.1	1.7	2.0	2.2	7.3	1.6	1.3	11.3	0.0	27.2
1300-1400	Pro	1.5	35.9	10.3	1.1	0.3	31.7	10.6	2.7	0.0	5.9
	Ocp	1.1	1.6	2.0	2.8	6.7	1.6	1.3	8.0	0.0	33.4
1400-1500	Pro	2.1	38.8	7.8	1.5	0.4	29.7	11.1	2.6	0.1	6.0
	Ocp	1.0	1.7	2.3	2.2	8.0	1.5	1.3	13.0	1.0	27.6
1500-1600	Pro	1.4	41.1	8.5	1.4	0.3	28.2	10.3	2.6	0.1	6.2
	Ocp	1.1	1.6	2.0	2.1	11.0	1.6	1.3	11.9	1.0	28.7
1600-1700	Pro	1.6	39.4	10.5	1.0	0.3	27.7	9.4	4.0	0.0	6.1
	Ocp	1.1	1.6	1.6	3.3	9.5	1.6	1.2	10.2	0.0	31.0
1700-1800	Pro	1.6	44.4	10.2	0.8	0.4	23.5	8.6	3.6	0.1	6.9
	Ocp	1.1	1.6	2.0	3.2	14.0	1.6	1.1	11.9	1.0	42.2
1800-1900 Peak hour	Pro	3.7	53.7	8.0	0.4	0.9	18.7	4.3	4.5	0.0	5.9
	Ocp	1.1	1.5	2.4	1.8	14.8	1.7	1.2	17.5	0.0	58.7
1900-2000	Pro	1.7	60.1	9.5	0.7	1.1	13.7	4.4	3.1	0.0	5.6
	Ocp	1.2	1.5	2.1	2.0	14.8	1.5	1.1	11.1	0.0	52.4
2000-2100	Pro	1.7	58.5	15.3	0.1	1.6	10.0	3.9	2.4	0.0	6.6
	Ocp	1.4	1.4	2.0	2.0	12.8	1.5	1.1	14.2	0.0	36.7
2100-2200	Pro	2.7	53.4	17.5	0.2	2.3	11.4	3.4	2.6	0.0	6.5
	Ocp	1.4	1.6	2.2	1.5	10.4	1.5	1.1	9.4	0.0	32.9
2200-2300	Pro	1.6	55.7	22.9	0.0	2.3	6.8	2.7	1.6	0.0	6.5
	Ocp	1.4	1.7	2.0	0.0	11.9	1.4	1.1	5.1	0.0	35.4
16 hours	Pro	2.0	44.6	11.6	0.8	0.7	22.3	8.0	3.6	0.1	6.3
	Ocp	1.2	1.6	2.0	2.5	11.8	1.6	1.2	12.0	1.0	36.9

Legend

- Pro.** Proportion of vehicles in % (Sum may not add up to 100% due to figure rounding)
- Ocp.** Average occupancy of vehicles
- M&H** Medium and Heavy