

YEAR 2008

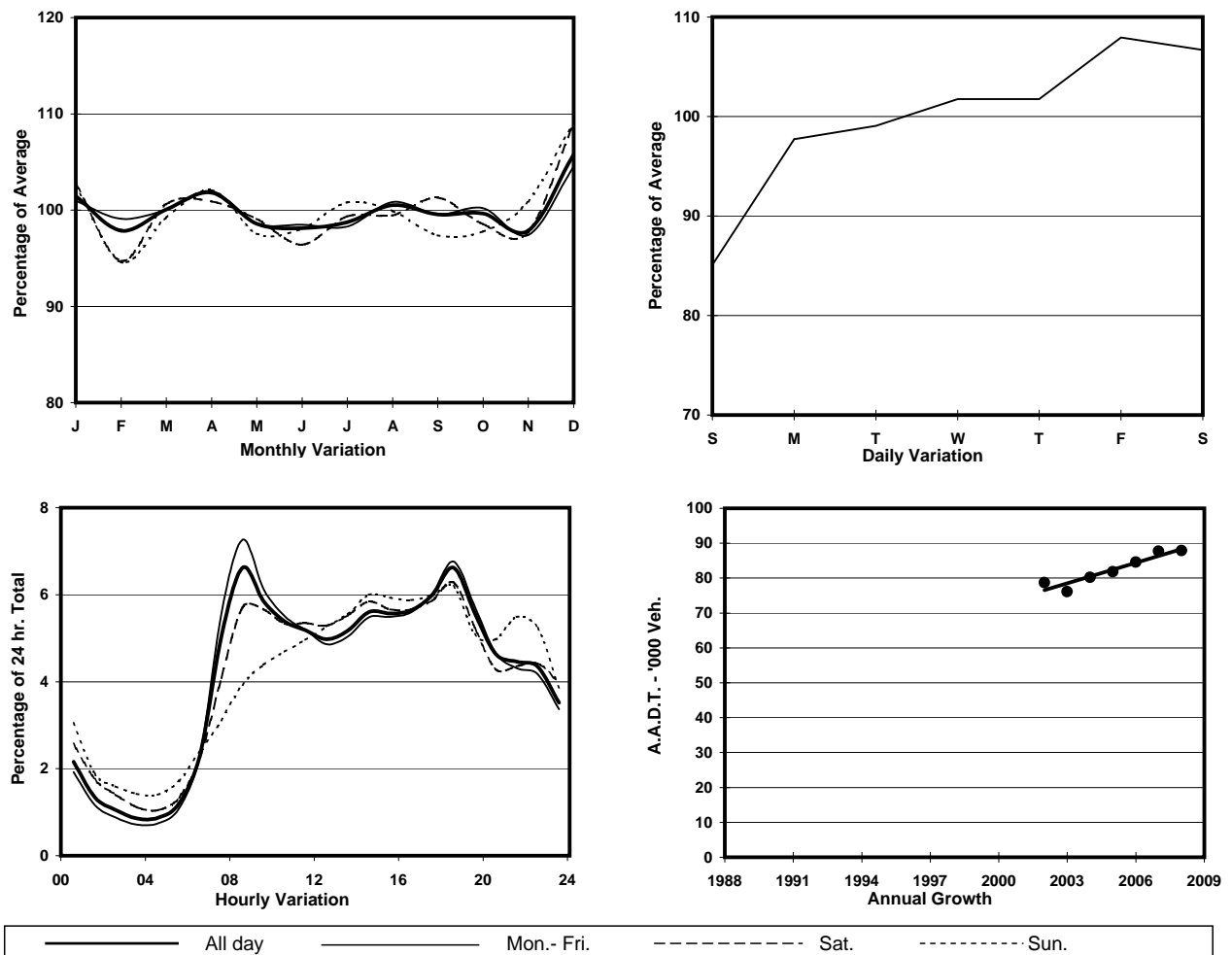
CORE STATION 5034

ROAD NETWORK MAJOR

ROAD TYPE EXPRESSWAY

LINK CHEUNG TSING TUNNEL & RAMBLER BRIDGE (from RAMBLER BRIDGE EASTERN END to WESTERN END OF CHEUNG TSING TUNNEL SLIP RDS TO & FROM TSING YI RD W)

1. TRAFFIC FLOW VARIATION AND GROWTH



2. TRAFFIC CHARACTERISTICS (BY DIRECTION)

| Parameter | All - Day | Mon. - Fri. | Sat. | Sun. |
|--------------------------------------|-----------|-------------|-----------|-----------|
| EAST BOUND | | | | |
| A.A.D.T. | 43130 | 44220 | 46420 | 36810 |
| R 12 / 24 - % | 73.1 | 74.5 | 71.2 | 67 |
| R 16 / 24 - % | 88.3 | 89.1 | 86.7 | 85.4 |
| AM Peak Hour | 0800-0900 | 0800-0900 | 0800-0900 | 0900-1000 |
| One-way flow at AM peak hour | 3590 | 4060 | 3330 | 1780 |
| T - % (AM) | - | 24.7 | - | - |
| PM Peak Hour | 1800-1900 | 1800-1900 | 1800-1900 | 1800-1900 |
| One-way flow at PM peak hour | 2730 | 2800 | 2850 | 2450 |
| T - % (PM) | - | 20.3 | - | - |
| Prop.of commercial vehicles - 16 hr. | - | 22.8 | - | - |
| WEST BOUND | | | | |
| A.A.D.T. | 44780 | 45860 | 48180 | 38490 |
| R 12 / 24 - % | 62.4 | 63.5 | 61.4 | 57 |
| R 16 / 24 - % | 85.1 | 86.5 | 82.5 | 80.1 |
| AM Peak Hour | 0900-1000 | 0800-0900 | 0900-1000 | 0900-1000 |
| One-way flow at AM peak hour | 2270 | 2480 | 2270 | 1520 |
| T - % (AM) | - | 26.8 | - | - |
| PM Peak Hour | 1800-1900 | 1800-1900 | 1800-1900 | 1800-1900 |
| One-way flow at PM peak hour | 3090 | 3300 | 3090 | 2220 |
| T - % (PM) | - | 21 | - | - |
| Prop.of commercial vehicles - 16 hr. | - | 23.9 | - | - |

3. OTHER INFORMATION AND COMMENT

4. Vehicle classification and occupancy - Monday to Friday

| Time | | Class of vehicle | | | | | | | | | |
|------------------------|-----|------------------|----------------|------|---------------|-----|------------|-------|----------------|---------|------|
| | | Motor Cycle | Private Car | Taxi | Private LB | PLB | Goods veh. | | Non Fr. Bus | Fr. Bus | |
| | | | | | | | Light | M & H | | SD | DD |
| 0700-0800 | Pro | 2.5 | 38.7 | 14.4 | 0.3 | 0.0 | 19.0 | 13.4 | 6.5 | 0.1 | 5.1 |
| | Ocp | 1.1 | 1.5 | 2.2 | 3.8 | 0.0 | 1.5 | 1.2 | 24.4 | 22.0 | 66.2 |
| 0800-0900 Peak hour | Pro | 1.7 | 46.6 | 9.4 | 0.3 | 0.0 | 16.4 | 12.9 | 7.7 | 0.1 | 4.8 |
| | Ocp | 1.0 | 1.3 | 2.2 | 5.8 | 0.0 | 1.6 | 1.2 | 36.9 | 15.5 | 64.3 |
| 0900-1000 | Pro | 1.7 | 44.7 | 8.7 | 1.0 | 0.0 | 22.1 | 11.5 | 5.0 | 0.1 | 5.2 |
| | Ocp | 1.0 | 1.5 | 2.1 | 4.2 | 0.0 | 1.6 | 1.3 | 25.2 | 14.2 | 36.3 |
| 1000-1100 | Pro | 0.1 | 37.9 | 8.8 | 0.8 | 0.0 | 22.6 | 20.4 | 4.1 | 0.1 | 5.2 |
| | Ocp | 1.0 | 1.5 | 2.1 | 2.2 | 0.0 | 1.6 | 1.2 | 14.9 | 8.3 | 31.9 |
| 1100-1200 | Pro | 0.6 | 40.0 | 11.2 | 0.5 | 0.0 | 22.4 | 17.2 | 3.5 | 0.1 | 4.5 |
| | Ocp | 1.1 | 1.5 | 2.5 | 4.8 | 0.0 | 1.6 | 1.2 | 11.7 | 9.0 | 31.9 |
| 1200-1300 | Pro | 1.1 | 41.6 | 10.4 | 0.7 | 0.0 | 19.8 | 15.9 | 5.6 | 0.1 | 4.7 |
| | Ocp | 1.2 | 1.5 | 2.3 | 2.5 | 0.0 | 1.5 | 1.2 | 19.5 | 12.3 | 26.3 |
| 1300-1400 | Pro | 1.5 | 33.9 | 12.0 | 1.1 | 0.0 | 24.0 | 18.4 | 4.5 | 0.1 | 4.5 |
| | Ocp | 1.1 | 1.5 | 2.4 | 2.9 | 0.0 | 1.4 | 1.2 | 14.9 | 9.8 | 26.6 |
| 1400-1500 | Pro | 0.4 | 38.7 | 8.3 | 0.9 | 0.0 | 27.7 | 15.6 | 4.5 | 0.1 | 3.8 |
| | Ocp | 1.2 | 1.5 | 1.8 | 3.9 | 0.0 | 1.5 | 1.2 | 18.5 | 12.6 | 29.5 |
| 1500-1600 | Pro | 1.2 | 39.6 | 11.1 | 0.6 | 0.0 | 21.2 | 15.8 | 6.2 | 0.1 | 4.2 |
| | Ocp | 1.1 | 1.6 | 2.4 | 2.9 | 0.0 | 1.7 | 1.3 | 20.1 | 9.2 | 23.3 |
| 1600-1700 | Pro | 0.8 | 42.8 | 8.3 | 1.3 | 0.0 | 23.3 | 12.1 | 6.7 | 0.1 | 4.5 |
| | Ocp | 1.2 | 1.7 | 2.0 | 3.0 | 0.0 | 1.6 | 1.5 | 11.9 | 15.7 | 31.1 |
| 1700-1800 | Pro | 2.1 | 45.0 | 8.8 | 0.8 | 0.0 | 20.6 | 13.2 | 4.6 | 0.1 | 4.9 |
| | Ocp | 1.0 | 1.6 | 2.1 | 2.9 | 0.0 | 1.5 | 1.2 | 19.1 | 14.2 | 43.3 |
| 1800-1900 | Pro | 2.0 | 54.3 | 9.0 | 0.4 | 0.0 | 13.7 | 8.9 | 6.9 | 0.1 | 4.8 |
| | Ocp | 1.0 | 1.4 | 2.1 | 1.7 | 0.0 | 1.5 | 1.1 | 26.3 | 6.5 | 56.4 |
| 1900-2000 | Pro | 1.7 | 55.6 | 8.5 | 0.5 | 0.0 | 12.9 | 8.2 | 6.7 | 0.1 | 5.8 |
| | Ocp | 1.1 | 1.4 | 2.1 | 1.0 | 0.0 | 1.4 | 1.1 | 32.2 | 10.6 | 45.2 |
| 2000-2100 | Pro | 1.6 | 55.2 | 12.2 | 0.3 | 0.0 | 10.9 | 9.0 | 4.9 | 0.1 | 5.7 |
| | Ocp | 1.1 | 1.4 | 2.0 | 1.7 | 0.0 | 1.6 | 1.1 | 14.9 | 12.8 | 30.6 |
| 2100-2200 | Pro | 2.7 | 61.4 | 11.3 | 0.1 | 0.0 | 7.9 | 6.1 | 3.8 | 0.1 | 6.5 |
| | Ocp | 1.1 | 1.4 | 2.0 | 1.0 | 0.0 | 1.3 | 1.2 | 13.4 | 20.5 | 32.2 |
| 2200-2300 | Pro | 0.4 | 64.6 | 15.3 | 0.1 | 0.0 | 6.1 | 4.4 | 3.9 | 0.1 | 5.2 |
| | Ocp | 1.0 | 1.4 | 2.1 | 2.0 | 0.0 | 1.7 | 1.3 | 14.4 | 13.0 | 38.2 |
| 16 hours | Pro | 1.4 | 45.9 | 10.3 | 0.6 | 0.0 | 18.5 | 12.8 | 5.5 | 0.1 | 4.9 |
| | Ocp | 1.1 | 1.5 | 2.1 | 3.1 | 0.0 | 1.6 | 1.2 | 22.2 | 13.5 | 39.9 |

Legend

Pro. Proportion of vehicles in % (Sum may not add up to 100% due to figure rounding)
Ocp. Average occupancy of vehicles
M&H Medium and Heavy