

YEAR

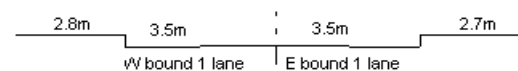
2008

LINK

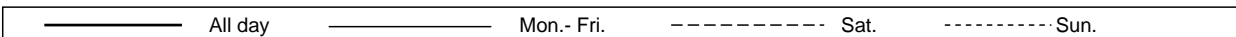
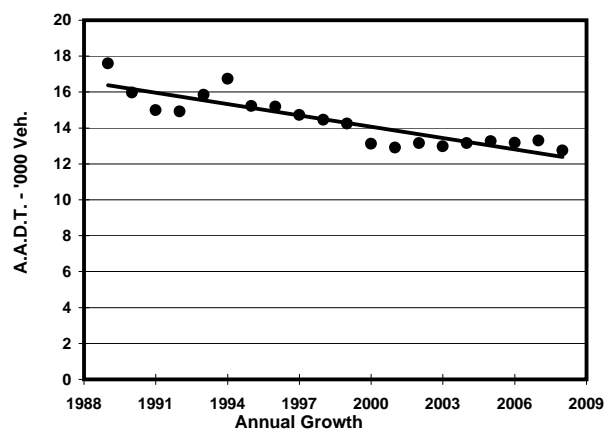
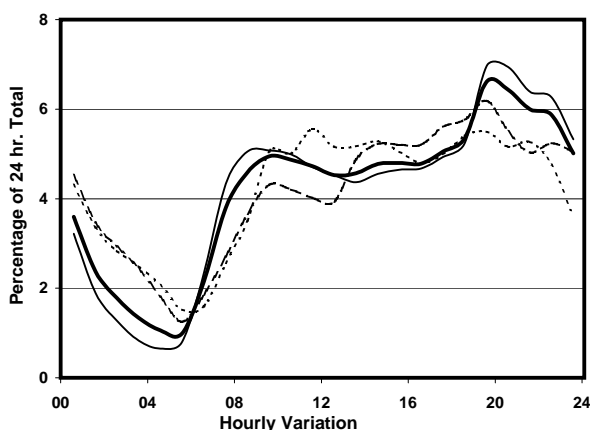
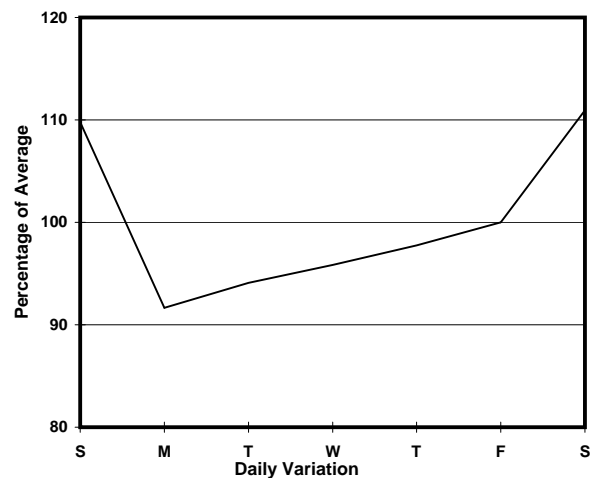
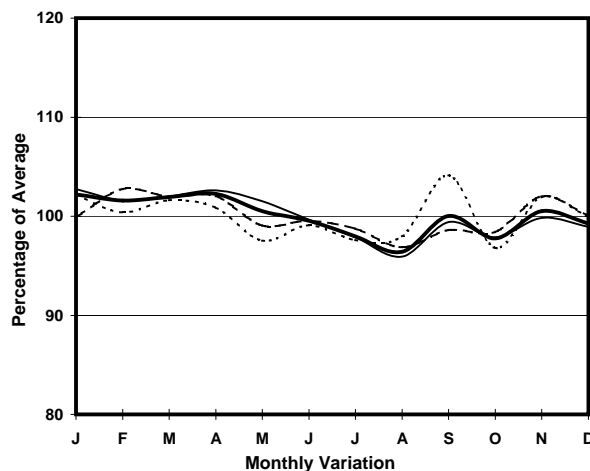
CAINE RD (from SEYMOUR RD to ABERDEEN ST)

CORE STATION  
ROAD NETWORK  
ROAD TYPE

1013  
MAJOR  
DISTRICT DISTRIBUTOR



### 1. TRAFFIC FLOW VARIATION AND GROWTH



### 2. TRAFFIC CHARACTERISTICS (BY DIRECTION)

Parameter	All - Day	Mon. - Fri.	Sat.	Sun.
<b>EAST BOUND</b>				
A.A.D.T.	8890	8780	9440	8550
R 12 / 24 - %	60.9	62.6	56.5	56.8
R 16 / 24 - %	82.6	85	76.6	76.4
AM Peak Hour	0900-1000	0900-1000	0900-1000	0900-1000
One-way flow at AM peak hour	490	500	500	400
T - % (AM)	-	-	-	-
PM Peak Hour	1800-1900	1800-1900	1800-1900	1800-1900
One-way flow at PM peak hour	510	520	500	460
T - % (PM)	-	-	-	-
Prop.of commercial vehicles - 16 hr.	-	-	-	-
<b>WEST BOUND</b>				
A.A.D.T.	3860	3380	4620	5380
R 12 / 24 - %	47.3	42.7	50.9	58.7
R 16 / 24 - %	79.7	80	76.7	81.1
AM Peak Hour	0900-1000	0700-0800	0700-0800	0900-1000
One-way flow at AM peak hour	140	140	110	310
T - % (AM)	-	-	-	-
PM Peak Hour	1700-1800	1600-1700	1700-1800	1800-1900
One-way flow at PM peak hour	180	130	310	300
T - % (PM)	-	-	-	-
Prop.of commercial vehicles - 16 hr.	-	-	-	-

### 3. OTHER INFORMATION AND COMMENT