

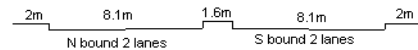
YEAR 2008

CORE STATION 1017

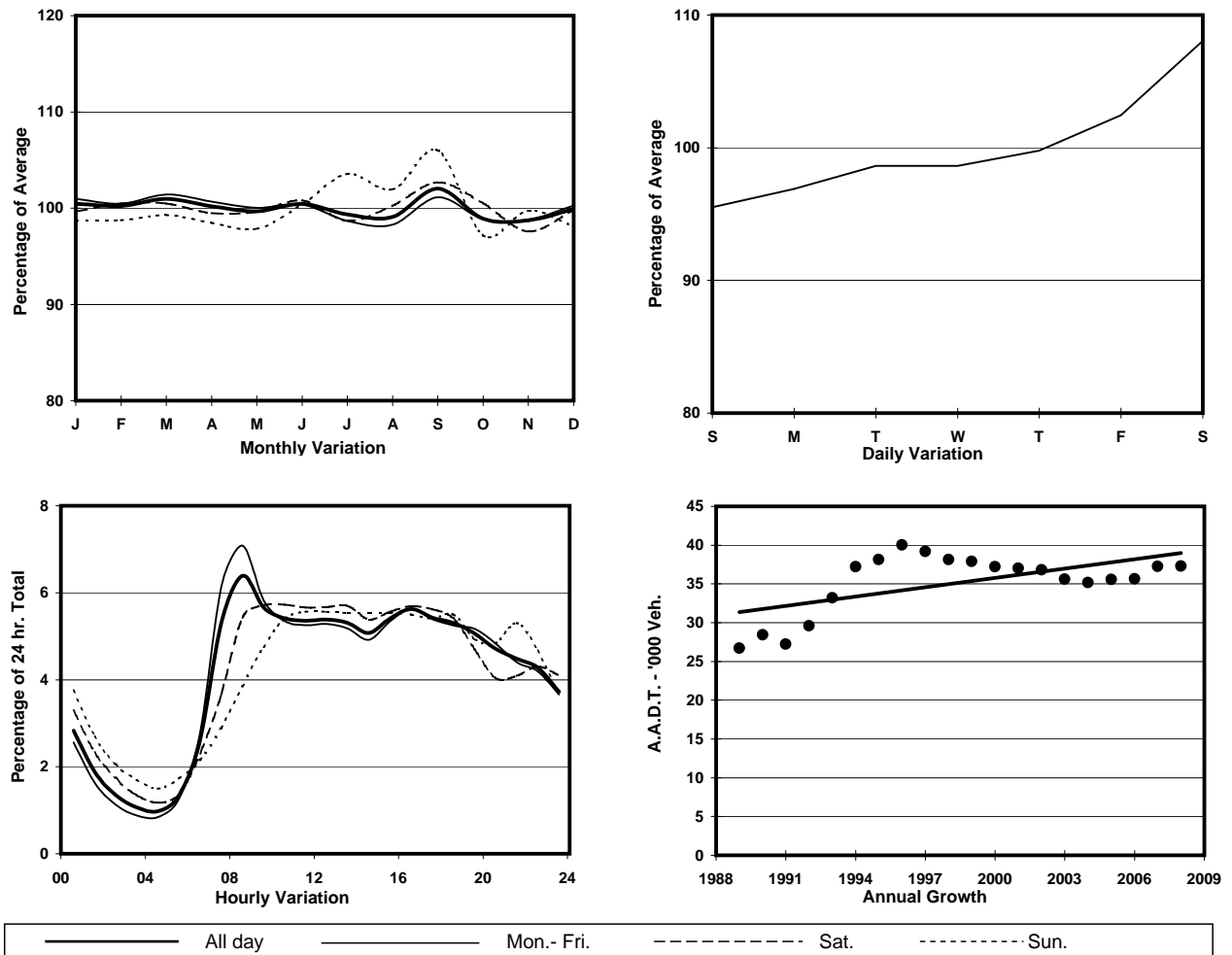
ROAD NETWORK MAJOR

ROAD TYPE DISTRICT DISTRIBUTOR

LINK AP LEI CHAU BRIDGE & AP LEI CHAU BRIDGE RD (from WONG CHUK HANG RD to AP LEI CHAU EST)



1. TRAFFIC FLOW VARIATION AND GROWTH



2. TRAFFIC CHARACTERISTICS (BY DIRECTION)

Parameter	All - Day	Mon. - Fri.	Sat.	Sun.
SOUTH BOUND				
A.A.D.T.	18620	18520	20160	17900
R 12 / 24 - %	63.4	64.3	63.2	59
R 16 / 24 - %	83.7	84.8	81.5	80.1
AM Peak Hour	0800-0900	0800-0900	0900-1000	0900-1000
One-way flow at AM peak hour	1020	1120	1040	760
T - % (AM)	-	-	-	-
PM Peak Hour	1600-1700	1600-1700	1600-1700	1600-1700
One-way flow at PM peak hour	1070	1070	1170	1010
T - % (PM)	-	-	-	-
Prop.of commercial vehicles - 16 hr.	-	-	-	-
NORTH BOUND				
A.A.D.T.	18660	18580	20210	17750
R 12 / 24 - %	67.9	69	67.2	63.1
R 16 / 24 - %	84.7	85.7	83.1	81.5
AM Peak Hour	0800-0900	0800-0900	0900-1000	0900-1000
One-way flow at AM peak hour	1360	1510	1270	940
T - % (AM)	-	-	-	-
PM Peak Hour	1700-1800	1600-1700	1700-1800	1800-1900
One-way flow at PM peak hour	1030	1020	1160	1020
T - % (PM)	-	-	-	-
Prop.of commercial vehicles - 16 hr.	-	-	-	-

3. OTHER INFORMATION AND COMMENT