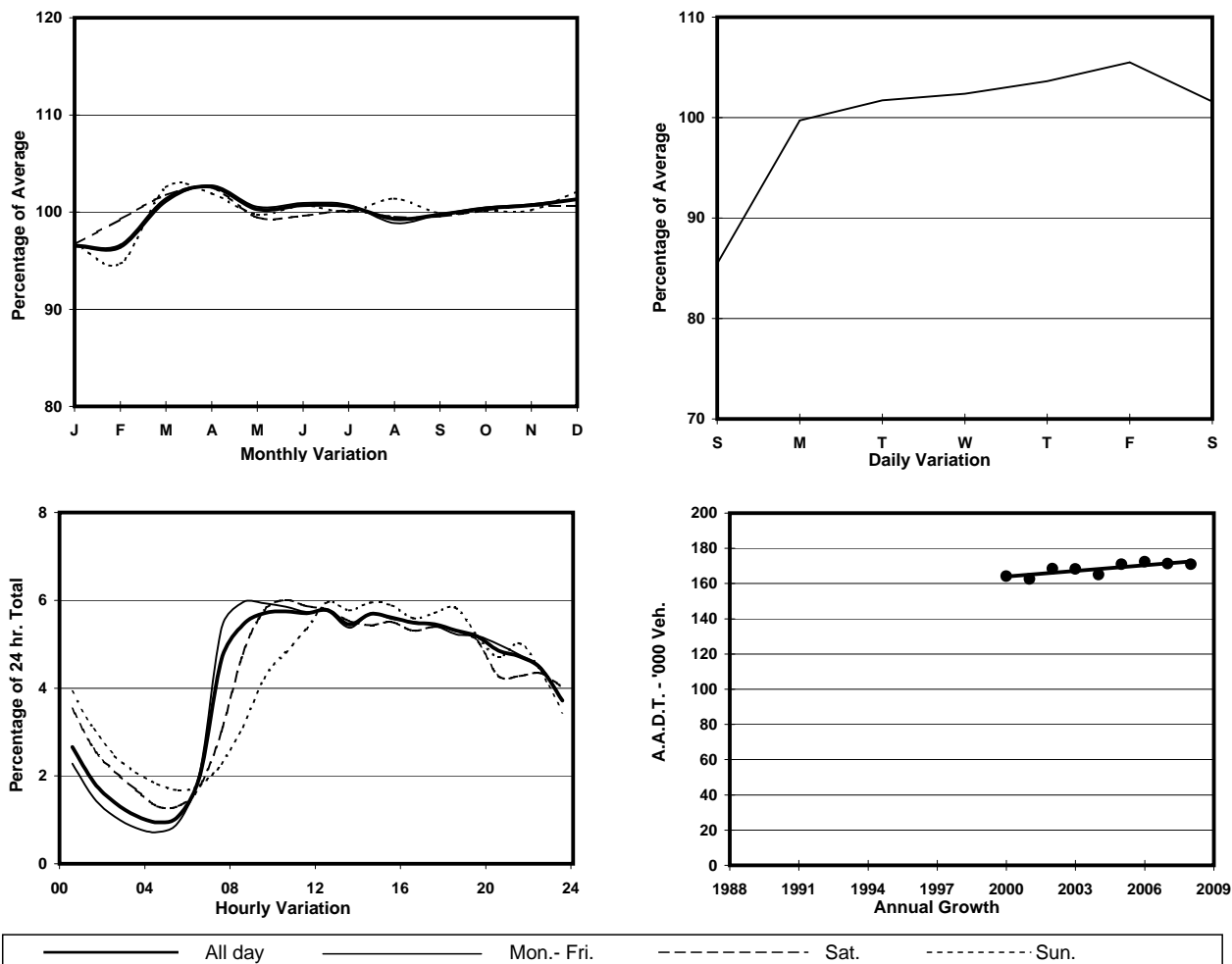


YEAR 2008  
CORE STATION 1028  
ROAD NETWORK MAJOR  
ROAD TYPE URBAN TRUNK ROAD

LINK GLOUCESTER RD (from ARSENAL ST to CROSS  
HARBOUR TUNNEL S. INT)

6.5m 15.8m 2.8m 19m 5.3m  
E bound 5 lanes W bound 5 lanes

## 1. TRAFFIC FLOW VARIATION AND GROWTH



## 2. TRAFFIC CHARACTERISTICS (BY DIRECTION)

Parameter	All - Day	Mon. - Fri.	Sat.	Sun.
<b>EAST BOUND</b>				
A.A.D.T.	79420	82890	78210	67660
R 12 / 24 - %	65.9	67.3	63.5	60
R 16 / 24 - %	85.6	87.4	81.3	79.7
AM Peak Hour	0900-1000	0900-1000	0900-1000	0900-1000
One-way flow at AM peak hour	4620	5080	4460	2720
T - % (AM)	-	-	-	-
PM Peak Hour	1600-1700	1600-1700	1700-1800	1700-1800
One-way flow at PM peak hour	4310	4490	4200	3930
T - % (PM)	-	-	-	-
Prop.of commercial vehicles - 16 hr.	-	-	-	-
<b>WEST BOUND</b>				
A.A.D.T.	91460	93800	96740	79480
R 12 / 24 - %	66.2	67.5	63.8	60.9
R 16 / 24 - %	84.9	86.3	81.9	79.8
AM Peak Hour	0900-1000	0800-0900	0900-1000	0900-1000
One-way flow at AM peak hour	5120	5650	5620	3500
T - % (AM)	-	-	-	-
PM Peak Hour	1700-1800	1700-1800	1700-1800	1800-1900
One-way flow at PM peak hour	5150	5320	5240	4820
T - % (PM)	-	-	-	-
Prop.of commercial vehicles - 16 hr.	-	-	-	-

## 3. OTHER INFORMATION AND COMMENT