

YEAR

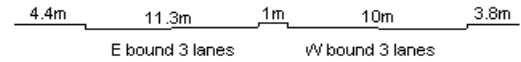
2008

LINK

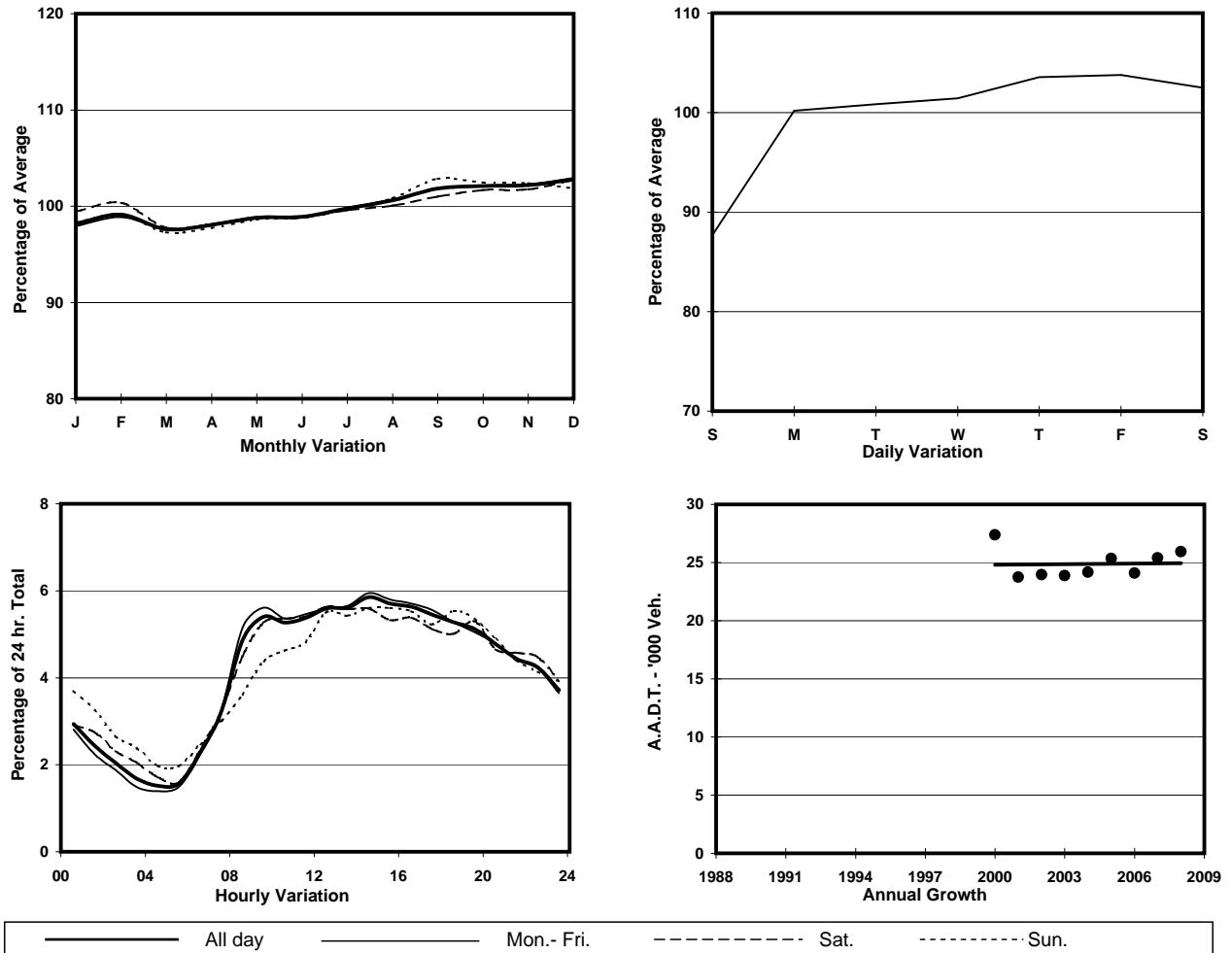
HENNESSY RD (from LUARD RD to FLEMING RD)

CORE STATION  
ROAD NETWORK  
ROAD TYPE

1029  
MAJOR  
PRIMARY DISTRIBUTOR



### 1. TRAFFIC FLOW VARIATION AND GROWTH



### 2. TRAFFIC CHARACTERISTICS (BY DIRECTION)

| Parameter                            | All - Day | Mon. - Fri. | Sat.      | Sun.      |
|--------------------------------------|-----------|-------------|-----------|-----------|
| <b>EAST BOUND</b>                    |           |             |           |           |
| A.A.D.T.                             | 14350     | 14740       | 14900     | 12530     |
| R 12 / 24 - %                        | 62.5      | 63.7        | 60.3      | 57.9      |
| R 16 / 24 - %                        | 80.9      | 82          | 79.1      | 76.3      |
| AM Peak Hour                         | 0900-1000 | 0900-1000   | 0900-1000 | 0900-1000 |
| One-way flow at AM peak hour         | 760       | 820         | 750       | 510       |
| T - % (AM)                           | -         | -           | -         | -         |
| PM Peak Hour                         | 1600-1700 | 1600-1700   | 1600-1700 | 1800-1900 |
| One-way flow at PM peak hour         | 810       | 840         | 800       | 710       |
| T - % (PM)                           | -         | -           | -         | -         |
| Prop.of commercial vehicles - 16 hr. | -         | -           | -         | -         |
| <b>WEST BOUND</b>                    |           |             |           |           |
| A.A.D.T.                             | 11580     | 11880       | 11860     | 10330     |
| R 12 / 24 - %                        | 64.2      | 65.2        | 62.8      | 60.1      |
| R 16 / 24 - %                        | 83        | 83.9        | 82.1      | 79.3      |
| AM Peak Hour                         | 0900-1000 | 0900-1000   | 0900-1000 | 0900-1000 |
| One-way flow at AM peak hour         | 650       | 680         | 660       | 490       |
| T - % (AM)                           | -         | -           | -         | -         |
| PM Peak Hour                         | 1600-1700 | 1700-1800   | 1700-1800 | 1600-1700 |
| One-way flow at PM peak hour         | 660       | 680         | 650       | 600       |
| T - % (PM)                           | -         | -           | -         | -         |
| Prop.of commercial vehicles - 16 hr. | -         | -           | -         | -         |

### 3. OTHER INFORMATION AND COMMENT