

YEAR

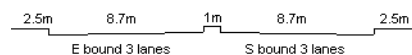
2008

LINK

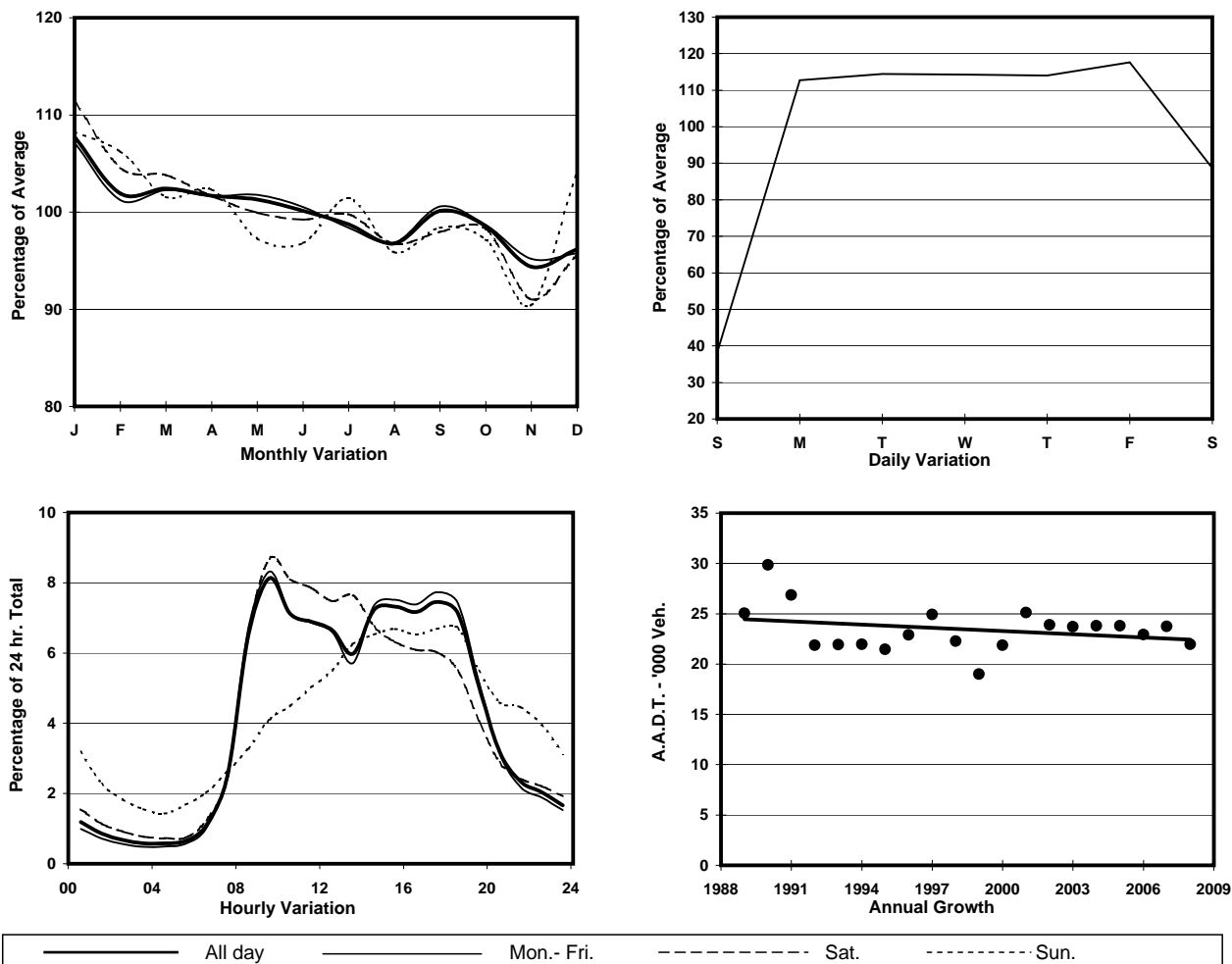
WAI YIP ST (from LAI YIP ST to HOI YUEN RD)

CORE STATION  
ROAD NETWORK  
ROAD TYPE

3020  
MAJOR  
DISTRICT DISTRIBUTOR



## 1. TRAFFIC FLOW VARIATION AND GROWTH



## 2. TRAFFIC CHARACTERISTICS (BY DIRECTION)

Parameter	All - Day	Mon. - Fri.	Sat.	Sun.
<b>EAST BOUND</b>				
A.A.D.T.	14830	17600	13530	5840
R 12 / 24 - %	82.1	83.3	80.8	66.3
R 16 / 24 - %	94	94.8	92.4	85.4
AM Peak Hour	0900-1000	0900-1000	0900-1000	0900-1000
One-way flow at AM peak hour	1340	1640	1290	250
T - % (AM)	-	-	-	-
PM Peak Hour	1700-1800	1700-1800	1700-1800	1800-1900
One-way flow at PM peak hour	1090	1330	820	410
T - % (PM)	-	-	-	-
Prop.of commercial vehicles - 16 hr.	-	-	-	-
<b>WEST BOUND</b>				
A.A.D.T.	7120	8440	6540	2860
R 12 / 24 - %	76	76.9	76.4	60.5
R 16 / 24 - %	90.1	91.3	88	77.9
AM Peak Hour	0900-1000	0900-1000	0900-1000	0900-1000
One-way flow at AM peak hour	450	530	460	110
T - % (AM)	-	-	-	-
PM Peak Hour	1700-1800	1800-1900	1600-1700	1700-1800
One-way flow at PM peak hour	550	690	420	190
T - % (PM)	-	-	-	-
Prop.of commercial vehicles - 16 hr.	-	-	-	-

## 3. OTHER INFORMATION AND COMMENT