

YEAR

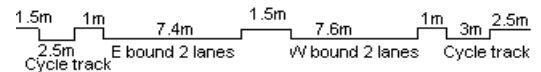
2008

LINK

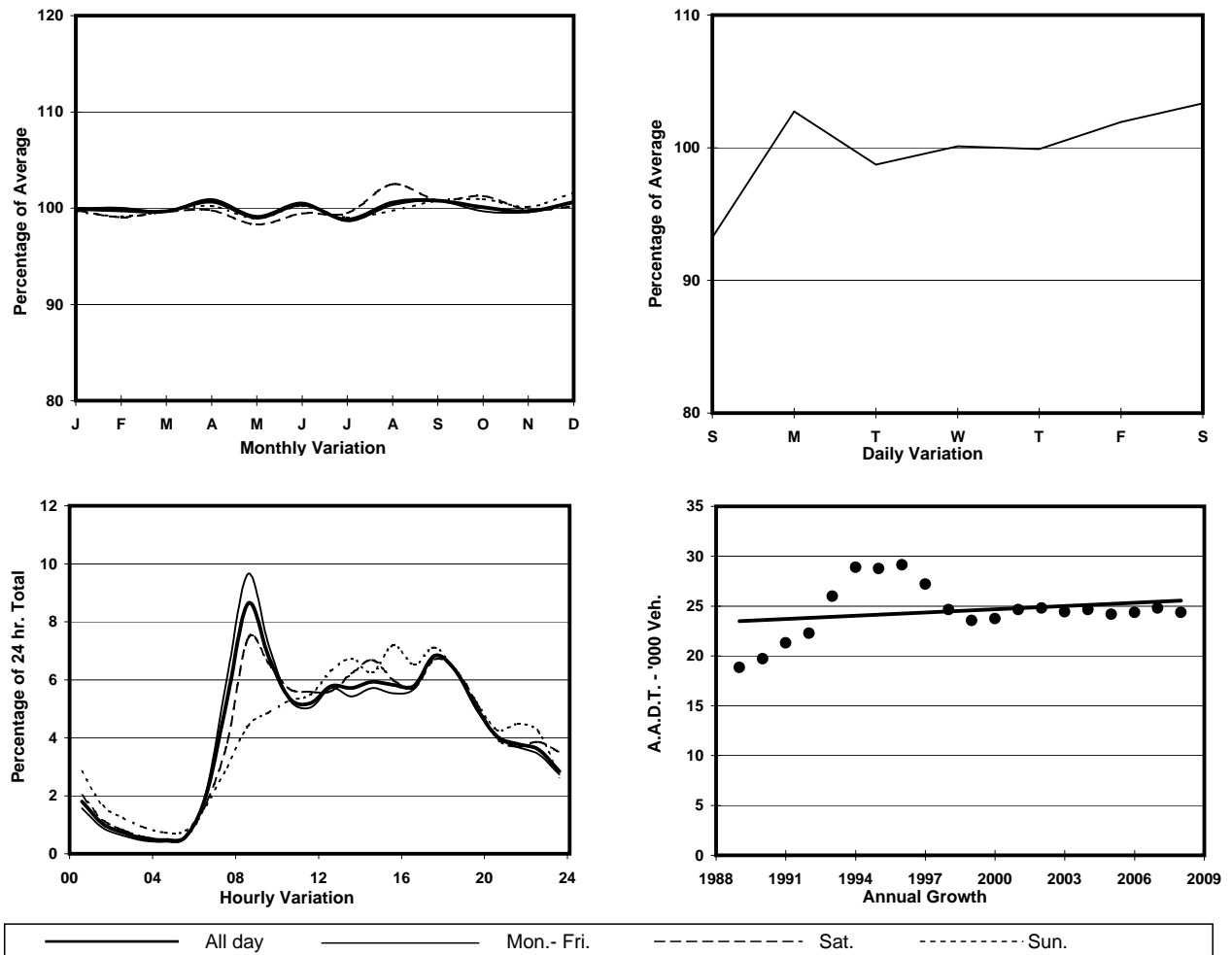
TING KOK RD (from NAM WAN RD to DAI KWAI ST)

CORE STATION  
ROAD NETWORK  
ROAD TYPE

5006  
MAJOR  
PRIMARY DISTRIBUTOR



### 1. TRAFFIC FLOW VARIATION AND GROWTH



### 2. TRAFFIC CHARACTERISTICS (BY DIRECTION)

Parameter	All - Day	Mon. - Fri.	Sat.	Sun.
<b>EAST BOUND</b>				
A.A.D.T.	11260	11320	11720	10820
R 12 / 24 - %	69.2	69.7	69.1	67.1
R 16 / 24 - %	89.1	89.8	88.2	86.2
AM Peak Hour	0800-0900	0800-0900	0800-0900	0900-1000
One-way flow at AM peak hour	920	1050	760	480
T - % (AM)	-	-	-	-
PM Peak Hour	1700-1800	1800-1900	1700-1800	1600-1700
One-way flow at PM peak hour	720	760	760	670
T - % (PM)	-	-	-	-
Prop.of commercial vehicles - 16 hr.	-	-	-	-
<b>WEST BOUND</b>				
A.A.D.T.	13110	13300	13570	11990
R 12 / 24 - %	77.1	78.6	75.1	71.4
R 16 / 24 - %	90.7	91.3	89.9	88.8
AM Peak Hour	0800-0900	0800-0900	0800-0900	0900-1000
One-way flow at AM peak hour	1190	1330	1120	630
T - % (AM)	-	-	-	-
PM Peak Hour	1700-1800	1700-1800	1700-1800	1700-1800
One-way flow at PM peak hour	940	940	930	960
T - % (PM)	-	-	-	-
Prop.of commercial vehicles - 16 hr.	-	-	-	-

### 3. OTHER INFORMATION AND COMMENT