

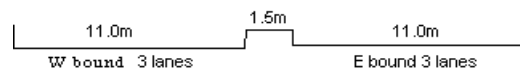
YEAR 2008

CORE STATION 5031

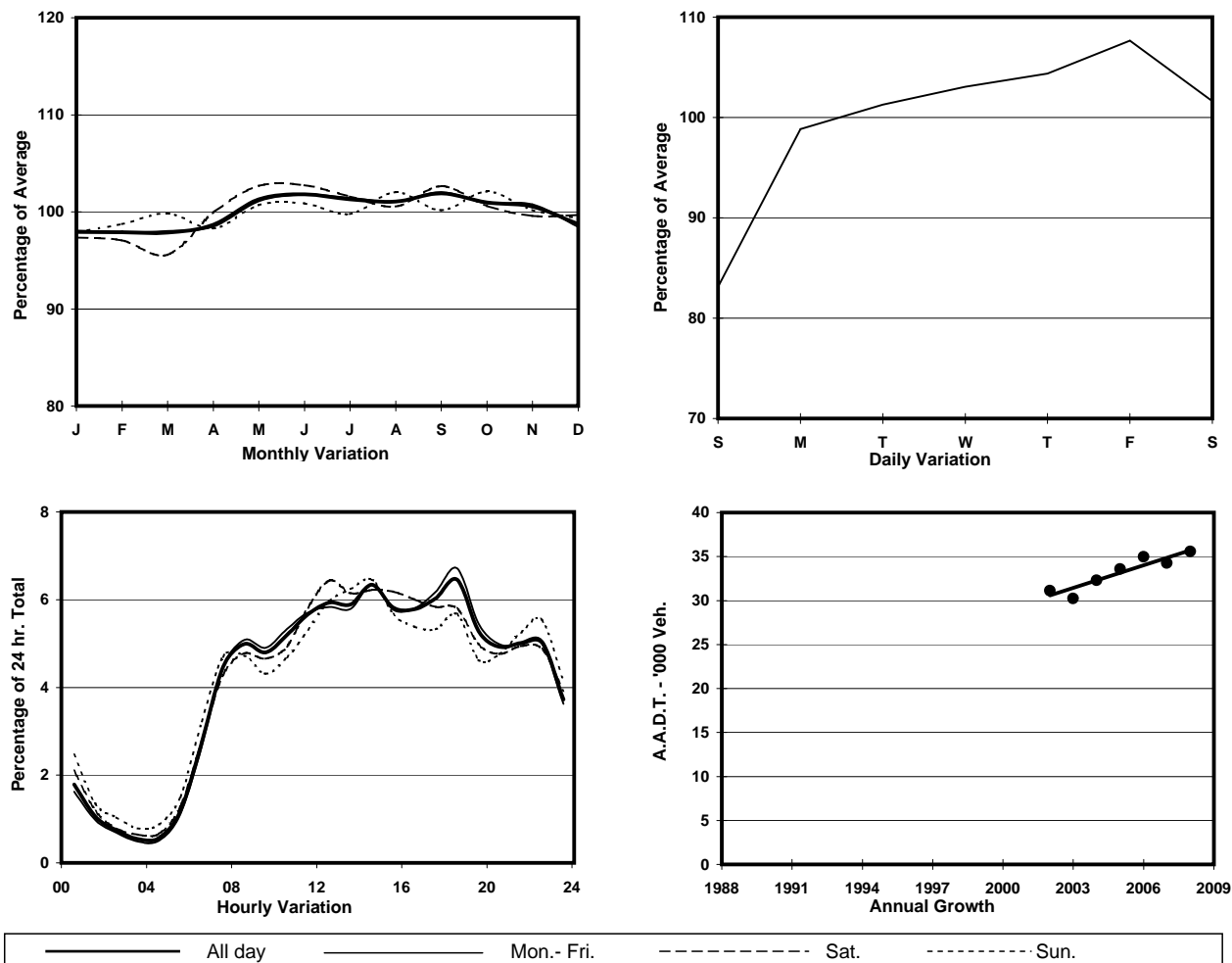
ROAD NETWORK MAJOR

ROAD TYPE EXPRESSWAY

LINK NORTH LANTAU HIGHWAY (from TUNG CHUNG
EASTERN INT to WESTERN END AT CHEK LAP KOK)



1. TRAFFIC FLOW VARIATION AND GROWTH



2. TRAFFIC CHARACTERISTICS (BY DIRECTION)

Parameter	All - Day	Mon. - Fri.	Sat.	Sun.
EAST BOUND				
A.A.D.T.	17650	18260	18250	15080
R 12 / 24 - %	64.7	65.1	64.5	62.2
R 16 / 24 - %	86.1	86.9	84.8	83.2
AM Peak Hour	0800-0900	0800-0900	0900-1000	0800-0900
One-way flow at AM peak hour	690	700	740	660
T - % (AM)	-	-	-	-
PM Peak Hour	1800-1900	1800-1900	1800-1900	1800-1900
One-way flow at PM peak hour	1300	1410	1190	940
T - % (PM)	-	-	-	-
Prop.of commercial vehicles - 16 hr.	-	-	-	-
WEST BOUND				
A.A.D.T.	17930	18740	18260	14760
R 12 / 24 - %	70.1	70.6	69.7	66.8
R 16 / 24 - %	89.1	89.7	88.5	86.2
AM Peak Hour	0800-0900	0800-0900	0800-0900	0700-0800
One-way flow at AM peak hour	1090	1180	1030	850
T - % (AM)	-	-	-	-
PM Peak Hour	1600-1700	1800-1900	1600-1700	1700-1800
One-way flow at PM peak hour	1020	1070	1080	810
T - % (PM)	-	-	-	-
Prop.of commercial vehicles - 16 hr.	-	-	-	-

3. OTHER INFORMATION AND COMMENT