

YEAR 2008

COVERAGE (B) STATION 2203

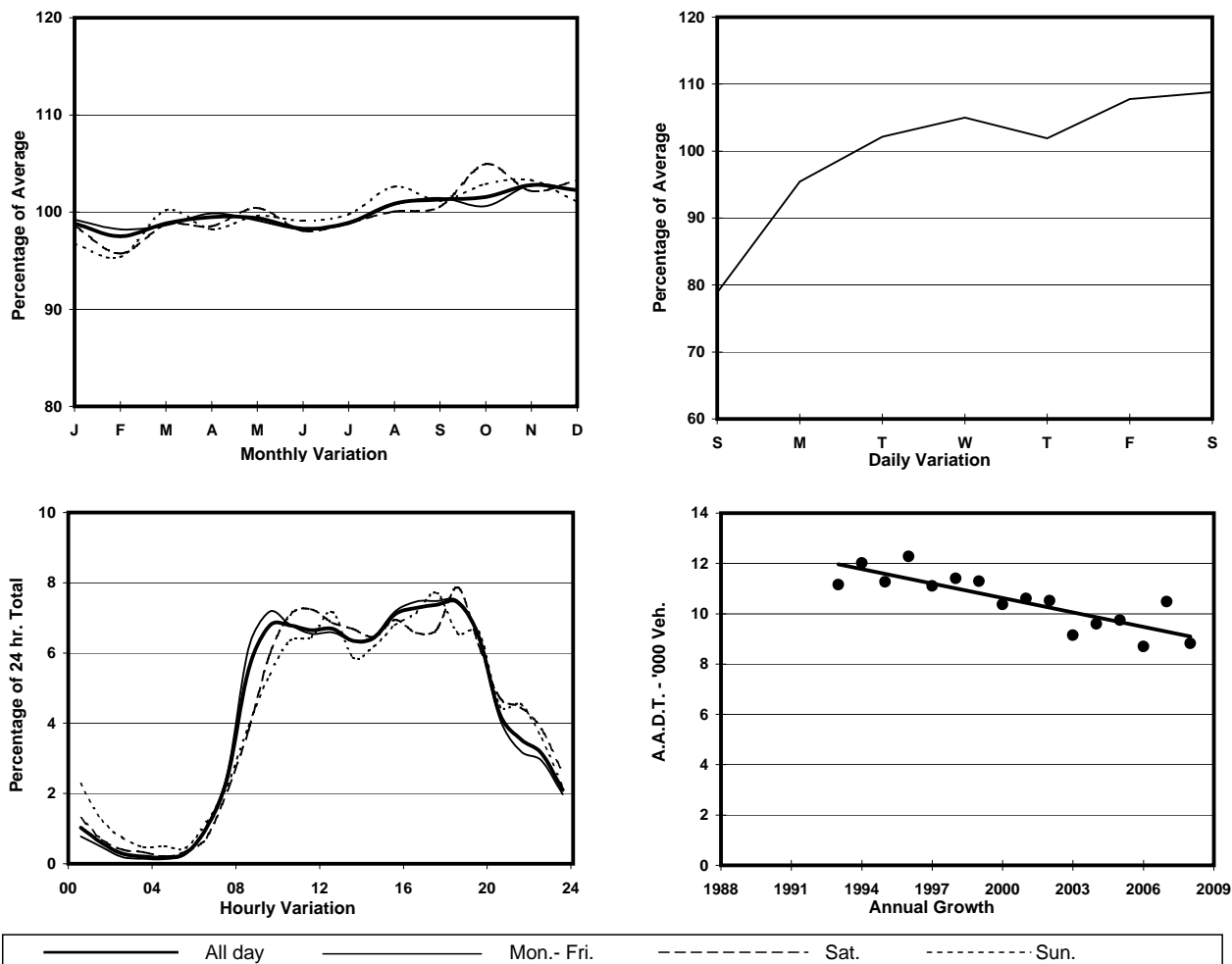
ROAD NETWORK MAJOR

ROAD TYPE DISTRICT DISTRIBUTOR

LINK STUBBS RD (from WAN CHAI GAP to WONG NAI CHUNG GAP RD)



1. TRAFFIC FLOW VARIATION AND GROWTH



2. TRAFFIC CHARACTERISTICS (BY DIRECTION)

Parameter	All - Day	Mon. - Fri.	Sat.	Sun.
SOUTH BOUND				
A.A.D.T.	4770	4940	5330	3750
R 12 / 24 - %	76.8	77.9	75.6	71.8
R 16 / 24 - %	94.4	95.2	93.5	90.8
AM Peak Hour	0900-1000	0900-1000	0900-1000	0900-1000
One-way flow at AM peak hour	290	310	300	190
T - % (AM)	-	2	-	-
PM Peak Hour	1700-1800	1700-1800	1800-1900	1700-1800
One-way flow at PM peak hour	370	400	410	280
T - % (PM)	-	10.5	-	-
Prop.of commercial vehicles - 16 hr.	-	11.2	-	-
NORTH BOUND				
A.A.D.T.	4050	4200	4380	3280
R 12 / 24 - %	76.9	78.7	72.5	71.7
R 16 / 24 - %	94.1	94.9	93.4	91.2
AM Peak Hour	0900-1000	0900-1000	0900-1000	0900-1000
One-way flow at AM peak hour	310	350	280	190
T - % (AM)	-	12.6	-	-
PM Peak Hour	1800-1900	1800-1900	1800-1900	1700-1800
One-way flow at PM peak hour	290	300	350	270
T - % (PM)	-	16.3	-	-
Prop.of commercial vehicles - 16 hr.	-	12	-	-

3. OTHER INFORMATION AND COMMENT

4. Vehicle classification and occupancy - Monday to Friday

Time		Class of vehicle									
		Motor Cycle	Private Car	Taxi	Private LB	PLB	Goods veh.		Non Fr. Bus	Fr. Bus	
							Light	M & H		SD	DD
0700-0800	Pro	3.6	50.0	30.9	4.5	0.0	1.8	2.7	4.5	0.0	1.8
	Ocp	1.0	1.7	1.6	4.2	0.0	3.0	1.0	5.2	0.0	24.3
0800-0900	Pro	0.4	62.9	16.7	1.6	0.0	7.6	2.8	7.2	0.0	0.9
	Ocp	1.0	1.5	1.6	4.8	0.0	2.1	1.3	7.7	0.0	34.3
0900-1000	Pro	1.0	59.0	17.6	1.9	0.0	12.9	2.4	4.3	0.0	1.0
	Ocp	1.5	1.6	1.6	9.0	0.0	1.8	2.0	13.3	0.0	28.9
1000-1100	Pro	0.5	44.8	21.2	3.3	0.0	17.9	1.9	9.4	0.0	0.9
	Ocp	1.0	1.5	1.7	2.9	0.0	1.7	1.0	8.0	0.0	15.0
1100-1200	Pro	1.9	45.4	22.7	1.9	0.0	15.8	3.8	6.9	0.0	1.6
	Ocp	1.0	1.5	1.6	2.7	0.0	2.4	1.3	12.9	0.0	16.4
1200-1300	Pro	1.1	48.0	21.6	1.1	0.0	16.9	3.7	6.3	0.0	1.3
	Ocp	1.0	1.5	1.8	4.5	0.0	1.7	1.6	27.9	0.0	17.3
1300-1400	Pro	2.5	34.1	27.9	1.2	0.0	18.0	3.1	11.8	0.0	1.5
	Ocp	1.0	1.5	1.6	4.0	0.0	2.1	1.4	19.5	0.0	22.5
1400-1500	Pro	0.5	48.9	26.5	1.5	0.0	13.2	2.5	5.6	0.0	1.3
	Ocp	1.0	1.6	1.5	3.7	0.0	1.8	1.6	7.3	0.0	31.7
1500-1600	Pro	0.9	50.2	26.8	1.7	0.0	11.7	4.3	3.5	0.0	1.0
	Ocp	1.5	1.6	1.9	5.8	0.0	1.7	1.1	12.8	0.0	31.1
1600-1700	Pro	0.8	54.5	23.4	1.6	0.0	13.7	1.6	3.2	0.0	1.0
	Ocp	1.0	1.7	1.7	2.8	0.0	1.8	1.5	21.8	0.0	42.6
1700-1800 Peak hour	Pro	3.7	54.4	23.2	0.5	0.0	7.0	0.5	9.8	0.0	1.0
	Ocp	1.0	1.7	1.9	1.0	0.0	2.7	2.0	19.9	0.0	38.3
1800-1900	Pro	1.6	55.1	28.3	0.4	0.0	2.0	0.0	11.7	0.0	0.8
	Ocp	1.0	1.8	1.8	4.0	0.0	1.6	0.0	21.1	0.0	53.1
1900-2000	Pro	1.0	57.7	22.6	0.0	0.0	2.0	0.0	15.6	0.0	1.1
	Ocp	1.0	1.6	1.7	0.0	0.0	1.5	0.0	17.6	0.0	35.7
2000-2100	Pro	4.0	65.8	16.0	0.0	0.0	1.0	2.0	9.0	0.0	2.2
	Ocp	1.5	1.3	1.5	0.0	0.0	2.0	1.0	21.4	0.0	19.6
2100-2200	Pro	0.0	54.3	18.1	0.0	0.0	1.0	0.0	24.1	0.0	2.5
	Ocp	0.0	1.3	1.7	0.0	0.0	1.0	0.0	9.6	0.0	18.3
2200-2300	Pro	0.0	64.9	20.1	1.5	0.0	1.5	0.0	9.3	0.0	2.7
	Ocp	0.0	1.6	2.0	3.0	0.0	3.0	0.0	14.7	0.0	17.0
16 hours	Pro	1.4	52.8	22.9	1.4	0.0	9.9	2.0	8.3	0.0	1.2
	Ocp	1.1	1.6	1.7	4.2	0.0	1.9	1.4	15.5	0.0	27.8

Legend

Pro. Proportion of vehicles in % (Sum may not add up to 100% due to figure rounding)
Ocp. Average occupancy of vehicles
M&H Medium and Heavy