

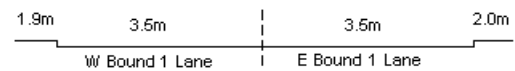
YEAR 2008

COVERAGE (B) STATION 2206

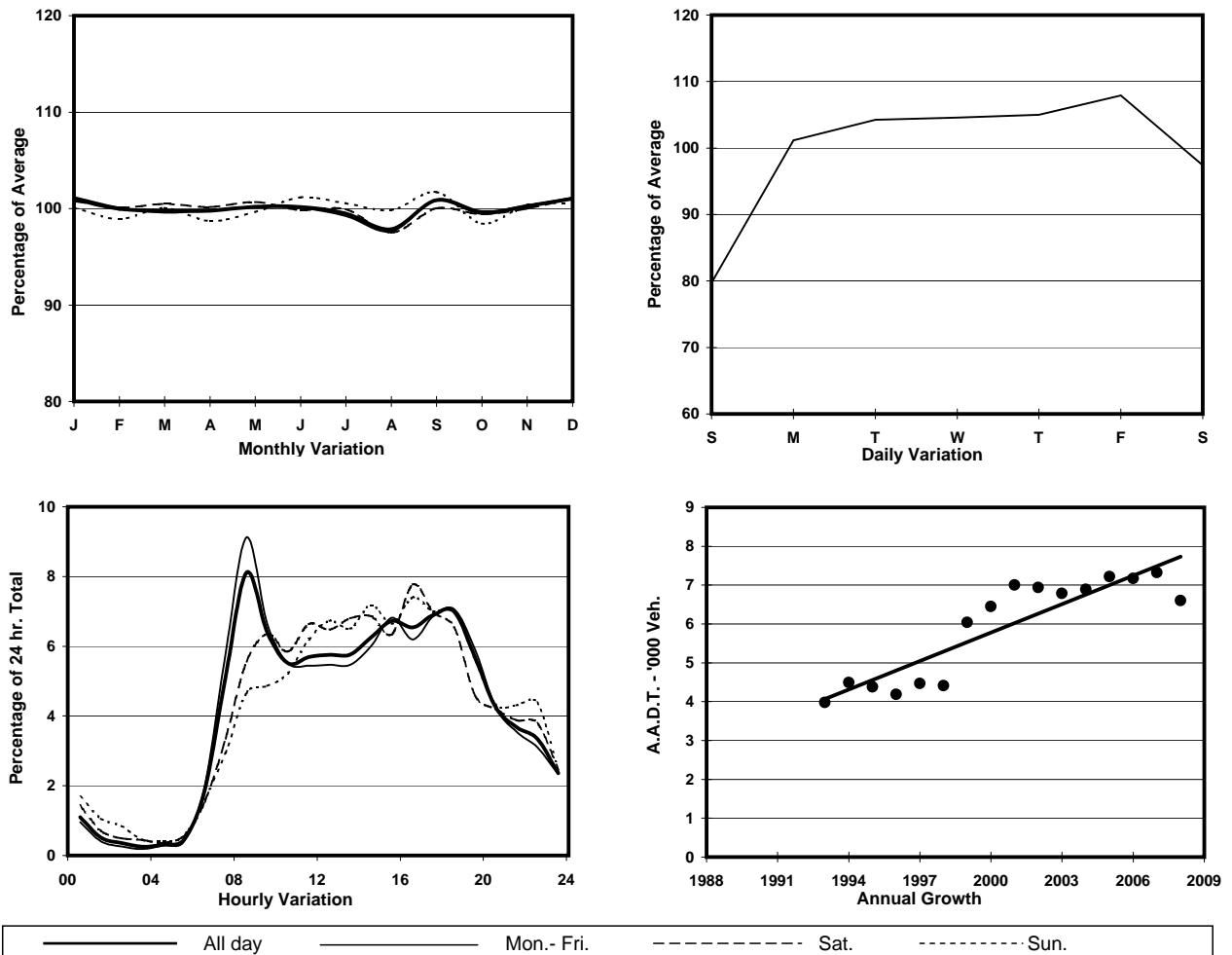
ROAD NETWORK MAJOR

ROAD TYPE DISTRICT DISTRIBUTOR

LINK BELCHER'S ST & VICTORIA RD (from SMITHFIELD RD to MOUNT DAVIS RD)



## 1. TRAFFIC FLOW VARIATION AND GROWTH



## 2. TRAFFIC CHARACTERISTICS (BY DIRECTION)

Parameter	All - Day	Mon. - Fri.	Sat.	Sun.
<b>EAST BOUND</b>				
A.A.D.T.	3260	3460	3160	2600
R 12 / 24 - %	76.8	77.8	76.9	71
R 16 / 24 - %	93	93.4	92.1	91.7
AM Peak Hour	0800-0900	0800-0900	0900-1000	0800-0900
One-way flow at AM peak hour	310	380	210	130
T - % (AM)	-	12.1	-	-
PM Peak Hour	1800-1900	1700-1800	1800-1900	1800-1900
One-way flow at PM peak hour	240	250	240	200
T - % (PM)	-	10.9	-	-
Prop.of commercial vehicles - 16 hr.	-	13.8	-	-
<b>WEST BOUND</b>				
A.A.D.T.	3340	3510	3330	2720
R 12 / 24 - %	74.8	75	74.3	73.7
R 16 / 24 - %	92.5	93	91.9	90.2
AM Peak Hour	0800-0900	0800-0900	0900-1000	0900-1000
One-way flow at AM peak hour	230	260	200	130
T - % (AM)	-	13.9	-	-
PM Peak Hour	1800-1900	1800-1900	1600-1700	1600-1700
One-way flow at PM peak hour	230	250	270	210
T - % (PM)	-	7.9	-	-
Prop.of commercial vehicles - 16 hr.	-	11.4	-	-

## 3. OTHER INFORMATION AND COMMENT

**4. Vehicle classification and occupancy - Monday to Friday**

Time		Class of vehicle									
		Motor Cycle	Private Car	Taxi	Private LB	PLB	Goods veh.		Non Fr. Bus	Fr. Bus	
							Light	M & H		SD	DD
0700-0800	Pro	5.0	25.0	17.5	2.5	20.0	7.5	7.5	6.3	4.1	4.7
	Ocp	1.3	1.6	2.0	9.0	11.7	1.7	1.5	35.6	25.2	20.7
0800-0900 Peak hour	Pro	2.8	52.4	6.7	6.1	8.4	10.6	3.3	5.6	1.4	2.7
	Ocp	1.0	1.3	2.2	6.2	15.2	1.7	1.5	25.1	26.2	14.3
0900-1000	Pro	2.8	42.4	6.5	1.8	12.0	20.3	4.6	2.8	2.8	4.1
	Ocp	1.3	1.5	2.4	4.0	14.4	1.8	1.6	13.0	20.9	4.7
1000-1100	Pro	3.3	28.2	14.1	1.1	14.1	27.1	4.3	1.1	3.3	3.5
	Ocp	1.0	1.7	1.7	1.0	11.4	1.6	1.8	8.0	12.6	7.5
1100-1200	Pro	1.1	24.5	11.7	6.4	13.9	30.9	3.2	2.1	3.2	2.9
	Ocp	1.0	1.8	2.5	2.7	11.2	1.6	2.0	21.0	15.0	6.4
1200-1300	Pro	1.7	30.5	12.7	4.2	14.4	25.4	3.4	2.5	2.5	2.5
	Ocp	1.0	2.0	2.0	3.6	12.6	1.8	1.0	7.3	12.1	6.1
1300-1400	Pro	4.7	24.2	15.9	0.9	12.1	28.0	6.5	1.9	2.6	3.3
	Ocp	1.0	1.7	1.8	2.0	14.2	1.6	1.3	1.5	16.8	7.5
1400-1500	Pro	3.4	29.3	14.7	0.9	12.9	25.9	4.3	3.4	2.6	2.6
	Ocp	1.3	1.5	2.0	1.0	9.3	1.7	1.8	1.3	12.4	4.0
1500-1600	Pro	1.7	37.3	20.7	1.7	13.3	14.1	2.5	3.3	2.5	3.1
	Ocp	1.0	1.7	2.0	3.5	9.2	1.4	1.7	4.5	15.9	7.9
1600-1700	Pro	1.9	34.0	14.2	6.6	12.3	21.7	0.0	3.8	1.9	3.8
	Ocp	1.0	1.6	1.6	2.1	11.1	1.7	0.0	4.8	12.9	11.7
1700-1800	Pro	2.3	36.7	18.8	7.0	11.7	12.5	3.1	2.3	2.7	2.7
	Ocp	1.7	2.0	2.3	2.7	13.3	1.8	1.8	23.0	20.1	11.8
1800-1900	Pro	5.5	48.1	11.8	1.6	10.3	10.3	3.2	3.9	2.4	3.0
	Ocp	1.0	1.4	1.9	4.5	14.9	1.5	2.0	18.2	26.8	11.9
1900-2000	Pro	1.7	40.2	29.7	0.9	11.4	6.1	0.0	4.4	2.4	3.3
	Ocp	1.0	1.4	1.7	5.0	11.0	2.1	0.0	14.0	18.0	8.6
2000-2100	Pro	7.1	40.0	21.2	3.5	15.3	0.0	2.4	2.4	3.8	4.4
	Ocp	1.2	1.3	1.3	8.3	9.0	0.0	1.0	22.5	10.5	3.5
2100-2200	Pro	7.5	28.3	15.1	0.0	20.8	13.2	1.9	1.9	4.7	6.6
	Ocp	1.0	1.2	1.6	0.0	7.3	1.3	1.0	2.0	11.1	1.9
2200-2300	Pro	6.0	43.0	21.5	0.0	16.7	2.4	3.6	0.0	3.3	3.6
	Ocp	1.2	1.6	1.9	0.0	6.4	2.0	1.3	0.0	8.8	2.3
16 hours	Pro	3.4	36.5	15.4	3.1	13.0	16.1	3.3	3.2	2.7	3.4
	Ocp	1.1	1.6	1.9	4.1	11.4	1.7	1.5	16.0	16.7	8.5

**Legend**

**Pro.** Proportion of vehicles in % (Sum may not add up to 100% due to figure rounding)  
**Ocp.** Average occupancy of vehicles  
**M&H** Medium and Heavy