

YEAR

2008

LINK CONNAUGHT RD C (from CLEVERLY ST to GILMAN ST)

COVERAGE (B) STATION

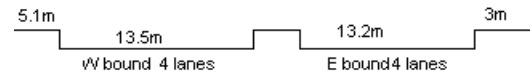
2207

ROAD NETWORK

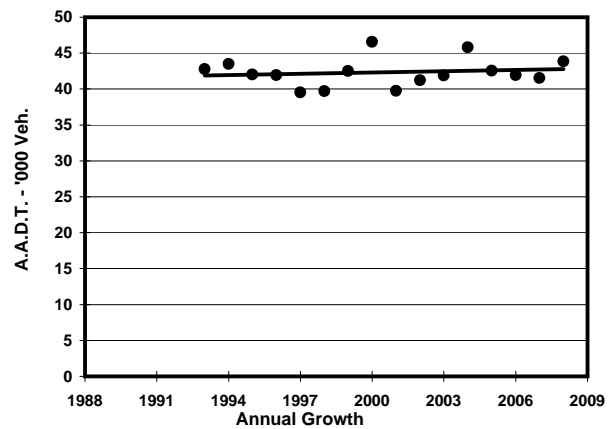
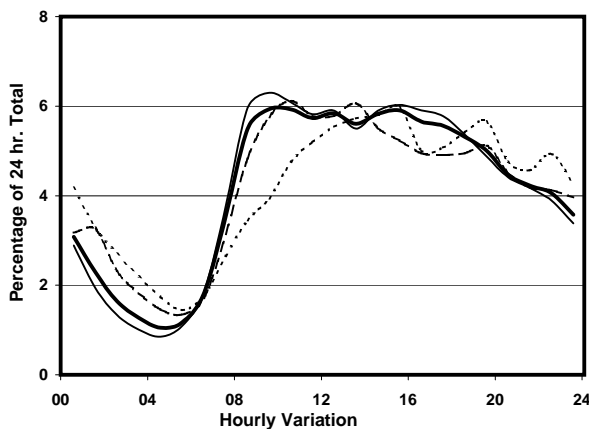
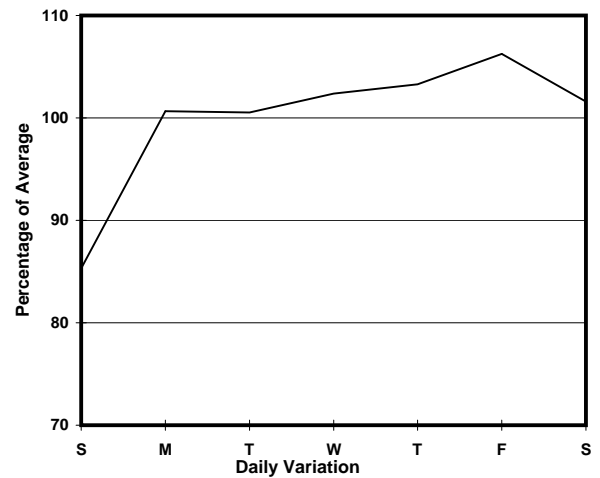
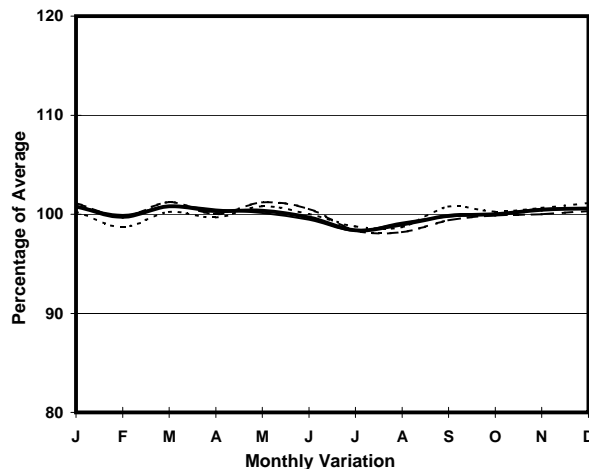
MAJOR

ROAD TYPE

PRIMARY DISTRIBUTOR



1. TRAFFIC FLOW VARIATION AND GROWTH



2. TRAFFIC CHARACTERISTICS (BY DIRECTION)

Parameter	All - Day	Mon. - Fri.	Sat.	Sun.
EAST BOUND				
A.A.D.T.	27050	28030	27730	22960
R 12 / 24 - %	63.8	65.9	60.6	54.8
R 16 / 24 - %	82.5	84.4	78.7	75.1
AM Peak Hour	0900-1000	0800-0900	0900-1000	0900-1000
One-way flow at AM peak hour	1530	1720	1510	850
T - % (AM)	-	34.3	-	-
PM Peak Hour	1600-1700	1600-1700	1800-1900	1800-1900
One-way flow at PM peak hour	1470	1570	1370	1180
T - % (PM)	-	14.7	-	-
Prop.of commercial vehicles - 16 hr.	-	16.2	-	-
WEST BOUND				
A.A.D.T.	16820	17340	17200	14770
R 12 / 24 - %	70.5	72.2	66.9	64.3
R 16 / 24 - %	86.7	87.6	84.7	83.6
AM Peak Hour	0900-1000	0900-1000	0900-1000	0900-1000
One-way flow at AM peak hour	1080	1170	1080	640
T - % (AM)	-	13.8	-	-
PM Peak Hour	1600-1700	1600-1700	1700-1800	1800-1900
One-way flow at PM peak hour	1010	1110	880	870
T - % (PM)	-	11.7	-	-
Prop.of commercial vehicles - 16 hr.	-	10.7	-	-

3. OTHER INFORMATION AND COMMENT

4. Vehicle classification and occupancy - Monday to Friday

Time		Class of vehicle									
		Motor Cycle	Private Car	Taxi	Private LB	PLB	Goods veh.		Non Fr. Bus	Fr. Bus	
							Light	M & H		SD	DD
0700-0800	Pro	1.3	7.8	43.9	0.5	6.3	17.0	1.8	6.0	0.7	14.6
	Ocp	1.0	1.2	1.9	1.0	9.5	1.3	1.3	12.5	9.6	30.3
0800-0900	Pro	2.3	17.6	39.3	0.8	1.8	11.5	1.3	10.2	0.4	14.7
	Ocp	1.1	1.3	1.9	3.2	13.2	1.6	1.4	26.8	14.3	38.9
0900-1000 Peak hour	Pro	2.0	22.0	43.8	1.0	2.2	10.9	2.5	3.9	0.3	11.2
	Ocp	1.0	1.4	1.9	3.6	9.2	1.6	1.5	16.5	11.1	19.9
1000-1100	Pro	1.6	21.0	41.6	0.5	2.8	21.2	1.4	1.4	0.3	8.2
	Ocp	1.2	1.4	1.9	1.3	8.3	1.8	1.6	9.2	4.2	17.1
1100-1200	Pro	1.9	22.9	41.6	1.0	2.3	19.9	1.9	1.0	0.4	7.2
	Ocp	1.0	1.5	2.0	2.3	5.9	1.6	1.9	16.6	3.0	16.9
1200-1300	Pro	2.7	24.4	42.2	1.8	2.1	16.3	1.3	1.6	0.2	7.2
	Ocp	1.0	1.5	1.8	3.4	7.7	1.7	1.6	17.5	5.4	13.4
1300-1400	Pro	1.6	23.3	45.2	0.8	2.9	16.3	0.6	1.1	0.2	8.0
	Ocp	1.0	1.6	2.0	2.0	7.2	1.7	1.0	13.4	9.0	13.2
1400-1500	Pro	1.5	23.5	45.4	1.1	2.9	15.3	2.0	0.8	0.3	7.5
	Ocp	1.0	1.4	2.2	3.1	9.5	1.7	1.6	16.2	6.4	13.5
1500-1600	Pro	2.0	28.9	34.8	1.5	2.3	19.6	2.5	0.6	0.2	7.6
	Ocp	1.0	1.6	2.0	2.0	7.8	1.8	1.6	16.5	8.3	13.2
1600-1700	Pro	2.1	30.5	34.5	0.9	3.1	15.5	1.8	1.8	0.7	9.1
	Ocp	1.0	1.5	2.1	2.3	5.5	1.7	1.5	12.3	2.1	12.7
1700-1800	Pro	2.6	34.4	38.5	1.0	1.6	8.9	1.0	1.0	0.5	10.4
	Ocp	1.1	1.5	2.0	2.9	9.6	1.7	1.3	10.4	3.0	14.0
1800-1900	Pro	4.7	39.3	31.8	0.9	1.8	4.9	0.2	3.2	0.9	12.4
	Ocp	1.0	1.4	2.3	2.2	11.3	1.7	1.0	26.1	3.1	20.0
1900-2000	Pro	3.0	32.1	41.6	0.4	2.8	5.3	0.2	1.8	0.8	12.0
	Ocp	1.1	1.5	2.3	5.5	7.6	2.2	1.0	16.7	2.5	15.1
2000-2100	Pro	1.4	24.5	52.9	0.4	3.7	4.5	0.4	0.6	0.6	11.1
	Ocp	1.0	1.6	1.8	3.0	5.8	1.6	1.5	8.3	2.5	9.8
2100-2200	Pro	2.2	23.0	57.4	0.4	3.0	1.3	0.9	0.9	0.4	10.4
	Ocp	1.1	1.8	1.8	2.5	7.1	1.7	2.3	23.8	3.0	10.5
2200-2300	Pro	1.2	19.6	62.7	0.0	2.4	0.9	0.2	0.5	0.3	12.2
	Ocp	1.0	1.7	2.2	0.0	5.9	1.8	1.0	15.0	2.0	10.3
16 hours	Pro	2.1	25.1	42.8	0.9	2.6	12.6	1.3	2.2	0.4	9.9
	Ocp	1.0	1.5	2.0	2.7	8.0	1.7	1.6	18.9	5.0	17.8

Legend

Pro. Proportion of vehicles in % (Sum may not add up to 100% due to figure rounding)
Ocp. Average occupancy of vehicles
M&H Medium and Heavy