

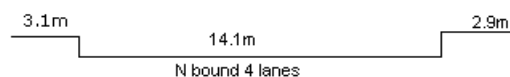
YEAR 2008

COVERAGE (B) STATION 2211

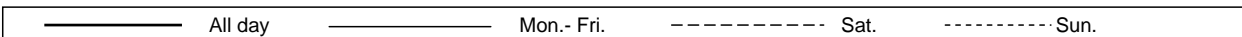
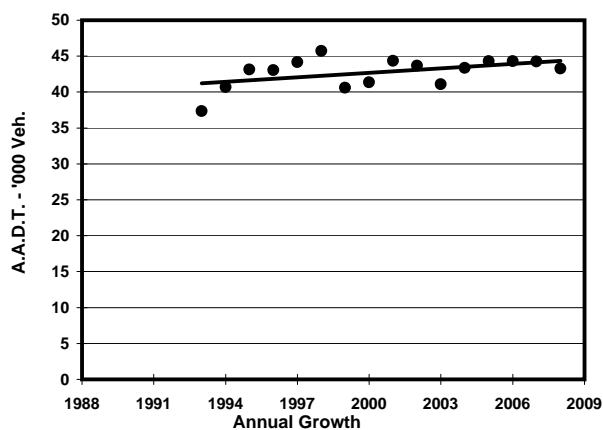
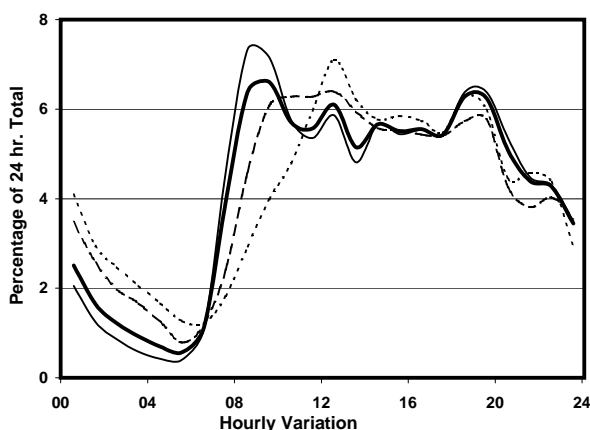
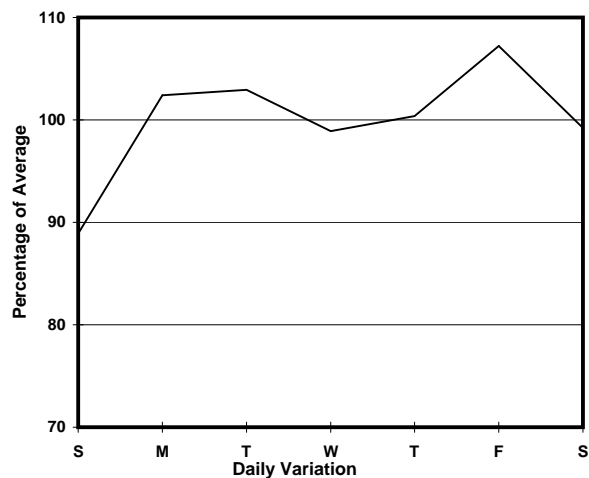
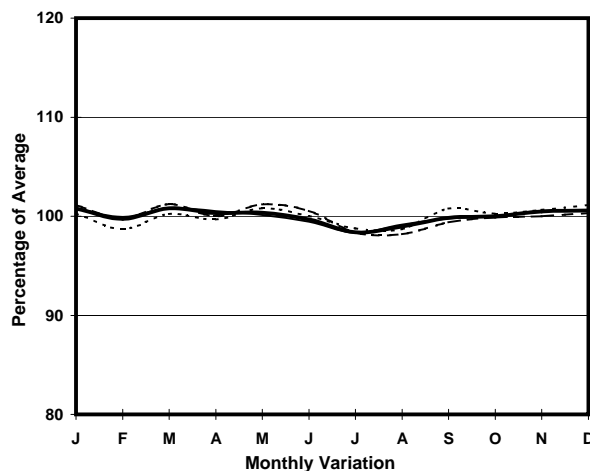
ROAD NETWORK MAJOR

ROAD TYPE PRIMARY DISTRIBUTOR

LINK GARDEN RD (from DES VOEUX RD C to UPPER ALBERT RD)



1. TRAFFIC FLOW VARIATION AND GROWTH



2. TRAFFIC CHARACTERISTICS (BY DIRECTION)

| Parameter | All - Day | Mon. - Fri. | Sat. | Sun. |
|--------------------------------------|-----------|-------------|-----------|-----------|
| NORTH BOUND | | | | |
| A.A.D.T. | 43260 | 44540 | 43200 | 38720 |
| R 12 / 24 - % | 67.9 | 69.3 | 65.7 | 62 |
| R 16 / 24 - % | 87.9 | 89.8 | 83.5 | 81.3 |
| AM Peak Hour | 0900-1000 | 0800-0900 | 0900-1000 | 0900-1000 |
| One-way flow at AM peak hour | 2860 | 3270 | 2630 | 1550 |
| T - % (AM) | - | 3.9 | - | - |
| PM Peak Hour | 1800-1900 | 1800-1900 | 1800-1900 | 1800-1900 |
| One-way flow at PM peak hour | 2720 | 2840 | 2480 | 2440 |
| T - % (PM) | - | 3.5 | - | - |
| Prop.of commercial vehicles - 16 hr. | - | 4.3 | - | - |
| A.A.D.T. | - | - | - | - |
| R 12 / 24 - % | - | - | - | - |
| R 16 / 24 - % | - | - | - | - |
| AM Peak Hour | - | - | - | - |
| One-way flow at AM peak hour | - | - | - | - |
| T - % (AM) | - | - | - | - |
| PM Peak Hour | - | - | - | - |
| One-way flow at PM peak hour | - | - | - | - |
| T - % (PM) | - | - | - | - |
| Prop.of commercial vehicles - 16 hr. | - | - | - | - |

3. OTHER INFORMATION AND COMMENT

4. Vehicle classification and occupancy - Monday to Friday

| Time | | Class of vehicle | | | | | | | | | |
|------------------------|-----|------------------|----------------|------|---------------|------|------------|-------|----------------|---------|------|
| | | Motor Cycle | Private Car | Taxi | Private LB | PLB | Goods veh. | | Non Fr. Bus | Fr. Bus | |
| | | | | | | | Light | M & H | | SD | DD |
| 0700-0800 | Pro | 1.8 | 31.0 | 46.8 | 4.0 | 4.5 | 2.9 | 0.9 | 4.9 | 0.9 | 2.4 |
| | Ocp | 1.0 | 1.6 | 1.9 | 5.8 | 8.6 | 1.3 | 1.3 | 12.2 | 11.9 | 21.1 |
| 0800-0900 Peak hour | Pro | 0.6 | 53.0 | 37.1 | 0.9 | 2.3 | 2.3 | 0.2 | 2.2 | 0.4 | 1.1 |
| | Ocp | 1.2 | 1.5 | 2.1 | 5.3 | 11.6 | 1.6 | 1.5 | 14.0 | 14.1 | 48.8 |
| 0900-1000 | Pro | 0.8 | 46.1 | 41.1 | 0.7 | 2.3 | 5.4 | 0.3 | 1.7 | 0.4 | 1.1 |
| | Ocp | 1.0 | 1.5 | 2.0 | 3.3 | 10.2 | 1.6 | 1.7 | 8.7 | 12.2 | 33.1 |
| 1000-1100 | Pro | 1.2 | 36.4 | 42.2 | 0.5 | 2.0 | 13.3 | 0.8 | 1.7 | 0.6 | 1.5 |
| | Ocp | 1.0 | 1.5 | 1.8 | 3.7 | 9.4 | 1.8 | 1.6 | 3.6 | 6.8 | 21.1 |
| 1100-1200 | Pro | 1.9 | 41.8 | 33.0 | 1.7 | 2.0 | 15.2 | 0.8 | 1.5 | 0.6 | 1.5 |
| | Ocp | 1.1 | 1.5 | 1.9 | 3.0 | 8.8 | 1.8 | 1.8 | 7.9 | 7.6 | 25.7 |
| 1200-1300 | Pro | 2.2 | 38.0 | 41.0 | 1.5 | 1.5 | 10.9 | 1.1 | 2.2 | 0.5 | 1.2 |
| | Ocp | 1.1 | 1.4 | 2.2 | 4.2 | 9.5 | 1.8 | 1.3 | 8.9 | 7.7 | 29.2 |
| 1300-1400 | Pro | 1.7 | 33.9 | 44.7 | 0.9 | 2.2 | 10.9 | 1.1 | 2.2 | 0.7 | 1.6 |
| | Ocp | 1.1 | 1.4 | 1.9 | 4.8 | 11.7 | 1.6 | 1.5 | 7.8 | 7.3 | 25.1 |
| 1400-1500 | Pro | 1.0 | 36.7 | 45.3 | 0.7 | 1.9 | 9.6 | 1.5 | 1.2 | 0.6 | 1.5 |
| | Ocp | 1.0 | 1.5 | 1.9 | 1.8 | 10.5 | 1.6 | 2.1 | 8.6 | 8.9 | 23.6 |
| 1500-1600 | Pro | 1.9 | 35.6 | 41.0 | 1.0 | 1.2 | 12.6 | 1.7 | 2.8 | 0.7 | 1.4 |
| | Ocp | 1.1 | 1.4 | 2.0 | 4.5 | 12.0 | 1.8 | 2.1 | 11.4 | 11.6 | 25.8 |
| 1600-1700 | Pro | 2.3 | 41.6 | 37.3 | 2.2 | 1.4 | 10.3 | 0.3 | 2.6 | 0.6 | 1.5 |
| | Ocp | 1.0 | 1.5 | 1.7 | 3.0 | 12.8 | 2.0 | 1.5 | 3.8 | 11.8 | 36.0 |
| 1700-1800 | Pro | 1.9 | 35.7 | 47.3 | 0.5 | 1.9 | 7.2 | 0.2 | 2.8 | 0.7 | 1.7 |
| | Ocp | 1.1 | 1.5 | 2.1 | 3.0 | 8.3 | 2.2 | 2.0 | 3.6 | 11.9 | 34.0 |
| 1800-1900 | Pro | 3.6 | 39.4 | 45.7 | 0.2 | 1.9 | 5.7 | 0.0 | 1.4 | 0.7 | 1.4 |
| | Ocp | 1.1 | 1.4 | 1.7 | 1.0 | 13.4 | 1.8 | 0.0 | 6.6 | 11.5 | 36.5 |
| 1900-2000 | Pro | 2.2 | 34.0 | 57.4 | 0.5 | 1.1 | 1.8 | 0.0 | 1.4 | 0.6 | 1.1 |
| | Ocp | 1.0 | 1.4 | 1.6 | 2.8 | 12.4 | 2.0 | 0.0 | 6.0 | 6.5 | 24.3 |
| 2000-2100 | Pro | 2.1 | 25.2 | 67.4 | 0.3 | 1.2 | 1.6 | 0.0 | 0.4 | 0.5 | 1.3 |
| | Ocp | 1.1 | 1.6 | 1.5 | 5.5 | 11.0 | 1.5 | 0.0 | 1.0 | 5.4 | 13.1 |
| 2100-2200 | Pro | 1.1 | 25.9 | 67.7 | 0.2 | 1.1 | 1.7 | 0.0 | 0.4 | 0.6 | 1.4 |
| | Ocp | 1.0 | 1.6 | 1.8 | 5.0 | 12.3 | 1.8 | 0.0 | 30.0 | 7.2 | 10.3 |
| 2200-2300 | Pro | 1.9 | 21.8 | 72.7 | 0.2 | 1.1 | 0.2 | 0.0 | 0.2 | 0.6 | 1.4 |
| | Ocp | 1.1 | 1.6 | 1.9 | 4.0 | 6.5 | 1.0 | 0.0 | 32.0 | 3.5 | 9.5 |
| 16 hours | Pro | 1.7 | 36.9 | 47.4 | 0.9 | 1.8 | 6.9 | 0.5 | 1.8 | 0.6 | 1.4 |
| | Ocp | 1.1 | 1.5 | 1.8 | 4.1 | 10.5 | 1.8 | 1.7 | 8.6 | 9.3 | 26.7 |

Legend

Pro. Proportion of vehicles in % (Sum may not add up to 100% due to figure rounding)
Ocp. Average occupancy of vehicles
M&H Medium and Heavy