

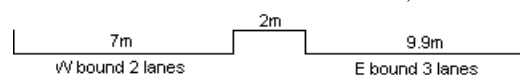
YEAR 2008

COVERAGE (B) STATION 2216

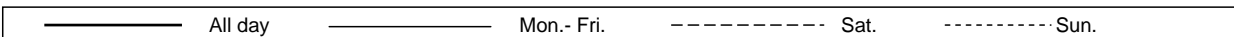
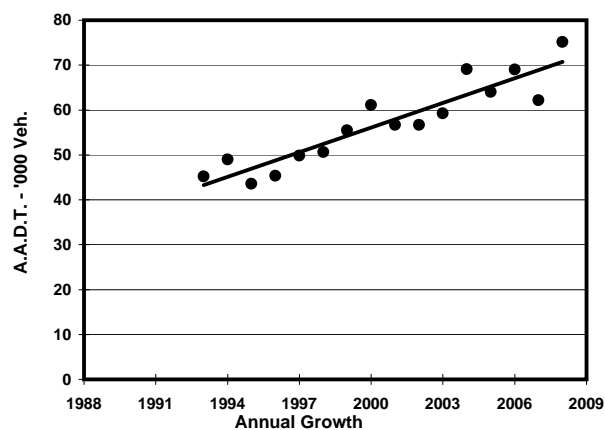
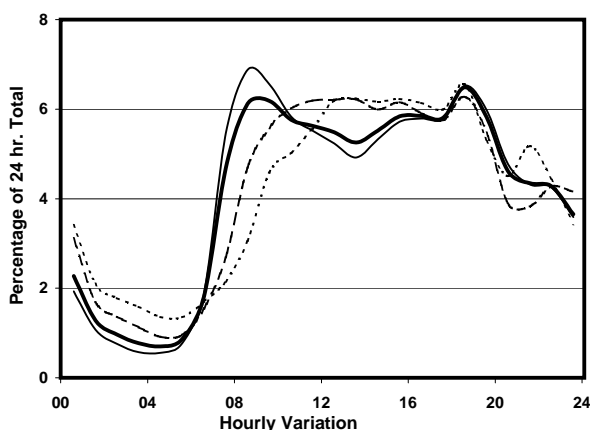
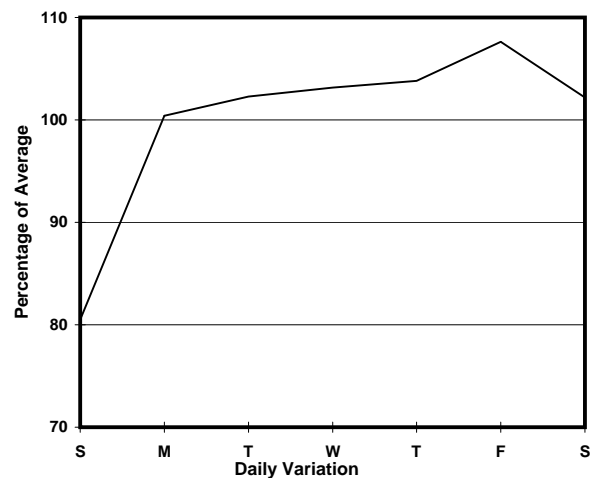
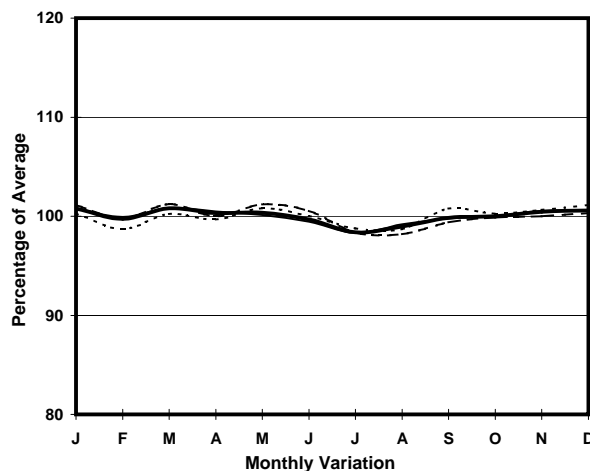
ROAD NETWORK MAJOR

ROAD TYPE PRIMARY DISTRIBUTOR

LINK CONNAUGHT RD FO <H173> (from RAMP NR GILMAN ST to THE NEAREST DIVERGING & MERGING POINTS WEST OF SHUN TAK CENTRE)



1. TRAFFIC FLOW VARIATION AND GROWTH



2. TRAFFIC CHARACTERISTICS (BY DIRECTION)

| Parameter | All - Day | Mon. - Fri. | Sat. | Sun. |
|--------------------------------------|-----------|-------------|-----------|-----------|
| EAST BOUND | | | | |
| A.A.D.T. | 35190 | 36720 | 36450 | 28850 |
| R 12 / 24 - % | 71.9 | 73.2 | 70.2 | 66 |
| R 16 / 24 - % | 88.4 | 89.6 | 86.4 | 84 |
| AM Peak Hour | 0900-1000 | 0800-0900 | 0900-1000 | 0900-1000 |
| One-way flow at AM peak hour | 2580 | 3010 | 2370 | 1600 |
| T - % (AM) | - | 5.2 | - | - |
| PM Peak Hour | 1800-1900 | 1800-1900 | 1800-1900 | 1800-1900 |
| One-way flow at PM peak hour | 2100 | 2160 | 2250 | 1850 |
| T - % (PM) | - | 5.3 | - | - |
| Prop.of commercial vehicles - 16 hr. | - | 5.8 | - | - |
| WEST BOUND | | | | |
| A.A.D.T. | 39930 | 41820 | 41130 | 32280 |
| R 12 / 24 - % | 65.7 | 66.4 | 65.5 | 62 |
| R 16 / 24 - % | 87 | 88.3 | 84 | 82.6 |
| AM Peak Hour | 0900-1000 | 0800-0900 | 0900-1000 | 0900-1000 |
| One-way flow at AM peak hour | 2070 | 2390 | 1960 | 1200 |
| T - % (AM) | - | 6.3 | - | - |
| PM Peak Hour | 1800-1900 | 1800-1900 | 1800-1900 | 1800-1900 |
| One-way flow at PM peak hour | 2780 | 2970 | 2620 | 2160 |
| T - % (PM) | - | 6 | - | - |
| Prop.of commercial vehicles - 16 hr. | - | 5.2 | - | - |

3. OTHER INFORMATION AND COMMENT

4. Vehicle classification and occupancy - Monday to Friday

| Time | | Class of vehicle | | | | | | | | | |
|------------------------|-----|------------------|----------------|------|---------------|------|------------|-------|----------------|---------|------|
| | | Motor Cycle | Private Car | Taxi | Private LB | PLB | Goods veh. | | Non Fr. Bus | Fr. Bus | |
| | | | | | | | Light | M & H | | SD | DD |
| 0700-0800 | Pro | 3.3 | 20.4 | 49.3 | 1.2 | 3.4 | 14.4 | 3.3 | 3.4 | 0.1 | 1.1 |
| | Ocp | 1.1 | 1.5 | 1.9 | 7.1 | 12.0 | 1.6 | 1.1 | 13.5 | 10.3 | 26.5 |
| 0800-0900 Peak hour | Pro | 3.2 | 44.9 | 33.1 | 0.7 | 3.7 | 8.8 | 1.6 | 2.9 | 0.1 | 1.1 |
| | Ocp | 1.1 | 1.5 | 1.9 | 2.3 | 12.4 | 1.8 | 1.2 | 28.9 | 14.1 | 34.9 |
| 0900-1000 | Pro | 2.0 | 37.6 | 38.0 | 0.7 | 2.1 | 14.1 | 3.7 | 1.0 | 0.1 | 0.8 |
| | Ocp | 1.0 | 1.5 | 1.9 | 2.2 | 10.2 | 1.8 | 1.6 | 17.7 | 8.5 | 20.6 |
| 1000-1100 | Pro | 2.3 | 35.6 | 30.2 | 0.9 | 1.3 | 22.5 | 4.7 | 1.5 | 0.1 | 0.9 |
| | Ocp | 1.0 | 1.6 | 2.0 | 2.6 | 7.5 | 1.6 | 1.5 | 12.8 | 5.5 | 14.3 |
| 1100-1200 | Pro | 2.8 | 35.0 | 28.8 | 1.8 | 1.3 | 24.3 | 3.5 | 1.6 | 0.1 | 0.8 |
| | Ocp | 1.1 | 1.7 | 2.1 | 1.6 | 11.7 | 1.6 | 1.4 | 15.0 | 1.3 | 17.2 |
| 1200-1300 | Pro | 3.1 | 41.0 | 29.9 | 1.4 | 1.2 | 18.2 | 3.6 | 0.8 | 0.2 | 0.6 |
| | Ocp | 1.0 | 1.9 | 2.2 | 3.1 | 7.7 | 1.8 | 1.5 | 21.8 | 6.9 | 20.6 |
| 1300-1400 | Pro | 2.0 | 38.3 | 28.3 | 1.4 | 1.3 | 21.1 | 5.9 | 0.9 | 0.1 | 0.7 |
| | Ocp | 1.1 | 1.7 | 2.2 | 2.6 | 6.5 | 1.8 | 1.3 | 14.3 | 4.2 | 20.7 |
| 1400-1500 | Pro | 2.5 | 39.4 | 28.9 | 2.0 | 1.1 | 20.7 | 3.1 | 1.7 | 0.2 | 0.5 |
| | Ocp | 1.0 | 1.8 | 2.3 | 3.9 | 7.5 | 1.8 | 1.4 | 9.9 | 3.0 | 25.0 |
| 1500-1600 | Pro | 2.4 | 40.8 | 28.8 | 2.0 | 1.0 | 19.2 | 3.0 | 1.7 | 0.1 | 0.9 |
| | Ocp | 1.1 | 1.7 | 2.2 | 3.5 | 9.1 | 1.8 | 1.8 | 16.5 | 7.3 | 13.7 |
| 1600-1700 | Pro | 3.6 | 38.0 | 30.4 | 1.5 | 1.8 | 17.9 | 3.6 | 2.1 | 0.2 | 0.8 |
| | Ocp | 1.1 | 1.6 | 2.1 | 2.1 | 8.8 | 1.7 | 1.6 | 13.1 | 5.1 | 15.0 |
| 1700-1800 | Pro | 3.5 | 48.4 | 25.8 | 2.0 | 1.6 | 13.2 | 2.1 | 2.3 | 0.1 | 1.1 |
| | Ocp | 1.1 | 1.6 | 2.2 | 3.0 | 12.8 | 1.7 | 1.4 | 10.7 | 14.8 | 19.3 |
| 1800-1900 | Pro | 3.3 | 49.6 | 30.2 | 0.9 | 2.1 | 8.2 | 1.4 | 2.9 | 0.1 | 1.2 |
| | Ocp | 1.0 | 1.6 | 2.3 | 1.5 | 14.6 | 1.7 | 1.4 | 30.0 | 19.0 | 33.4 |
| 1900-2000 | Pro | 2.0 | 52.1 | 34.3 | 0.2 | 2.0 | 4.8 | 1.1 | 1.9 | 0.1 | 1.4 |
| | Ocp | 1.1 | 1.5 | 2.1 | 1.0 | 14.8 | 1.8 | 1.8 | 25.8 | 12.2 | 29.1 |
| 2000-2100 | Pro | 1.3 | 42.5 | 43.3 | 0.3 | 4.1 | 4.6 | 1.6 | 1.3 | 0.1 | 0.8 |
| | Ocp | 1.0 | 1.6 | 2.0 | 2.3 | 8.9 | 1.6 | 1.4 | 17.3 | 9.4 | 14.3 |
| 2100-2200 | Pro | 2.6 | 40.6 | 47.7 | 0.1 | 3.0 | 3.5 | 1.1 | 0.8 | 0.1 | 0.4 |
| | Ocp | 1.0 | 1.6 | 1.9 | 3.0 | 9.5 | 1.8 | 1.3 | 20.0 | 7.0 | 15.7 |
| 2200-2300 | Pro | 2.7 | 37.7 | 51.4 | 0.1 | 4.0 | 2.5 | 0.6 | 0.4 | 0.1 | 0.6 |
| | Ocp | 1.1 | 1.5 | 2.1 | 2.0 | 11.6 | 1.3 | 1.4 | 31.0 | 5.0 | 11.7 |
| 16 hours | Pro | 2.7 | 40.6 | 34.3 | 1.1 | 2.2 | 13.7 | 2.7 | 1.7 | 0.1 | 0.9 |
| | Ocp | 1.1 | 1.6 | 2.1 | 2.9 | 10.9 | 1.7 | 1.5 | 19.4 | 8.5 | 22.6 |

Legend

Pro. Proportion of vehicles in % (Sum may not add up to 100% due to figure rounding)
Ocp. Average occupancy of vehicles
M&H Medium and Heavy