

YEAR

2008

LINK WING LOK ST (from MORRISON ST to DES VOEUX RD C)

COVERAGE (B) STATION

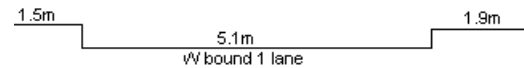
2402

ROAD NETWORK

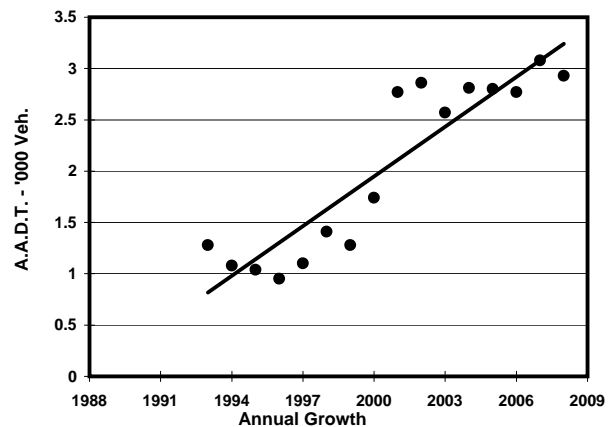
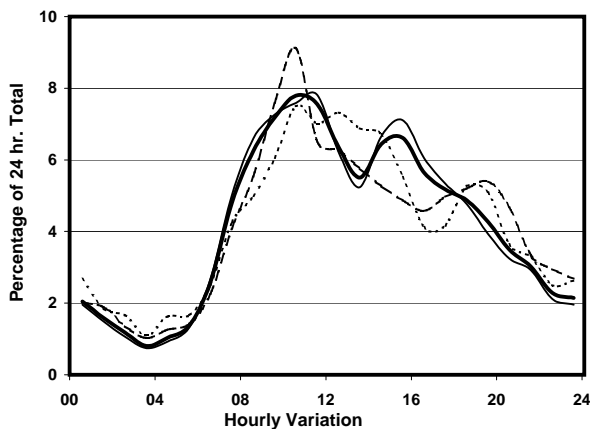
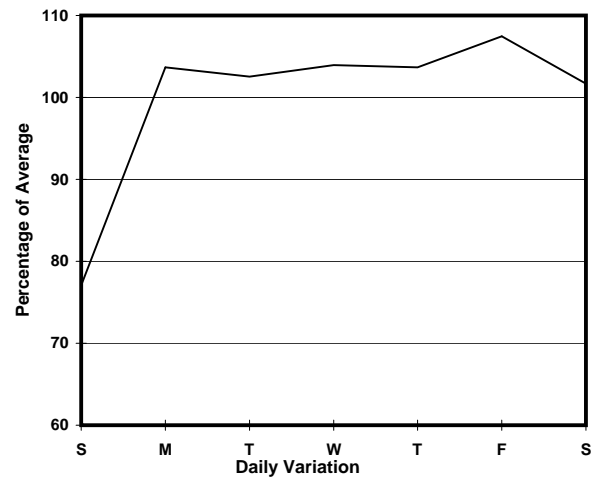
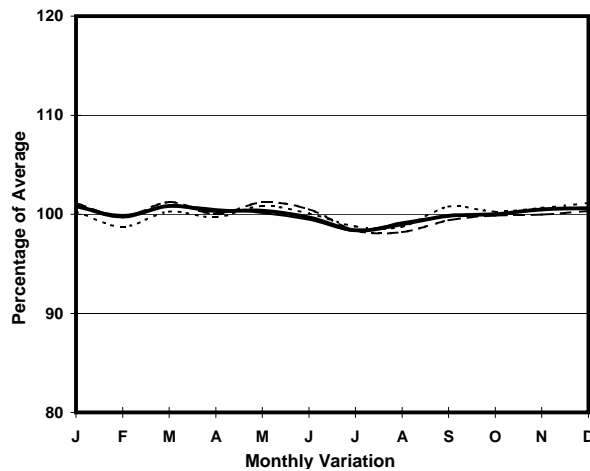
MINOR

ROAD TYPE

LOCAL DISTRIBUTOR



1. TRAFFIC FLOW VARIATION AND GROWTH



2. TRAFFIC CHARACTERISTICS (BY DIRECTION)

Parameter	All - Day	Mon. - Fri.	Sat.	Sun.
WEST BOUND				
A.A.D.T.	2930	3090	3020	2290
R 12 / 24 - %	74.2	75.6	69.7	69.8
R 16 / 24 - %	87.2	87.8	86.1	84.3
AM Peak Hour	0900-1000	0900-1000	0900-1000	0900-1000
One-way flow at AM peak hour	210	230	230	140
T - % (AM)	-	3.4	-	-
PM Peak Hour	1600-1700	1600-1700	1800-1900	1800-1900
One-way flow at PM peak hour	170	190	160	120
T - % (PM)	-	-	-	-
Prop.of commercial vehicles - 16 hr.	-	1.6	-	-
 A.A.D.T.	-	-	-	-
R 12 / 24 - %	-	-	-	-
R 16 / 24 - %	-	-	-	-
AM Peak Hour	-	-	-	-
One-way flow at AM peak hour	-	-	-	-
T - % (AM)	-	-	-	-
PM Peak Hour	-	-	-	-
One-way flow at PM peak hour	-	-	-	-
T - % (PM)	-	-	-	-
Prop.of commercial vehicles - 16 hr.	-	-	-	-

3. OTHER INFORMATION AND COMMENT

4. Vehicle classification and occupancy - Monday to Friday

Time		Class of vehicle									
		Motor Cycle	Private Car	Taxi	Private LB	PLB	Goods veh.		Non Fr. Bus	Fr. Bus	
							Light	M & H		SD	DD
0700-0800	Pro	7.4	9.3	50.0	1.9	0.0	27.8	3.7	0.0	0.0	0.0
	Ocp	1.3	1.2	1.1	4.0	0.0	1.5	2.0	0.0	0.0	0.0
0800-0900	Pro	0.0	28.2	53.8	0.0	0.0	17.9	0.0	0.0	0.0	0.0
	Ocp	0.0	1.5	1.2	0.0	0.0	1.7	0.0	0.0	0.0	0.0
0900-1000	Pro	1.7	25.4	47.5	1.7	0.0	20.3	3.4	0.0	0.0	0.0
	Ocp	1.0	1.1	1.2	2.0	0.0	1.4	1.5	0.0	0.0	0.0
1000-1100	Pro	0.0	25.5	52.7	0.0	0.0	20.0	1.8	0.0	0.0	0.0
	Ocp	0.0	1.6	1.2	0.0	0.0	1.4	1.0	0.0	0.0	0.0
1100-1200 Peak hour	Pro	4.8	27.4	30.6	0.0	0.0	35.5	1.6	0.0	0.0	0.0
	Ocp	1.0	1.2	1.4	0.0	0.0	1.8	2.0	0.0	0.0	0.0
1200-1300	Pro	2.1	41.7	37.5	0.0	0.0	18.8	0.0	0.0	0.0	0.0
	Ocp	1.0	1.5	2.0	0.0	0.0	1.7	0.0	0.0	0.0	0.0
1300-1400	Pro	2.0	40.8	30.6	0.0	0.0	26.5	0.0	0.0	0.0	0.0
	Ocp	1.0	1.2	1.2	0.0	0.0	1.6	0.0	0.0	0.0	0.0
1400-1500	Pro	1.8	21.4	37.5	1.8	0.0	35.7	1.8	0.0	0.0	0.0
	Ocp	1.0	1.8	1.4	2.0	0.0	1.8	2.0	0.0	0.0	0.0
1500-1600	Pro	4.9	41.0	31.1	0.0	0.0	21.3	1.6	0.0	0.0	0.0
	Ocp	1.0	1.4	1.7	0.0	0.0	1.6	2.0	0.0	0.0	0.0
1600-1700	Pro	3.8	39.6	17.0	1.9	0.0	37.7	0.0	0.0	0.0	0.0
	Ocp	1.0	1.5	2.1	1.0	0.0	1.7	0.0	0.0	0.0	0.0
1700-1800	Pro	0.0	38.6	29.5	4.5	0.0	27.3	0.0	0.0	0.0	0.0
	Ocp	0.0	1.3	1.5	1.5	0.0	1.5	0.0	0.0	0.0	0.0
1800-1900	Pro	13.9	36.1	33.3	0.0	0.0	16.7	0.0	0.0	0.0	0.0
	Ocp	1.0	2.1	1.8	0.0	0.0	1.3	0.0	0.0	0.0	0.0
1900-2000	Pro	3.8	46.2	30.8	0.0	0.0	11.5	7.7	0.0	0.0	0.0
	Ocp	1.0	1.3	2.0	0.0	0.0	3.0	2.5	0.0	0.0	0.0
2000-2100	Pro	13.3	43.3	33.3	0.0	0.0	6.7	3.3	0.0	0.0	0.0
	Ocp	1.0	1.5	2.0	0.0	0.0	2.0	1.0	0.0	0.0	0.0
2100-2200	Pro	0.0	40.0	53.3	0.0	0.0	6.7	0.0	0.0	0.0	0.0
	Ocp	0.0	1.8	1.4	0.0	0.0	2.0	0.0	0.0	0.0	0.0
2200-2300	Pro	5.6	22.2	50.0	0.0	0.0	22.2	0.0	0.0	0.0	0.0
	Ocp	1.0	1.0	1.3	0.0	0.0	2.0	0.0	0.0	0.0	0.0
16 hours	Pro	3.8	31.9	37.7	0.9	0.0	24.1	1.6	0.0	0.0	0.0
	Ocp	1.0	1.4	1.5	2.0	0.0	1.6	1.8	0.0	0.0	0.0

Legend

Pro. Proportion of vehicles in % (Sum may not add up to 100% due to figure rounding)
Ocp. Average occupancy of vehicles
M&H Medium and Heavy