

YEAR

2008

LINK

D'AGUILAR ST (from QUEEN'S RD C to WYNDHAM ST)

COVERAGE (B) STATION

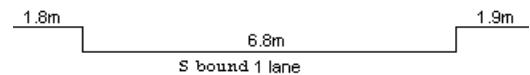
2404

ROAD NETWORK

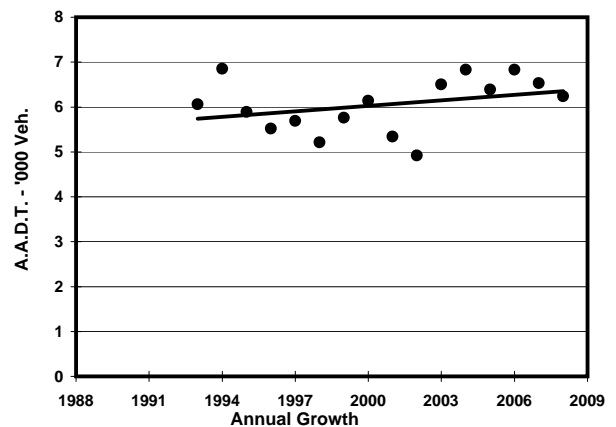
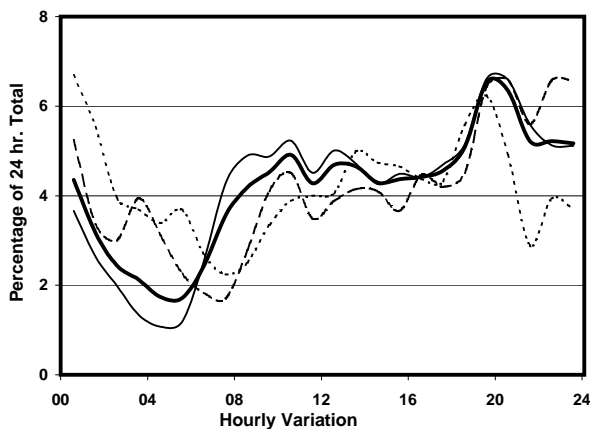
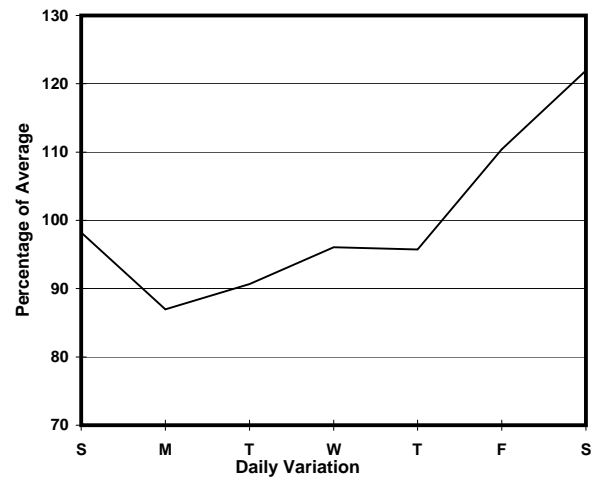
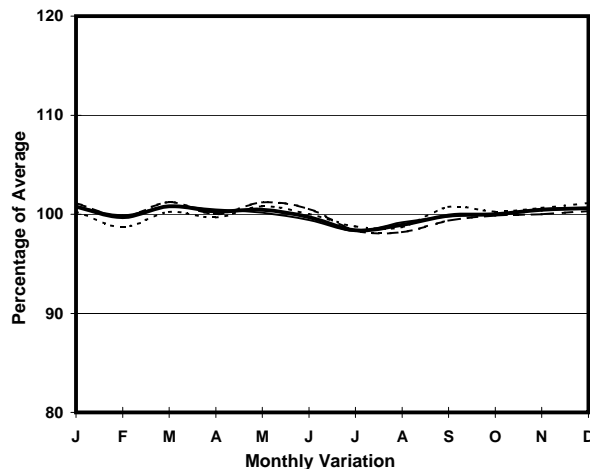
MINOR

ROAD TYPE

LOCAL DISTRIBUTOR



1. TRAFFIC FLOW VARIATION AND GROWTH



2. TRAFFIC CHARACTERISTICS (BY DIRECTION)

Parameter	All - Day	Mon. - Fri.	Sat.	Sun.
SOUTH BOUND				
A.A.D.T.	6240	5990	7620	6140
R 12 / 24 - %	53.5	56.5	45.5	48.7
R 16 / 24 - %	76.9	80.4	70.7	66.7
AM Peak Hour	0900-1000	0800-0900	0900-1000	0900-1000
One-way flow at AM peak hour	280	290	310	210
T - % (AM)	-	6.7	-	-
PM Peak Hour	1800-1900	1800-1900	1800-1900	1800-1900
One-way flow at PM peak hour	320	310	340	340
T - % (PM)	-	11.9	-	-
Prop.of commercial vehicles - 16 hr.	-	8	-	-
 A.A.D.T.	-	-	-	-
R 12 / 24 - %	-	-	-	-
R 16 / 24 - %	-	-	-	-
AM Peak Hour	-	-	-	-
One-way flow at AM peak hour	-	-	-	-
T - % (AM)	-	-	-	-
PM Peak Hour	-	-	-	-
One-way flow at PM peak hour	-	-	-	-
T - % (PM)	-	-	-	-
Prop.of commercial vehicles - 16 hr.	-	-	-	-

3. OTHER INFORMATION AND COMMENT

4. Vehicle classification and occupancy - Monday to Friday

Time		Class of vehicle									
		Motor Cycle	Private Car	Taxi	Private LB	PLB	Goods veh.		Non Fr. Bus	Fr. Bus	
							Light	M & H		SD	DD
0700-0800	Pro	0.0	14.1	67.2	0.0	0.0	10.9	1.6	0.0	2.0	4.3
	Ocp	0.0	1.6	2.9	0.0	0.0	1.7	3.0	0.0	23.0	33.5
0800-0900	Pro	1.3	21.5	66.9	0.0	0.0	3.8	0.0	1.3	1.6	3.8
	Ocp	1.0	1.5	1.4	0.0	0.0	1.7	0.0	6.0	21.8	27.2
0900-1000	Pro	8.6	12.3	50.3	0.0	0.0	20.9	1.2	1.2	1.5	4.0
	Ocp	1.0	1.6	1.5	0.0	0.0	2.0	3.0	11.0	20.6	15.7
1000-1100	Pro	1.6	24.8	41.9	1.6	0.0	20.2	1.6	1.6	1.6	5.4
	Ocp	1.0	1.6	1.9	9.0	0.0	2.0	2.0	2.0	13.5	11.4
1100-1200	Pro	3.4	22.2	37.6	0.0	0.0	29.1	0.0	0.0	2.1	5.6
	Ocp	1.0	1.1	1.9	0.0	0.0	1.9	0.0	0.0	10.4	9.5
1200-1300	Pro	1.5	16.9	63.1	0.0	0.0	10.8	1.5	0.0	1.5	4.6
	Ocp	1.0	1.5	2.3	0.0	0.0	1.6	2.0	0.0	13.5	14.5
1300-1400	Pro	3.0	27.0	50.9	0.0	0.0	9.0	1.5	1.5	1.9	5.2
	Ocp	1.0	1.8	1.8	0.0	0.0	1.3	2.0	1.0	9.2	14.8
1400-1500	Pro	1.6	29.9	29.9	0.0	0.0	29.9	1.6	0.0	1.6	5.5
	Ocp	1.0	1.3	2.1	0.0	0.0	1.5	3.0	0.0	15.5	15.4
1500-1600	Pro	2.0	42.4	24.2	0.0	0.0	18.2	4.0	0.0	2.5	6.6
	Ocp	1.0	1.5	1.9	0.0	0.0	1.9	1.5	0.0	16.2	14.5
1600-1700	Pro	0.0	40.2	24.1	0.0	0.0	22.1	4.0	0.0	2.5	7.0
	Ocp	0.0	1.6	2.0	0.0	0.0	2.1	1.5	0.0	16.6	21.0
1700-1800	Pro	4.5	42.9	27.1	0.0	0.0	11.3	2.3	2.3	2.8	6.8
	Ocp	1.0	1.5	2.1	0.0	0.0	1.6	2.0	6.0	18.8	21.2
1800-1900	Pro	5.1	28.8	44.1	1.7	1.7	6.8	3.4	1.7	1.7	5.1
	Ocp	1.0	1.8	2.4	3.0	10.0	1.5	1.0	2.0	33.8	34.8
1900-2000 Peak hour	Pro	2.5	28.8	60.0	0.0	0.0	1.3	0.0	1.3	1.9	4.4
	Ocp	1.0	1.5	2.6	0.0	0.0	3.0	0.0	15.0	27.8	36.9
2000-2100	Pro	1.0	21.5	66.7	0.0	0.0	6.2	0.0	1.0	1.3	2.3
	Ocp	1.0	2.0	2.6	0.0	0.0	1.2	0.0	12.0	18.2	26.3
2100-2200	Pro	3.8	24.5	66.8	0.0	0.0	0.9	0.0	0.9	1.2	1.9
	Ocp	1.5	1.8	2.4	0.0	0.0	1.0	0.0	16.0	16.6	25.6
2200-2300	Pro	1.1	24.8	70.1	0.0	0.0	1.1	0.0	0.0	0.8	2.2
	Ocp	1.0	1.8	2.4	0.0	0.0	1.0	0.0	0.0	14.7	22.6
16 hours	Pro	2.6	25.2	52.7	0.2	0.1	11.3	1.2	0.8	1.7	4.3
	Ocp	1.1	1.6	2.2	6.0	10.0	1.8	1.9	7.9	18.3	21.1

Legend

Pro. Proportion of vehicles in % (Sum may not add up to 100% due to figure rounding)
Ocp. Average occupancy of vehicles
M&H Medium and Heavy