

YEAR

2008

LINK

TAI PO RD (from CALDECOTT RD to TAI PO RD INT)

COVERAGE (B) STATION

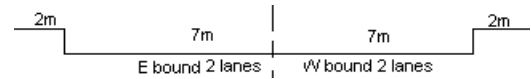
4201

ROAD NETWORK

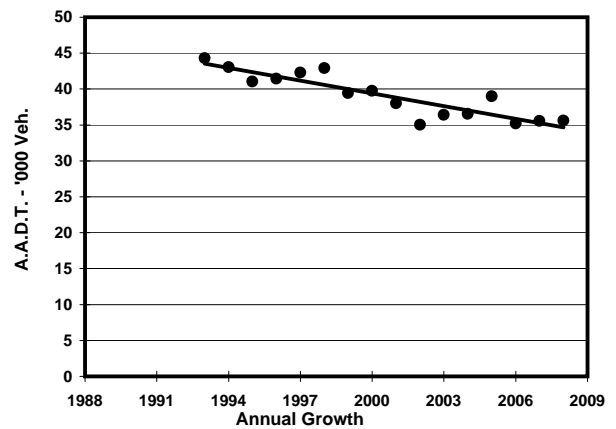
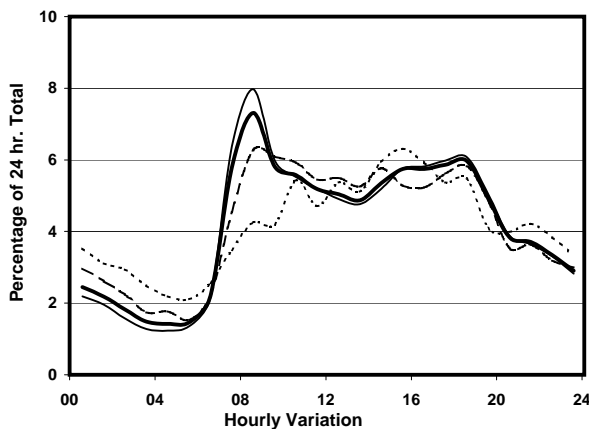
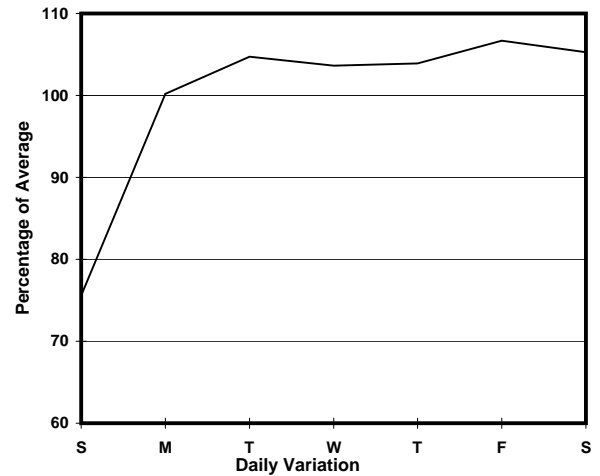
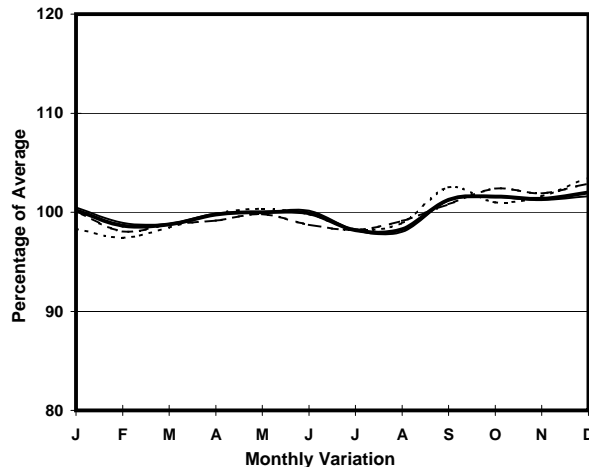
MAJOR

ROAD TYPE

PRIMARY DISTRIBUTOR



1. TRAFFIC FLOW VARIATION AND GROWTH



2. TRAFFIC CHARACTERISTICS (BY DIRECTION)

Parameter	All - Day	Mon. - Fri.	Sat.	Sun.
EAST BOUND				
A.A.D.T.	20170	21280	21590	15080
R 12 / 24 - %	69	70.7	66.3	60.6
R 16 / 24 - %	82.9	84.5	80.3	75
AM Peak Hour	0800-0900	0800-0900	0800-0900	0900-1000
One-way flow at AM peak hour	1760	2050	1530	660
T - % (AM)	-	9	-	-
PM Peak Hour	1800-1900	1700-1800	1800-1900	1800-1900
One-way flow at PM peak hour	1100	1160	1200	870
T - % (PM)	-	10.1	-	-
Prop.of commercial vehicles - 16 hr.	-	12.8	-	-
WEST BOUND				
A.A.D.T.	15450	16190	16420	12170
R 12 / 24 - %	67.4	68	67.3	62.9
R 16 / 24 - %	85.7	86.7	84.2	81.1
AM Peak Hour	0800-0900	0800-0900	0800-0900	0800-0900
One-way flow at AM peak hour	850	940	860	500
T - % (AM)	-	16.4	-	-
PM Peak Hour	1800-1900	1800-1900	1800-1900	1600-1700
One-way flow at PM peak hour	1030	1140	1020	770
T - % (PM)	-	8.3	-	-
Prop.of commercial vehicles - 16 hr.	-	13.6	-	-

3. OTHER INFORMATION AND COMMENT

4. Vehicle classification and occupancy - Monday to Friday

Time		Class of vehicle									
		Motor Cycle	Private Car	Taxi	Private LB	PLB	Goods veh.		Non Fr. Bus	Fr. Bus	
							Light	M & H		SD	DD
0700-0800	Pro	11.0	23.5	14.5	1.5	1.7	29.9	13.4	2.6	0.0	1.8
	Ocp	1.1	1.5	1.6	9.2	7.3	1.4	1.2	16.9	0.0	50.9
0800-0900 Peak hour	Pro	6.8	47.9	10.2	1.2	0.5	22.2	8.0	1.8	0.1	1.3
	Ocp	1.0	1.4	1.8	2.7	11.7	1.3	1.2	3.6	1.0	59.3
0900-1000	Pro	3.7	36.0	16.4	1.1	0.6	27.3	12.3	0.9	0.0	1.8
	Ocp	1.0	1.3	1.6	2.6	8.0	1.4	1.3	1.0	0.0	36.1
1000-1100	Pro	3.4	22.9	16.8	0.8	0.5	40.5	12.9	0.3	0.0	1.9
	Ocp	1.1	1.4	1.2	2.7	2.0	1.5	1.2	2.0	0.0	25.6
1100-1200	Pro	5.3	26.0	15.4	0.0	0.3	34.5	15.7	1.1	0.0	1.8
	Ocp	1.1	1.3	1.4	0.0	7.0	1.4	1.2	1.3	0.0	31.4
1200-1300	Pro	4.8	35.5	13.0	2.7	0.0	30.1	11.7	0.3	0.0	1.8
	Ocp	1.1	1.7	1.4	7.4	0.0	1.5	1.4	1.0	0.0	34.6
1300-1400	Pro	3.9	28.7	13.0	2.2	0.0	33.7	15.7	0.8	0.0	1.9
	Ocp	1.0	1.5	1.6	8.9	0.0	1.4	1.2	1.3	0.0	33.4
1400-1500	Pro	4.3	24.9	12.3	1.6	0.5	37.8	16.1	0.5	0.0	1.9
	Ocp	1.1	1.4	1.5	2.5	4.5	1.5	1.2	1.0	0.0	29.6
1500-1600	Pro	5.1	27.4	16.2	1.9	0.5	36.2	9.5	1.6	0.0	1.7
	Ocp	1.1	1.6	1.4	4.4	16.0	1.5	1.2	8.0	0.0	37.1
1600-1700	Pro	5.7	26.0	17.2	0.7	0.4	36.2	9.5	2.4	0.0	1.8
	Ocp	1.0	1.5	1.4	5.3	12.0	1.5	1.3	4.2	0.0	33.2
1700-1800	Pro	8.6	33.3	15.1	1.1	0.7	29.1	9.2	1.1	0.0	1.8
	Ocp	1.1	1.4	1.4	2.2	3.7	1.6	1.3	2.2	0.0	50.8
1800-1900	Pro	11.2	41.1	14.7	1.0	0.4	22.7	6.2	1.0	0.0	1.6
	Ocp	1.1	1.5	1.3	6.6	14.5	1.4	1.1	1.0	0.0	76.2
1900-2000	Pro	6.8	46.4	18.0	0.8	1.0	17.5	7.6	0.3	0.0	1.7
	Ocp	1.2	1.3	1.3	2.7	13.8	1.3	1.1	1.0	0.0	49.3
2000-2100	Pro	9.7	39.2	29.5	0.0	1.8	11.9	5.8	0.3	0.0	1.8
	Ocp	1.1	1.3	1.3	0.0	7.5	1.2	1.0	1.0	0.0	31.0
2100-2200	Pro	4.7	37.0	36.2	0.0	1.8	10.1	8.0	0.0	0.0	2.2
	Ocp	1.3	1.2	1.3	0.0	7.2	1.3	1.1	0.0	0.0	28.9
2200-2300	Pro	9.5	39.5	39.2	0.4	1.8	3.5	2.8	1.1	0.0	2.3
	Ocp	1.3	1.5	1.2	1.0	6.4	1.2	1.0	16.0	0.0	35.8
16 hours	Pro	6.5	33.9	17.5	1.1	0.7	27.1	10.3	1.1	0.1	1.8
	Ocp	1.1	1.4	1.4	5.0	8.4	1.5	1.2	5.6	1.0	40.6

Legend

Pro. Proportion of vehicles in % (Sum may not add up to 100% due to figure rounding)
Ocp. Average occupancy of vehicles
M&H Medium and Heavy