

YEAR 2008

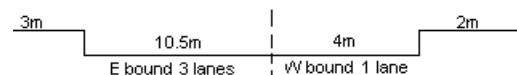
LINK

BOUNDARY ST (from TAI HANG TUNG RD to EMBANKMENT RD)

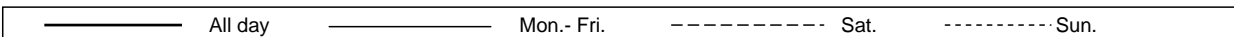
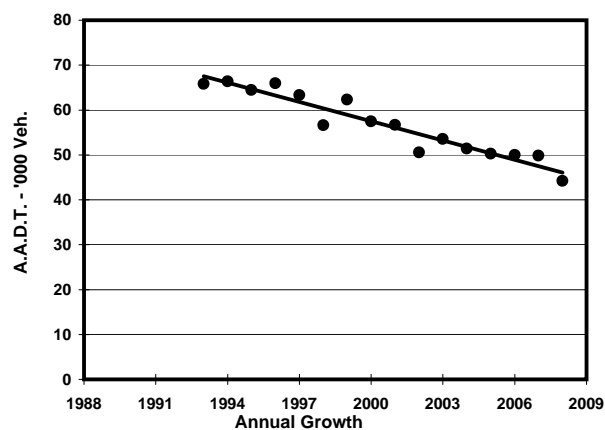
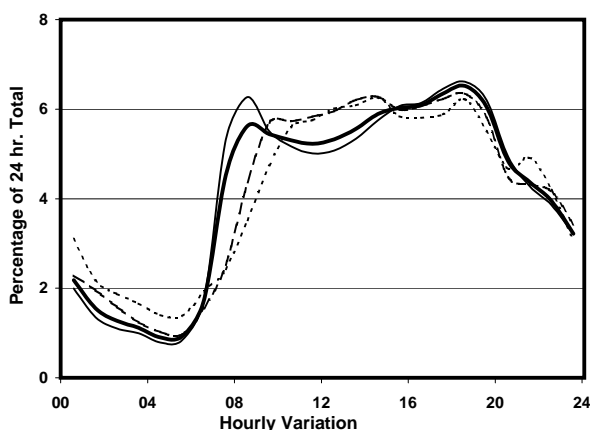
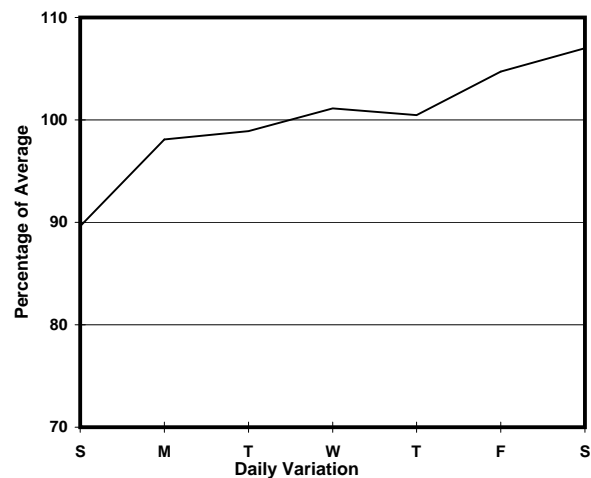
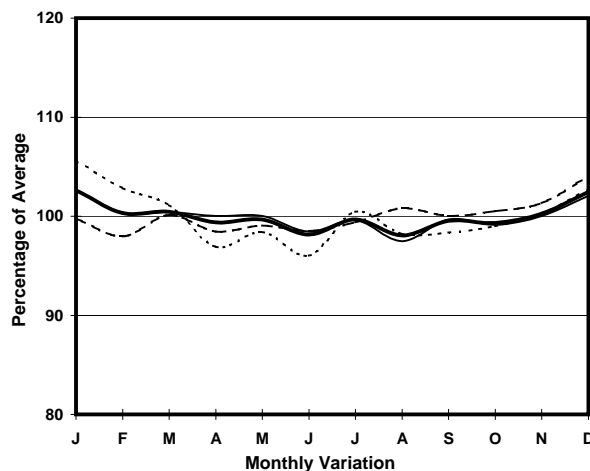
COVERAGE (B) STATION 4202

ROAD NETWORK MAJOR

ROAD TYPE PRIMARY DISTRIBUTOR



## 1. TRAFFIC FLOW VARIATION AND GROWTH



## 2. TRAFFIC CHARACTERISTICS (BY DIRECTION)

Parameter	All - Day	Mon. - Fri.	Sat.	Sun.
<b>EAST BOUND</b>				
A.A.D.T.	36320	36830	39300	32170
R 12 / 24 - %	67.9	68.7	67.5	64.1
R 16 / 24 - %	87.1	87.9	86.1	83.2
AM Peak Hour	0800-0900	0800-0900	0900-1000	0900-1000
One-way flow at AM peak hour	2050	2310	2290	1520
T - % (AM)	-	7.9	-	-
PM Peak Hour	1800-1900	1800-1900	1800-1900	1800-1900
One-way flow at PM peak hour	2400	2460	2520	2020
T - % (PM)	-	5	-	-
Prop.of commercial vehicles - 16 hr.	-	7.1	-	-
<b>WEST BOUND</b>				
A.A.D.T.	7870	7890	8270	7680
R 12 / 24 - %	67.7	68.7	65.6	64.5
R 16 / 24 - %	87.3	88.3	85.3	84.3
AM Peak Hour	0800-0900	0700-0800	0900-1000	0900-1000
One-way flow at AM peak hour	440	530	420	370
T - % (AM)	-	15.8	-	-
PM Peak Hour	1600-1700	1600-1700	1700-1800	1800-1900
One-way flow at PM peak hour	510	520	510	460
T - % (PM)	-	9.8	-	-
Prop.of commercial vehicles - 16 hr.	-	7.9	-	-

## 3. OTHER INFORMATION AND COMMENT

**4. Vehicle classification and occupancy - Monday to Friday**

Time		Class of vehicle									
		Motor Cycle	Private Car	Taxi	Private LB	PLB	Goods veh.		Non Fr. Bus	Fr. Bus	
							Light	M & H		SD	DD
0700-0800	Pro	3.2	15.6	40.3	4.9	8.4	13.3	1.4	9.6	0.3	3.0
	Ocp	1.1	1.7	2.2	8.4	11.4	1.7	1.5	19.3	10.3	39.4
0800-0900	Pro	2.9	36.9	26.4	2.6	4.8	17.7	1.9	4.7	0.1	2.0
	Ocp	1.0	1.5	2.0	7.7	13.9	1.7	1.9	14.3	13.8	33.9
0900-1000	Pro	2.9	32.8	27.0	1.3	5.2	24.2	2.3	1.5	0.2	2.6
	Ocp	1.1	1.4	1.8	3.3	10.0	1.7	1.5	1.2	9.6	17.5
1000-1100	Pro	2.7	26.2	29.0	1.8	4.4	27.1	4.1	2.2	0.1	2.3
	Ocp	1.1	1.5	1.7	2.8	8.4	1.6	1.8	5.5	6.3	19.8
1100-1200	Pro	4.8	26.1	29.2	0.8	6.4	25.4	2.8	2.2	0.3	2.1
	Ocp	1.0	1.6	1.8	1.8	6.1	1.7	1.4	1.9	7.7	29.5
1200-1300	Pro	2.1	32.6	27.3	1.2	5.3	21.8	2.2	4.9	0.2	2.4
	Ocp	1.1	1.5	1.9	4.6	8.3	1.7	1.1	5.9	8.7	29.3
1300-1400	Pro	2.1	26.2	28.4	3.8	3.9	24.4	3.6	4.7	0.2	2.7
	Ocp	1.1	1.6	2.0	5.1	9.2	1.6	1.3	6.7	12.5	26.6
1400-1500	Pro	2.6	33.0	27.0	2.1	4.2	23.4	2.6	2.5	0.2	2.4
	Ocp	1.0	1.6	2.0	2.7	10.7	1.6	1.5	3.2	9.1	27.3
1500-1600	Pro	2.0	35.4	29.0	1.5	4.9	20.1	1.6	3.1	0.2	2.1
	Ocp	1.1	1.6	2.1	6.1	8.6	1.6	1.3	13.9	14.6	38.9
1600-1700	Pro	3.0	35.0	26.7	2.0	4.4	20.7	2.0	3.7	0.2	2.3
	Ocp	1.0	1.5	2.0	3.8	10.9	1.6	1.5	3.8	12.1	45.4
1700-1800	Pro	4.9	37.2	28.0	2.0	4.6	16.9	1.0	2.6	0.2	2.6
	Ocp	1.1	1.5	2.0	4.4	11.7	1.6	1.4	5.4	17.0	52.1
1800-1900 Peak hour	Pro	6.0	41.3	28.6	0.6	5.0	13.9	0.9	1.0	0.2	2.5
	Ocp	1.0	1.6	2.2	2.2	16.0	1.6	1.3	2.6	13.3	61.5
1900-2000	Pro	4.9	47.7	29.6	0.3	3.8	9.8	0.9	0.9	0.1	2.0
	Ocp	1.2	1.5	2.2	3.0	16.2	1.6	2.5	4.5	11.8	62.9
2000-2100	Pro	3.6	39.4	38.3	0.2	6.0	8.3	0.9	0.6	0.3	2.4
	Ocp	1.2	1.6	2.0	1.0	11.8	1.4	1.3	12.5	8.0	48.0
2100-2200	Pro	4.0	43.1	35.9	0.5	5.2	6.5	0.2	1.5	0.2	2.9
	Ocp	1.3	1.7	2.1	4.0	10.0	1.5	2.0	2.8	5.8	44.6
2200-2300	Pro	3.8	44.7	38.7	0.4	5.2	3.3	0.4	0.4	0.3	2.9
	Ocp	1.2	1.7	2.0	2.5	11.4	1.6	1.0	3.5	5.0	40.3
16 hours	Pro	3.5	35.1	30.1	1.6	5.0	17.5	1.8	2.8	0.2	2.4
	Ocp	1.1	1.6	2.0	5.1	11.0	1.6	1.5	9.0	10.4	39.3

**Legend**

**Pro.** Proportion of vehicles in % (Sum may not add up to 100% due to figure rounding)  
**Ocp.** Average occupancy of vehicles  
**M&H** Medium and Heavy