

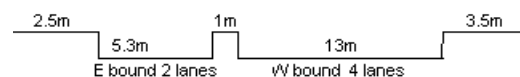
YEAR 2008

COVERAGE (B) STATION 4203

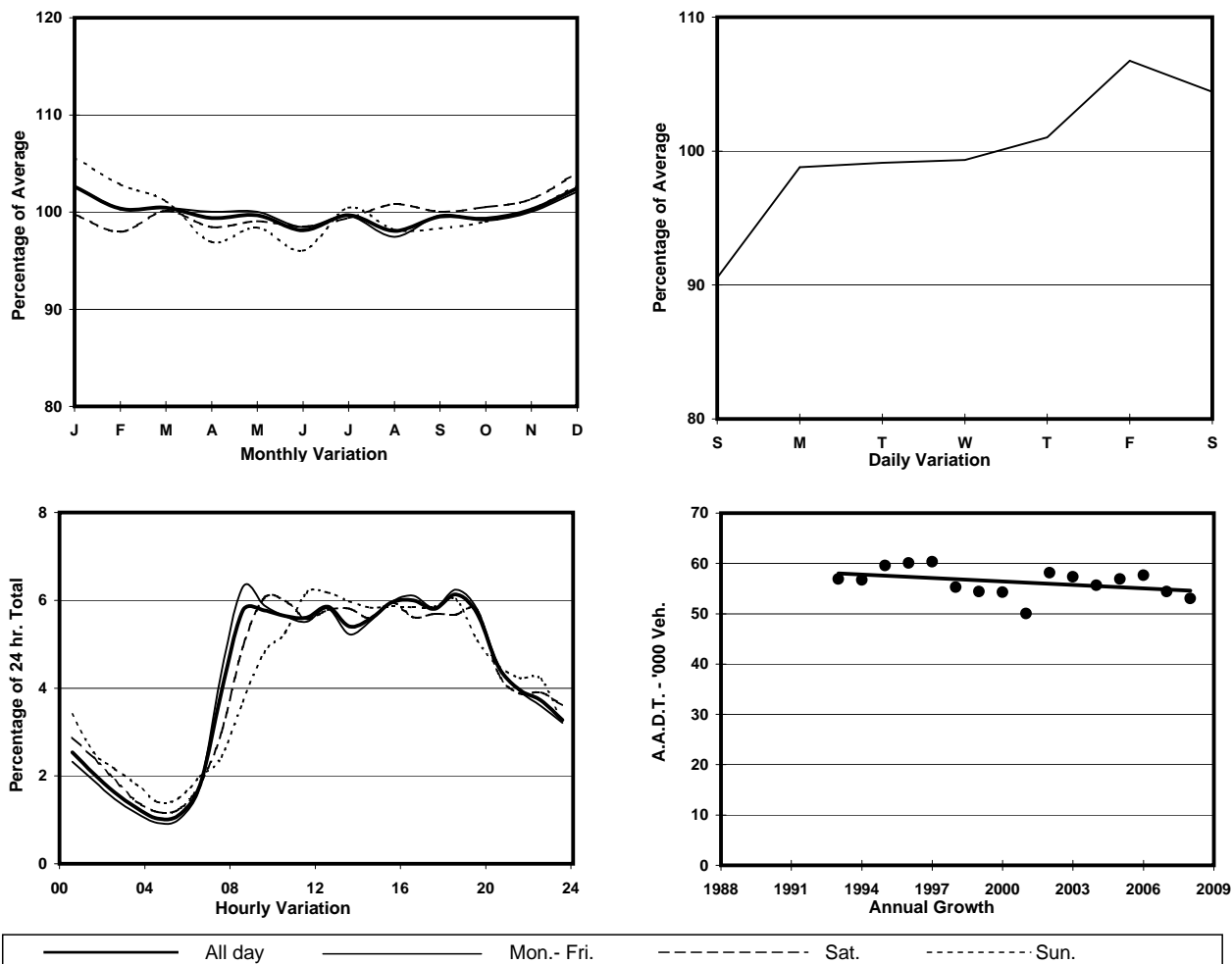
ROAD NETWORK MAJOR

ROAD TYPE PRIMARY DISTRIBUTOR

LINK PRINCE EDWARD RD W (from EMBANKMENT RD to YUEN NGAI ST)



## 1. TRAFFIC FLOW VARIATION AND GROWTH



## 2. TRAFFIC CHARACTERISTICS (BY DIRECTION)

Parameter	All - Day	Mon. - Fri.	Sat.	Sun.
<b>EAST BOUND</b>				
A.A.D.T.	3310	3180	3850	3540
R 12 / 24 - %	72.1	71.8	72	72.9
R 16 / 24 - %	88.6	88.7	88.2	88
AM Peak Hour	0800-0900	0800-0900	0800-0900	0800-0900
One-way flow at AM peak hour	200	180	290	250
T - % (AM)	-	-	-	-
PM Peak Hour	1800-1900	1600-1700	1600-1700	1800-1900
One-way flow at PM peak hour	210	200	250	240
T - % (PM)	-	2.6	-	-
Prop.of commercial vehicles - 16 hr.	-	0.8	-	-
<b>WEST BOUND</b>				
A.A.D.T.	49750	50660	51870	44780
R 12 / 24 - %	67.1	68.2	65.2	63.2
R 16 / 24 - %	85.1	86.1	83.2	81.5
AM Peak Hour	0900-1000	0800-0900	0900-1000	0900-1000
One-way flow at AM peak hour	2880	3220	3130	2120
T - % (AM)	-	8.2	-	-
PM Peak Hour	1800-1900	1800-1900	1800-1900	1800-1900
One-way flow at PM peak hour	3040	3160	2940	2670
T - % (PM)	-	6.5	-	-
Prop.of commercial vehicles - 16 hr.	-	6.9	-	-

## 3. OTHER INFORMATION AND COMMENT

**4. Vehicle classification and occupancy - Monday to Friday**

Time		Class of vehicle									
		Motor Cycle	Private Car	Taxi	Private LB	PLB	Goods veh.		Non Fr. Bus	Fr. Bus	
							Light	M & H		SD	DD
0700-0800	Pro	2.3	20.2	29.5	3.5	7.9	23.0	1.9	6.3	0.3	5.3
	Ocp	1.1	1.7	1.9	3.7	10.6	1.4	1.1	9.8	8.3	40.7
0800-0900 Peak hour	Pro	2.4	38.2	23.9	1.7	8.1	17.7	2.5	2.2	0.2	3.2
	Ocp	1.0	1.6	2.1	5.2	15.8	1.4	1.3	16.5	15.5	52.2
0900-1000	Pro	3.3	38.9	26.1	0.9	7.1	18.6	2.0	0.7	0.1	2.3
	Ocp	1.1	1.5	2.1	2.9	14.0	1.3	1.2	3.2	10.0	42.1
1000-1100	Pro	3.6	33.1	27.2	1.0	4.7	25.4	1.8	0.9	0.1	2.1
	Ocp	1.0	1.5	1.9	2.0	11.9	1.4	1.2	7.4	6.5	39.4
1100-1200	Pro	2.5	28.5	28.1	1.9	6.7	26.0	2.9	0.7	0.1	2.5
	Ocp	1.1	1.6	1.9	3.4	9.8	1.4	1.4	13.6	8.3	35.7
1200-1300	Pro	2.0	31.4	28.7	1.0	5.6	22.9	2.3	3.6	0.2	2.3
	Ocp	1.1	1.5	2.1	4.3	10.3	1.5	1.3	13.0	7.9	32.5
1300-1400	Pro	2.5	27.4	29.7	1.5	8.6	21.7	2.2	3.5	0.1	2.8
	Ocp	1.0	1.6	1.7	2.1	8.6	1.6	1.7	3.3	7.0	35.4
1400-1500	Pro	2.8	29.5	27.1	1.0	7.9	25.1	2.4	1.4	0.2	2.6
	Ocp	1.2	1.6	1.7	2.7	9.9	1.6	1.4	6.7	5.9	27.0
1500-1600	Pro	2.9	32.2	23.8	1.8	5.6	25.8	2.6	2.7	0.2	2.4
	Ocp	1.1	1.6	2.0	3.3	11.8	1.5	1.3	21.0	8.2	23.1
1600-1700	Pro	2.8	38.4	24.3	1.2	5.4	20.8	2.8	1.4	0.2	2.7
	Ocp	1.1	1.6	1.9	4.2	10.2	1.6	1.5	11.2	9.6	25.0
1700-1800	Pro	4.1	35.8	26.3	0.6	5.8	20.6	2.0	1.6	0.2	3.0
	Ocp	1.2	1.5	1.8	4.0	12.2	1.5	1.4	10.6	6.8	23.2
1800-1900	Pro	5.6	37.8	25.6	1.0	10.1	13.7	1.0	2.4	0.1	2.6
	Ocp	1.1	1.5	1.7	1.6	15.2	1.6	1.3	10.9	8.5	32.3
1900-2000	Pro	2.6	38.4	30.9	0.1	12.8	11.4	0.3	0.9	0.2	2.3
	Ocp	1.2	1.7	1.7	2.0	10.7	1.6	2.5	2.0	5.2	20.4
2000-2100	Pro	3.2	29.4	40.9	0.3	11.8	9.7	0.3	1.3	0.3	2.8
	Ocp	1.2	1.5	1.6	4.0	8.9	1.6	1.5	2.5	4.2	14.3
2100-2200	Pro	2.9	34.3	42.2	0.0	10.8	5.0	0.2	0.8	0.3	3.4
	Ocp	1.1	1.7	1.9	0.0	6.3	1.8	1.0	4.5	4.4	11.6
2200-2300	Pro	1.3	34.7	41.0	0.0	13.2	3.5	1.1	0.9	0.3	4.0
	Ocp	1.2	1.8	1.6	0.0	5.3	1.4	1.4	3.3	3.2	8.9
16 hours	Pro	3.0	33.6	28.8	1.1	8.0	18.8	1.8	1.9	0.2	2.8
	Ocp	1.1	1.6	1.9	3.4	10.9	1.5	1.4	10.4	7.4	29.9

**Legend**

**Pro.** Proportion of vehicles in % (Sum may not add up to 100% due to figure rounding)  
**Ocp.** Average occupancy of vehicles  
**M&H** Medium and Heavy