

YEAR

2008

LINK

CHATHAM RD N (from WUHU ST to HONG CHONG RD)

COVERAGE (B) STATION

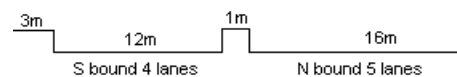
4208

ROAD NETWORK

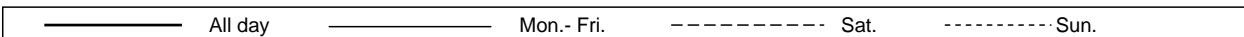
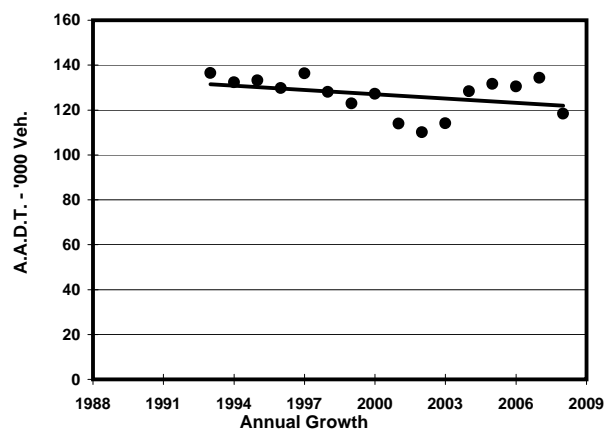
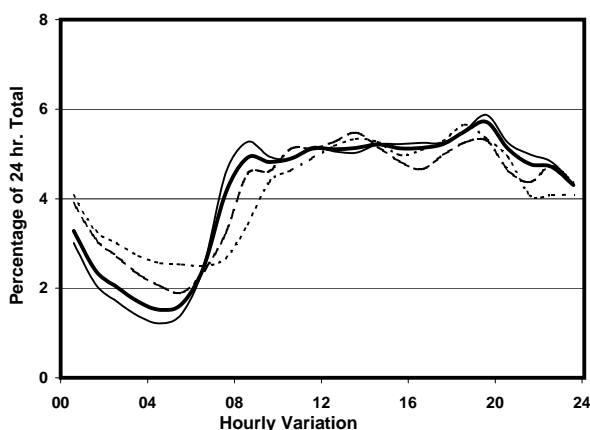
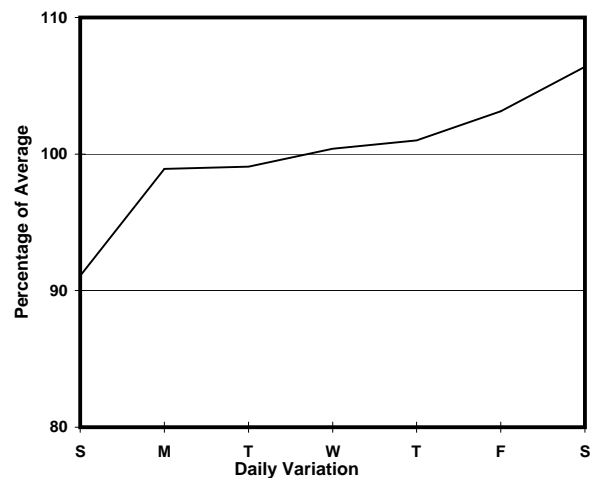
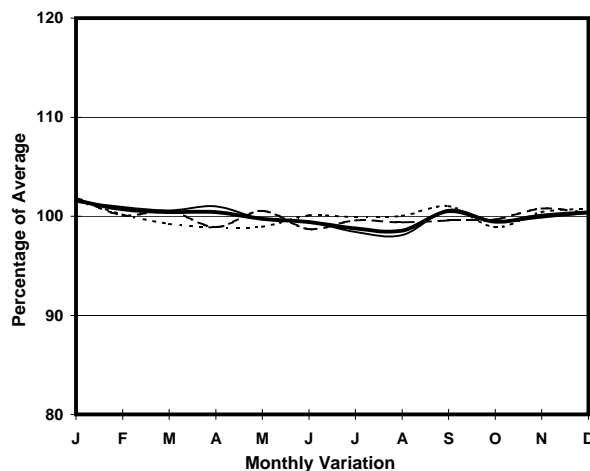
MAJOR

ROAD TYPE

PRIMARY DISTRIBUTOR



1. TRAFFIC FLOW VARIATION AND GROWTH



2. TRAFFIC CHARACTERISTICS (BY DIRECTION)

Parameter	All - Day	Mon. - Fri.	Sat.	Sun.
SOUTH BOUND				
A.A.D.T.	47660	47540	51260	46200
R 12 / 24 - %	58.2	59	55.7	56.7
R 16 / 24 - %	78.5	80	75.2	74.1
AM Peak Hour	0800-0900	0700-0800	0800-0900	0900-1000
One-way flow at AM peak hour	2470	2650	2630	2200
T - % (AM)	-	17.9	-	-
PM Peak Hour	1800-1900	1800-1900	1800-1900	1800-1900
One-way flow at PM peak hour	2340	2280	2510	2500
T - % (PM)	-	11.8	-	-
Prop.of commercial vehicles - 16 hr.	-	12.8	-	-
NORTH BOUND				
A.A.D.T.	70760	72040	75350	62120
R 12 / 24 - %	61.8	63	60	56.9
R 16 / 24 - %	82.1	83.8	78.7	76
AM Peak Hour	0900-1000	0800-0900	0900-1000	0900-1000
One-way flow at AM peak hour	3400	3690	3420	2540
T - % (AM)	-	16.9	-	-
PM Peak Hour	1800-1900	1800-1900	1800-1900	1800-1900
One-way flow at PM peak hour	4180	4330	4140	3630
T - % (PM)	-	12.2	-	-
Prop.of commercial vehicles - 16 hr.	-	15	-	-

3. OTHER INFORMATION AND COMMENT

4. Vehicle classification and occupancy - Monday to Friday

Time		Class of vehicle									
		Motor Cycle	Private Car	Taxi	Private LB	PLB	Goods veh.		Non Fr. Bus	Fr. Bus	
							Light	M & H		SD	DD
0700-0800	Pro	5.6	19.7	28.7	2.4	5.1	19.4	5.7	5.2	0.0	8.1
	Ocp	1.0	1.5	1.9	7.5	13.7	1.4	1.2	3.3	0.0	36.9
0800-0900	Pro	4.2	36.0	23.6	1.0	5.2	15.7	4.1	3.1	0.0	7.2
	Ocp	1.1	1.3	1.9	2.5	14.4	1.6	1.4	7.9	0.0	48.7
0900-1000	Pro	3.1	27.9	26.5	0.8	3.6	23.2	4.6	3.2	0.0	7.3
	Ocp	1.1	1.3	1.6	3.1	12.3	1.6	1.4	9.0	0.0	26.9
1000-1100	Pro	4.0	23.9	24.0	1.2	3.3	28.6	5.8	2.7	0.0	6.6
	Ocp	1.0	1.5	1.8	2.8	9.2	1.6	1.4	9.9	0.0	24.4
1100-1200	Pro	4.0	22.4	25.5	1.3	2.7	29.4	7.8	1.8	0.0	5.2
	Ocp	1.0	1.4	2.0	2.3	8.9	1.6	1.4	11.6	0.0	28.8
1200-1300	Pro	3.3	26.0	27.8	0.8	2.2	28.1	4.7	2.3	0.0	4.8
	Ocp	1.0	1.5	1.9	3.1	9.8	1.6	1.5	9.3	0.0	28.5
1300-1400	Pro	3.2	25.8	23.2	1.2	2.7	29.3	5.4	3.4	0.0	5.8
	Ocp	1.1	1.5	1.9	3.5	9.8	1.6	1.4	9.3	0.0	29.1
1400-1500	Pro	3.7	24.3	24.9	1.3	2.1	26.0	9.5	2.8	0.0	5.3
	Ocp	1.1	1.5	2.1	3.5	10.6	1.5	1.6	16.1	0.0	32.1
1500-1600	Pro	4.1	28.0	24.0	1.1	2.2	26.4	5.7	3.0	0.0	5.4
	Ocp	1.1	1.5	2.1	6.1	10.8	1.4	1.5	16.6	0.0	31.2
1600-1700	Pro	4.2	32.2	22.6	1.2	2.3	22.7	6.9	2.0	0.0	6.0
	Ocp	1.1	1.4	1.8	2.7	11.8	1.6	1.4	8.3	0.0	34.0
1700-1800	Pro	4.8	32.0	22.7	0.8	2.5	22.4	5.4	2.5	0.0	6.8
	Ocp	1.0	1.5	2.1	2.6	13.5	1.7	1.5	7.1	0.0	38.2
1800-1900	Pro	6.7	38.5	22.4	1.0	5.0	14.5	3.3	2.2	0.0	6.5
	Ocp	1.1	1.5	2.2	3.9	16.0	1.6	1.4	12.1	0.0	58.1
1900-2000 Peak hour	Pro	4.5	41.6	26.2	0.4	4.8	12.0	1.9	2.6	0.0	6.0
	Ocp	1.1	1.6	2.3	2.3	14.8	1.5	1.6	16.2	0.0	43.1
2000-2100	Pro	3.6	39.2	32.9	0.4	3.5	10.8	1.7	2.5	0.0	5.3
	Ocp	1.1	1.7	2.2	1.8	14.1	1.6	1.4	9.1	0.0	33.9
2100-2200	Pro	3.9	35.1	36.7	0.4	4.3	7.5	2.2	4.6	0.1	5.3
	Ocp	1.1	1.6	2.1	2.0	10.9	1.7	1.5	11.6	1.0	31.7
2200-2300	Pro	2.6	36.7	40.0	0.3	5.0	5.6	1.4	3.1	0.0	5.3
	Ocp	1.4	1.7	2.2	2.6	11.7	1.6	1.7	11.2	0.0	33.8
16 hours	Pro	4.1	30.9	27.0	0.9	3.5	19.9	4.7	2.9	0.1	6.0
	Ocp	1.1	1.5	2.0	3.7	12.5	1.6	1.5	10.4	1.0	35.5

Legend

Pro. Proportion of vehicles in % (Sum may not add up to 100% due to figure rounding)
Ocp. Average occupancy of vehicles
M&H Medium and Heavy