

YEAR

2008

LINK FAT KWONG ST (from CHUNG HAU ST to YAN FUNG ST)

COVERAGE (B) STATION

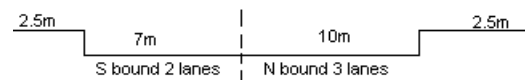
4211

ROAD NETWORK

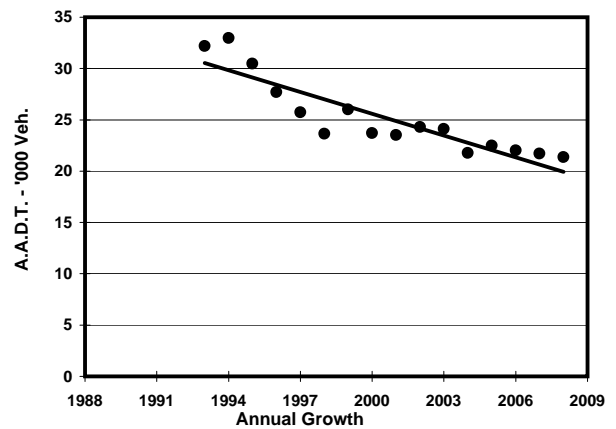
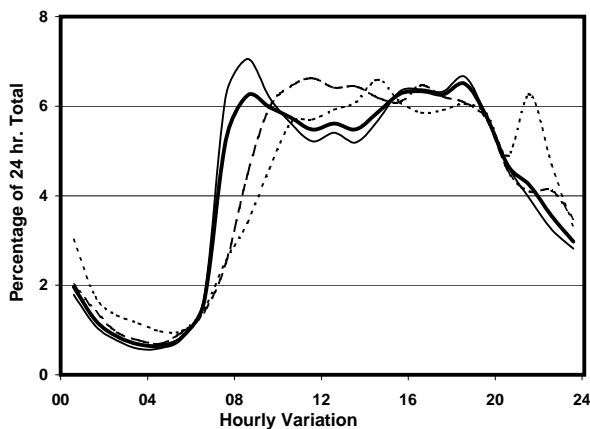
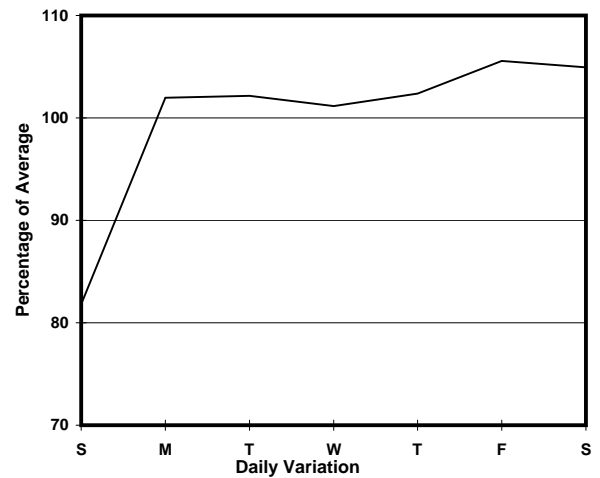
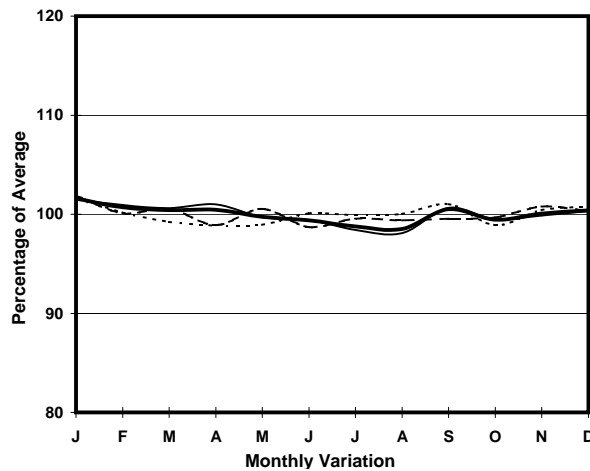
MAJOR

ROAD TYPE

DISTRICT DISTRIBUTOR



1. TRAFFIC FLOW VARIATION AND GROWTH



2. TRAFFIC CHARACTERISTICS (BY DIRECTION)

Parameter	All - Day	Mon. - Fri.	Sat.	Sun.
SOUTH BOUND				
A.A.D.T.	11560	12020	12320	9300
R 12 / 24 - %	72.7	73.9	72.1	65.5
R 16 / 24 - %	90.1	90.7	89.8	87.3
AM Peak Hour	0800-0900	0800-0900	0900-1000	0900-1000
One-way flow at AM peak hour	800	950	810	430
T - % (AM)	-	6.3	-	-
PM Peak Hour	1800-1900	1600-1700	1700-1800	1800-1900
One-way flow at PM peak hour	720	760	730	620
T - % (PM)	-	6.5	-	-
Prop.of commercial vehicles - 16 hr.	-	6.2	-	-
NORTH BOUND				
A.A.D.T.	9820	10140	10340	8360
R 12 / 24 - %	69	70.3	67.3	63.1
R 16 / 24 - %	88.1	88.9	86.7	84.6
AM Peak Hour	0800-0900	0700-0800	0900-1000	0900-1000
One-way flow at AM peak hour	530	650	540	390
T - % (AM)	-	6.9	-	-
PM Peak Hour	1800-1900	1800-1900	1600-1700	1600-1700
One-way flow at PM peak hour	670	720	780	500
T - % (PM)	-	5.2	-	-
Prop.of commercial vehicles - 16 hr.	-	7.1	-	-

3. OTHER INFORMATION AND COMMENT

4. Vehicle classification and occupancy - Monday to Friday

Time		Class of vehicle									
		Motor Cycle	Private Car	Taxi	Private LB	PLB	Goods veh.		Non Fr. Bus	Fr. Bus	
							Light	M & H		SD	DD
0700-0800	Pro	1.9	8.3	51.6	4.2	12.8	12.8	0.3	4.8	0.0	3.2
	Ocp	1.3	1.3	2.3	5.5	13.1	1.7	1.0	8.6	0.0	36.3
0800-0900 Peak hour	Pro	1.4	44.3	23.7	4.5	8.6	9.8	0.8	3.9	0.0	3.0
	Ocp	1.0	1.4	1.9	4.4	14.5	1.7	1.3	8.7	0.0	33.3
0900-1000	Pro	1.4	20.7	39.4	3.5	10.6	18.2	1.9	1.4	0.0	2.9
	Ocp	1.0	1.6	2.0	4.2	10.7	2.0	2.0	5.0	0.0	17.1
1000-1100	Pro	3.5	25.4	32.7	3.2	7.9	23.2	0.6	0.3	0.0	3.1
	Ocp	1.0	1.5	1.8	3.2	9.4	1.5	1.5	1.0	0.0	10.3
1100-1200	Pro	3.3	27.6	31.6	1.5	9.5	21.5	1.1	1.1	0.0	2.9
	Ocp	1.0	1.4	1.6	2.5	9.1	1.5	2.0	1.3	0.0	10.5
1200-1300	Pro	3.0	29.9	27.3	4.3	9.6	17.3	2.7	3.3	0.0	2.6
	Ocp	1.1	1.6	1.8	7.8	8.7	1.8	2.0	14.3	0.0	10.8
1300-1400	Pro	4.0	24.8	35.9	1.3	8.4	18.5	1.7	2.3	0.0	3.0
	Ocp	1.0	1.5	1.9	3.3	11.1	1.7	1.6	15.4	0.0	14.3
1400-1500	Pro	2.8	32.4	28.8	1.1	8.9	18.5	3.2	1.4	0.0	2.9
	Ocp	1.1	1.7	2.1	2.7	12.2	1.5	1.7	11.3	0.0	13.2
1500-1600	Pro	1.7	25.6	32.6	4.7	7.3	21.6	1.3	2.3	0.0	2.8
	Ocp	1.0	1.4	2.3	2.3	13.9	1.7	1.5	16.9	0.0	16.1
1600-1700	Pro	0.9	26.7	34.5	3.3	7.5	18.6	0.6	5.1	0.0	2.8
	Ocp	1.0	1.5	2.0	3.3	13.1	1.5	1.5	14.5	0.0	16.1
1700-1800	Pro	2.5	29.0	29.0	5.0	9.7	16.5	1.9	3.1	0.0	3.5
	Ocp	1.1	1.6	2.2	3.9	14.0	1.7	2.3	12.7	0.0	21.6
1800-1900	Pro	1.2	36.0	35.4	1.5	11.3	8.9	0.3	3.3	0.0	2.0
	Ocp	1.0	1.5	2.1	3.6	15.7	1.5	1.0	13.2	0.0	32.0
1900-2000	Pro	4.3	37.6	32.7	1.2	8.9	11.0	0.3	1.2	0.0	2.7
	Ocp	1.1	1.7	1.8	2.8	12.0	1.7	2.0	8.0	0.0	25.9
2000-2100	Pro	2.6	36.7	38.2	1.1	9.4	6.0	1.1	1.9	0.0	3.1
	Ocp	1.0	1.6	2.0	2.0	11.4	1.3	1.0	6.6	0.0	13.3
2100-2200	Pro	0.9	39.2	36.9	0.5	11.3	5.4	0.5	1.4	0.0	4.1
	Ocp	1.5	1.7	2.3	5.0	11.2	1.8	1.0	1.0	0.0	11.9
2200-2300	Pro	4.2	30.6	37.8	1.3	15.3	4.2	0.9	2.1	0.0	3.6
	Ocp	1.0	1.9	2.1	1.7	10.4	1.4	1.0	1.2	0.0	12.3
16 hours	Pro	2.4	29.5	34.1	2.7	9.7	14.8	1.2	2.5	0.0	3.0
	Ocp	1.1	1.6	2.0	4.0	12.0	1.6	1.7	10.6	0.0	18.7

Legend

Pro. Proportion of vehicles in % (Sum may not add up to 100% due to figure rounding)
Ocp. Average occupancy of vehicles
M&H Medium and Heavy