

YEAR 2008

COVERAGE (B) STATION 4218

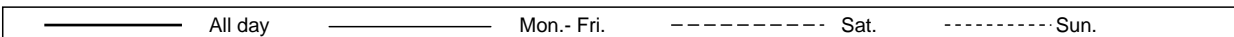
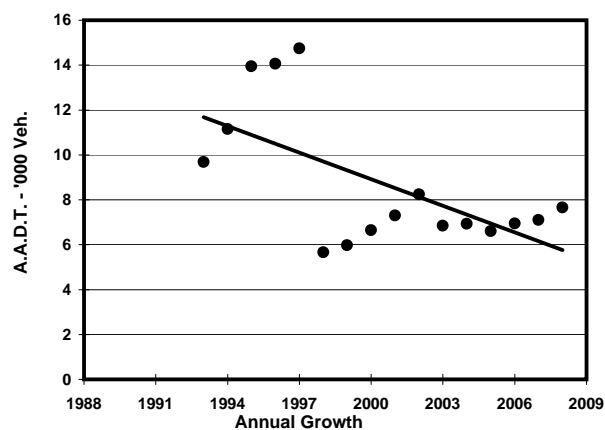
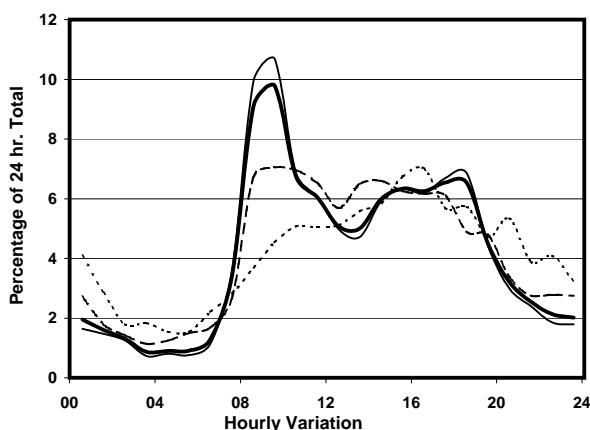
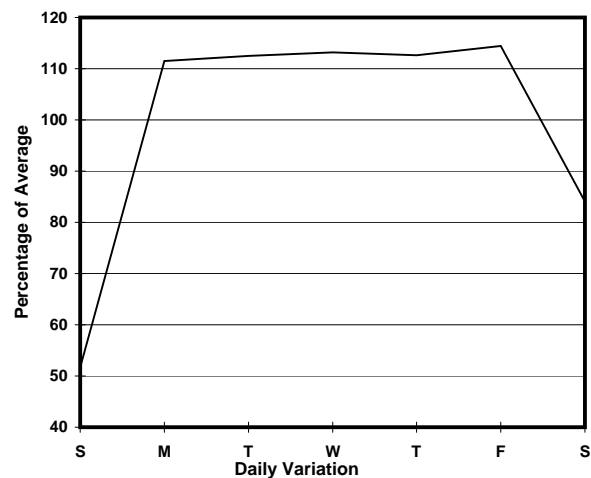
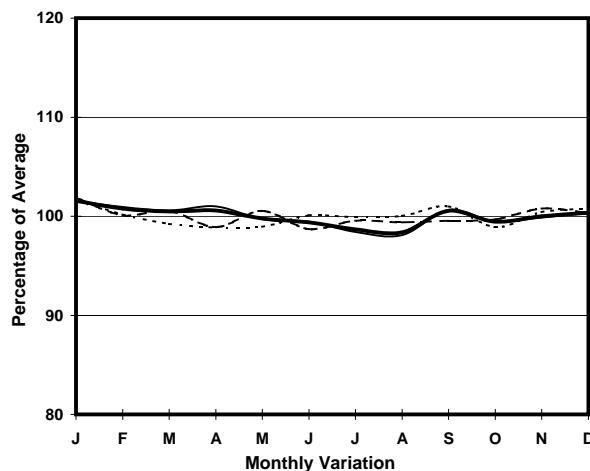
ROAD NETWORK MAJOR

ROAD TYPE DISTRICT DISTRIBUTOR

LINK EASTERN RD & KAI SHING ST (from CONCORDE RD to KAI CHEUNG RD)



1. TRAFFIC FLOW VARIATION AND GROWTH



2. TRAFFIC CHARACTERISTICS (BY DIRECTION)

Parameter	All - Day	Mon. - Fri.	Sat.	Sun.
SOUTH BOUND				
A.A.D.T.	4740	5500	3990	2550
R 12 / 24 - %	76.9	78.9	71.1	63.5
R 16 / 24 - %	88.8	90.1	85	81.8
AM Peak Hour	0900-1000	0900-1000	0900-1000	0900-1000
One-way flow at AM peak hour	560	710	330	110
T - % (AM)	-	7.7	-	-
PM Peak Hour	1700-1800	1700-1800	1700-1800	1600-1700
One-way flow at PM peak hour	300	350	240	170
T - % (PM)	-	11.4	-	-
Prop.of commercial vehicles - 16 hr.	-	7.5	-	-
NORTH BOUND				
A.A.D.T.	2920	3380	2630	1510
R 12 / 24 - %	76.7	78.4	73.6	61.7
R 16 / 24 - %	89.6	90.9	87	79.5
AM Peak Hour	0900-1000	0900-1000	0800-0900	0900-1000
One-way flow at AM peak hour	200	240	160	80
T - % (AM)	-	8.2	-	-
PM Peak Hour	1800-1900	1800-1900	1600-1700	1600-1700
One-way flow at PM peak hour	280	360	170	120
T - % (PM)	-	3.2	-	-
Prop.of commercial vehicles - 16 hr.	-	15.5	-	-

3. OTHER INFORMATION AND COMMENT

4. Vehicle classification and occupancy - Monday to Friday

Time		Class of vehicle									
		Motor Cycle	Private Car	Taxi	Private LB	PLB	Goods veh.		Non Fr. Bus	Fr. Bus	
							Light	M & H		SD	DD
0700-0800	Pro	2.1	2.1	40.6	6.4	0.0	21.4	8.6	17.1	0.0	1.6
	Ocp	1.0	1.0	1.8	11.0	0.0	1.2	1.0	9.8	0.0	51.3
0800-0900	Pro	1.6	22.7	38.5	1.1	0.0	29.5	2.6	3.7	0.0	0.4
	Ocp	1.7	1.3	2.0	6.0	0.0	1.7	1.2	28.3	0.0	58.3
0900-1000 Peak hour	Pro	3.2	40.7	29.6	1.9	0.0	16.7	4.2	3.2	0.0	0.5
	Ocp	1.0	1.3	1.8	1.0	0.0	1.7	1.9	3.4	0.0	15.5
1000-1100	Pro	1.3	45.7	18.7	3.2	0.0	20.6	6.4	3.2	0.0	1.0
	Ocp	1.0	1.5	1.8	2.4	0.0	1.4	1.3	5.6	0.0	7.0
1100-1200	Pro	0.0	38.2	21.4	2.3	0.0	25.2	9.9	3.1	0.0	0.0
	Ocp	0.0	1.3	1.5	2.0	0.0	1.4	1.8	1.5	0.0	0.0
1200-1300	Pro	4.7	33.6	26.2	7.5	0.0	10.3	10.3	7.5	0.0	0.0
	Ocp	1.0	1.7	2.3	4.6	0.0	1.6	1.2	4.0	0.0	0.0
1300-1400	Pro	2.0	28.3	28.3	1.0	0.0	21.2	15.2	4.0	0.0	0.0
	Ocp	1.0	1.3	2.0	1.0	0.0	1.6	1.1	2.5	0.0	0.0
1400-1500	Pro	4.6	32.1	24.4	3.8	0.0	16.0	14.5	4.6	0.0	0.0
	Ocp	1.0	1.5	1.9	2.8	0.0	1.6	1.5	16.3	0.0	0.0
1500-1600	Pro	4.5	37.1	29.5	1.5	0.0	17.4	6.8	3.0	0.0	0.0
	Ocp	1.0	1.6	1.6	10.0	0.0	1.6	1.0	3.5	0.0	0.0
1600-1700	Pro	5.0	39.1	29.1	1.7	0.8	21.6	2.5	0.0	0.0	0.2
	Ocp	1.0	1.4	1.6	2.0	1.0	1.8	1.7	0.0	0.0	16.0
1700-1800	Pro	8.6	38.1	25.9	2.9	0.0	14.4	5.8	3.6	0.0	0.7
	Ocp	1.1	1.7	1.5	1.8	0.0	1.5	1.4	1.8	0.0	20.5
1800-1900	Pro	4.9	40.8	34.3	0.8	4.1	9.8	2.4	2.4	0.0	0.4
	Ocp	1.0	1.3	2.3	2.0	17.0	1.6	1.0	1.3	0.0	30.5
1900-2000	Pro	6.9	44.8	29.9	0.0	2.3	6.9	6.9	1.2	0.0	1.2
	Ocp	1.0	1.6	1.6	0.0	17.0	1.7	1.5	1.0	0.0	16.0
2000-2100	Pro	9.4	28.2	52.3	1.3	0.0	4.0	0.0	4.0	0.0	0.7
	Ocp	1.0	1.6	1.6	2.0	0.0	1.0	0.0	1.0	0.0	11.0
2100-2200	Pro	0.0	41.9	11.6	4.7	32.6	7.0	2.3	0.0	0.0	0.0
	Ocp	0.0	2.0	1.6	1.5	2.1	2.0	1.0	0.0	0.0	0.0
2200-2300	Pro	5.3	23.7	57.9	5.3	0.0	0.0	5.3	2.6	0.0	0.0
	Ocp	1.5	2.1	1.6	1.5	0.0	0.0	1.5	1.0	0.0	0.0
16 hours	Pro	3.9	35.2	29.7	2.5	1.2	17.1	6.4	3.6	0.0	0.4
	Ocp	1.1	1.5	1.8	3.6	6.8	1.6	1.4	7.7	0.0	23.4

Legend

Pro. Proportion of vehicles in % (Sum may not add up to 100% due to figure rounding)
Ocp. Average occupancy of vehicles
M&H Medium and Heavy