

YEAR

2008

LINK

HOI WANG RD (from HOI TING RD to CHERRY ST RA)

COVERAGE (B) STATION

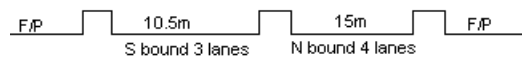
4220

ROAD NETWORK

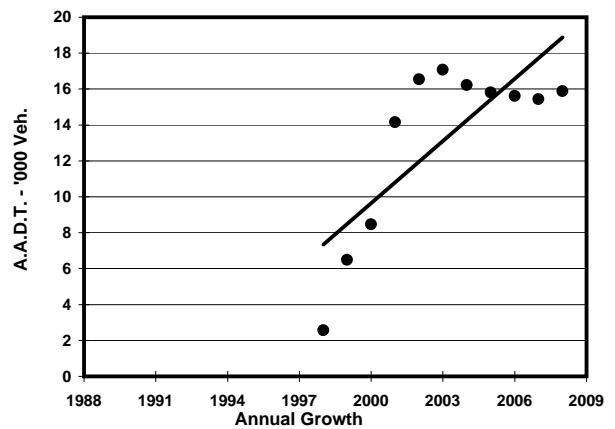
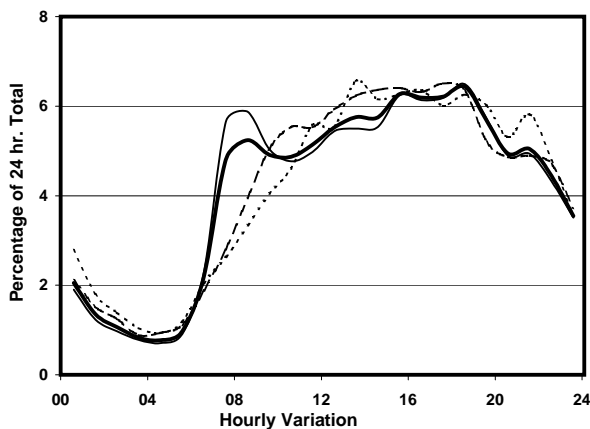
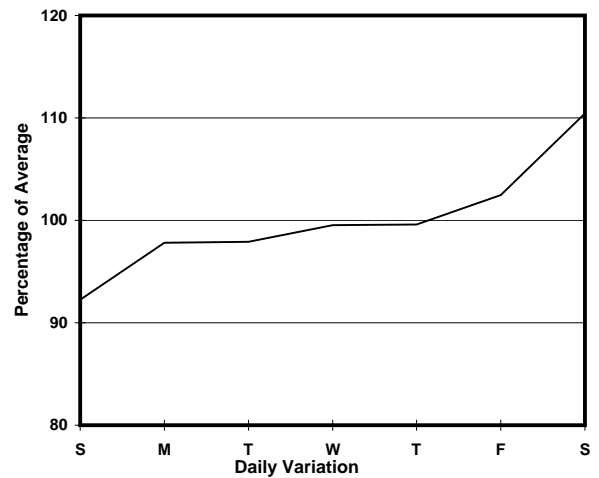
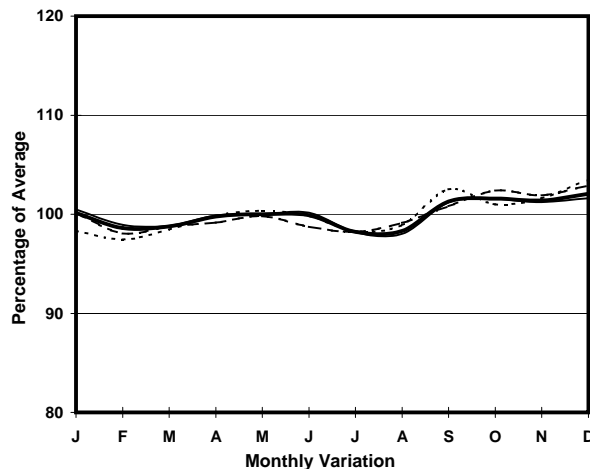
MAJOR

ROAD TYPE

PRIMARY DISTRIBUTOR



1. TRAFFIC FLOW VARIATION AND GROWTH



2. TRAFFIC CHARACTERISTICS (BY DIRECTION)

Parameter	All - Day	Mon. - Fri.	Sat.	Sun.
SOUTH BOUND				
A.A.D.T.	7950	7990	8730	7230
R 12 / 24 - %	66.2	66.9	66.1	63.1
R 16 / 24 - %	86.8	87.4	86.3	84.8
AM Peak Hour	0800-0900	0700-0800	0900-1000	0900-1000
One-way flow at AM peak hour	390	440	430	310
T - % (AM)	-	31	-	-
PM Peak Hour	1800-1900	1800-1900	1800-1900	1800-1900
One-way flow at PM peak hour	550	560	580	470
T - % (PM)	-	13.7	-	-
Prop.of commercial vehicles - 16 hr.	-	18.6	-	-
NORTH BOUND				
A.A.D.T.	7940	7880	8900	7480
R 12 / 24 - %	68	68.8	67.7	63.6
R 16 / 24 - %	87.6	88	86.9	85.8
AM Peak Hour	0800-0900	0800-0900	0900-1000	0900-1000
One-way flow at AM peak hour	440	500	460	290
T - % (AM)	-	19.3	-	-
PM Peak Hour	1600-1700	1600-1700	1700-1800	1600-1700
One-way flow at PM peak hour	520	510	600	530
T - % (PM)	-	18.2	-	-
Prop.of commercial vehicles - 16 hr.	-	19.7	-	-

3. OTHER INFORMATION AND COMMENT

4. Vehicle classification and occupancy - Monday to Friday

Time		Class of vehicle									
		Motor Cycle	Private Car	Taxi	Private LB	PLB	Goods veh.		Non Fr. Bus	Fr. Bus	
							Light	M & H		SD	DD
0700-0800	Pro	0.0	9.6	26.9	4.8	11.4	16.2	2.4	16.8	0.0	12.0
	Ocp	0.0	1.4	1.9	5.6	9.3	1.3	1.0	18.3	0.0	21.0
0800-0900	Pro	0.8	32.2	25.4	2.0	8.5	11.7	2.8	7.3	0.0	9.4
	Ocp	1.0	1.4	1.4	6.8	11.6	1.6	1.6	28.7	0.0	17.0
0900-1000	Pro	1.5	23.5	22.5	0.5	8.3	24.0	4.4	3.4	0.0	11.9
	Ocp	1.0	1.4	1.4	8.0	6.1	1.7	2.1	30.3	0.0	6.5
1000-1100	Pro	1.7	17.2	18.9	1.1	12.6	30.4	2.9	3.4	0.0	11.6
	Ocp	1.0	1.7	1.8	2.0	5.5	1.7	2.0	36.2	0.0	6.1
1100-1200	Pro	1.8	11.4	22.1	2.4	13.2	26.9	7.2	3.6	0.0	11.5
	Ocp	1.0	1.3	1.4	1.5	5.2	1.8	1.3	29.3	0.0	7.3
1200-1300	Pro	2.5	20.1	16.6	0.5	11.0	23.6	6.0	10.0	0.0	9.7
	Ocp	1.0	1.6	1.6	6.0	6.1	1.6	1.5	9.0	0.0	6.3
1300-1400	Pro	1.6	20.3	13.4	1.1	10.7	30.5	8.6	3.2	0.0	10.6
	Ocp	1.0	1.3	1.6	3.5	7.3	1.7	1.5	14.5	0.0	6.9
1400-1500	Pro	1.9	28.1	17.9	0.5	7.7	27.6	3.4	3.4	0.0	9.4
	Ocp	1.5	1.6	1.5	1.0	5.4	1.5	2.0	18.9	0.0	8.2
1500-1600	Pro	1.8	22.2	20.4	0.9	7.3	26.8	4.5	6.8	0.0	9.2
	Ocp	1.3	1.5	1.4	1.5	6.4	1.4	1.8	12.0	0.0	10.5
1600-1700	Pro	1.7	22.9	20.8	3.7	11.2	20.8	3.3	6.2	0.0	9.4
	Ocp	1.0	1.6	1.4	8.0	7.4	1.8	1.5	15.3	0.0	9.3
1700-1800	Pro	4.1	23.3	16.9	2.7	12.3	19.2	3.7	7.3	0.0	10.5
	Ocp	1.0	1.4	1.6	3.5	6.8	1.5	1.8	20.2	0.0	10.3
1800-1900 Peak hour	Pro	2.4	35.7	26.1	0.8	9.2	10.8	2.8	3.6	0.0	8.4
	Ocp	1.2	1.7	1.9	5.5	10.7	1.7	1.3	32.7	0.0	12.4
1900-2000	Pro	5.8	41.9	21.9	0.0	10.2	6.8	0.5	3.4	0.0	9.5
	Ocp	1.2	1.3	1.7	0.0	10.7	1.5	1.0	43.0	0.0	13.1
2000-2100	Pro	4.0	36.3	31.8	0.0	11.6	3.5	1.0	3.0	0.0	8.7
	Ocp	1.1	1.5	1.7	0.0	5.3	1.4	1.0	33.7	0.0	7.5
2100-2200	Pro	4.4	25.7	28.2	0.0	13.8	9.4	2.5	4.4	0.0	11.6
	Ocp	1.3	1.6	1.6	0.0	4.5	1.3	1.3	19.9	0.0	8.3
2200-2300	Pro	3.8	36.8	25.9	0.0	15.7	2.7	0.5	3.8	0.0	10.8
	Ocp	1.1	1.6	1.5	0.0	6.2	1.4	1.0	30.4	0.0	7.9
16 hours	Pro	2.5	26.0	22.2	1.3	10.7	18.0	3.5	5.6	0.0	10.1
	Ocp	1.1	1.5	1.6	5.1	7.1	1.6	1.6	21.8	0.0	10.0

Legend

Pro. Proportion of vehicles in % (Sum may not add up to 100% due to figure rounding)
Ocp. Average occupancy of vehicles
M&H Medium and Heavy