

YEAR

2008

LINK SOY ST (from SAI YEUNG CHOI ST S to YIM PO FONG ST)

COVERAGE (B) STATION

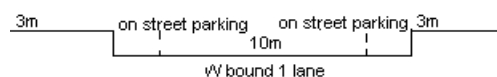
4403

ROAD NETWORK

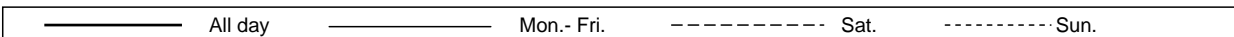
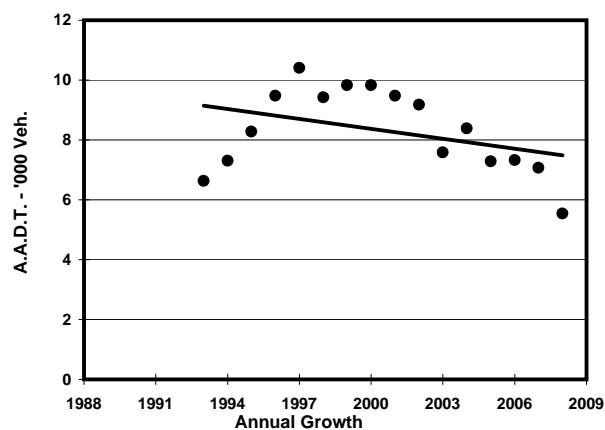
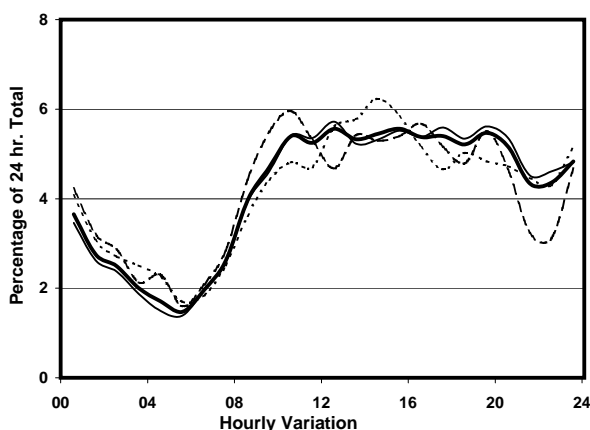
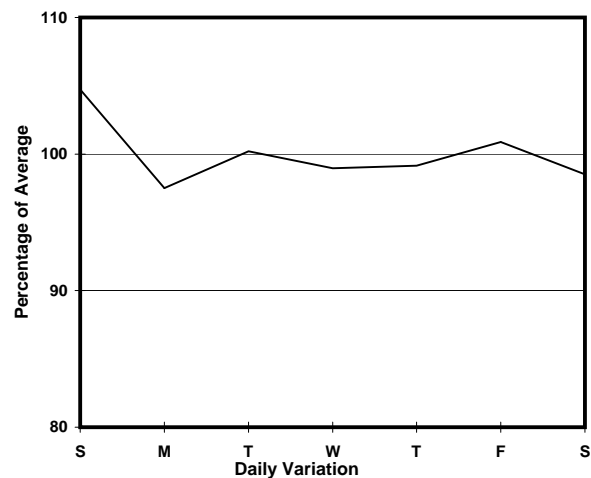
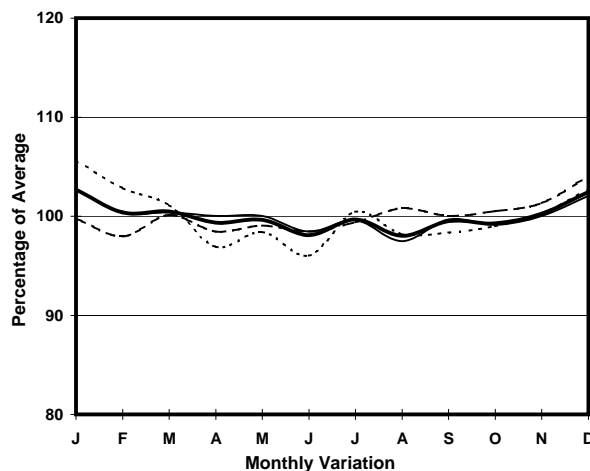
MINOR

ROAD TYPE

LOCAL DISTRIBUTOR



1. TRAFFIC FLOW VARIATION AND GROWTH



2. TRAFFIC CHARACTERISTICS (BY DIRECTION)

| Parameter | All - Day | Mon. - Fri. | Sat. | Sun. |
|--------------------------------------|-----------|-------------|-----------|-----------|
| WEST BOUND | | | | |
| A.A.D.T. | 5540 | 5490 | 5440 | 5790 |
| R 12 / 24 - % | 59.8 | 60 | 60.4 | 58.4 |
| R 16 / 24 - % | 79.1 | 80.1 | 76.9 | 76.7 |
| AM Peak Hour | 0900-1000 | 0900-1000 | 0900-1000 | 0900-1000 |
| One-way flow at AM peak hour | 260 | 250 | 300 | 260 |
| T - % (AM) | - | 4.7 | - | - |
| PM Peak Hour | 1700-1800 | 1700-1800 | 1600-1700 | 1600-1700 |
| One-way flow at PM peak hour | 300 | 310 | 310 | 300 |
| T - % (PM) | - | 9.1 | - | - |
| Prop.of commercial vehicles - 16 hr. | - | - | - | - |
| A.A.D.T. | - | - | - | - |
| R 12 / 24 - % | - | - | - | - |
| R 16 / 24 - % | - | - | - | - |
| AM Peak Hour | - | - | - | - |
| One-way flow at AM peak hour | - | - | - | - |
| T - % (AM) | - | - | - | - |
| PM Peak Hour | - | - | - | - |
| One-way flow at PM peak hour | - | - | - | - |
| T - % (PM) | - | - | - | - |
| Prop.of commercial vehicles - 16 hr. | - | - | - | - |

3. OTHER INFORMATION AND COMMENT

4. Vehicle classification and occupancy - Monday to Friday

| Time | | Class of vehicle | | | | | | | | | |
|------------------------|-----|------------------|----------------|------|---------------|------|------------|-------|----------------|---------|-----|
| | | Motor Cycle | Private Car | Taxi | Private LB | PLB | Goods veh. | | Non Fr. Bus | Fr. Bus | |
| | | | | | | | Light | M & H | | SD | DD |
| 0700-0800 | Pro | 0.0 | 6.5 | 16.1 | 6.5 | 48.4 | 16.1 | 0.0 | 6.5 | 0.0 | 0.0 |
| | Ocp | 0.0 | 1.5 | 1.2 | 11.5 | 9.3 | 1.2 | 0.0 | 2.0 | 0.0 | 0.0 |
| 0800-0900 | Pro | 5.4 | 16.1 | 23.2 | 5.4 | 23.2 | 12.5 | 0.0 | 14.3 | 0.0 | 0.0 |
| | Ocp | 1.0 | 1.2 | 1.7 | 9.0 | 10.5 | 1.9 | 0.0 | 7.1 | 0.0 | 0.0 |
| 0900-1000 | Pro | 0.0 | 25.0 | 39.1 | 0.0 | 20.3 | 10.9 | 3.1 | 1.6 | 0.0 | 0.0 |
| | Ocp | 0.0 | 1.3 | 1.4 | 0.0 | 7.9 | 1.7 | 2.0 | 2.0 | 0.0 | 0.0 |
| 1000-1100 | Pro | 1.4 | 12.3 | 42.5 | 0.0 | 19.2 | 20.5 | 1.4 | 2.7 | 0.0 | 0.0 |
| | Ocp | 1.0 | 1.6 | 1.3 | 0.0 | 6.1 | 1.7 | 2.0 | 14.5 | 0.0 | 0.0 |
| 1100-1200 | Pro | 4.3 | 21.7 | 26.1 | 1.5 | 17.4 | 24.6 | 0.0 | 4.3 | 0.0 | 0.0 |
| | Ocp | 1.3 | 1.5 | 1.3 | 1.0 | 6.5 | 1.6 | 0.0 | 2.7 | 0.0 | 0.0 |
| 1200-1300 Peak hour | Pro | 1.4 | 9.5 | 45.9 | 0.0 | 16.2 | 21.6 | 2.7 | 2.7 | 0.0 | 0.0 |
| | Ocp | 1.0 | 1.9 | 1.5 | 0.0 | 6.6 | 1.8 | 1.0 | 5.5 | 0.0 | 0.0 |
| 1300-1400 | Pro | 5.7 | 20.0 | 42.9 | 0.0 | 14.3 | 15.7 | 0.0 | 1.4 | 0.0 | 0.0 |
| | Ocp | 1.5 | 2.0 | 1.5 | 0.0 | 10.1 | 1.6 | 0.0 | 5.0 | 0.0 | 0.0 |
| 1400-1500 | Pro | 1.7 | 31.0 | 24.1 | 0.0 | 13.8 | 22.4 | 1.7 | 5.2 | 0.0 | 0.0 |
| | Ocp | 1.0 | 1.2 | 1.3 | 0.0 | 8.9 | 1.6 | 1.0 | 16.0 | 0.0 | 0.0 |
| 1500-1600 | Pro | 4.8 | 31.3 | 32.5 | 2.4 | 4.8 | 14.5 | 1.2 | 8.4 | 0.0 | 0.0 |
| | Ocp | 1.0 | 1.5 | 1.7 | 1.0 | 9.8 | 1.8 | 1.0 | 5.6 | 0.0 | 0.0 |
| 1600-1700 | Pro | 10.6 | 22.7 | 24.2 | 1.5 | 10.6 | 18.2 | 3.0 | 9.1 | 0.0 | 0.0 |
| | Ocp | 1.3 | 1.7 | 1.9 | 6.0 | 8.4 | 1.8 | 2.5 | 9.2 | 0.0 | 0.0 |
| 1700-1800 | Pro | 15.6 | 27.3 | 15.6 | 1.3 | 18.2 | 13.0 | 2.6 | 6.5 | 0.0 | 0.0 |
| | Ocp | 1.2 | 1.6 | 2.0 | 8.0 | 10.6 | 1.6 | 1.5 | 13.4 | 0.0 | 0.0 |
| 1800-1900 | Pro | 17.4 | 26.7 | 24.4 | 1.2 | 16.3 | 10.5 | 0.0 | 3.5 | 0.0 | 0.0 |
| | Ocp | 1.1 | 1.6 | 2.0 | 4.0 | 8.9 | 2.1 | 0.0 | 3.7 | 0.0 | 0.0 |
| 1900-2000 | Pro | 6.3 | 40.5 | 25.3 | 0.0 | 13.9 | 8.9 | 0.0 | 5.1 | 0.0 | 0.0 |
| | Ocp | 1.4 | 1.5 | 1.6 | 0.0 | 6.4 | 1.6 | 0.0 | 7.0 | 0.0 | 0.0 |
| 2000-2100 | Pro | 6.9 | 31.5 | 38.4 | 0.0 | 15.1 | 5.5 | 0.0 | 2.7 | 0.0 | 0.0 |
| | Ocp | 1.0 | 1.6 | 1.4 | 0.0 | 8.3 | 1.8 | 0.0 | 16.5 | 0.0 | 0.0 |
| 2100-2200 | Pro | 8.1 | 40.3 | 32.3 | 0.0 | 16.1 | 1.6 | 0.0 | 1.6 | 0.0 | 0.0 |
| | Ocp | 1.2 | 1.9 | 1.8 | 0.0 | 7.7 | 1.0 | 0.0 | 15.0 | 0.0 | 0.0 |
| 2200-2300 | Pro | 3.9 | 26.3 | 44.7 | 0.0 | 14.5 | 3.9 | 0.0 | 6.6 | 0.0 | 0.0 |
| | Ocp | 1.7 | 1.7 | 2.0 | 0.0 | 7.7 | 2.7 | 0.0 | 9.6 | 0.0 | 0.0 |
| 16 hours | Pro | 6.3 | 25.1 | 31.7 | 1.0 | 16.3 | 13.6 | 1.0 | 5.0 | 0.0 | 0.0 |
| | Ocp | 1.2 | 1.6 | 1.6 | 6.5 | 8.3 | 1.7 | 1.6 | 8.4 | 0.0 | 0.0 |

Legend

Pro. Proportion of vehicles in % (Sum may not add up to 100% due to figure rounding)
Ocp. Average occupancy of vehicles
M&H Medium and Heavy