

YEAR

2008

LINK

LAI KING HILL RD (from PMH INT to KING CHO RD)

COVERAGE (B) STATION

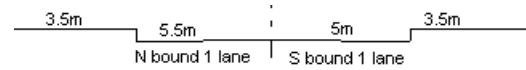
6204

ROAD NETWORK

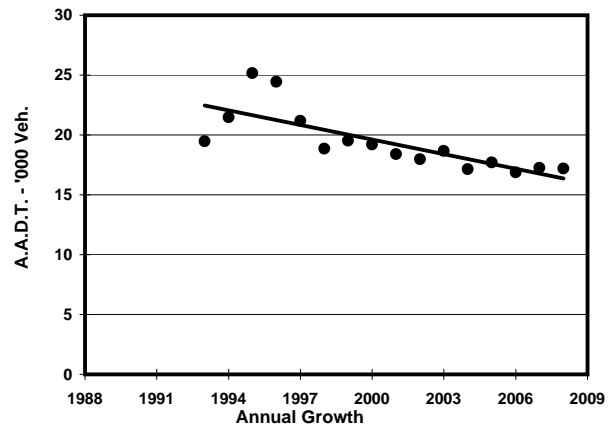
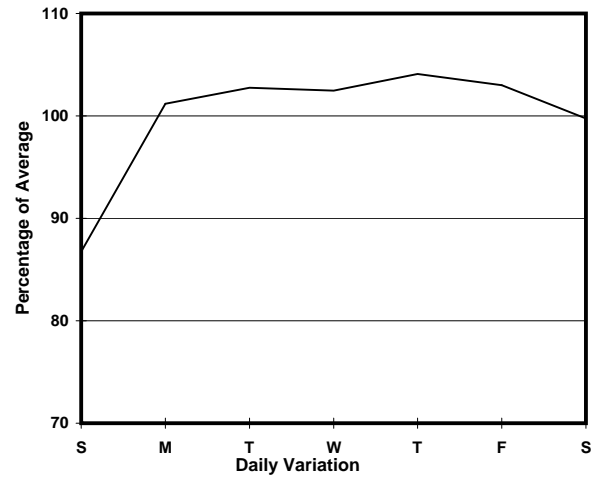
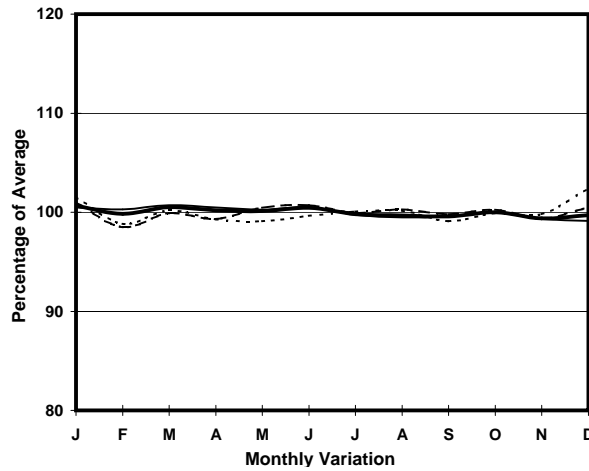
MAJOR

ROAD TYPE

DISTRICT DISTRIBUTOR



1. TRAFFIC FLOW VARIATION AND GROWTH



2. TRAFFIC CHARACTERISTICS (BY DIRECTION)

Parameter	All - Day	Mon. - Fri.	Sat.	Sun.
SOUTH BOUND				
A.A.D.T.	8980	9270	9120	7860
R 12 / 24 - %	64.3	66.2	60.3	57.1
R 16 / 24 - %	80.6	81.8	78.4	75.7
AM Peak Hour	0800-0900	0800-0900	0900-1000	0900-1000
One-way flow at AM peak hour	660	760	650	350
T - % (AM)	-	6.6	-	-
PM Peak Hour	1700-1800	1700-1800	1700-1800	1700-1800
One-way flow at PM peak hour	470	470	470	460
T - % (PM)	-	6.2	-	-
Prop.of commercial vehicles - 16 hr.	-	7.2	-	-
NORTH BOUND				
A.A.D.T.	8220	8520	8170	7170
R 12 / 24 - %	61.3	63.2	59	51.9
R 16 / 24 - %	80.3	81.5	79	74.3
AM Peak Hour	0800-0900	0800-0900	0900-1000	0900-1000
One-way flow at AM peak hour	450	510	440	300
T - % (AM)	-	7.7	-	-
PM Peak Hour	1800-1900	1800-1900	1800-1900	1800-1900
One-way flow at PM peak hour	460	480	480	370
T - % (PM)	-	6.8	-	-
Prop.of commercial vehicles - 16 hr.	-	8.2	-	-

3. OTHER INFORMATION AND COMMENT

4. Vehicle classification and occupancy - Monday to Friday

Time		Class of vehicle									
		Motor Cycle	Private Car	Taxi	Private LB	PLB	Goods veh.		Non Fr. Bus	Fr. Bus	
							Light	M & H		SD	DD
0700-0800	Pro	5.0	9.5	38.3	2.0	18.4	14.4	0.5	6.0	0.5	5.5
	Ocp	1.1	1.3	1.7	8.3	7.8	1.4	1.0	14.6	14.3	20.0
0800-0900 Peak hour	Pro	2.3	22.9	46.3	1.7	11.7	8.0	0.0	3.1	0.3	3.6
	Ocp	1.0	1.4	1.9	6.2	9.1	1.8	0.0	10.7	9.5	15.6
0900-1000	Pro	3.5	10.9	51.3	3.5	12.7	11.6	1.4	0.4	0.4	4.4
	Ocp	1.0	1.5	1.5	3.2	8.1	1.7	1.8	1.0	4.5	11.0
1000-1100	Pro	1.3	7.7	56.2	3.0	12.8	11.5	3.0	0.0	0.4	4.3
	Ocp	1.0	1.6	1.6	2.7	9.6	1.9	2.1	0.0	5.5	10.6
1100-1200	Pro	3.1	12.2	45.9	2.5	16.8	12.7	2.0	0.0	0.4	4.3
	Ocp	1.2	1.5	1.6	2.8	9.0	1.6	2.3	0.0	11.0	11.6
1200-1300	Pro	1.7	20.6	40.3	2.6	13.7	12.0	2.1	2.6	0.4	4.0
	Ocp	1.0	1.7	1.6	2.2	10.1	1.6	1.6	17.3	6.0	11.1
1300-1400	Pro	3.2	18.5	40.8	2.3	15.3	11.1	1.4	2.3	0.5	4.5
	Ocp	1.0	1.5	1.5	2.0	10.5	1.7	1.0	2.2	11.3	12.3
1400-1500	Pro	2.7	19.9	42.5	5.0	14.0	9.0	1.4	0.5	0.5	4.6
	Ocp	1.2	1.6	1.6	3.2	9.7	1.5	2.7	3.0	8.8	11.2
1500-1600	Pro	2.4	10.8	44.1	5.9	16.2	11.8	0.5	3.4	0.5	4.5
	Ocp	1.0	1.5	1.4	3.0	9.8	1.7	2.0	15.1	7.0	11.3
1600-1700	Pro	4.4	13.1	37.2	3.9	14.0	15.5	0.5	5.8	0.5	5.2
	Ocp	1.0	1.7	1.5	4.6	8.6	1.7	1.0	9.8	7.0	10.8
1700-1800	Pro	4.0	17.0	39.9	1.3	17.5	12.1	0.0	2.2	0.4	5.4
	Ocp	1.1	1.4	1.7	4.3	12.0	1.6	0.0	10.8	9.5	16.6
1800-1900	Pro	5.4	25.6	45.1	1.7	11.6	5.0	0.0	0.8	0.4	4.4
	Ocp	1.0	1.5	1.6	3.8	10.7	1.4	0.0	3.0	10.3	19.6
1900-2000	Pro	7.6	30.0	36.6	0.5	14.7	5.7	0.0	0.0	0.4	4.5
	Ocp	1.1	1.6	2.0	2.0	9.9	1.7	0.0	0.0	8.0	14.5
2000-2100	Pro	4.3	14.1	52.1	0.0	20.8	3.1	0.0	0.0	0.5	5.2
	Ocp	1.0	1.4	1.5	0.0	5.6	1.8	0.0	0.0	4.0	11.6
2100-2200	Pro	3.2	28.6	45.2	0.6	11.4	4.5	0.0	0.0	0.5	6.0
	Ocp	1.0	1.8	1.5	3.0	6.4	2.1	0.0	0.0	3.3	9.5
2200-2300	Pro	1.6	21.0	50.0	0.0	16.7	4.3	0.5	0.0	0.7	5.2
	Ocp	1.0	1.8	1.6	0.0	5.3	2.5	1.0	0.0	3.0	7.9
16 hours	Pro	3.4	17.7	44.6	2.4	14.6	9.7	0.9	1.8	0.4	4.6
	Ocp	1.1	1.6	1.6	3.6	9.0	1.7	1.8	11.2	7.7	13.0

Legend

Pro. Proportion of vehicles in % (Sum may not add up to 100% due to figure rounding)
Ocp. Average occupancy of vehicles
M&H Medium and Heavy