

YEAR

2008

LINK

KAM SHEUNG RD (from KAM TIN RD to KAM TIN RD)

COVERAGE (B) STATION

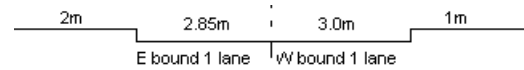
6208

ROAD NETWORK

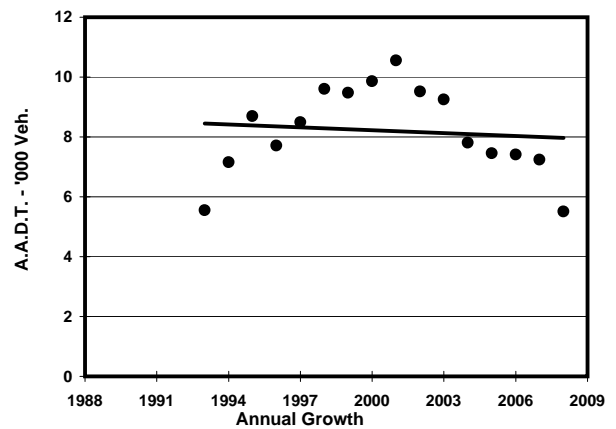
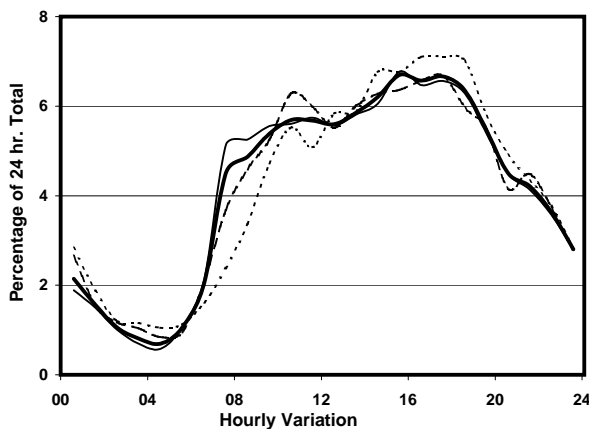
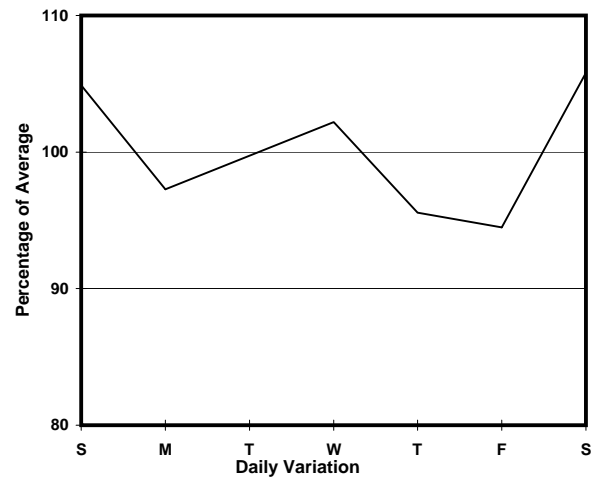
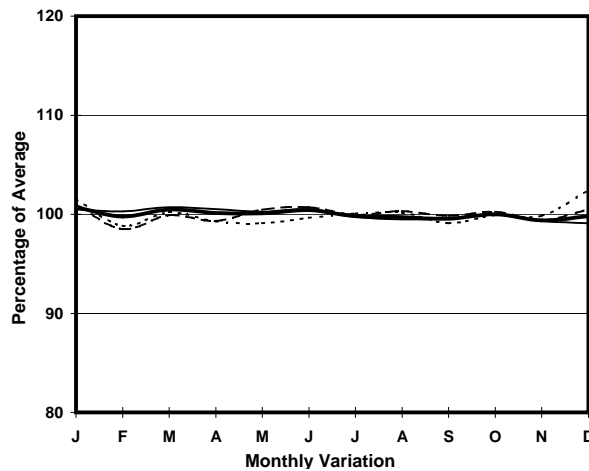
MAJOR

ROAD TYPE

RURAL ROAD



1. TRAFFIC FLOW VARIATION AND GROWTH



2. TRAFFIC CHARACTERISTICS (BY DIRECTION)

| Parameter | All - Day | Mon. - Fri. | Sat. | Sun. |
|--------------------------------------|-----------|-------------|-----------|-----------|
| EAST BOUND | | | | |
| A.A.D.T. | 3040 | 2970 | 3240 | 3150 |
| R 12 / 24 - % | 68.1 | 69 | 67.2 | 65.4 |
| R 16 / 24 - % | 87.2 | 87.9 | 86.6 | 85.2 |
| AM Peak Hour | 0900-1000 | 0900-1000 | 0900-1000 | 0900-1000 |
| One-way flow at AM peak hour | 160 | 170 | 160 | 120 |
| T - % (AM) | - | 18.7 | - | - |
| PM Peak Hour | 1600-1700 | 1600-1700 | 1600-1700 | 1600-1700 |
| One-way flow at PM peak hour | 200 | 190 | 220 | 240 |
| T - % (PM) | - | 12.9 | - | - |
| Prop.of commercial vehicles - 16 hr. | - | 9.6 | - | - |
| WEST BOUND | | | | |
| A.A.D.T. | 2470 | 2410 | 2570 | 2610 |
| R 12 / 24 - % | 72.4 | 73 | 71.6 | 70.1 |
| R 16 / 24 - % | 88.6 | 88.9 | 87.5 | 87.6 |
| AM Peak Hour | 0900-1000 | 0700-0800 | 0900-1000 | 0900-1000 |
| One-way flow at AM peak hour | 140 | 140 | 140 | 150 |
| T - % (AM) | - | 18 | - | - |
| PM Peak Hour | 1700-1800 | 1700-1800 | 1700-1800 | 1700-1800 |
| One-way flow at PM peak hour | 170 | 170 | 180 | 200 |
| T - % (PM) | - | 22.1 | - | - |
| Prop.of commercial vehicles - 16 hr. | - | 12.6 | - | - |

3. OTHER INFORMATION AND COMMENT

4. Vehicle classification and occupancy - Monday to Friday

| Time | | Class of vehicle | | | | | | | | | |
|------------------------|-----|------------------|----------------|------|---------------|------|------------|-------|----------------|---------|------|
| | | Motor Cycle | Private Car | Taxi | Private LB | PLB | Goods veh. | | Non Fr. Bus | Fr. Bus | |
| | | | | | | | Light | M & H | | SD | DD |
| 0700-0800 | Pro | 1.4 | 27.1 | 8.6 | 5.7 | 21.4 | 18.6 | 7.1 | 5.7 | 0.0 | 4.3 |
| | Ocp | 1.0 | 1.4 | 2.7 | 8.5 | 9.6 | 1.5 | 1.4 | 30.5 | 0.0 | 48.3 |
| 0800-0900 | Pro | 0.0 | 38.5 | 10.2 | 0.0 | 11.3 | 24.9 | 9.1 | 2.3 | 0.0 | 3.7 |
| | Ocp | 0.0 | 1.4 | 2.1 | 0.0 | 11.8 | 1.7 | 1.4 | 29.0 | 0.0 | 30.1 |
| 0900-1000 | Pro | 1.4 | 27.6 | 11.0 | 0.0 | 15.2 | 27.6 | 9.7 | 1.4 | 0.0 | 6.2 |
| | Ocp | 1.0 | 1.8 | 1.8 | 0.0 | 9.7 | 1.7 | 1.1 | 1.0 | 0.0 | 21.7 |
| 1000-1100 | Pro | 0.0 | 35.5 | 5.5 | 0.0 | 12.3 | 32.8 | 9.6 | 0.0 | 0.0 | 4.4 |
| | Ocp | 0.0 | 1.4 | 1.5 | 0.0 | 8.1 | 1.5 | 1.1 | 0.0 | 0.0 | 18.2 |
| 1100-1200 | Pro | 1.2 | 34.6 | 7.2 | 0.0 | 13.1 | 37.0 | 3.6 | 0.0 | 0.0 | 3.3 |
| | Ocp | 1.0 | 1.4 | 2.2 | 0.0 | 8.9 | 1.5 | 1.3 | 0.0 | 0.0 | 21.7 |
| 1200-1300 | Pro | 3.1 | 48.6 | 12.6 | 1.6 | 11.0 | 9.4 | 6.3 | 3.1 | 0.0 | 4.3 |
| | Ocp | 1.5 | 1.2 | 1.5 | 1.0 | 11.3 | 1.2 | 1.3 | 22.0 | 0.0 | 28.4 |
| 1300-1400 | Pro | 0.9 | 42.2 | 5.6 | 3.7 | 9.4 | 24.4 | 7.5 | 2.8 | 0.0 | 3.5 |
| | Ocp | 1.0 | 1.5 | 2.2 | 8.8 | 9.1 | 1.6 | 1.1 | 10.0 | 0.0 | 21.9 |
| 1400-1500 | Pro | 2.9 | 27.4 | 4.3 | 0.0 | 17.3 | 33.2 | 10.1 | 0.0 | 0.0 | 4.7 |
| | Ocp | 1.0 | 1.6 | 1.0 | 0.0 | 8.9 | 1.4 | 1.3 | 0.0 | 0.0 | 15.8 |
| 1500-1600 Peak hour | Pro | 0.0 | 48.5 | 3.7 | 1.8 | 11.0 | 26.5 | 4.6 | 0.9 | 0.0 | 3.0 |
| | Ocp | 0.0 | 1.4 | 1.3 | 1.0 | 8.3 | 1.6 | 1.0 | 30.0 | 0.0 | 14.6 |
| 1600-1700 | Pro | 0.0 | 39.8 | 9.9 | 2.5 | 11.2 | 26.1 | 3.7 | 2.5 | 0.0 | 4.3 |
| | Ocp | 0.0 | 1.3 | 2.0 | 6.5 | 10.4 | 1.5 | 1.0 | 12.5 | 0.0 | 24.3 |
| 1700-1800 | Pro | 1.0 | 40.4 | 5.2 | 3.1 | 10.4 | 26.9 | 6.2 | 2.1 | 0.3 | 4.4 |
| | Ocp | 1.0 | 1.6 | 2.6 | 2.7 | 11.1 | 1.7 | 1.2 | 31.5 | 24.0 | 29.8 |
| 1800-1900 | Pro | 3.5 | 52.8 | 7.0 | 5.9 | 8.2 | 16.4 | 2.3 | 0.0 | 0.0 | 3.8 |
| | Ocp | 1.3 | 1.6 | 1.7 | 4.0 | 14.3 | 1.3 | 1.0 | 0.0 | 0.0 | 40.9 |
| 1900-2000 | Pro | 1.3 | 58.7 | 4.0 | 1.3 | 12.0 | 16.0 | 0.0 | 1.3 | 0.7 | 4.7 |
| | Ocp | 1.0 | 1.6 | 1.7 | 1.0 | 9.4 | 1.3 | 0.0 | 22.0 | 16.0 | 25.2 |
| 2000-2100 | Pro | 1.5 | 59.9 | 7.5 | 0.0 | 10.5 | 16.5 | 0.0 | 0.0 | 0.0 | 4.1 |
| | Ocp | 1.0 | 1.6 | 1.8 | 0.0 | 6.3 | 1.5 | 0.0 | 0.0 | 0.0 | 20.1 |
| 2100-2200 | Pro | 1.6 | 67.7 | 6.3 | 0.0 | 9.4 | 9.4 | 0.0 | 0.0 | 0.0 | 5.5 |
| | Ocp | 2.0 | 1.6 | 2.8 | 0.0 | 5.0 | 2.2 | 0.0 | 0.0 | 0.0 | 18.9 |
| 2200-2300 | Pro | 0.0 | 72.4 | 7.6 | 0.0 | 5.7 | 7.6 | 0.0 | 0.0 | 0.0 | 6.7 |
| | Ocp | 0.0 | 1.5 | 2.5 | 0.0 | 5.0 | 1.5 | 0.0 | 0.0 | 0.0 | 19.1 |
| 16 hours | Pro | 1.2 | 44.3 | 7.1 | 1.8 | 11.8 | 22.9 | 5.2 | 1.4 | 0.1 | 4.3 |
| | Ocp | 1.2 | 1.5 | 2.0 | 5.2 | 9.4 | 1.5 | 1.2 | 21.9 | 18.7 | 24.8 |

Legend

Pro. Proportion of vehicles in % (Sum may not add up to 100% due to figure rounding)
Ocp. Average occupancy of vehicles
M&H Medium and Heavy