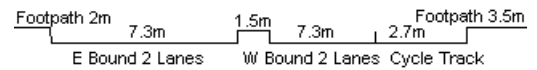
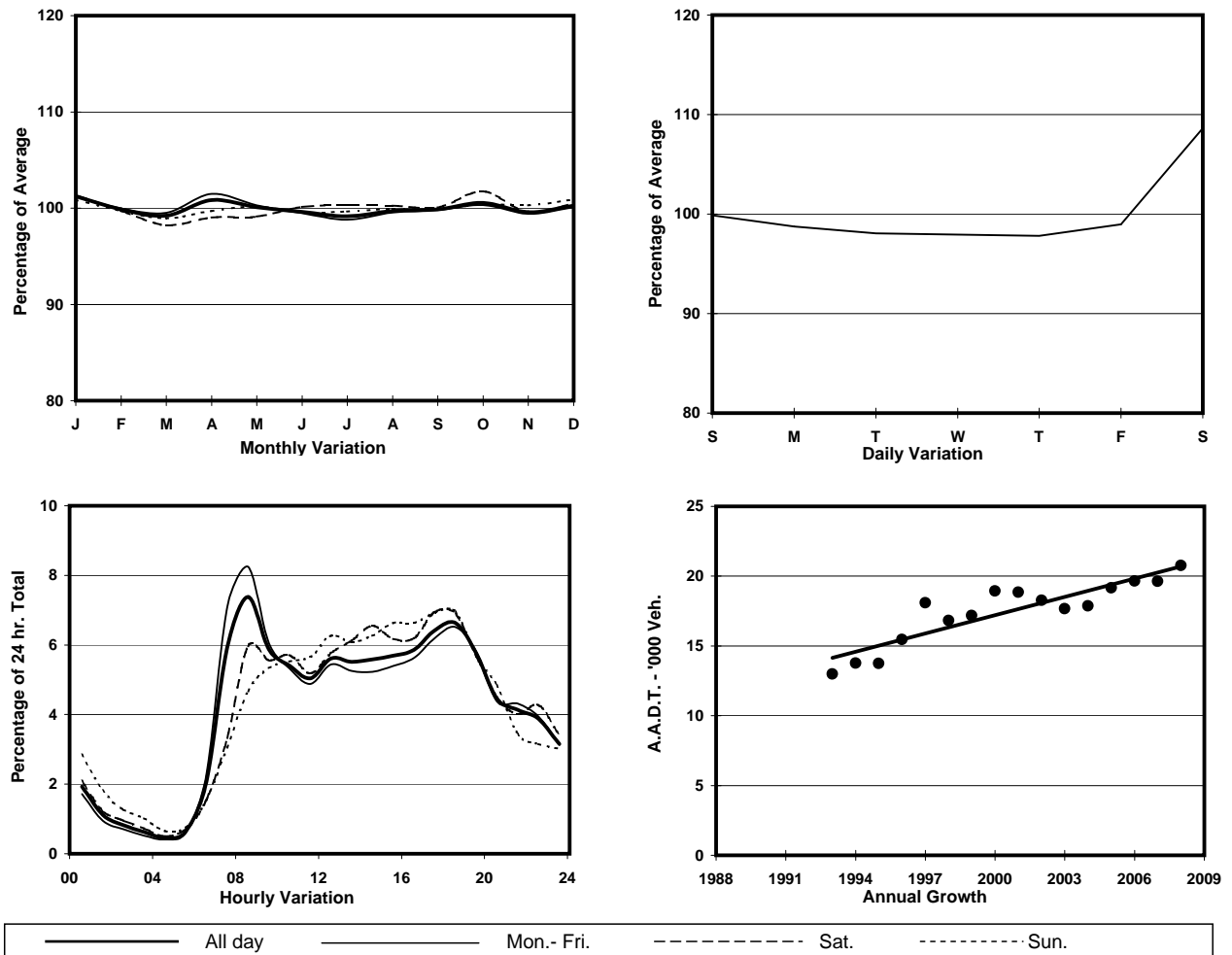


COVERAGE (B) STATION 6211
ROAD NETWORK MAJOR
ROAD TYPE RURAL ROAD



1. TRAFFIC FLOW VARIATION AND GROWTH



2. TRAFFIC CHARACTERISTICS (BY DIRECTION)

Parameter	All - Day	Mon. - Fri.	Sat.	Sun.
EAST BOUND				
A.A.D.T.	10610	10390	11670	10620
R 12 / 24 - %	66.4	66	67.1	67.7
R 16 / 24 - %	88.7	89.2	88.3	86.5
AM Peak Hour	0800-0900	0800-0900	0900-1000	0900-1000
One-way flow at AM peak hour	680	750	600	510
T - % (AM)	-	10.2	-	-
PM Peak Hour	1800-1900	1800-1900	1700-1800	1600-1700
One-way flow at PM peak hour	750	760	810	740
T - % (PM)	-	8.8	-	-
Prop.of commercial vehicles - 16 hr.	-	9.6	-	-
WEST BOUND				
A.A.D.T.	10160	10020	10880	10120
R 12 / 24 - %	75.7	76.7	74	72.4
R 16 / 24 - %	89.7	90.2	89.4	87.7
AM Peak Hour	0700-0800	0700-0800	0800-0900	0900-1000
One-way flow at AM peak hour	880	1080	780	600
T - % (AM)	-	8.5	-	-
PM Peak Hour	1700-1800	1700-1800	1700-1800	1800-1900
One-way flow at PM peak hour	660	630	760	800
T - % (PM)	-	10.1	-	-
Prop.of commercial vehicles - 16 hr.	-	8.4	-	-

3. OTHER INFORMATION AND COMMENT

4. Vehicle classification and occupancy - Monday to Friday

Time		Class of vehicle									
		Motor Cycle	Private Car	Taxi	Private LB	PLB	Goods veh.		Non Fr. Bus	Fr. Bus	
							Light	M & H		SD	DD
0700-0800	Pro	2.2	44.4	17.7	3.0	8.5	13.3	3.7	4.8	0.3	2.1
	Ocp	1.0	1.7	1.8	7.3	7.2	1.7	1.2	16.6	25.3	38.4
0800-0900 Peak hour	Pro	1.3	59.4	15.8	1.1	4.2	8.6	1.3	7.0	0.2	1.0
	Ocp	1.3	1.5	1.7	4.6	11.3	1.9	1.8	13.9	31.8	30.5
0900-1000	Pro	0.8	44.3	24.4	0.8	5.5	14.7	3.9	3.6	0.3	1.7
	Ocp	1.0	1.5	2.0	4.0	8.3	1.9	1.2	8.8	15.8	31.9
1000-1100	Pro	2.1	50.7	18.3	0.4	6.0	14.5	3.0	3.0	0.3	1.6
	Ocp	1.0	1.4	1.8	4.0	9.6	1.6	1.6	9.1	8.7	32.0
1100-1200	Pro	3.5	41.5	7.9	4.9	6.9	23.7	5.4	4.0	0.0	2.1
	Ocp	1.1	1.4	2.1	3.7	9.4	1.8	1.7	8.5	0.0	22.1
1200-1300	Pro	2.2	45.8	23.8	1.1	6.7	11.5	3.0	4.1	0.0	1.7
	Ocp	1.0	1.6	2.0	3.7	12.6	1.6	1.6	11.9	0.0	37.2
1300-1400	Pro	3.9	50.1	13.4	2.2	6.5	15.5	1.7	4.7	0.0	2.1
	Ocp	1.1	1.8	1.6	2.8	8.6	1.8	1.5	4.4	0.0	20.5
1400-1500	Pro	1.6	48.5	12.2	1.6	6.7	20.1	3.5	3.9	0.0	1.9
	Ocp	1.0	1.7	1.7	3.0	6.8	1.6	1.1	6.6	0.0	14.8
1500-1600	Pro	0.8	39.4	16.0	2.9	7.8	22.2	3.3	5.7	0.1	1.8
	Ocp	1.0	1.4	1.7	3.4	7.8	1.6	1.4	9.3	1.0	12.6
1600-1700	Pro	0.4	41.4	12.8	3.8	8.1	20.5	3.4	6.8	0.4	2.2
	Ocp	1.0	1.6	1.9	1.9	9.0	1.7	1.3	10.3	12.0	29.8
1700-1800	Pro	2.4	48.3	8.0	2.4	7.3	19.1	3.1	7.3	0.3	1.7
	Ocp	1.0	1.6	2.0	2.7	9.5	1.8	1.3	7.6	16.3	26.5
1800-1900	Pro	2.2	57.0	13.9	1.6	7.0	10.8	1.0	5.1	0.2	1.3
	Ocp	1.0	1.6	1.7	2.0	11.5	1.6	1.0	17.4	19.0	40.8
1900-2000	Pro	3.0	65.3	11.0	0.0	7.3	7.7	0.7	3.3	0.3	1.4
	Ocp	1.2	1.7	1.8	0.0	10.2	1.9	1.5	5.7	5.8	24.9
2000-2100	Pro	3.9	62.6	11.2	0.4	9.1	6.5	0.9	3.9	0.0	1.6
	Ocp	1.1	1.5	1.7	3.0	8.7	1.6	1.0	6.1	0.0	13.3
2100-2200	Pro	1.5	61.7	12.2	0.5	9.3	8.8	0.0	3.9	0.0	2.1
	Ocp	1.0	1.6	2.5	3.0	6.9	1.7	0.0	9.1	0.0	7.5
2200-2300	Pro	2.5	60.2	17.5	0.0	8.5	6.0	0.0	3.0	0.0	2.3
	Ocp	1.4	1.8	1.6	0.0	7.0	1.3	0.0	3.3	0.0	13.1
16 hours	Pro	2.1	51.6	15.1	1.6	7.0	13.7	2.4	4.8	0.2	1.7
	Ocp	1.1	1.6	1.8	3.6	9.0	1.7	1.4	10.2	16.2	25.2

Legend

Pro. Proportion of vehicles in % (Sum may not add up to 100% due to figure rounding)
Ocp. Average occupancy of vehicles
M&H Medium and Heavy