

YEAR

2008

LINK CONTAINER PORT RD S (from N/O PMH INT to S/O PMH INT)

COVERAGE (B) STATION

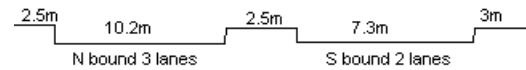
6214

ROAD NETWORK

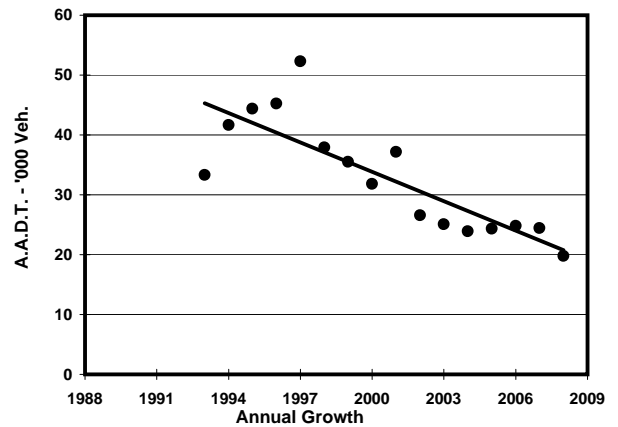
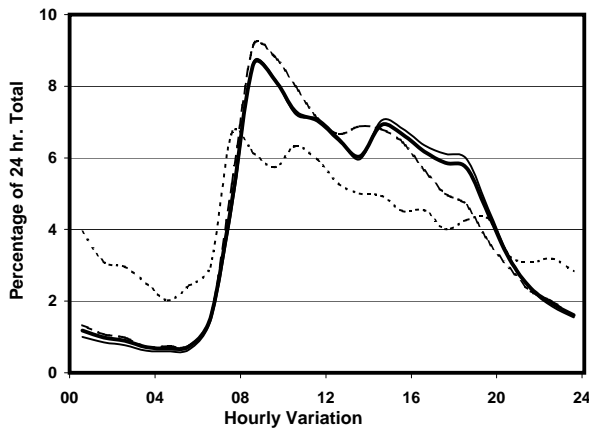
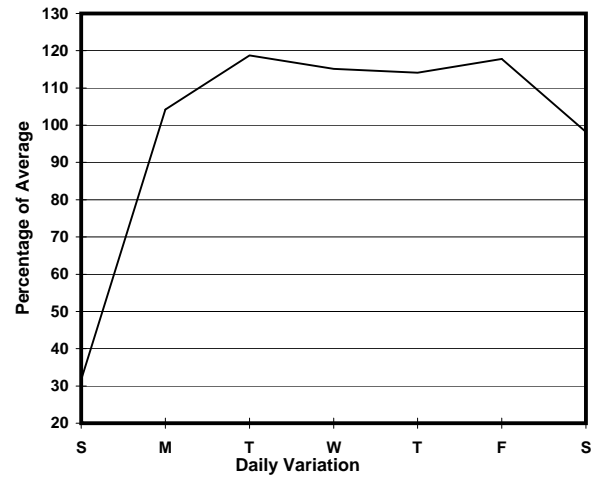
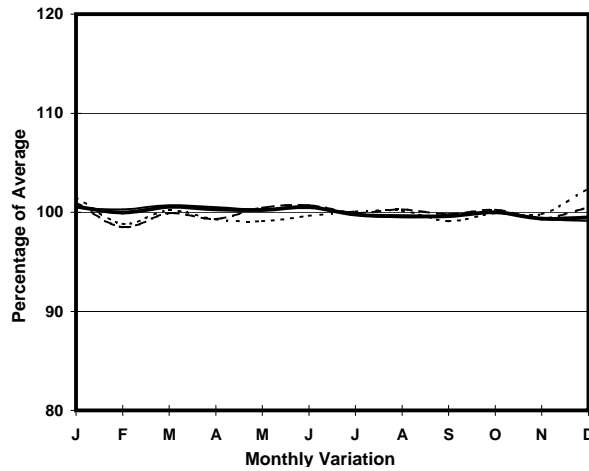
MAJOR

ROAD TYPE

LOCAL DISTRIBUTOR



1. TRAFFIC FLOW VARIATION AND GROWTH



2. TRAFFIC CHARACTERISTICS (BY DIRECTION)

Parameter	All - Day	Mon. - Fri.	Sat.	Sun.
SOUTH BOUND				
A.A.D.T.	9150	10930	9030	2780
R 12 / 24 - %	80.1	80.8	81.3	63.2
R 16 / 24 - %	92.2	93	91.6	77.8
AM Peak Hour	0900-1000	0900-1000	0800-0900	0700-0800
One-way flow at AM peak hour	700	840	770	200
T - % (AM)	-	65.8	-	-
PM Peak Hour	1600-1700	1600-1700	1600-1700	1800-1900
One-way flow at PM peak hour	610	750	540	140
T - % (PM)	-	62.6	-	-
Prop.of commercial vehicles - 16 hr.	-	53.7	-	-
NORTH BOUND				
A.A.D.T.	10650	12500	11150	3720
R 12 / 24 - %	79.5	80.3	79.7	63.6
R 16 / 24 - %	91.3	92.1	91.1	76.8
AM Peak Hour	0800-0900	0800-0900	0800-0900	0800-0900
One-way flow at AM peak hour	1020	1210	1080	240
T - % (AM)	-	41.3	-	-
PM Peak Hour	1600-1700	1600-1700	1600-1700	1600-1700
One-way flow at PM peak hour	620	740	600	180
T - % (PM)	-	59.8	-	-
Prop.of commercial vehicles - 16 hr.	-	56.8	-	-

3. OTHER INFORMATION AND COMMENT

4. Vehicle classification and occupancy - Monday to Friday

Time		Class of vehicle									
		Motor Cycle	Private Car	Taxi	Private LB	PLB	Goods veh.		Non Fr. Bus	Fr. Bus	
							Light	M & H		SD	DD
0700-0800	Pro	2.3	2.5	14.1	0.3	2.3	16.3	58.6	3.7	0.0	0.0
	Ocp	1.0	1.1	2.0	3.0	10.5	1.7	1.1	16.8	0.0	0.0
0800-0900 Peak hour	Pro	1.4	10.5	25.1	0.2	0.6	19.3	40.7	2.3	0.0	0.0
	Ocp	1.0	1.4	1.8	1.0	9.0	1.7	1.2	20.6	0.0	0.0
0900-1000	Pro	0.5	8.6	9.8	0.0	0.5	20.5	59.3	0.9	0.0	0.0
	Ocp	1.0	1.4	1.7	0.0	14.5	1.5	1.2	12.0	0.0	0.0
1000-1100	Pro	1.9	5.7	3.3	0.5	0.7	25.5	61.2	1.2	0.0	0.0
	Ocp	1.0	1.5	1.8	1.0	5.3	1.4	1.2	2.0	0.0	0.0
1100-1200	Pro	2.2	4.9	4.7	0.5	1.0	29.9	56.4	0.5	0.0	0.0
	Ocp	1.0	1.3	1.9	4.0	5.3	1.5	1.2	14.0	0.0	0.0
1200-1300	Pro	1.5	14.2	4.8	0.0	1.0	23.9	54.6	0.0	0.0	0.0
	Ocp	1.0	1.6	2.0	0.0	5.3	1.4	1.2	0.0	0.0	0.0
1300-1400	Pro	0.6	6.9	5.2	0.3	1.2	26.9	59.0	0.0	0.0	0.0
	Ocp	1.0	1.5	1.3	5.0	4.3	1.3	1.2	0.0	0.0	0.0
1400-1500	Pro	1.5	10.1	4.9	0.7	0.7	27.4	54.1	0.5	0.0	0.0
	Ocp	1.0	1.5	1.6	5.0	7.3	1.6	1.2	1.0	0.0	0.0
1500-1600	Pro	1.3	6.1	4.0	0.0	1.0	34.6	52.8	0.3	0.0	0.0
	Ocp	1.0	1.5	1.8	0.0	7.3	1.3	1.2	23.0	0.0	0.0
1600-1700	Pro	2.3	9.9	3.8	0.3	1.2	21.2	60.6	0.9	0.0	0.0
	Ocp	1.0	1.6	2.0	7.0	3.5	1.4	1.2	2.3	0.0	0.0
1700-1800	Pro	0.9	11.9	6.1	0.6	0.6	21.6	54.7	3.6	0.0	0.0
	Ocp	1.0	1.3	1.6	7.0	8.5	1.4	1.2	28.6	0.0	0.0
1800-1900	Pro	1.7	12.4	13.0	0.0	1.2	13.8	55.0	2.9	0.0	0.0
	Ocp	1.0	1.3	1.8	0.0	13.8	1.3	1.1	26.0	0.0	0.0
1900-2000	Pro	2.7	18.9	23.5	0.0	1.3	8.6	44.0	1.0	0.0	0.0
	Ocp	1.0	1.4	1.8	0.0	13.0	1.2	1.2	8.7	0.0	0.0
2000-2100	Pro	1.1	16.0	22.1	1.7	1.7	11.6	45.9	0.0	0.0	0.0
	Ocp	1.0	1.3	1.5	3.0	2.3	1.2	1.1	0.0	0.0	0.0
2100-2200	Pro	2.3	10.8	30.0	0.0	1.5	6.2	48.5	0.8	0.0	0.0
	Ocp	1.0	1.5	1.5	0.0	10.5	1.1	1.2	1.0	0.0	0.0
2200-2300	Pro	6.2	8.9	23.9	0.9	0.0	8.9	49.6	1.8	0.0	0.0
	Ocp	1.0	1.5	1.4	2.0	0.0	1.5	1.1	10.5	0.0	0.0
16 hours	Pro	1.7	9.5	10.7	0.3	1.0	21.6	54.0	1.3	0.0	0.0
	Ocp	1.0	1.4	1.7	3.9	8.0	1.4	1.2	17.6	0.0	0.0

Legend

Pro. Proportion of vehicles in % (Sum may not add up to 100% due to figure rounding)
Ocp. Average occupancy of vehicles
M&H Medium and Heavy