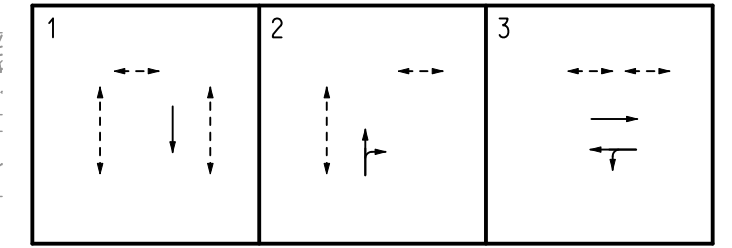
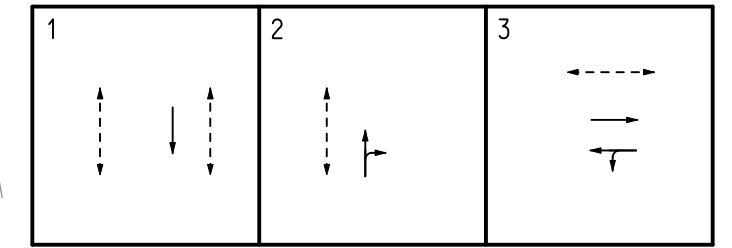


EXISTING METHOD OF CONTROL




PROPOSED METHOD OF CONTROL

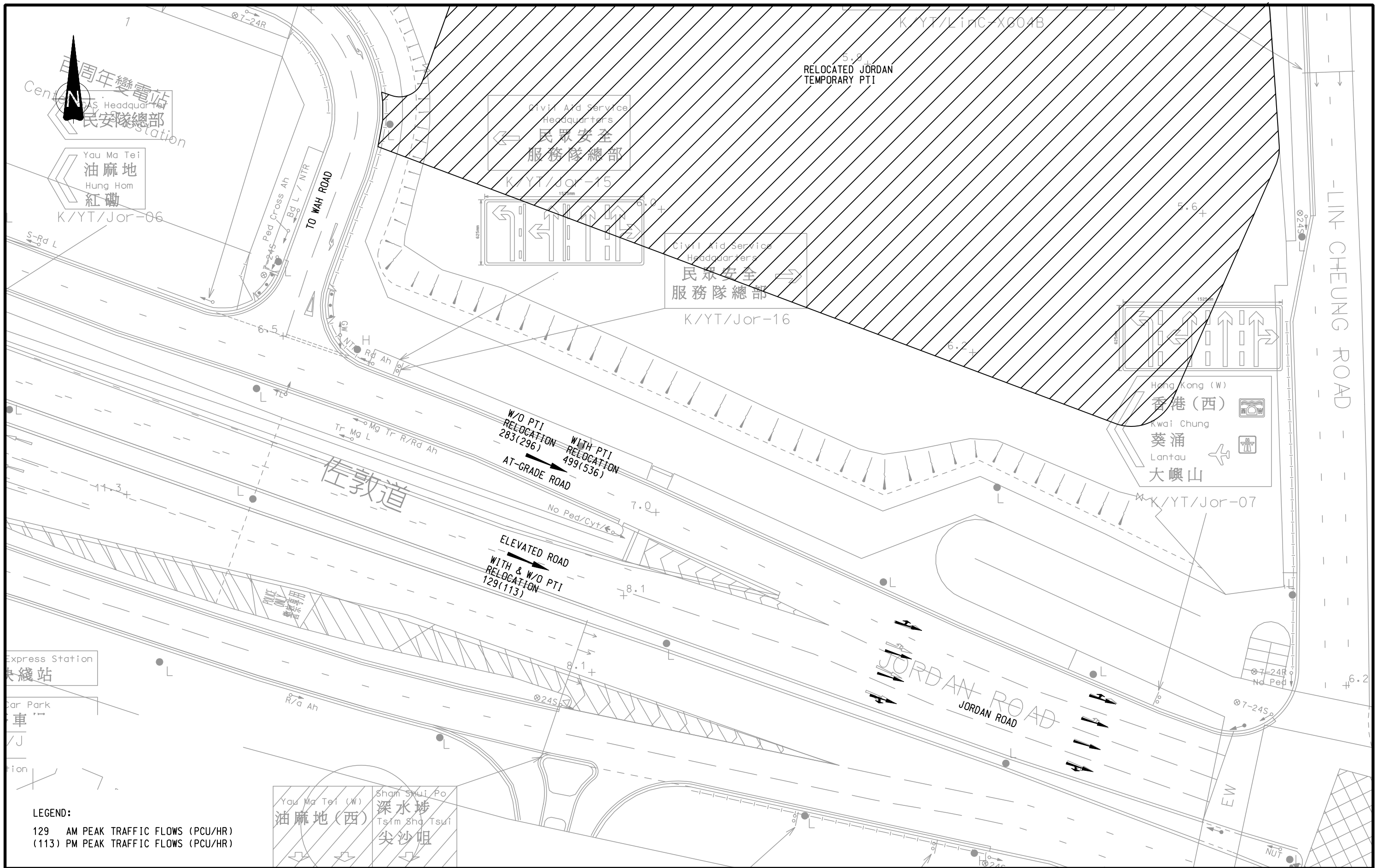


Rev.	Description	Approved	Date

AGREEMENT NO. TD 54/2008 WEST KOWLOON RECLAMATION DEVELOPMENT TRAFFIC STUDY

**PROPOSED SHORT-TERM IMPROVEMENT SCHEME FOR THE JUNCTION OF
NATHAN ROAD / WATERLOO ROAD**

Figure No. 9.1		Rev. -
Designed By: HEI	Scale: 1:500	 MVA HONG KONG LTD.
Checked By: SPC	Date: AUG. 2009	
Ref.: 27814/FR/F91.DGN/LY/26AUG09		



Rev.	Description	Approved	Date

AGREEMENT NO. TD 54/2008 WEST KOWLOON RECLAMATION DEVELOPMENT TRAFFIC STUDY

ORIGINAL LANE MARKING AND TRAFFIC FLOWS AT JORDAN ROAD EB

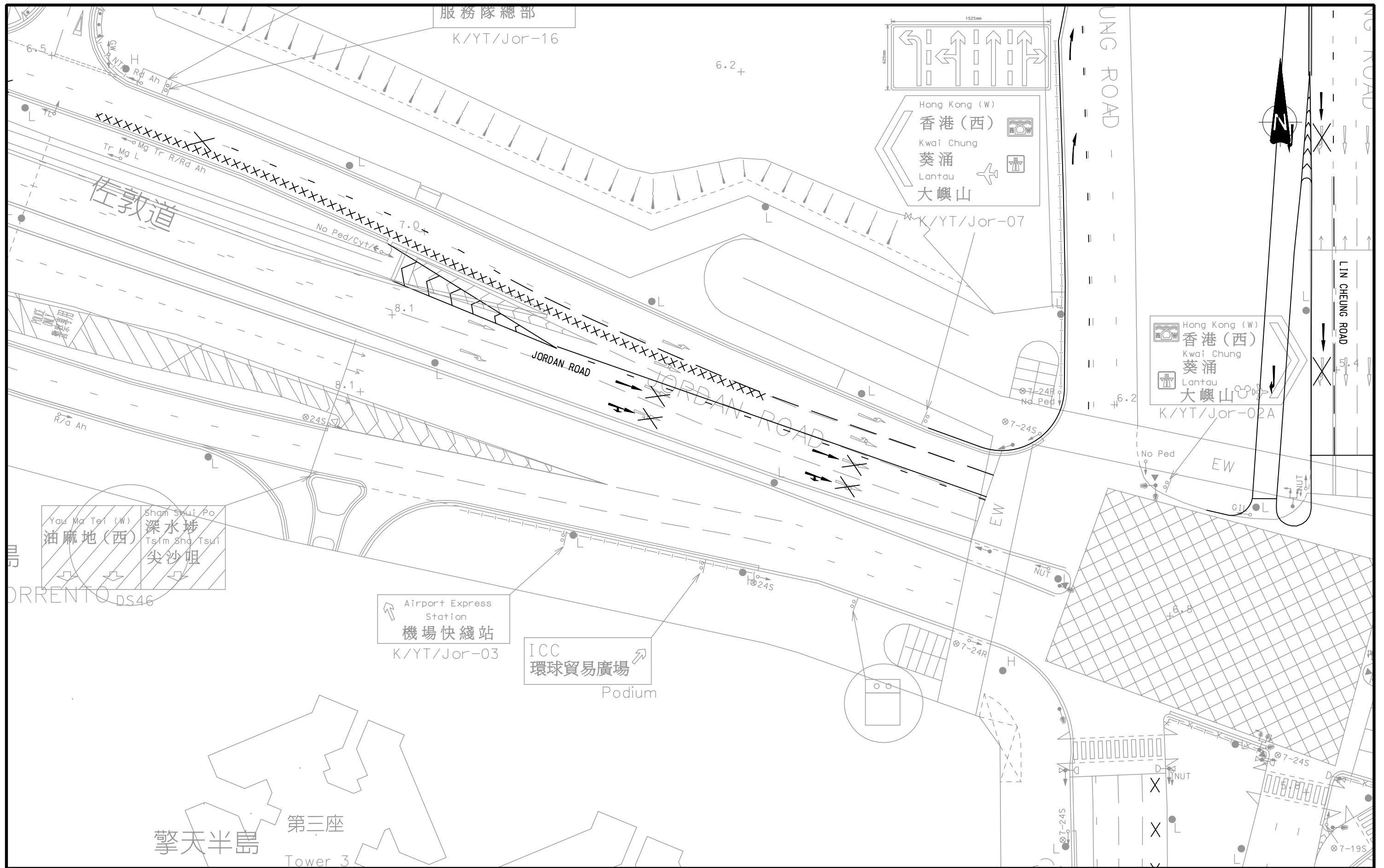
Figure No. **9.2** Rev. -

Designed By: HEI Scale: 1:500

Checked By: SPC Date: AUG. 2009

Ref.: 27814/FR/F92.DGN/CPW/01AUG09





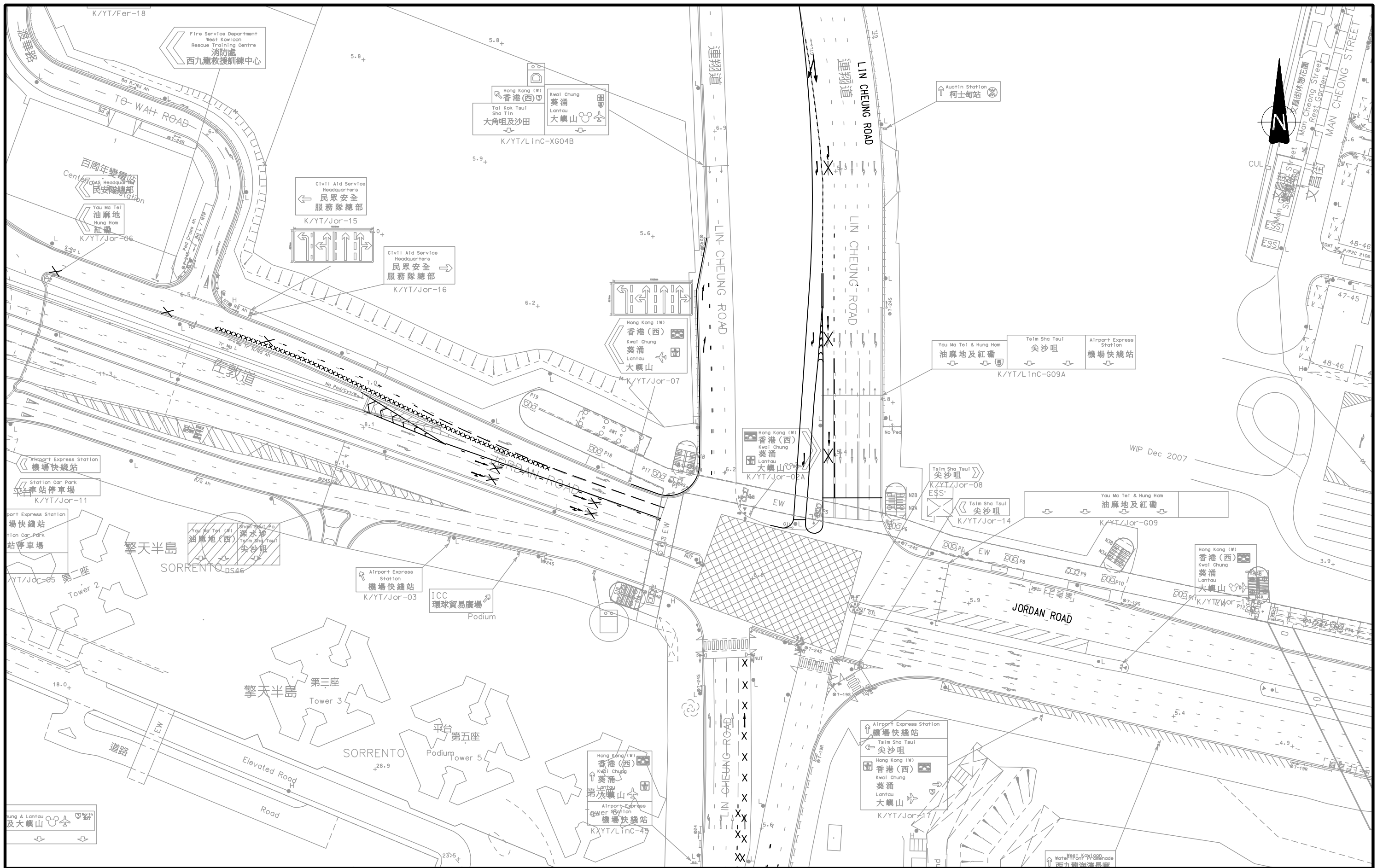
Rev.	Description	Approved	Date

AGREEMENT NO. TD 54/2008 WEST KOWLOON RECLAMATION DEVELOPMENT TRAFFIC STUDY

MODIFICATION OF TD'S IMPROVEMENT FOR JORDAN ROAD EB

Figure No.	9.3	Rev.	-
Designed By:	HEI	Scale:	1 : 500
Checked By:	SPC	Date:	AUG. 2009
Ref. : 27814/FR/F93.DGN/LIY/26AUG09			





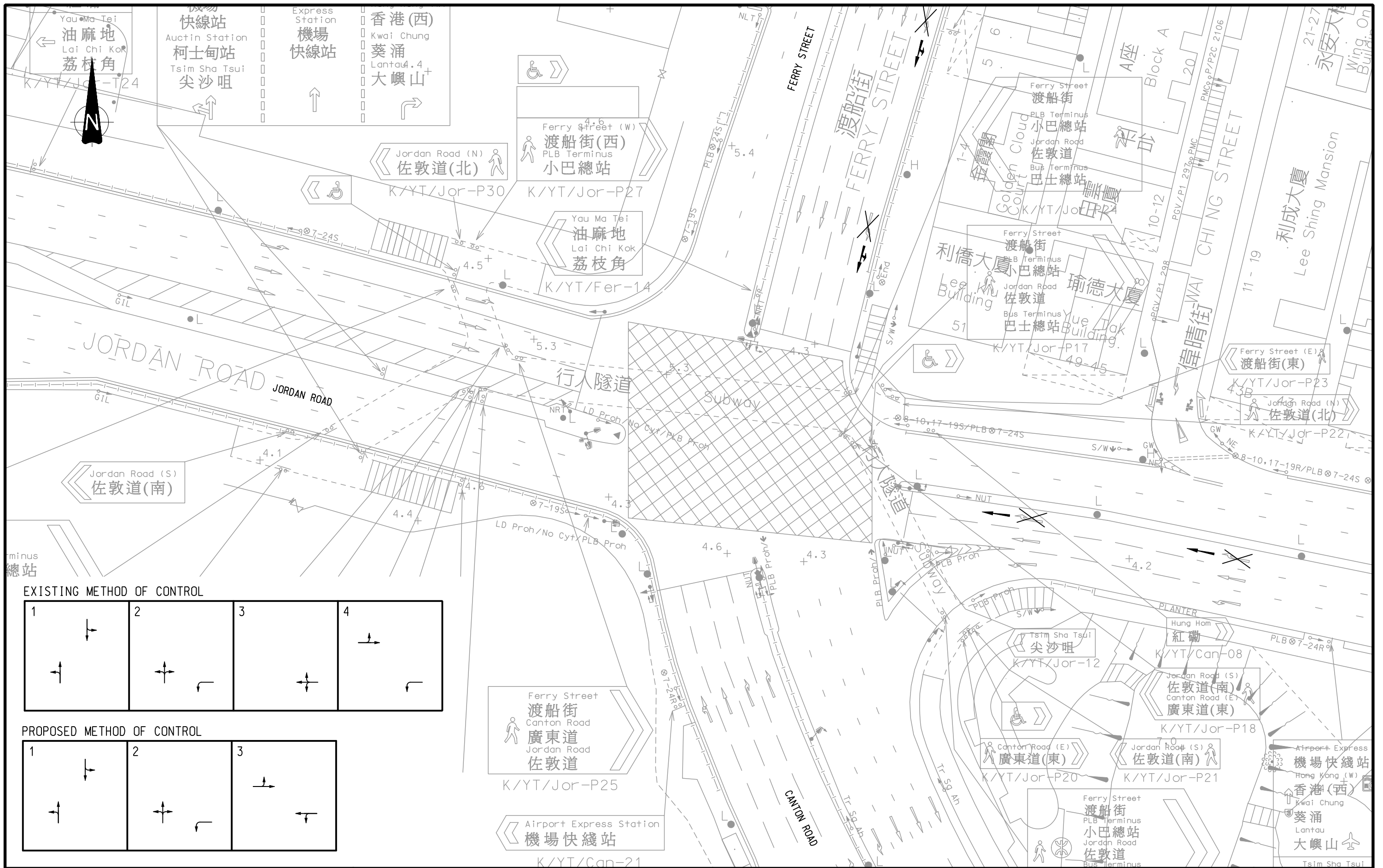
AGREEMENT NO. TD 54/2008 WEST KOWLOON RECLAMATION DEVELOPMENT TRAFFIC STUDY

PROPOSED SHORT-TERM IMPROVEMENT SCHEME FOR THE JUNCTION OF JORDAN ROAD / LIN CHEUNG ROAD

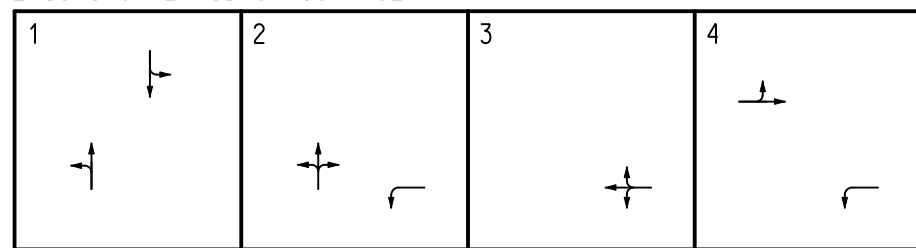
Rev.	Description	Approved	Date

Figure No.	9.4	Rev.	-
Designed By :	HEI	Scale :	1 : 1000
Checked By :	SPC	Date :	AUG. 2009
Ref. : 27814/FR/F94.DGN/LKC/27AUG09			

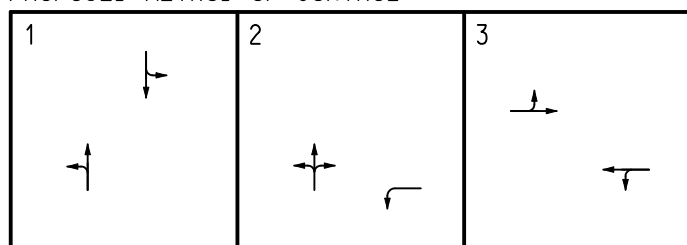




EXISTING METHOD OF CONTROL



PROPOSED METHOD OF CONTROL



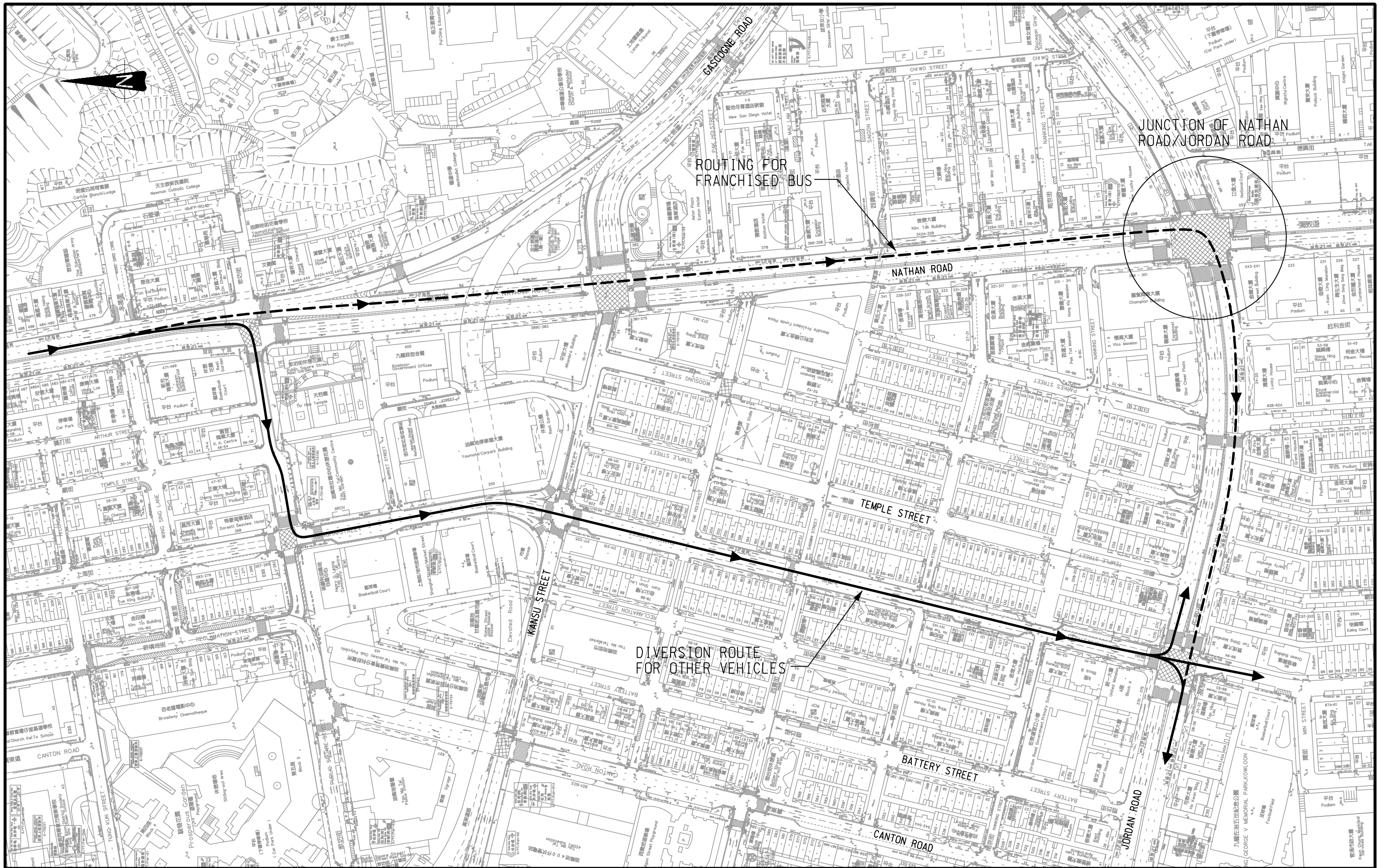
Rev.	Description	Approved	Date

AGREEMENT NO. TD 54/2008 WEST KOWLOON RECLAMATION DEVELOPMENT TRAFFIC STUDY

PROPOSED SHORT-TERM IMPROVEMENT SCHEME FOR THE JUNCTION OF JORDAN ROAD / FERRY STREET / CANTON ROAD

Figure No.	9.5	Rev.	-
Designed By:	HEI	Scale:	1 : 500
Checked By:	SPC	Date:	AUG. 2009
Ref. : 27814/FR/F95/DGN/LKC/27AUG09			





AGREEMENT NO. TD 54/2008 WEST KOWLOON RECLAMATION DEVELOPMENT TRAFFIC STUDY

DIVERSION ROUTE FOR THE BANNED NATHAN ROAD SB RIGHT-TURNING MOVEMENT

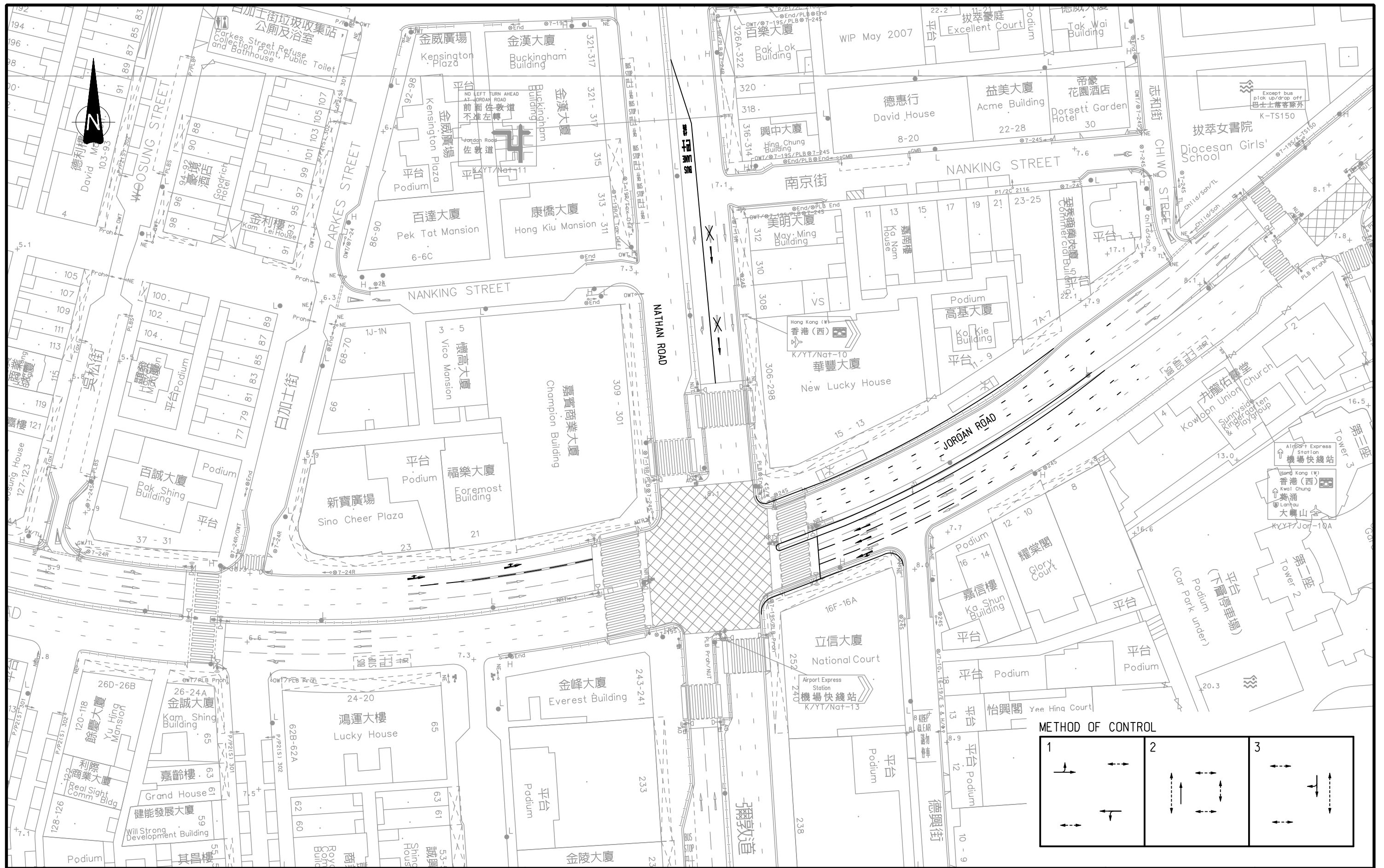
Figure No. **9.7** Rev. -

Designed By : HEI	Scale : 1 : 2000
Checked By : SPC	Date : AUG. 2009



Ref. : 27814/FR/F97/DGN/LKC/27AUG09

Rev.	Description	Approved	Date



Rev.	Description	Approved	Date

AGREEMENT NO. TD 54/2008 WEST KOWLOON RECLAMATION DEVELOPMENT TRAFFIC STUDY

**PROPOSED SHORT-TERM IMPROVEMENT SCHEME FOR THE JUNCTION OF
NATHAN ROAD / JORDAN ROAD**

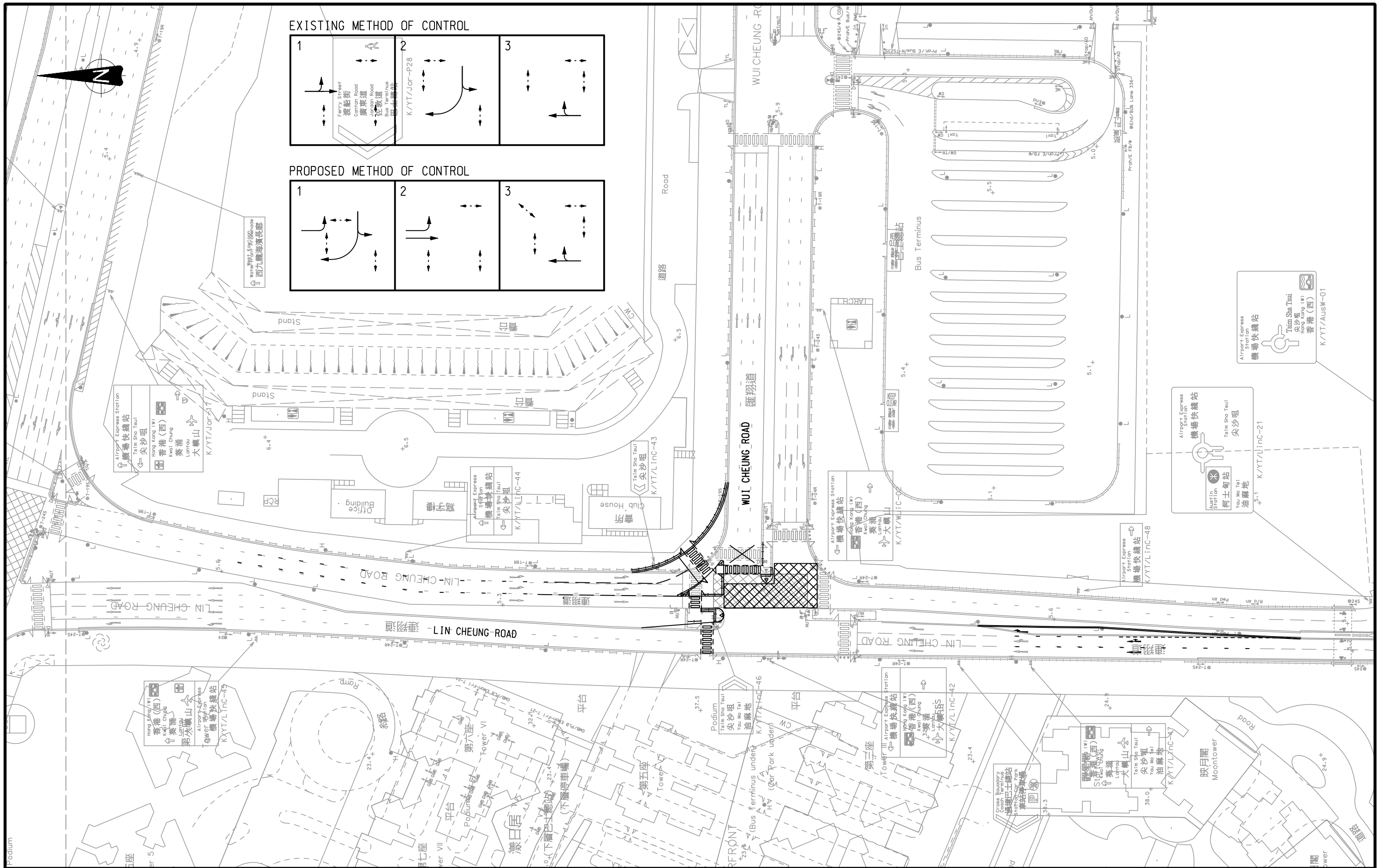
Figure No. **9.8** Rev. -

Designed By: HEI Scale: 1 : 800

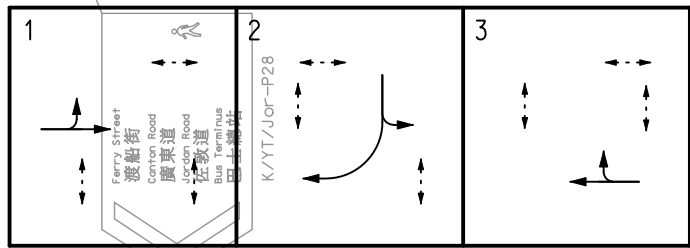
Checked By: SPC Date: AUG. 2009

Ref.: 27816/FR/F98/DGN/LKC/27AUG09

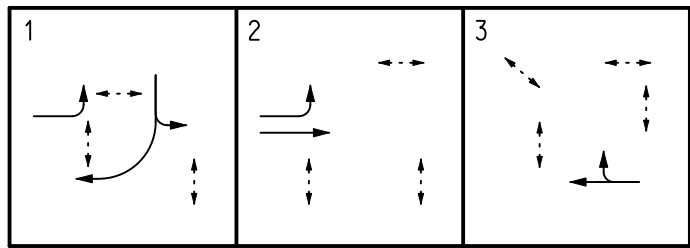




EXISTING METHOD OF CONTROL



PROPOSED METHOD OF CONTROL



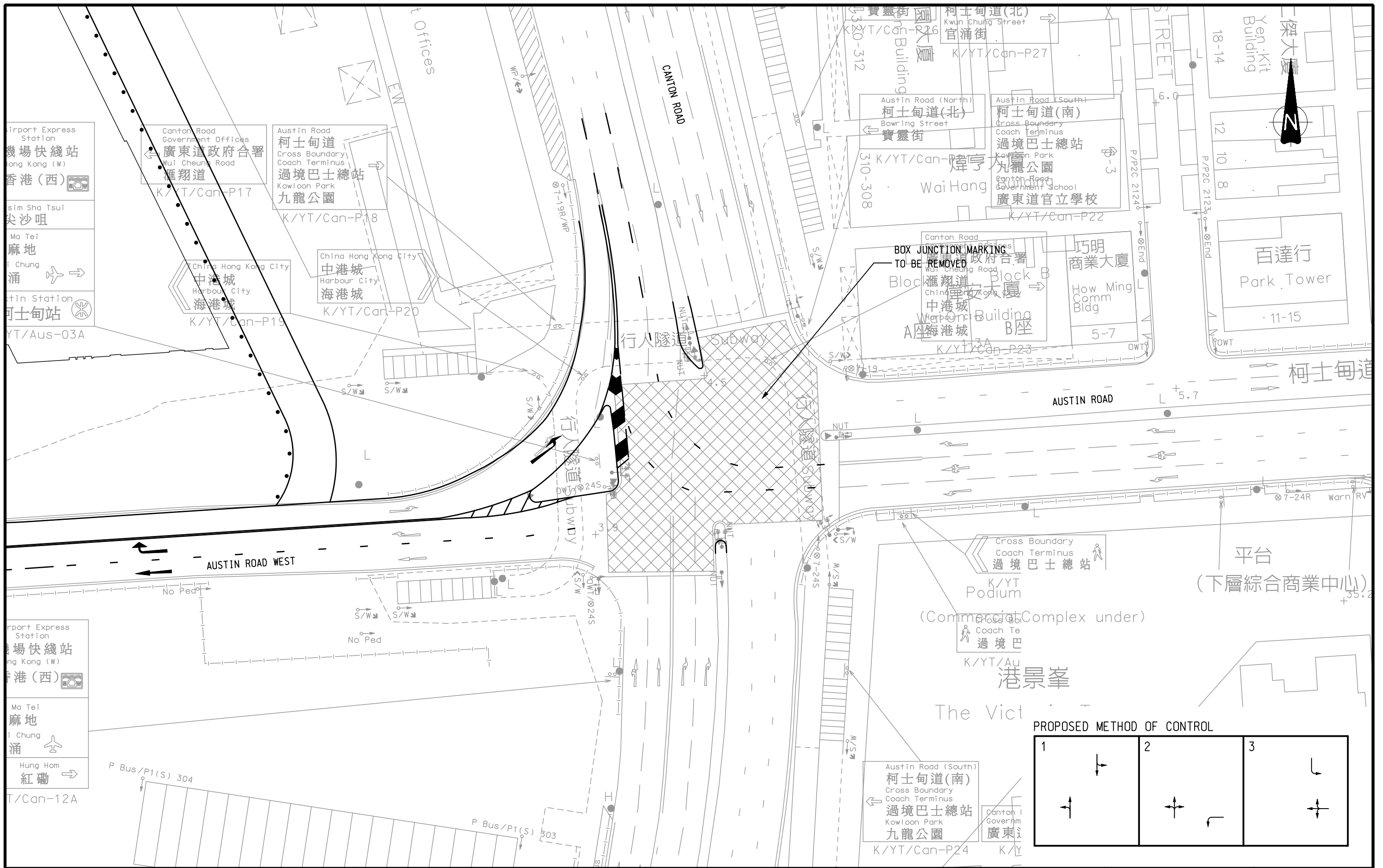
Rev.	Description	Approved	Date

AGREEMENT NO. TD 54/2008 WEST KOWLOON RECLAMATION DEVELOPMENT TRAFFIC STUDY

PROPOSED SHORT-TERM IMPROVEMENT SCHEME FOR THE JUNCTION OF LIN CHEUNG ROAD / WUI CHEUNG ROAD

Figure No.	9.9	Rev.	-
Designed By:	HEI	Scale:	1 : 1000
Checked By:	SPC	Date:	AUG. 2009
Ref. : 27816/FR/F99.DGN/LKC/27AUG09			





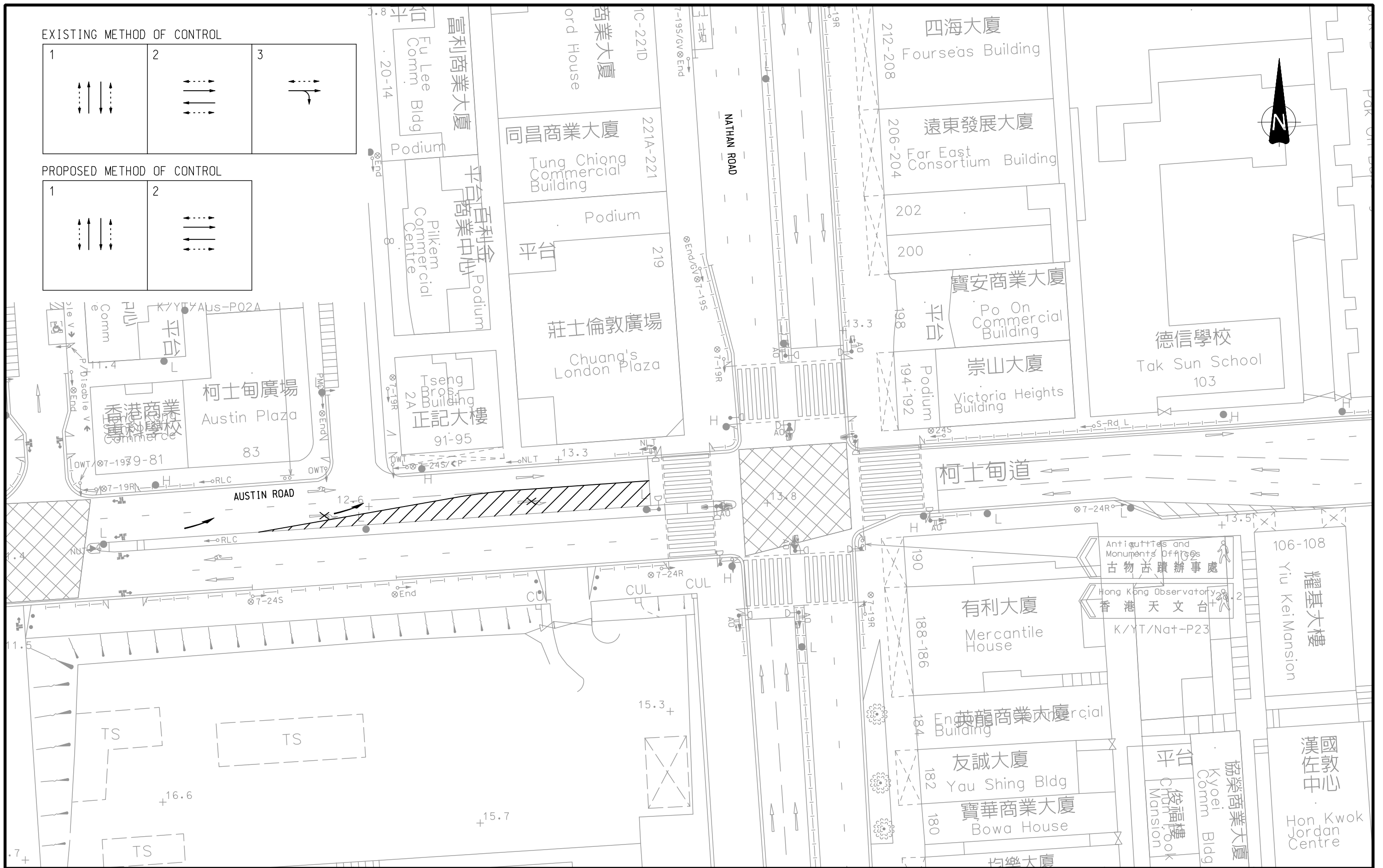
Rev.	Description	Approved	Date

AGREEMENT NO. TD 54/2008 WEST KOWLOON RECLAMATION DEVELOPMENT TRAFFIC STUDY

SCHEMATIC LAYOUT OF ADDITIONAL AUSTIN ROAD WEST EB CARRIAGEWAY

Figure No.	9.10	Rev.	-
Designed By:	HEI	Scale:	1 : 500
Checked By:	SPC	Date:	AUG. 2009
Ref. : 27814/FR/F910.DGN/LKC/27AUG09			

弘達
MVA HONG KONG LTD.



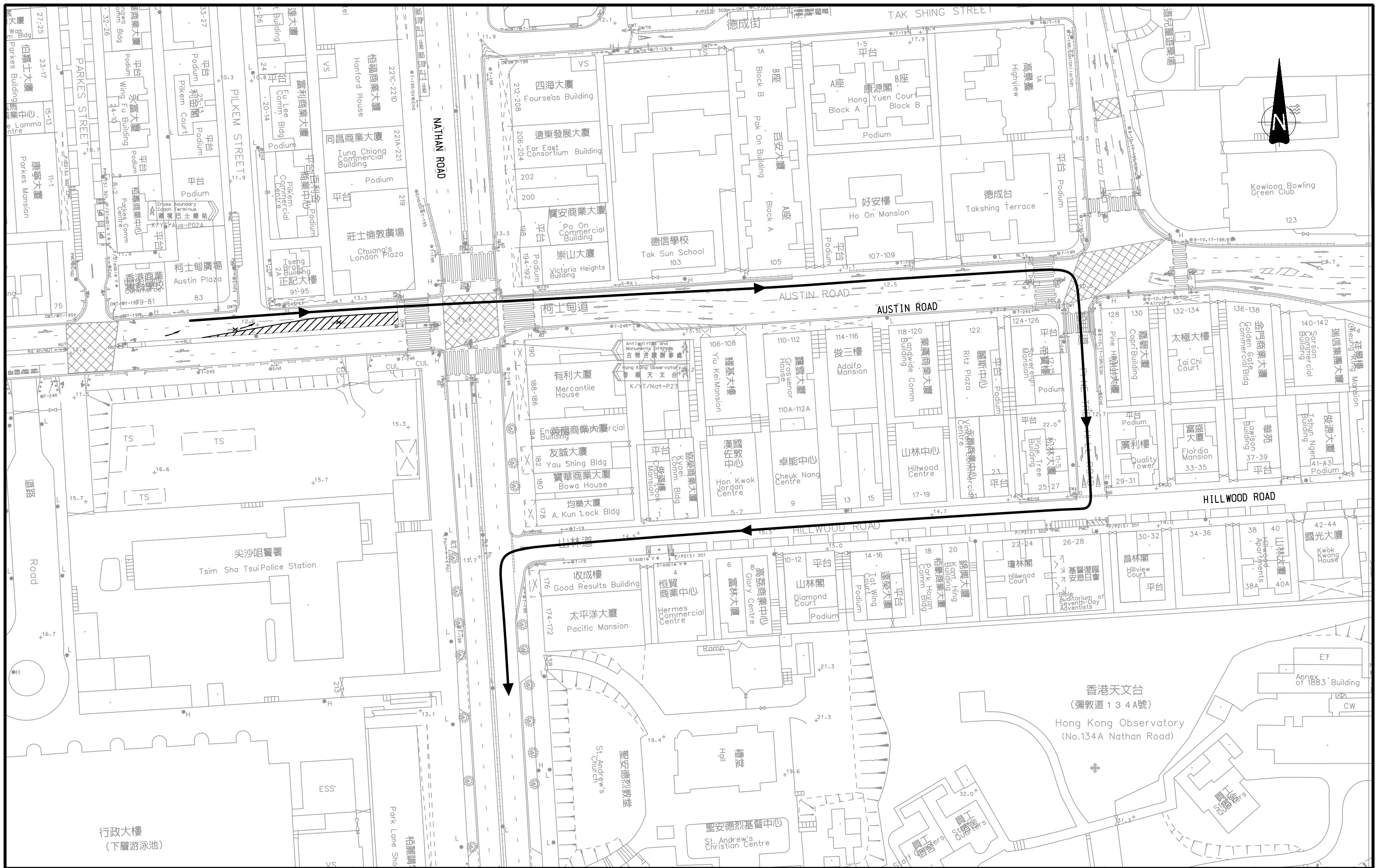
Rev.	Description	Approved	Date

AGREEMENT NO. TD 54/2008 WEST KOWLOON RECLAMATION DEVELOPMENT TRAFFIC STUDY

SIMPLIFIED MOC AND ASSOCIATED LAYOUT OF JUNCTION OF NATHAN ROAD / AUSTIN ROAD

Figure No.	9.12	Rev.	
Designed By :	HEI	Scale :	1 : 500
Checked By :	SPC	Date :	AUG. 2009
Ref. : 27814/FR/F912.DGN/LKC/27AUG09			





AGREEMENT NO. TD 54/2008 WEST KOWLOON RECLAMATION DEVELOPMENT TRAFFIC STUDY

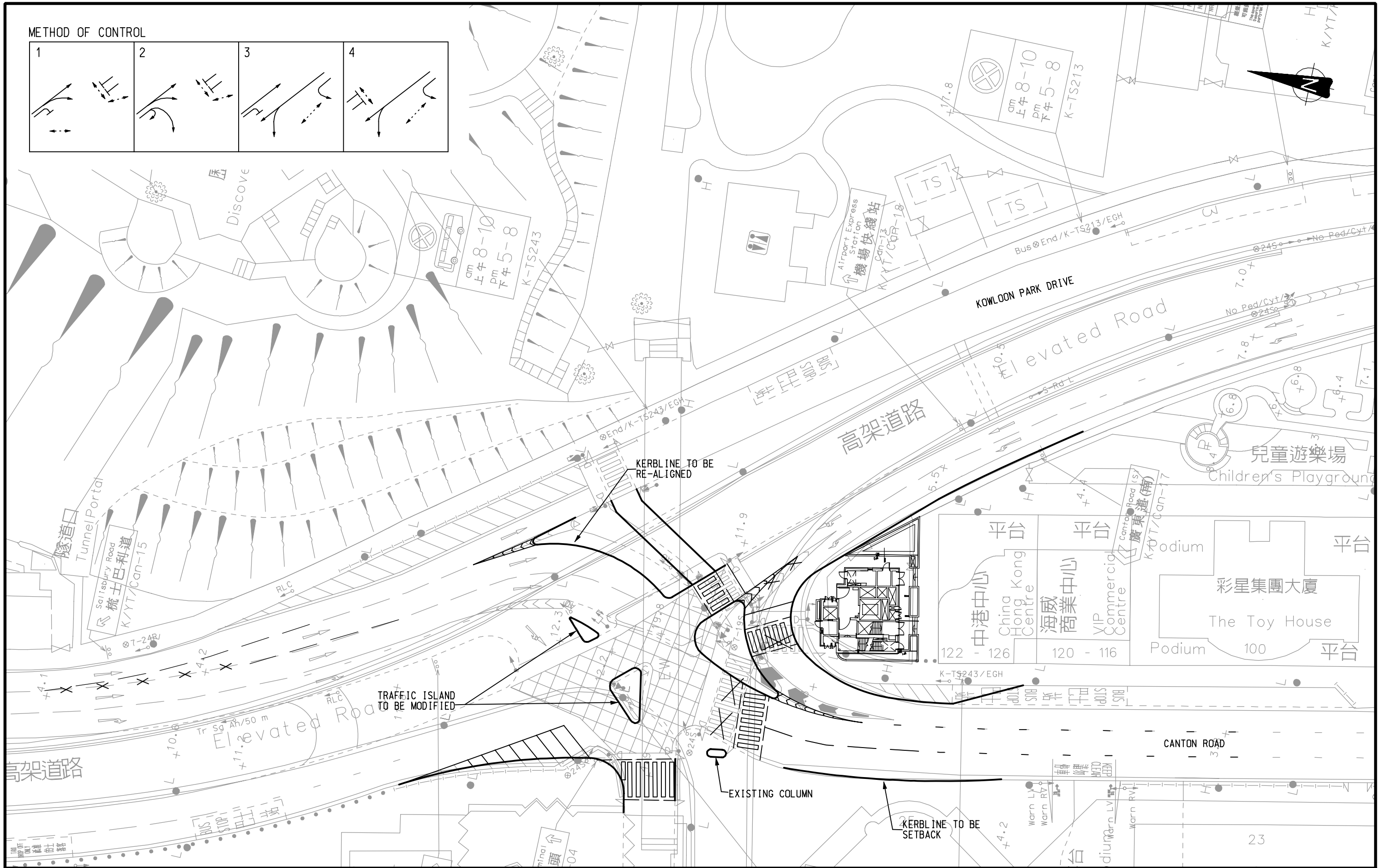
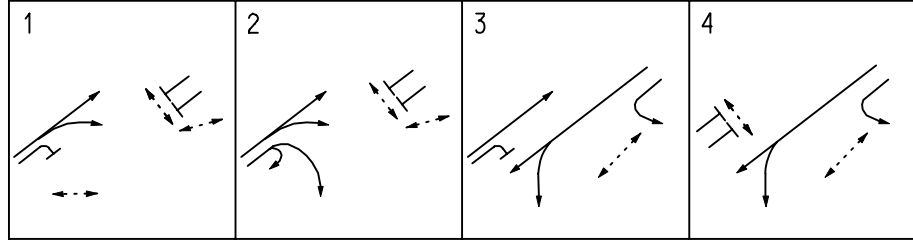
DIVERSION ROUTE FOR THE BANNED AUSTIN ROAD EB RIGHT-TURNING MOVEMENT

Figure No.	9.13	Rev.	-
Designed By:	HEI	Scale:	1 : 1000
Checked By:	SPC	Date:	AUG. 2009
Ref. : 27816/FR/F913.DGN/LKC/27AUG09			



Rev.	Description	Approved	Date

METHOD OF CONTROL



Rev.	Description	Approved	Date

AGREEMENT NO. TD 54/2008 WEST KOWLOON RECLAMATION DEVELOPMENT TRAFFIC STUDY

**PROPOSED SHORT-TERM IMPROVEMENT SCHEME
FOR THE JUNCTION OF CANTON ROAD / KOWLOON PARK DRIVE**

Figure No.	9.14	Rev.	-
Designed By :	HEI	Scale :	1 : 500
Checked By :	SPC	Date :	AUG. 2009
Ref. : 27814/FR/F914.DGN/L1Y/26AUG09			

