

YEAR

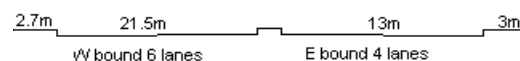
2009

LINK

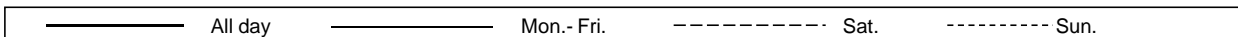
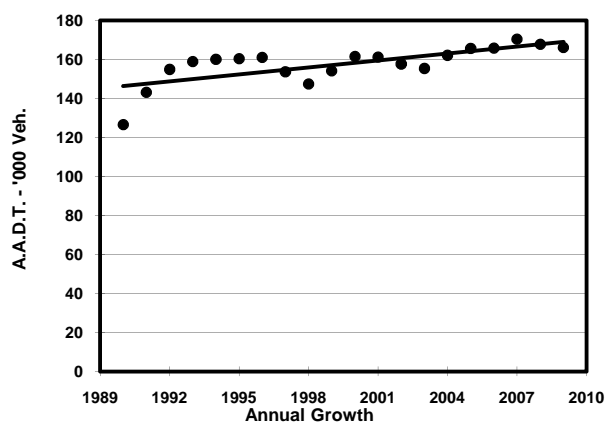
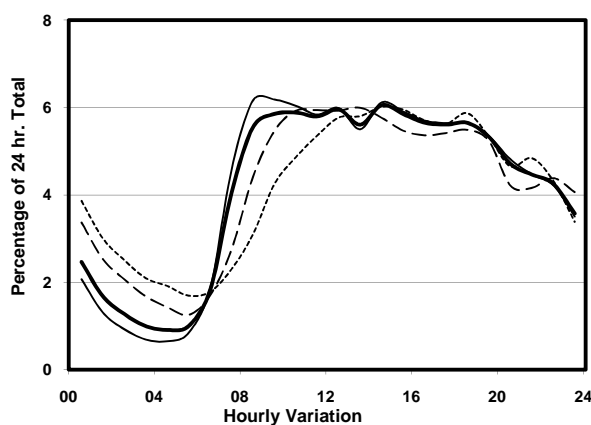
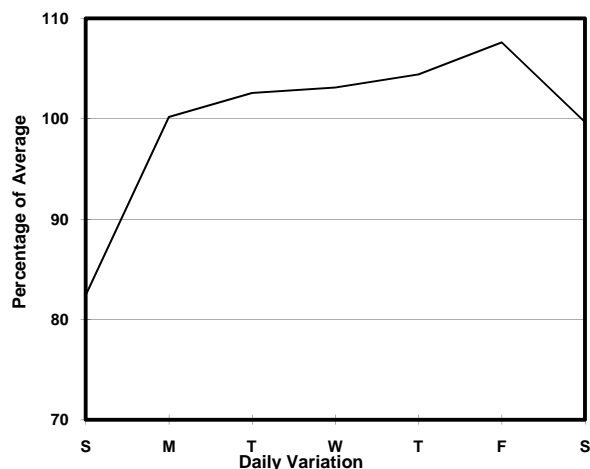
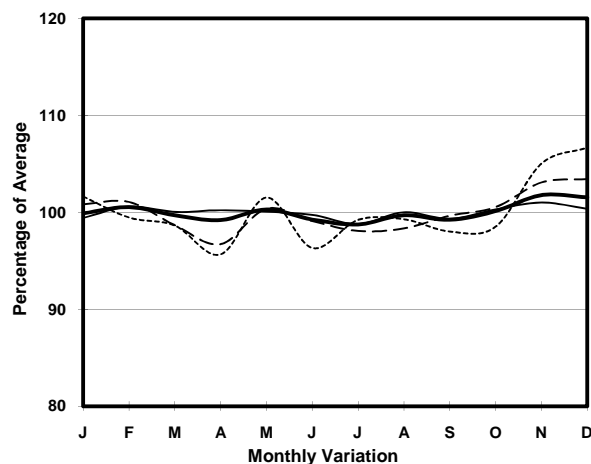
HARCOURT RD (from TAMAR ST to ARSENAL ST)

CORE STATION
ROAD NETWORK
ROAD TYPE

1001
MAJOR
URBAN TRUNK ROAD



1. TRAFFIC FLOW VARIATION AND GROWTH



2. TRAFFIC CHARACTERISTICS (BY DIRECTION)

Parameter	All - Day	Mon. - Fri.	Sat.	Sun.
EAST BOUND				
A.A.D.T.	63760	65760	65510	56180
R 12 / 24 - %	65.6	67.3	62.5	59.1
R 16 / 24 - %	84.8	86.9	80	77.8
AM Peak Hour	0900-1000	0800-0900	0900-1000	0900-1000
One-way flow at AM peak hour	3640	4100	3480	2260
T - % (AM)	-	12.4	-	-
PM Peak Hour	1600-1700	1600-1700	1800-1900	1800-1900
One-way flow at PM peak hour	3450	3560	3460	3190
T - % (PM)	-	5.3	-	-
Prop.of commercial vehicles - 16 hr.	-	6.4	-	-
WEST BOUND				
A.A.D.T.	102320	107820	101620	82100
R 12 / 24 - %	68.7	70.5	64.9	61.7
R 16 / 24 - %	87.2	88.9	83.2	81.1
AM Peak Hour	0900-1000	0900-1000	0900-1000	0900-1000
One-way flow at AM peak hour	6080	6740	5660	3620
T - % (AM)	-	7.9	-	-
PM Peak Hour	1800-1900	1800-1900	1800-1900	1800-1900
One-way flow at PM peak hour	6100	6490	5720	4920
T - % (PM)	-	7	-	-
Prop.of commercial vehicles - 16 hr.	-	6.7	-	-

3. OTHER INFORMATION AND COMMENT

4. Vehicle classification and occupancy - Monday to Friday

Time		Class of vehicle									
		Motor	Private	Taxi	Private	PLB	Goods veh.		Non	Fr. Bus	
		Cycle	Car		LB		Light	M & H	Fr. Bus	SD	DD
0700-0800	Pro	3.5	20.4	47.1	2.1	1.7	11.9	3.2	6.2	0.1	3.8
	Ocp	1.0	1.3	2.0	5.5	8.8	1.6	1.4	14.0	10.2	28.4
0800-0900	Pro	3.6	37.6	37.0	1.2	1.3	7.8	2.3	5.0	0.1	4.1
	Ocp	1.1	1.4	2.2	5.6	10.9	1.7	1.4	16.9	16.5	37.0
0900-1000 Peak hour	Pro	2.6	31.3	40.9	0.7	0.5	15.2	2.5	2.5	0.1	3.5
	Ocp	1.1	1.4	2.0	2.7	11.5	1.7	1.6	11.5	5.8	22.7
1000-1100	Pro	2.9	30.8	37.5	0.7	0.5	20.3	2.9	2.1	0.1	2.2
	Ocp	1.1	1.5	2.0	1.8	5.0	1.6	1.5	5.5	3.4	20.9
1100-1200	Pro	2.8	33.3	34.6	1.1	0.5	21.0	2.9	1.7	0.1	1.9
	Ocp	1.0	1.4	2.0	2.5	5.9	1.7	1.6	8.2	8.5	20.3
1200-1300	Pro	2.3	34.4	41.4	1.4	0.4	15.7	1.6	1.3	0.1	1.5
	Ocp	1.1	1.4	2.0	4.5	5.4	1.7	1.4	12.8	4.6	19.4
1300-1400	Pro	2.8	31.8	38.7	0.7	0.5	18.6	3.5	1.7	0.1	1.7
	Ocp	1.1	1.4	2.1	3.6	4.5	1.7	1.5	11.0	3.4	18.6
1400-1500	Pro	2.7	33.9	38.7	0.9	0.4	17.7	2.3	1.9	0.1	1.5
	Ocp	1.1	1.6	2.2	2.7	7.1	1.6	1.4	10.4	5.1	21.0
1500-1600	Pro	2.3	39.0	33.5	1.5	0.3	17.7	2.6	1.5	0.1	1.5
	Ocp	1.0	1.6	2.1	4.3	8.0	1.7	1.6	10.3	3.1	20.4
1600-1700	Pro	2.8	39.3	35.1	0.6	0.5	15.3	1.6	2.5	0.1	2.1
	Ocp	1.1	1.5	2.0	2.4	7.2	1.7	1.5	7.6	2.4	18.0
1700-1800	Pro	3.2	39.7	37.7	0.6	0.9	11.2	1.4	2.5	0.1	2.6
	Ocp	1.1	1.5	2.0	4.3	9.6	1.9	1.4	10.8	6.4	22.5
1800-1900	Pro	3.4	46.3	36.2	0.2	1.1	6.8	0.5	3.2	0.1	2.2
	Ocp	1.1	1.4	2.1	5.2	13.8	1.7	1.7	21.4	10.6	35.1
1900-2000	Pro	3.5	40.0	44.6	0.5	1.0	5.2	0.5	1.9	0.1	2.8
	Ocp	1.1	1.5	2.3	3.4	14.1	1.6	1.5	15.5	1.3	21.2
2000-2100	Pro	1.6	39.8	49.8	0.6	1.2	2.7	0.5	1.5	0.1	2.2
	Ocp	1.1	1.5	2.1	2.9	12.0	1.5	1.8	20.7	2.4	12.2
2100-2200	Pro	1.7	33.4	56.6	0.3	0.9	3.2	0.8	0.9	0.1	2.1
	Ocp	1.3	1.5	2.1	2.2	9.0	1.7	2.1	15.8	3.2	13.4
2200-2300	Pro	2.1	35.7	54.9	0.4	1.3	2.0	0.8	0.8	0.1	1.9
	Ocp	1.2	1.6	2.0	4.6	8.8	1.5	1.7	10.4	2.0	13.7
16 hours	Pro	2.7	35.7	40.9	0.9	0.8	12.4	1.9	2.3	0.1	2.3
	Ocp	1.1	1.5	2.1	3.9	9.7	1.7	1.5	13.3	5.8	23.2

Legend

- Pro.** Proportion of vehicles in % (Sum may not add up to 100% due to figure rounding)
- Ocp.** Average occupancy of vehicles
- M&H** Medium and Heavy