

YEAR

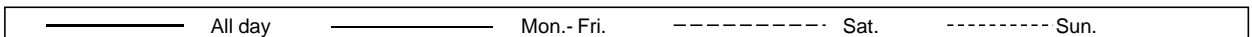
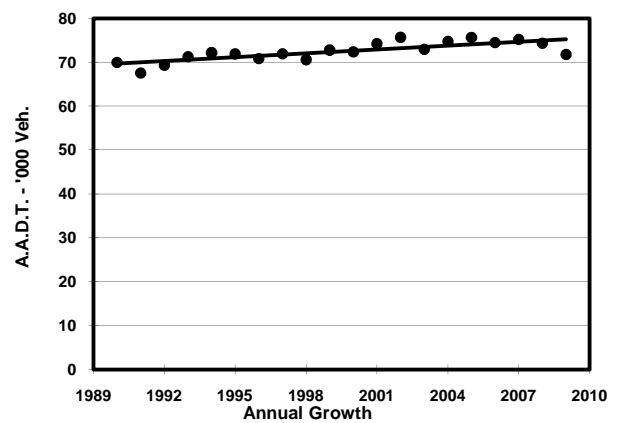
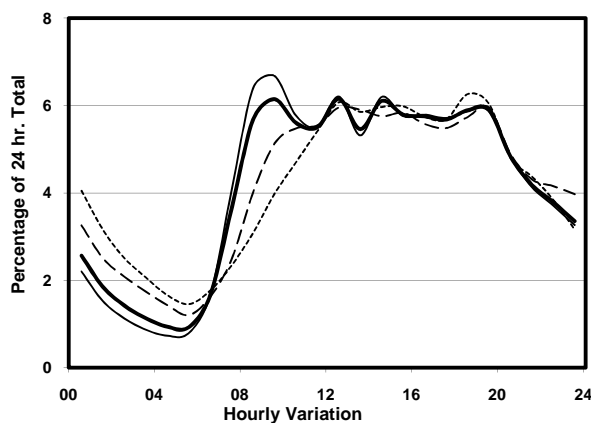
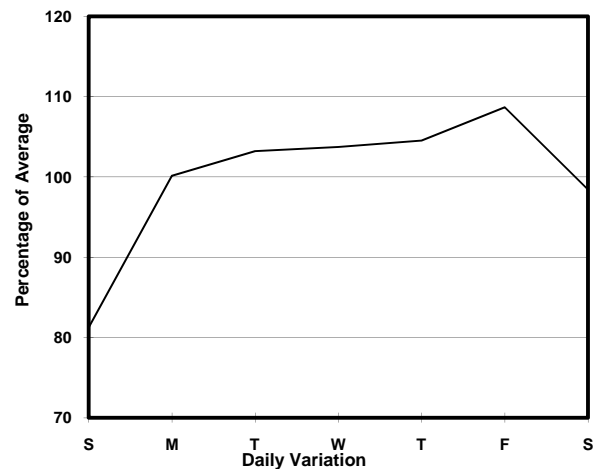
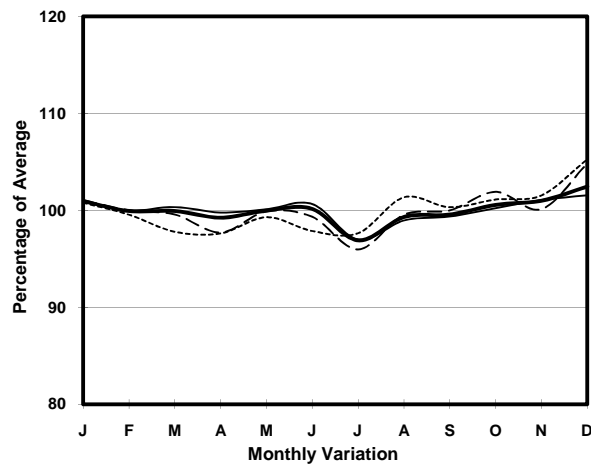
2009

LINK

QUEENSWAY (from RODNEY ST to QUEEN'S RD E)

CORE STATION
ROAD NETWORK
ROAD TYPE1007
MAJOR
PRIMARY DISTRIBUTOR

1. TRAFFIC FLOW VARIATION AND GROWTH



2. TRAFFIC CHARACTERISTICS (BY DIRECTION)

Parameter	All - Day	Mon. - Fri.	Sat.	Sun.
EAST BOUND				
A.A.D.T.	51010	53780	50320	41340
R 12 / 24 - %	67.5	69.5	62.5	60.8
R 16 / 24 - %	85.8	87.6	81.5	79.4
AM Peak Hour	0900-1000	0900-1000	0900-1000	0900-1000
One-way flow at AM peak hour	3110	3550	2610	1660
T - % (AM)	-	16.1	-	-
PM Peak Hour	1600-1700	1600-1700	1800-1900	1800-1900
One-way flow at PM peak hour	2960	3170	2810	2570
T - % (PM)	-	13.8	-	-
Prop.of commercial vehicles - 16 hr.	-	13.6	-	-
WEST BOUND				
A.A.D.T.	20760	21630	21030	17570
R 12 / 24 - %	67.2	68.8	63.7	61.8
R 16 / 24 - %	87	88.4	83.7	81.9
AM Peak Hour	0900-1000	0900-1000	0900-1000	0900-1000
One-way flow at AM peak hour	1300	1490	1050	690
T - % (AM)	-	20.7	-	-
PM Peak Hour	1800-1900	1800-1900	1700-1800	1800-1900
One-way flow at PM peak hour	1280	1330	1280	1120
T - % (PM)	-	20.4	-	-
Prop.of commercial vehicles - 16 hr.	-	20.2	-	-

3. OTHER INFORMATION AND COMMENT

4. Vehicle classification and occupancy - Monday to Friday

Time		Class of vehicle									
		Motor	Private	Taxi	Private	PLB	Goods veh.		Non	Fr. Bus	
		Cycle	Car		LB		Light	M & H	Fr. Bus	SD	DD
0700-0800	Pro	0.7	18.6	43.8	1.8	4.2	6.5	0.3	5.2	0.5	18.4
	Ocp	1.3	1.4	1.8	7.3	9.9	1.7	1.0	12.5	18.9	22.9
0800-0900	Pro	0.9	33.6	38.5	1.1	3.0	4.3	0.8	4.9	0.3	12.7
	Ocp	1.3	1.4	1.8	3.8	11.2	1.7	1.6	14.9	22.3	33.5
0900-1000 Peak hour	Pro	0.8	34.2	37.8	0.3	2.6	6.8	1.1	2.9	0.4	13.1
	Ocp	1.0	1.4	1.6	1.3	9.0	1.7	2.0	11.1	16.5	20.1
1000-1100	Pro	0.9	29.4	39.9	0.5	2.2	12.8	1.2	1.7	0.3	11.1
	Ocp	1.0	1.4	1.8	3.0	7.5	1.8	2.1	9.5	11.1	15.9
1100-1200	Pro	1.5	28.4	37.4	1.0	2.5	14.4	1.2	1.9	0.3	11.4
	Ocp	1.0	1.6	2.0	1.9	7.9	1.9	1.8	9.5	11.5	17.8
1200-1300	Pro	1.5	30.7	44.5	0.9	1.8	8.2	0.6	1.9	0.3	9.6
	Ocp	1.0	1.5	2.3	3.1	9.2	1.9	1.7	6.4	8.5	20.2
1300-1400	Pro	1.7	31.6	41.5	0.9	2.1	8.3	1.1	2.0	0.3	10.5
	Ocp	1.1	1.6	1.9	4.2	10.9	1.9	2.0	6.7	10.6	20.5
1400-1500	Pro	1.2	32.3	41.2	0.3	2.4	9.9	0.7	1.6	0.3	10.0
	Ocp	1.2	1.6	1.8	3.3	9.5	1.9	2.3	9.1	12.6	22.4
1500-1600	Pro	0.8	35.9	34.8	0.4	1.7	12.1	1.0	2.1	0.3	10.7
	Ocp	1.3	1.6	1.8	3.8	9.3	1.8	2.0	6.5	12.8	23.6
1600-1700	Pro	1.6	32.7	36.0	1.3	2.6	10.1	0.8	2.2	0.3	12.4
	Ocp	1.1	1.7	2.0	4.1	10.4	1.8	2.0	5.6	17.1	25.2
1700-1800	Pro	1.9	38.6	34.6	1.0	2.6	4.0	0.1	2.8	0.3	14.2
	Ocp	1.3	1.6	2.0	6.7	11.0	1.8	2.0	7.2	17.7	30.7
1800-1900	Pro	1.4	45.6	31.8	0.6	2.1	2.6	0.1	1.8	0.3	13.7
	Ocp	1.1	1.6	2.2	4.3	11.4	1.8	2.0	10.5	22.5	42.5
1900-2000	Pro	1.2	36.2	45.7	0.2	1.3	1.3	0.1	1.4	0.3	12.4
	Ocp	1.0	1.5	2.1	2.0	13.9	1.6	2.0	9.6	17.8	29.9
2000-2100	Pro	1.7	27.4	52.5	0.2	1.7	1.6	0.1	1.0	0.4	13.4
	Ocp	1.1	1.6	2.1	1.5	7.9	1.8	3.0	6.5	12.6	22.6
2100-2200	Pro	1.2	26.3	53.4	1.0	1.5	0.7	0.0	0.7	0.3	14.8
	Ocp	1.0	1.6	1.9	3.0	11.4	2.2	0.0	9.6	12.3	21.0
2200-2300	Pro	1.3	22.7	57.4	0.3	1.7	0.6	0.0	1.0	0.3	14.7
	Ocp	1.2	1.7	1.8	1.5	11.3	1.0	0.0	7.0	12.4	19.5
16 hours	Pro	1.3	32.2	41.2	0.7	2.2	6.8	0.6	2.2	0.3	12.4
	Ocp	1.1	1.5	1.9	4.0	10.0	1.8	1.9	9.8	15.0	24.8

Legend

- Pro.** Proportion of vehicles in % (Sum may not add up to 100% due to figure rounding)
- Ocp.** Average occupancy of vehicles
- M&H** Medium and Heavy