

YEAR 2009

CORE STATION 5018

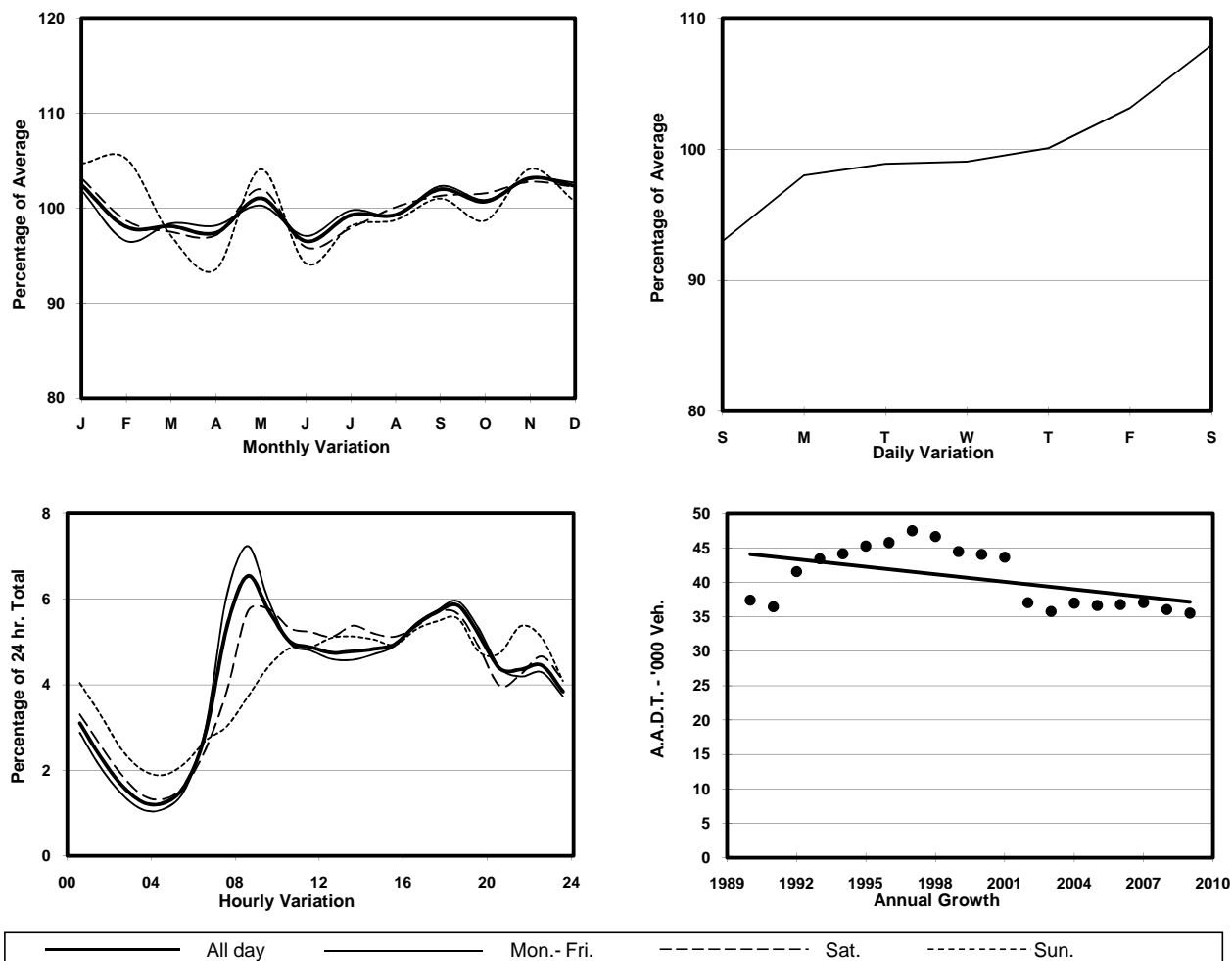
ROAD NETWORK MAJOR

ROAD TYPE DISTRICT DISTRIBUTOR

LINK TSING YI NORTH BRIDGE (from TSUEN TSING INT to TAM KON SHAN INT)



## 1. TRAFFIC FLOW VARIATION AND GROWTH



## 2. TRAFFIC CHARACTERISTICS (BY DIRECTION)

Parameter	All - Day	Mon. - Fri.	Sat.	Sun.
<b>EAST BOUND</b>				
A.A.D.T.	19640	19650	21380	18420
R 12 / 24 - %	66.1	67.3	65.5	60.2
R 16 / 24 - %	82.9	83.8	82.2	78.7
AM Peak Hour	0800-0900	0800-0900	0800-0900	0900-1000
One-way flow at AM peak hour	1470	1640	1370	920
T - % (AM)	-	10.5	-	-
PM Peak Hour	1700-1800	1700-1800	1700-1800	1800-1900
One-way flow at PM peak hour	1100	1110	1210	1020
T - % (PM)	-	21.2	-	-
Prop.of commercial vehicles - 16 hr.	-	16.6	-	-
<b>WEST BOUND</b>				
A.A.D.T.	15890	15950	17170	14760
R 12 / 24 - %	60.8	62	60.8	54
R 16 / 24 - %	81.1	82.3	80	75.7
AM Peak Hour	0800-0900	0800-0900	0900-1000	0900-1000
One-way flow at AM peak hour	850	940	890	550
T - % (AM)	-	21	-	-
PM Peak Hour	1800-1900	1800-1900	1800-1900	1800-1900
One-way flow at PM peak hour	980	1010	1000	820
T - % (PM)	-	16.1	-	-
Prop.of commercial vehicles - 16 hr.	-	18.5	-	-

## 3. OTHER INFORMATION AND COMMENT

**4. Vehicle classification and occupancy - Monday to Friday**

Time		Class of vehicle									
		Motor	Private	Taxi	Private	PLB	Goods veh.		Non	Fr. Bus	
		Cycle	Car		LB		Light	M & H	Fr. Bus	SD	DD
0700-0800	Pro	2.3	17.4	30.6	1.1	11.5	14.7	3.6	7.3	0.1	11.3
	Ocp	1.2	1.5	1.9	6.8	9.8	1.6	1.5	13.6	6.0	35.2
0800-0900	Pro	3.0	25.9	28.6	2.3	7.6	18.0	1.7	5.4	0.1	7.5
	Ocp	1.0	1.4	1.8	6.3	10.0	1.6	1.2	11.2	14.5	42.7
0900-1000	Pro	2.7	26.1	26.1	0.6	7.2	21.4	4.5	2.1	0.1	9.2
	Ocp	1.2	1.4	1.8	3.3	8.5	1.5	1.4	3.8	4.5	23.5
1000-1100	Pro	3.5	21.8	26.4	1.5	5.9	26.1	5.2	1.1	0.2	8.3
	Ocp	1.1	1.4	1.7	3.1	7.0	1.6	1.5	3.4	4.0	18.8
1100-1200	Pro	3.5	17.7	18.4	1.2	8.6	34.2	6.0	2.3	0.0	8.1
	Ocp	1.0	1.4	1.7	4.8	5.7	1.5	1.5	1.6	0.0	17.9
1200-1300	Pro	1.8	17.6	20.6	1.5	8.5	29.1	7.0	5.3	0.1	8.5
	Ocp	1.0	1.4	1.6	5.7	7.7	1.5	1.3	5.8	2.0	20.4
1300-1400	Pro	2.1	19.5	20.7	1.4	9.7	26.6	8.6	3.1	0.1	8.1
	Ocp	1.1	1.5	1.7	2.3	7.7	1.5	1.6	4.5	6.5	20.5
1400-1500	Pro	2.8	22.3	17.2	0.3	8.6	29.1	9.6	1.3	0.1	8.9
	Ocp	1.0	1.4	1.8	3.0	7.2	1.6	1.5	3.2	3.5	19.3
1500-1600	Pro	3.5	23.7	12.8	1.6	8.1	29.5	7.9	4.2	0.1	8.8
	Ocp	1.1	1.6	1.8	5.6	8.7	1.7	1.4	14.7	3.5	17.7
1600-1700	Pro	3.9	18.3	23.2	2.6	7.5	23.6	5.3	8.1	0.0	7.7
	Ocp	1.1	1.5	1.6	5.6	10.0	1.7	1.4	7.3	0.0	23.0
1700-1800	Pro	4.9	23.4	17.9	3.3	7.8	22.6	4.7	6.8	0.1	8.5
	Ocp	1.2	1.7	1.8	3.7	12.1	1.6	1.5	5.2	9.0	28.8
1800-1900	Pro	6.3	30.1	11.8	0.7	10.2	22.6	3.8	4.3	0.1	10.2
	Ocp	1.1	1.3	2.4	3.3	12.0	1.5	1.4	8.6	18.0	39.3
1900-2000	Pro	4.1	36.8	22.0	0.4	9.5	13.1	1.5	3.7	0.1	8.8
	Ocp	1.3	1.5	2.3	2.0	12.5	1.4	1.6	16.8	2.5	34.7
2000-2100	Pro	2.9	32.9	31.1	0.5	9.7	9.1	2.1	1.3	0.0	10.5
	Ocp	1.2	1.5	1.9	3.0	7.0	1.5	1.4	4.8	0.0	20.1
2100-2200	Pro	6.1	28.9	29.2	0.3	11.0	11.3	2.9	0.9	0.1	9.5
	Ocp	1.3	1.6	2.1	3.0	7.3	1.5	1.5	1.0	6.0	20.7
2200-2300	Pro	6.0	34.5	29.3	0.3	11.0	6.8	3.0	0.0	0.1	9.0
	Ocp	1.3	1.6	1.9	3.0	6.5	1.2	1.2	0.0	10.0	21.1
16 hours	Pro	3.7	24.6	22.9	1.3	8.8	21.2	4.7	3.8	0.1	8.9
	Ocp	1.1	1.5	1.8	4.6	8.9	1.6	1.4	8.7	6.7	26.2

**Legend**

- Pro.** Proportion of vehicles in % (Sum may not add up to 100% due to figure rounding)
- Ocp.** Average occupancy of vehicles
- M&H** Medium and Heavy