

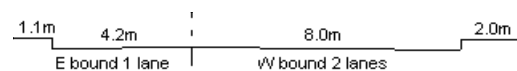
YEAR 2009

CORE STATION 5023

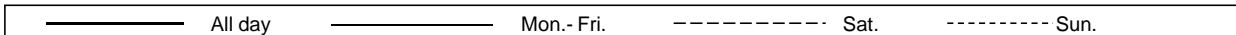
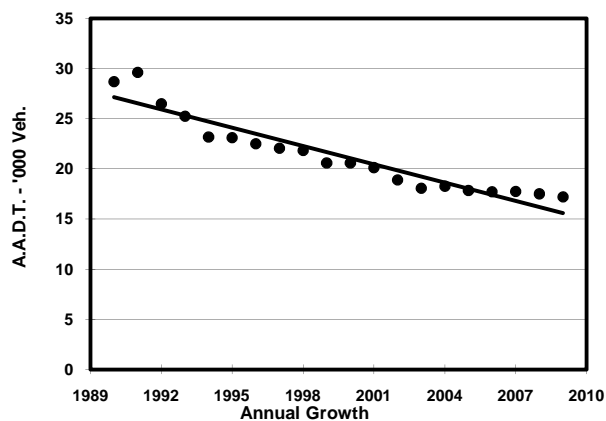
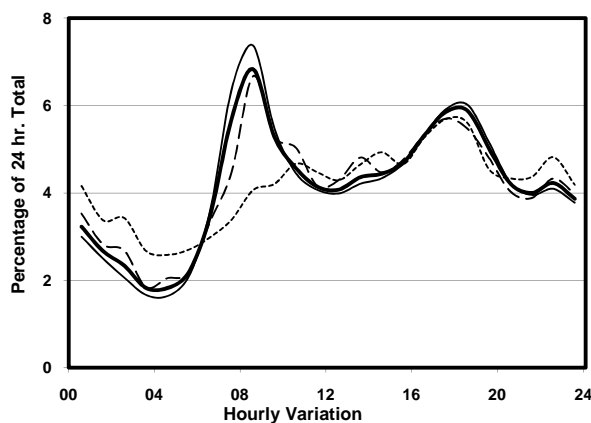
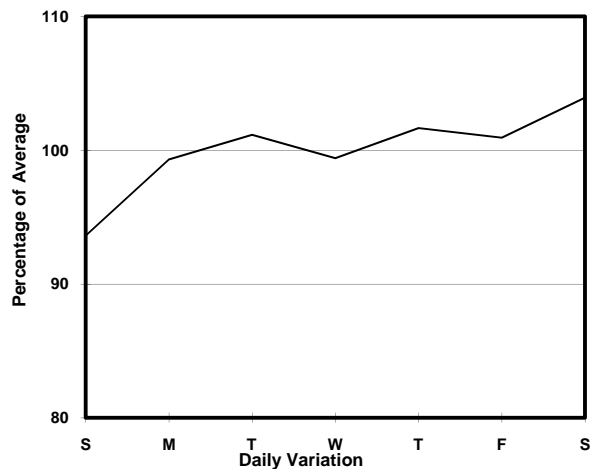
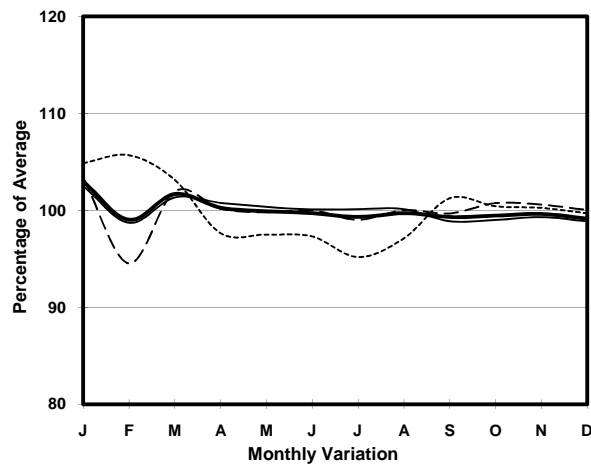
ROAD NETWORK MAJOR

ROAD TYPE DISTRICT DISTRIBUTOR

LINK PO LAM RD (from ANDERSON RD to TSUI LAM RD)



## 1. TRAFFIC FLOW VARIATION AND GROWTH



## 2. TRAFFIC CHARACTERISTICS (BY DIRECTION)

Parameter	All - Day	Mon. - Fri.	Sat.	Sun.
<b>EAST BOUND</b>				
A.A.D.T.	8420	8500	8790	7880
R 12 / 24 - %	60.6	61.7	60	55.7
R 16 / 24 - %	79.7	80.7	78.9	75.1
AM Peak Hour	0800-0900	0800-0900	0800-0900	0900-1000
One-way flow at AM peak hour	450	490	440	310
T - % (AM)	-	12.4	-	-
PM Peak Hour	1800-1900	1800-1900	1700-1800	1700-1800
One-way flow at PM peak hour	560	600	540	480
T - % (PM)	-	12	-	-
Prop.of commercial vehicles - 16 hr.	-	14.2	-	-
<b>WEST BOUND</b>				
A.A.D.T.	8770	8830	9150	8270
R 12 / 24 - %	61.6	62.7	61	56.1
R 16 / 24 - %	77.5	78.6	76.3	72.9
AM Peak Hour	0800-0900	0800-0900	0800-0900	0900-1000
One-way flow at AM peak hour	720	790	760	370
T - % (AM)	-	9.2	-	-
PM Peak Hour	1700-1800	1700-1800	1700-1800	1800-1900
One-way flow at PM peak hour	480	490	490	460
T - % (PM)	-	15.3	-	-
Prop.of commercial vehicles - 16 hr.	-	14.4	-	-

## 3. OTHER INFORMATION AND COMMENT

**4. Vehicle classification and occupancy - Monday to Friday**

Time		Class of vehicle									
		Motor	Private	Taxi	Private	PLB	Goods veh.		Non	Fr. Bus	
		Cycle	Car		LB		Light	M & H	Fr. Bus	SD	DD
0700-0800	Pro	12.4	13.6	26.8	2.7	8.5	18.6	4.7	3.9	0.0	8.7
	Ocp	1.1	1.3	2.0	5.9	13.3	1.4	1.3	9.3	0.0	42.9
0800-0900	Pro	8.3	29.2	26.8	2.8	5.6	17.1	2.3	3.7	0.0	4.2
	Ocp	1.1	1.4	1.8	5.6	15.0	1.5	1.2	13.9	0.0	53.8
0900-1000	Pro	5.3	20.3	26.9	2.2	7.9	22.1	4.9	1.8	0.0	8.7
	Ocp	1.1	1.2	1.7	1.4	8.5	1.5	1.2	9.5	0.0	27.6
1000-1100	Pro	3.7	21.8	22.9	1.1	9.0	27.1	5.9	0.0	0.0	8.5
	Ocp	1.1	1.4	1.6	1.5	6.4	1.5	1.0	0.0	0.0	18.4
1100-1200	Pro	2.8	23.5	15.1	2.8	8.9	30.7	6.1	1.7	0.0	8.4
	Ocp	1.0	1.2	1.9	2.2	6.8	1.5	1.0	10.7	0.0	25.1
1200-1300	Pro	1.1	25.3	16.3	5.1	12.4	22.5	5.1	3.9	0.0	8.4
	Ocp	1.0	1.4	1.5	2.1	4.1	1.5	1.6	4.0	0.0	21.0
1300-1400	Pro	3.3	18.8	18.3	3.3	7.2	31.6	6.6	2.8	0.0	8.0
	Ocp	1.0	1.4	1.7	1.5	7.0	1.4	1.3	1.6	0.0	21.0
1400-1500	Pro	2.4	20.2	16.6	4.7	8.9	30.9	5.3	1.8	0.0	9.2
	Ocp	1.0	1.5	1.7	1.4	6.5	1.4	1.1	1.0	0.0	20.1
1500-1600	Pro	2.3	21.5	19.2	3.5	9.3	24.4	4.7	7.0	0.0	8.1
	Ocp	1.3	1.4	1.6	4.8	6.9	1.5	1.4	10.6	0.0	24.7
1600-1700	Pro	7.5	22.8	25.6	3.7	6.1	18.6	1.4	6.5	0.0	7.8
	Ocp	1.1	1.6	1.5	3.0	12.4	1.4	1.7	10.1	0.0	35.3
1700-1800	Pro	6.0	12.0	39.8	2.6	5.6	19.3	3.0	4.7	0.0	7.1
	Ocp	1.1	1.4	1.5	3.3	11.4	1.5	1.0	9.9	0.0	44.0
1800-1900	Pro	9.6	27.8	22.2	1.7	9.1	16.9	3.5	1.3	0.1	7.8
	Ocp	1.2	1.3	1.6	1.3	14.2	1.7	1.1	33.7	12.0	43.2
1900-2000	Pro	6.2	35.9	22.6	0.5	10.8	13.8	1.0	0.5	0.1	8.6
	Ocp	1.1	1.5	1.5	5.0	11.6	1.6	1.5	1.0	15.0	36.5
2000-2100	Pro	0.7	31.9	34.8	0.7	10.9	9.4	0.0	0.7	0.0	10.9
	Ocp	1.0	1.4	1.4	1.0	9.6	1.4	0.0	2.0	0.0	21.7
2100-2200	Pro	7.9	33.0	30.1	0.0	7.9	8.6	0.7	0.7	0.0	11.1
	Ocp	1.3	1.6	1.6	0.0	7.5	1.5	1.0	1.0	0.0	23.0
2200-2300	Pro	6.4	29.2	40.9	0.0	5.8	7.0	1.8	0.0	0.0	8.8
	Ocp	1.2	1.8	1.8	0.0	9.5	1.6	1.3	0.0	0.0	24.8
16 hours	Pro	5.9	23.9	25.5	2.4	8.1	19.9	3.5	2.8	0.1	8.0
	Ocp	1.1	1.5	1.7	3.2	9.7	1.5	1.2	10.0	13.5	31.1

**Legend**

- Pro.** Proportion of vehicles in % (Sum may not add up to 100% due to figure rounding)
- Ocp.** Average occupancy of vehicles
- M&H** Medium and Heavy