

YEAR 2009

CORE STATION 5024

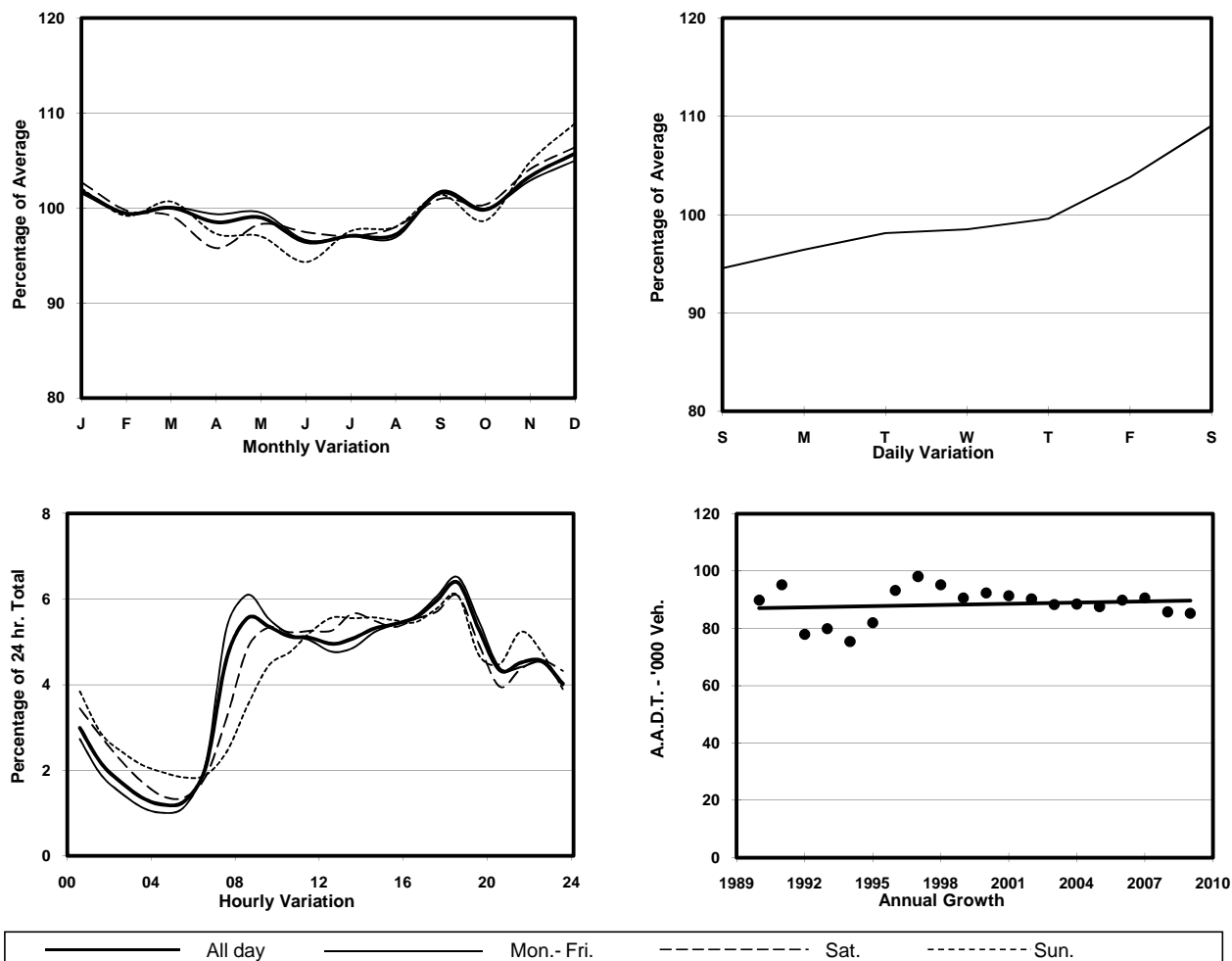
ROAD NETWORK MAJOR

ROAD TYPE URBAN TRUNK ROAD

LINK LION ROCK TUNNEL (from TOLL PLAZA to SOUTH PORTAL)



1. TRAFFIC FLOW VARIATION AND GROWTH



2. TRAFFIC CHARACTERISTICS (BY DIRECTION)

Parameter	All - Day	Mon. - Fri.	Sat.	Sun.
SOUTH BOUND				
A.A.D.T.	41670	41460	45710	39730
R 12 / 24 - %	69.7	70.8	68.2	65.6
R 16 / 24 - %	85.5	86.3	84.1	83
AM Peak Hour	0800-0900	0800-0900	0900-1000	0900-1000
One-way flow at AM peak hour	2730	2940	2900	2150
T - % (AM)	-	17.5	-	-
PM Peak Hour	1800-1900	1800-1900	1800-1900	1800-1900
One-way flow at PM peak hour	2650	2620	2830	2710
T - % (PM)	-	14.6	-	-
Prop.of commercial vehicles - 16 hr.	-	18	-	-
NORTH BOUND				
A.A.D.T.	43570	43460	47620	41150
R 12 / 24 - %	59.5	60.7	58.2	54.6
R 16 / 24 - %	81	82.7	77.8	75.5
AM Peak Hour	0800-0900	0800-0900	0900-1000	0900-1000
One-way flow at AM peak hour	2020	2250	2080	1450
T - % (AM)	-	19.6	-	-
PM Peak Hour	1800-1900	1800-1900	1800-1900	1700-1800
One-way flow at PM peak hour	2800	2920	2850	2250
T - % (PM)	-	13	-	-
Prop.of commercial vehicles - 16 hr.	-	16.9	-	-

3. OTHER INFORMATION AND COMMENT

4. Vehicle classification and occupancy - Monday to Friday

Time		Class of vehicle									
		Motor	Private	Taxi	Private	PLB	Goods veh.		Non	Fr. Bus	
		Cycle	Car		LB		Light	M & H	Fr. Bus	SD	DD
0700-0800	Pro	2.6	40.2	11.8	2.5	0.5	19.1	6.1	9.2	0.0	8.0
	Ocp	1.2	1.6	2.2	7.9	11.0	1.5	1.2	12.6	0.0	46.3
0800-0900	Pro	1.7	54.2	8.3	1.1	0.5	15.7	5.1	7.1	0.0	6.2
	Ocp	1.0	1.4	2.0	7.0	14.0	1.7	1.5	13.4	0.0	47.0
0900-1000	Pro	1.3	38.7	10.7	0.9	0.4	27.5	9.1	4.1	0.0	7.3
	Ocp	1.2	1.4	2.0	2.4	7.8	1.5	1.3	6.7	0.0	26.8
1000-1100	Pro	1.1	39.1	9.9	1.4	0.3	29.6	10.1	2.7	0.1	5.9
	Ocp	1.0	1.4	1.8	1.9	7.0	1.5	1.3	10.7	1.0	25.8
1100-1200	Pro	1.0	30.6	12.4	1.3	0.4	31.8	11.4	5.2	0.0	5.8
	Ocp	1.2	1.4	2.0	1.3	6.8	1.4	1.2	12.9	0.0	28.2
1200-1300	Pro	0.7	40.2	11.0	1.7	0.3	26.1	8.4	5.3	0.0	6.2
	Ocp	1.1	1.7	1.9	3.4	4.3	1.4	1.2	10.2	0.0	26.1
1300-1400	Pro	2.2	36.9	9.5	1.3	0.3	29.1	10.1	4.4	0.0	6.3
	Ocp	1.1	1.6	2.0	6.2	6.3	1.6	1.4	13.7	0.0	30.1
1400-1500	Pro	0.8	40.5	8.1	1.6	0.3	28.0	11.1	4.3	0.0	5.3
	Ocp	1.1	1.6	2.2	3.0	7.0	1.5	1.2	5.2	0.0	27.3
1500-1600	Pro	1.4	43.3	9.0	1.5	0.2	25.7	8.4	5.1	0.0	5.4
	Ocp	1.0	1.6	2.0	5.3	5.0	1.6	1.3	12.1	0.0	28.8
1600-1700	Pro	1.3	40.4	11.6	2.0	0.3	25.7	7.1	5.7	0.0	6.0
	Ocp	1.1	1.5	1.6	3.9	7.3	1.7	1.3	11.4	0.0	32.7
1700-1800	Pro	2.0	45.0	9.0	2.0	0.6	23.4	6.2	4.5	0.0	7.2
	Ocp	1.2	1.4	1.8	2.3	8.3	1.6	1.2	7.6	0.0	41.9
1800-1900 Peak hour	Pro	3.2	58.2	7.5	1.0	0.8	15.6	3.7	3.9	0.0	6.1
	Ocp	1.1	1.5	2.0	3.2	15.1	1.7	1.2	15.6	0.0	56.0
1900-2000	Pro	1.9	66.2	7.2	0.4	0.9	13.6	2.0	2.1	0.0	5.8
	Ocp	1.2	1.5	2.3	2.8	12.0	1.5	1.2	20.7	0.0	51.1
2000-2100	Pro	1.5	63.1	13.7	0.2	1.1	9.1	2.5	2.5	0.0	6.3
	Ocp	1.3	1.5	1.8	1.0	12.7	1.5	1.4	10.3	0.0	37.5
2100-2200	Pro	2.7	57.1	17.8	0.5	2.1	7.5	1.9	3.0	0.0	7.3
	Ocp	1.2	1.6	2.1	1.3	9.6	1.5	1.3	10.1	0.0	34.5
2200-2300	Pro	2.6	52.8	25.9	0.2	2.3	5.7	1.8	1.5	0.0	7.2
	Ocp	1.2	1.6	2.1	1.5	9.7	1.4	1.1	8.7	0.0	35.8
16 hours	Pro	1.7	46.8	11.1	1.2	0.7	21.0	6.6	4.5	0.1	6.4
	Ocp	1.2	1.5	2.0	4.0	10.2	1.6	1.3	11.5	1.0	36.6

Legend

- Pro.** Proportion of vehicles in % (Sum may not add up to 100% due to figure rounding)
Ocp. Average occupancy of vehicles
M&H Medium and Heavy