

YEAR

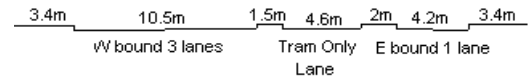
2009

LINK

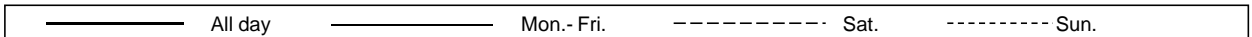
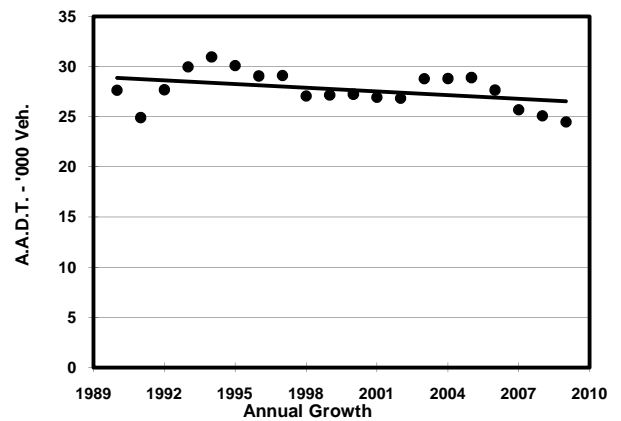
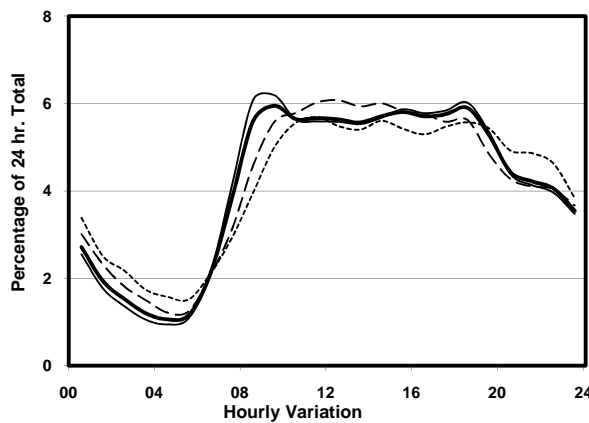
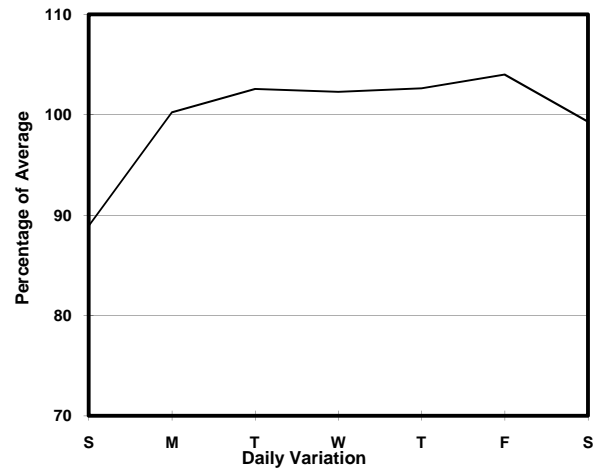
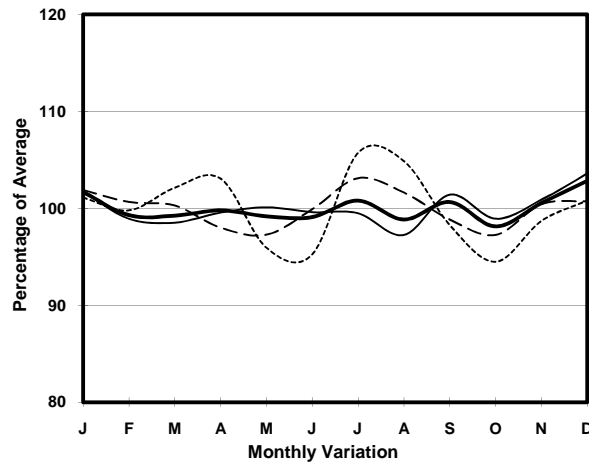
KING'S RD (from NORTH POINT RD to TONG SHUI RD)

CORE STATION
ROAD NETWORK
ROAD TYPE

1008
MAJOR
PRIMARY DISTRIBUTOR



1. TRAFFIC FLOW VARIATION AND GROWTH



2. TRAFFIC CHARACTERISTICS (BY DIRECTION)

Parameter	All - Day	Mon. - Fri.	Sat.	Sun.
EAST BOUND				
A.A.D.T.	2950	2990	2970	2870
R 12 / 24 - %	63.2	63.5	62.7	62.4
R 16 / 24 - %	84.2	84.5	83.9	83.3
AM Peak Hour	0900-1000	0900-1000	0900-1000	0900-1000
One-way flow at AM peak hour	160	170	160	140
T - % (AM)	-	-	-	-
PM Peak Hour	1600-1700	1600-1700	1700-1800	1600-1700
One-way flow at PM peak hour	170	170	170	160
T - % (PM)	-	-	-	-
Prop.of commercial vehicles - 16 hr.	-	-	-	-
WEST BOUND				
A.A.D.T.	21520	22200	21510	19010
R 12 / 24 - %	67.2	68.4	66.3	61.2
R 16 / 24 - %	84.8	85.8	83.1	80.9
AM Peak Hour	0900-1000	0900-1000	0900-1000	0900-1000
One-way flow at AM peak hour	1300	1390	1210	950
T - % (AM)	-	-	-	-
PM Peak Hour	1800-1900	1800-1900	1600-1700	1800-1900
One-way flow at PM peak hour	1290	1360	1250	1060
T - % (PM)	-	-	-	-
Prop.of commercial vehicles - 16 hr.	-	-	-	-

3. OTHER INFORMATION AND COMMENT