

YEAR

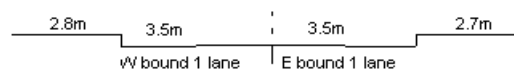
2009

LINK

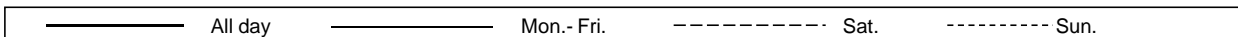
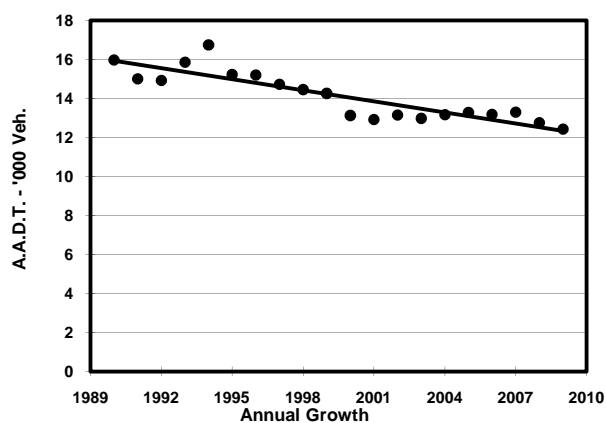
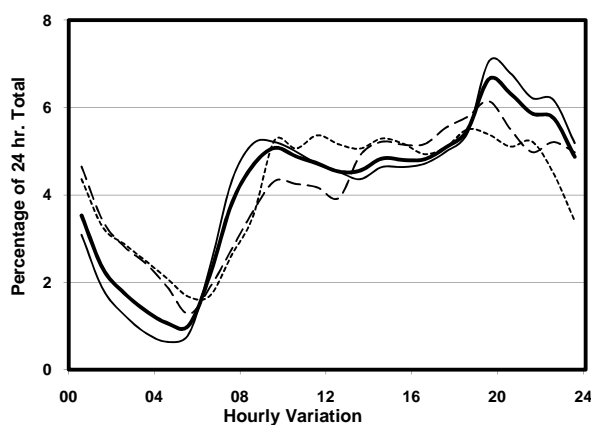
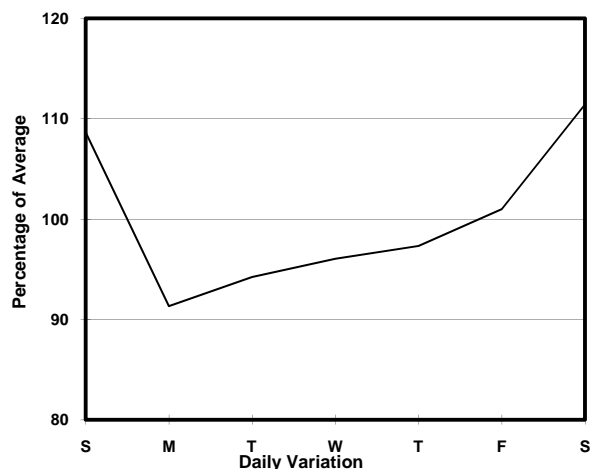
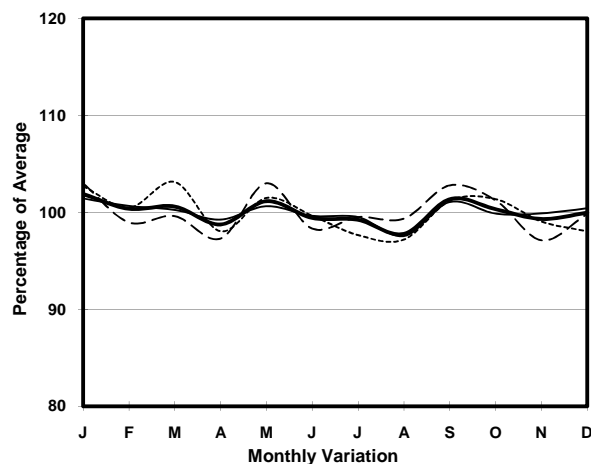
CAINE RD (from SEYMOUR RD to ABERDEEN ST)

CORE STATION
ROAD NETWORK
ROAD TYPE

1013
MAJOR
DISTRICT DISTRIBUTOR



1. TRAFFIC FLOW VARIATION AND GROWTH



2. TRAFFIC CHARACTERISTICS (BY DIRECTION)

Parameter	All - Day	Mon. - Fri.	Sat.	Sun.
EAST BOUND				
A.A.D.T.	8720	8650	9310	8290
R 12 / 24 - %	61.5	63.2	56.9	57.4
R 16 / 24 - %	82.9	85.4	77	76.6
AM Peak Hour	0900-1000	0900-1000	0900-1000	0900-1000
One-way flow at AM peak hour	490	500	490	400
T - % (AM)	-	-	-	-
PM Peak Hour	1800-1900	1800-1900	1800-1900	1800-1900
One-way flow at PM peak hour	520	530	500	460
T - % (PM)	-	-	-	-
Prop.of commercial vehicles - 16 hr.	-	-	-	-
WEST BOUND				
A.A.D.T.	3700	3220	4500	5170
R 12 / 24 - %	47.5	43	50.5	58.9
R 16 / 24 - %	79.6	80.1	76	80.9
AM Peak Hour	0900-1000	0700-0800	0800-0900	0900-1000
One-way flow at AM peak hour	140	130	110	300
T - % (AM)	-	-	-	-
PM Peak Hour	1700-1800	1600-1700	1800-1900	1800-1900
One-way flow at PM peak hour	170	120	300	280
T - % (PM)	-	-	-	-
Prop.of commercial vehicles - 16 hr.	-	-	-	-

3. OTHER INFORMATION AND COMMENT