

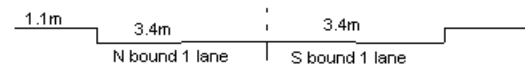
YEAR 2009

CORE STATION 1015

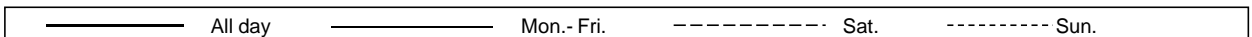
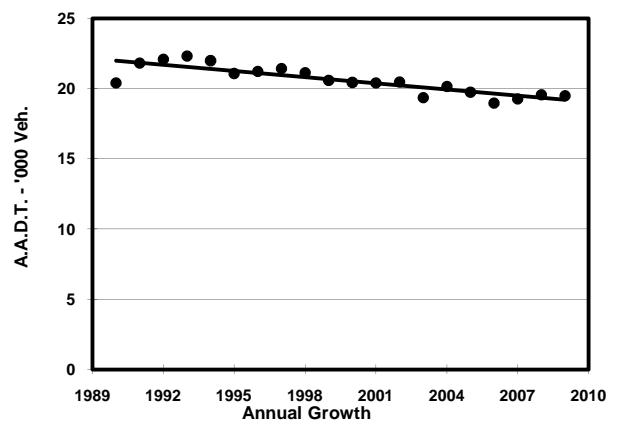
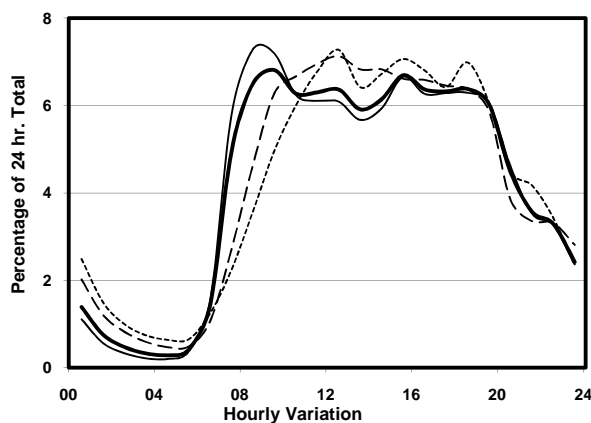
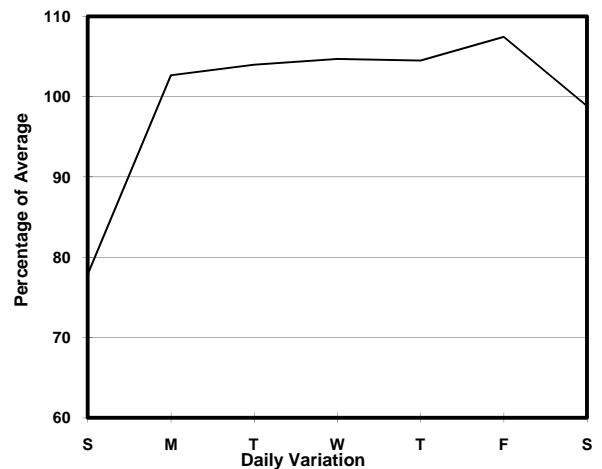
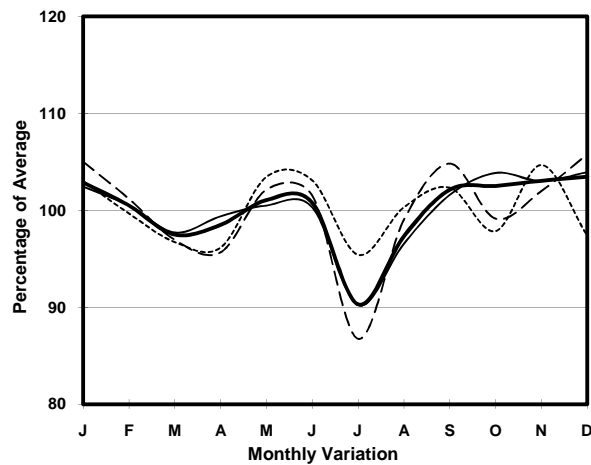
ROAD NETWORK MAJOR

ROAD TYPE DISTRICT DISTRIBUTOR

LINK STUBBS RD (from QUEEN'S RD E to STUBBS RD FO
<H119> NORTHERN END)



1. TRAFFIC FLOW VARIATION AND GROWTH



2. TRAFFIC CHARACTERISTICS (BY DIRECTION)

Parameter	All - Day	Mon. - Fri.	Sat.	Sun.
SOUTH BOUND				
A.A.D.T.	8110	8580	8020	6490
R 12 / 24 - %	73.5	74.1	73.1	70.2
R 16 / 24 - %	92	92.8	89.9	89.3
AM Peak Hour	0900-1000	0900-1000	0900-1000	0900-1000
One-way flow at AM peak hour	540	590	540	350
T - % (AM)	-	-	-	-
PM Peak Hour	1600-1700	1800-1900	1600-1700	1600-1700
One-way flow at PM peak hour	500	520	520	440
T - % (PM)	-	-	-	-
Prop.of commercial vehicles - 16 hr.	-	-	-	-
NORTH BOUND				
A.A.D.T.	11370	12040	11500	8850
R 12 / 24 - %	76.2	77	74.9	72
R 16 / 24 - %	92.8	93.6	91	89.5
AM Peak Hour	0800-0900	0800-0900	0900-1000	0900-1000
One-way flow at AM peak hour	800	970	690	420
T - % (AM)	-	-	-	-
PM Peak Hour	1700-1800	1700-1800	1800-1900	1800-1900
One-way flow at PM peak hour	760	810	770	670
T - % (PM)	-	-	-	-
Prop.of commercial vehicles - 16 hr.	-	-	-	-

3. OTHER INFORMATION AND COMMENT