

YEAR 2009

CORE STATION 1028

ROAD NETWORK MAJOR

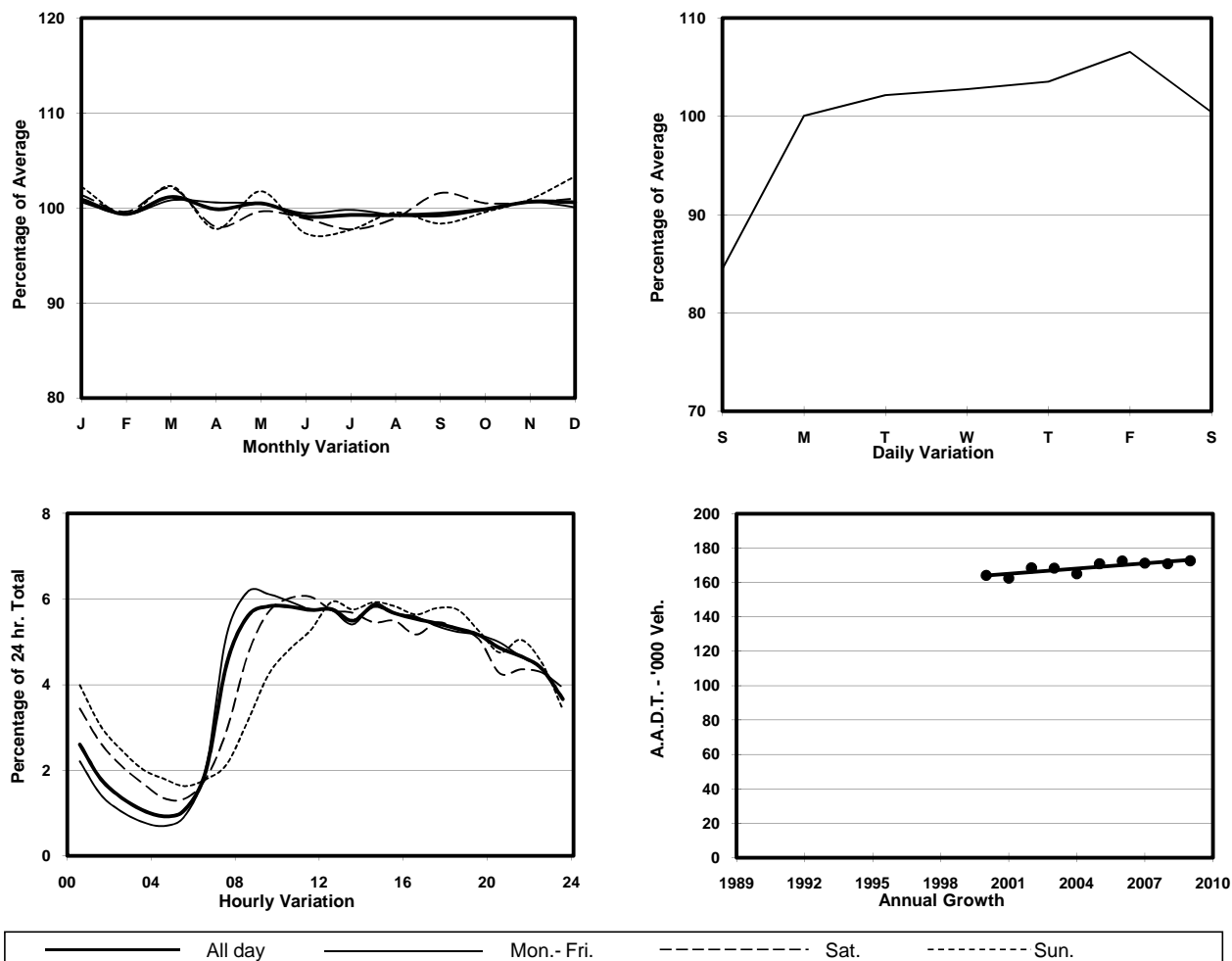
ROAD TYPE URBAN TRUNK ROAD

LINK GLOUCESTER RD (from ARSENAL ST to CROSS HARBOUR TUNNEL S. INT)

6.5m 15.8m 2.8m 19m 5.3m

E bound 5 lanes W bound 5 lanes

## 1. TRAFFIC FLOW VARIATION AND GROWTH



## 2. TRAFFIC CHARACTERISTICS (BY DIRECTION)

Parameter	All - Day	Mon. - Fri.	Sat.	Sun.
<b>EAST BOUND</b>				
A.A.D.T.	81070	84740	79080	69350
R 12 / 24 - %	65.9	67.5	63.2	59.4
R 16 / 24 - %	85.6	87.5	81	79.6
AM Peak Hour	0900-1000	0900-1000	0900-1000	0900-1000
One-way flow at AM peak hour	4700	5180	4480	2800
T - % (AM)	-	-	-	-
PM Peak Hour	1600-1700	1600-1700	1700-1800	1700-1800
One-way flow at PM peak hour	4470	4730	4340	4160
T - % (PM)	-	-	-	-
Prop.of commercial vehicles - 16 hr.	-	-	-	-
<b>WEST BOUND</b>				
A.A.D.T.	91490	94420	95700	77870
R 12 / 24 - %	67	68.6	64.2	61
R 16 / 24 - %	85.5	87	82.3	80.1
AM Peak Hour	0900-1000	0800-0900	0900-1000	0900-1000
One-way flow at AM peak hour	5360	6060	5500	3460
T - % (AM)	-	-	-	-
PM Peak Hour	1800-1900	1600-1700	1800-1900	1800-1900
One-way flow at PM peak hour	5120	5280	5210	4580
T - % (PM)	-	-	-	-
Prop.of commercial vehicles - 16 hr.	-	-	-	-

## 3. OTHER INFORMATION AND COMMENT