

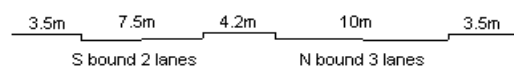
YEAR 2009

CORE STATION 3005

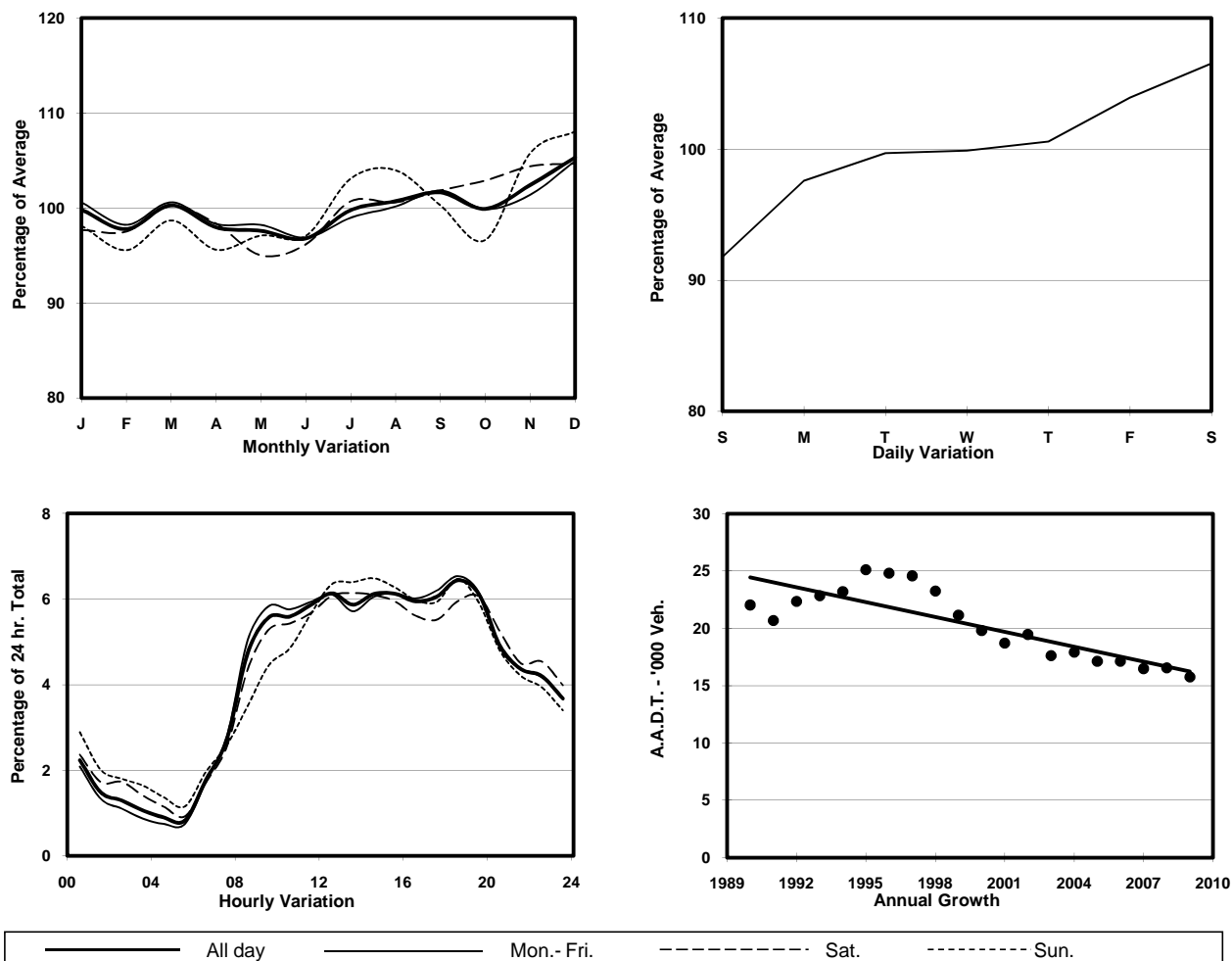
ROAD NETWORK MAJOR

ROAD TYPE PRIMARY DISTRIBUTOR

LINK CHATHAM RD S (from SALISBURY RD to MODY RD)



1. TRAFFIC FLOW VARIATION AND GROWTH



2. TRAFFIC CHARACTERISTICS (BY DIRECTION)

Parameter	All - Day	Mon. - Fri.	Sat.	Sun.
SOUTH BOUND				
A.A.D.T.	8380	8440	9070	7700
R 12 / 24 - %	68.7	69.3	66.2	67.8
R 16 / 24 - %	88.6	89.3	87.2	86.4
AM Peak Hour	0900-1000	0900-1000	0900-1000	0900-1000
One-way flow at AM peak hour	480	510	500	340
T - % (AM)	-	-	-	-
PM Peak Hour	1800-1900	1800-1900	1800-1900	1800-1900
One-way flow at PM peak hour	570	590	580	530
T - % (PM)	-	-	-	-
Prop.of commercial vehicles - 16 hr.	-	-	-	-
NORTH BOUND				
A.A.D.T.	7370	7450	7790	6790
R 12 / 24 - %	65.5	66.8	62.9	61.6
R 16 / 24 - %	84.7	85.9	82.5	80.7
AM Peak Hour	0900-1000	0900-1000	0900-1000	0900-1000
One-way flow at AM peak hour	400	420	390	310
T - % (AM)	-	-	-	-
PM Peak Hour	1800-1900	1800-1900	1800-1900	1800-1900
One-way flow at PM peak hour	440	450	420	410
T - % (PM)	-	-	-	-
Prop.of commercial vehicles - 16 hr.	-	-	-	-

3. OTHER INFORMATION AND COMMENT

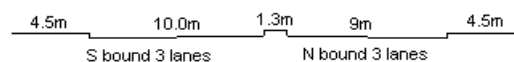
YEAR 2009

CORE STATION 3006

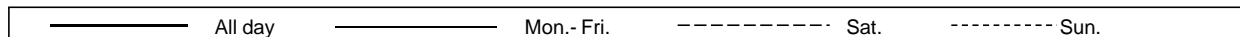
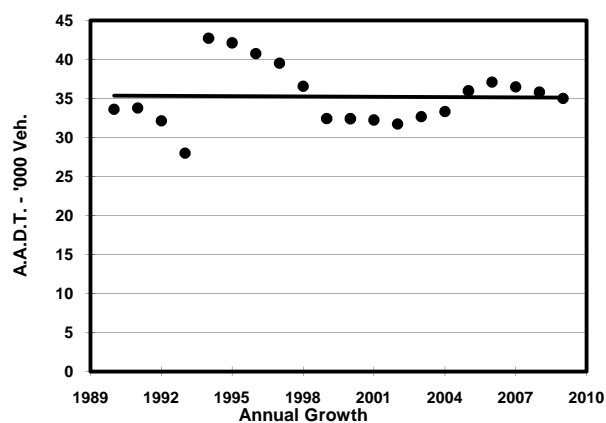
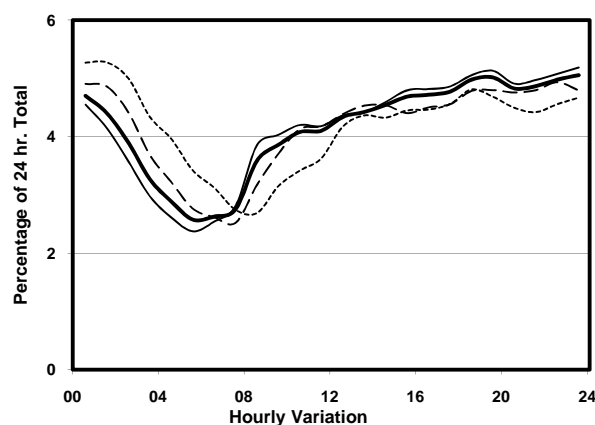
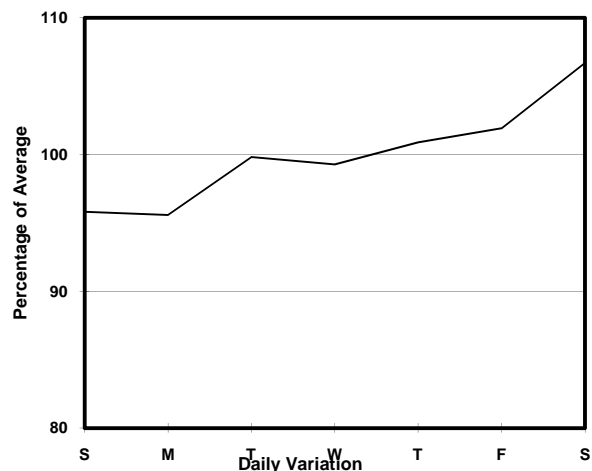
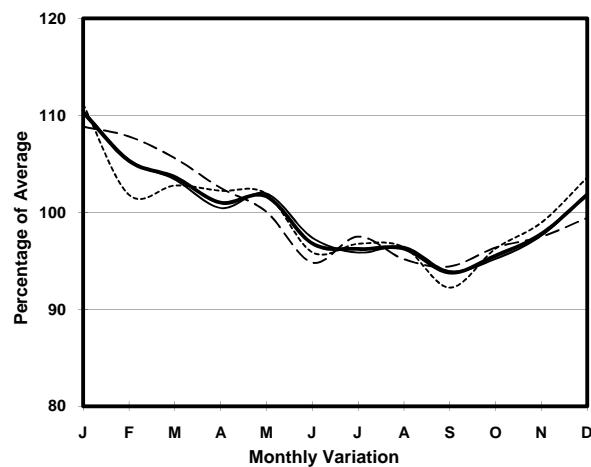
ROAD NETWORK MAJOR

ROAD TYPE PRIMARY DISTRIBUTOR

LINK NATHAN RD (from SHANTUNG ST to DUNDAS ST)



1. TRAFFIC FLOW VARIATION AND GROWTH



2. TRAFFIC CHARACTERISTICS (BY DIRECTION)

Parameter	All - Day	Mon. - Fri.	Sat.	Sun.
SOUTH BOUND				
A.A.D.T.	18810	18820	20100	17790
R 12 / 24 - %	55.2	56.2	53.4	51.3
R 16 / 24 - %	75.1	76.5	73.1	69.9
AM Peak Hour	0900-1000	0800-0900	0900-1000	0900-1000
One-way flow at AM peak hour	830	890	840	620
T - % (AM)	-	31.8	-	-
PM Peak Hour	1800-1900	1800-1900	1800-1900	1800-1900
One-way flow at PM peak hour	970	970	1030	960
T - % (PM)	-	23.5	-	-
Prop.of commercial vehicles - 16 hr.	-	27.1	-	-
NORTH BOUND				
A.A.D.T.	16170	16020	17310	16060
R 12 / 24 - %	45.9	46.9	44.8	41.8
R 16 / 24 - %	65.3	66.9	63.7	59.4
AM Peak Hour	0900-1000	0900-1000	0900-1000	0700-0800
One-way flow at AM peak hour	520	530	540	460
T - % (AM)	-	50	-	-
PM Peak Hour	1800-1900	1800-1900	1800-1900	1800-1900
One-way flow at PM peak hour	770	790	770	670
T - % (PM)	-	40.6	-	-
Prop.of commercial vehicles - 16 hr.	-	38.2	-	-

3. OTHER INFORMATION AND COMMENT